

INSTALLATION INSTRUCTIONS

"WIPE EDGE" CLASSIC COMMERCIAL FINNED TUBE RADIATION V4-ARPM/PM2 PEDESTAL MOUNTED

Pedestal mounted enclosure is not recommended for use with steam systems.

1. Per the mechanical drawings, layout the pedestal brackets based on the enclosure lengths of the run. For enclosures 2'-0" to 5'-0" lengths, two (2) brackets will be required. These brackets should start and end 6" to 12" in from each end of the enclosure. For enclosures 5'-6" to 8'-0" lengths, three (3) brackets will be required. The third bracket will be centered between the two outer brackets.
2. The rear vertical bracket leg should be a minimum of 2" from the wall. Determine if brackets need to be shimmed to allow for a level and straight enclosure installation. Secure brackets to floor with specified fasteners (by others).
3. Locate finned tube element where identified on mechanical drawings. Place element slide cradle supports onto element where brackets are located. The legs of the element cradles are tapered slightly outward so that a friction or compression fit will occur and hold them in place when pressing the cradles into place between the element fins. Place element and element slide cradles onto the ball bearings in the bracket and make sweat connections. For steel element, apply specified pipe dope, or sealing tape for threaded connections with the required threaded fittings. Once the elements are connected into the heating system, a standard pressure leak test should

be conducted as specified by the Mechanical Engineer.

For copper tube elements, flush the loop or series with system water after soldering to neutralize the remaining flux material and prevent corrosive action and resulting pinhole leaks.

4. The enclosure can now be installed. Place enclosure over brackets at approximate location at beginning of run. All accessories are underlapping. Fit each accessory piece under the enclosure as noted on schedule.
5. When all enclosures and accessories are in position, drill 7/64" holes into accessories through solid section of grille. Fasten with #6 sheet metal screws.

MAINTENANCE

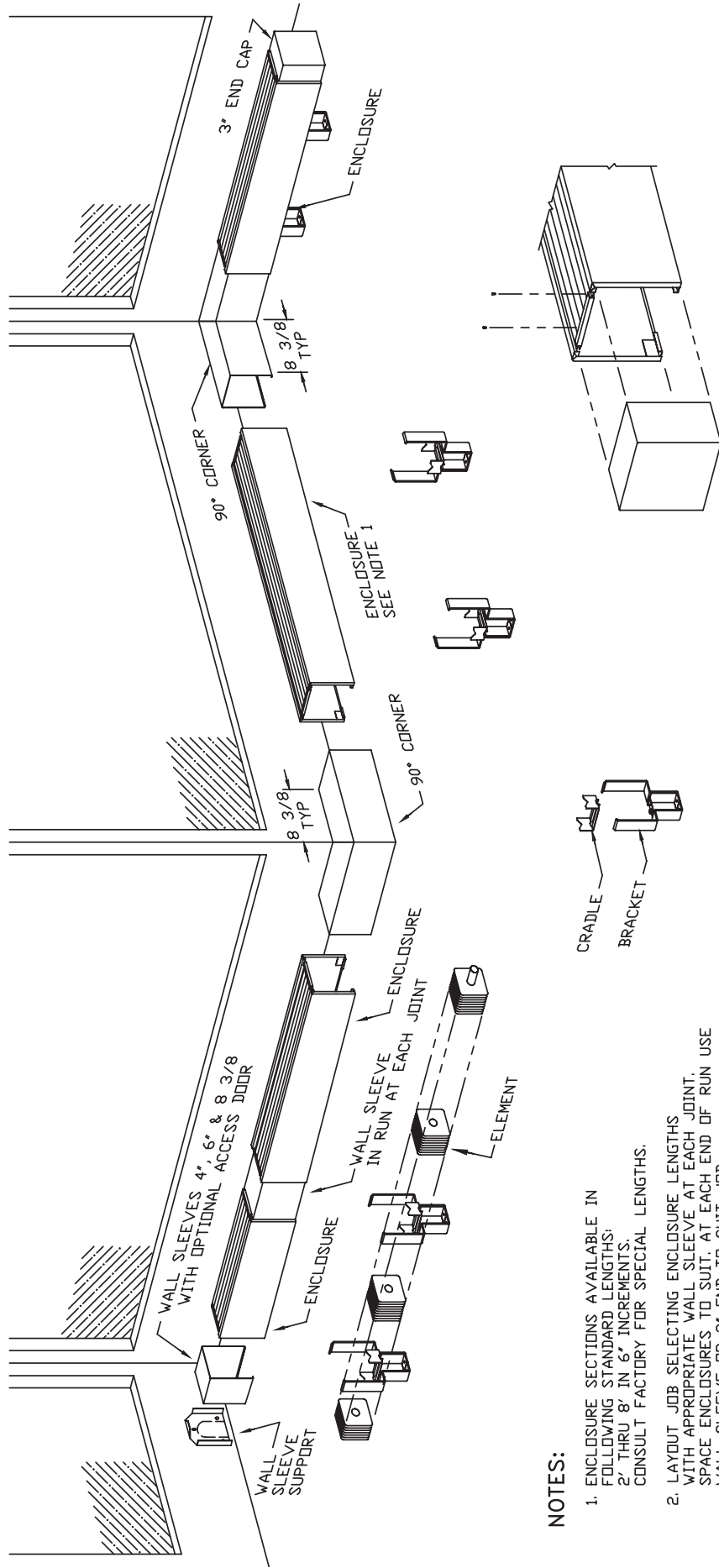
Before each heating season, remove accessories and enclosure panel to inspect finned tube elements for accumulation of dust or other debris that may accumulate and block airflow between fins. Remove dust and debris from coil fins with a vacuum cleaner or compressed air. Inspect for leaks or areas of corrosion. It should not be required, but if necessary, place a drop of lubricant (machine oil) onto each ball bearing (where applicable) located in the water brackets or bracket mounted hangers. Replace cover and accessories.



260 NORTH ELM ST., WESTFIELD, MA 01085
 TEL: (413) 568-9571 FAX: (413) 564-5661
 www.vulcanrad.com



GENERAL LAYOUT



DRILL $\varnothing 7/64$ HOLES INTO THE ACCESSORY WHEN IN POSITION THROUGH SOLID SECTION OF GRILLE, FASTEN WITH #6 SHEET METAL SCREWS.

NOTES:

1. ENCLOSURE SECTIONS AVAILABLE IN FOLLOWING STANDARD LENGTHS: 2', THRU 8' IN 6' INCREMENTS. CONSULT FACTORY FOR SPECIAL LENGTHS.
2. LAYOUT JOB SELECTING ENCLOSURE LENGTHS WITH APPROPRIATE WALL SLEEVE AT EACH JOINT. SPACE ENCLOSURES TO SUIT. AT EACH END OF RUN USE WALL SLEEVE OR 3' END TO SUIT JOB.
3. LAYOUT PEDESTAL BRACKET ASSEMBLY SO IT IS 6" TO 12" FROM THE END OF THE ENCLOSURE TO AVOID INTERFERENCE WITH ENCLOSURE GUSSETS. LOCATE 1 PEDESTAL BRACKET ASSEMBLY AT CENTER OF ENCLOSURES LONGER THAN 5'.
4. SCHEDULE ENCLOSURES TO OVERLAP ACCESSORIES 1'-3" EXCEPT ENDS 1'-2". WITH ACCESS DOOR OVERLAP MAX. 1". FOR MOST INSTALLATIONS, THE USE OF A TWO FOOT ENCLOSURE SECTION FOR A REMOVABLE ACCESS SECTION IS ACCEPTABLE.

CAT-38928E