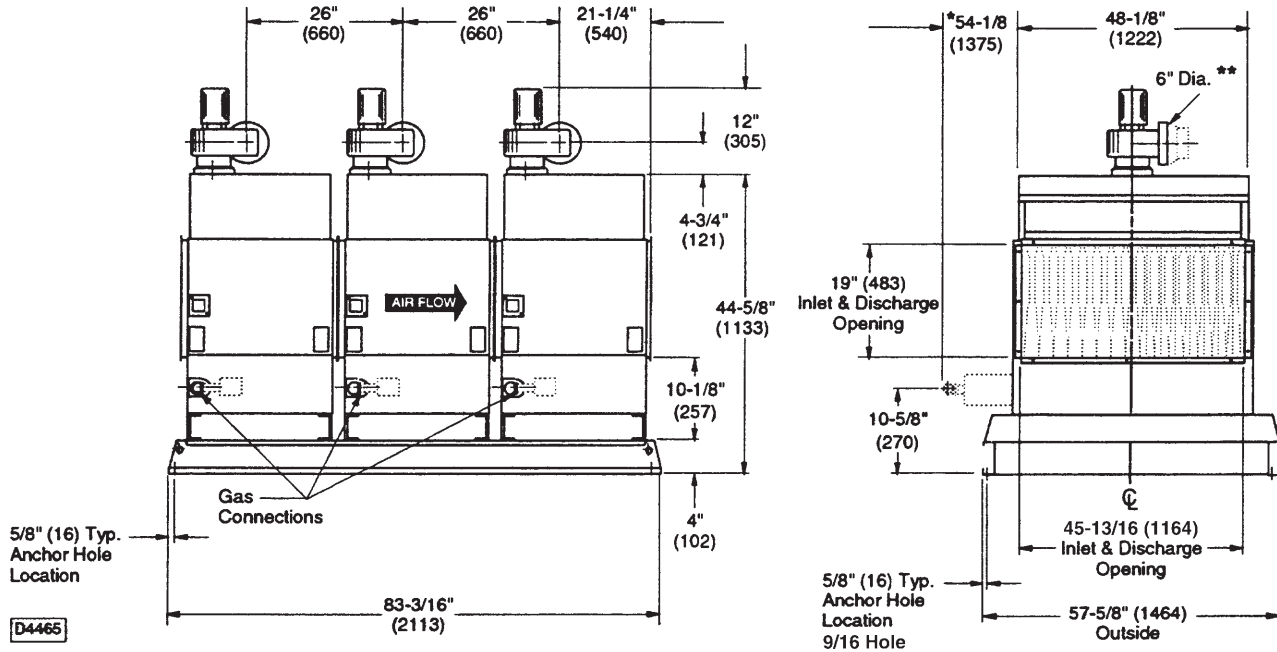


ENGINEERED PRODUCTS

Model - ME(12) (A, B)† A

Unit Type (UT) - ME, Natural Vented Indoor Make-Up Air Unit
 Capacity (CA) - (12) (1,200 mBTU)
 Furnace Type (FT) - A, B Standard Temperature Rise (30-80)F°
 Indoor Arrangement (IA) - A, Duct Furnace



NOTE:

- * Recommended clearance to service the burner drawer.
- ** 6" Dia. = Flue Opening - The 5" to 6" increaser adaptor is supplied by the manufacturer for this model.
- Gas Inlet sizes: Natural Gas = 3/4" Dia.
- LP Gas = 1/2" or 3/4" Dia.



260 NORTH ELM ST. WESTFIELD, MA 01085
 (413) 564-5540 • FAX: (413) 562-5311

www.sterlinghvac.com  A MESTEK COMPANY

Project: _____

Unit Tag: _____



ME(12) (A, B)† A Weights, Material & Performance Data

Unit Weights

Approximate weights for Arrangement "A"†		
Unit Type	Net Wt.†	Ship Wt.†
Capacity	(Lb.)	(Lb.)
ME12	1198	1333

Conversion 1 lb. = 0.453 kg.

†The approximate net and shipping weights shown are for a basic unit (these weights do not include any options).

†(FM) Furnace Construction Material

- 1 - Aluminized Steel
- 2 - 409 Stainless Steel (First Furnace Only)
- 3 - 409 Stainless Steel (All Furnace Sections)
- 4 - 321 Stainless Steel (First Furnace Only)
- 5 - 321 Stainless Steel (All Furnace Sections)
- 6 - 409 Stainless Steel Package (First Furnace Only)
- 7 - 409 Stainless Steel Package (All Furnace Sections)
- 8 - 321 Stainless Steel Package (First Furnace Only)
- 9 - 321 Stainless Steel Package (All Furnace Sections)
- 0 - None
- Z - Other

Performance Data

Unit Type ME Capacity 12 Furnace Type A,B Indoor Arrangement "A"	INPUT RATING BTU/Hr (kW)	OUTPUT RATING BTU/Hr (kW)	EFF. %	Temp. Rise F. Deg. (C Deg.)		CFM		Pressure Drop In. of Water		Nat. Gas Inlet (in.)	L.P. Gas Inlet (in.)
				MIN.	MAX.	(cu. m/s) MIN.	(cu. m/s) MAX.	(kPa) MIN.	(kPa) MAX.		
12 A/B	1,200,000 (351.4)	960,000 (281.1)	80	60 (33)	180 (100)	4,938 (2.331)	14,815 (6.993)	0.45 (0.11)	3.36 (0.84)	3/4	1/2 OR 3/4

MODEL NUMBER

	1	2	3	4	5	6	7	8	9	10	11	12	13	14	15	16	+
(EXX)	M	E	*	*	*	†	A										

DIGITS 3 & 4 = (CA) CAPACITY, DIGIT, 5 = (FT) FURNACE TYPE, DIGIT 6 =†(FM) FURNACE MATERIAL.
REFER TO CATALOG FOR MODEL NUMBER DESCRIPTION.