

INSTALLATION INSTRUCTIONS

"WIPE EDGE" CLASSIC COMMERCIAL FINNED TUBE RADIATION VA/VB-AR-7

Not recommended to be used with steam applications due to element pitch requirements.

- Determine quantities of enclosure and accessories required per wall or run. If installation is wall-to-wall, run backplate to within ½" of adjoining wall(s). If run ends with end cap, extend backplate beyond end of required enclosure 1-1/2" for 4" end and 6" for 8-3/8" end.
- Mount backplate (full or partial) to wall at prescribed height (Refer to Submittal Drawing) making sure that it is level. If valve compartments are being used, make sure that an equivalent amount of backplate is installed.
- When installation calls for partial backplate, install two (2) water brackets, using a standoff/gauge piece to locate the vertical position, per enclosure length up to 6'-0" of length. Use three (3) water brackets, using a standoff/gauge piece to locate the vertical position, per cover 6'-6" up to 8'-0" of length. Valve compartments should have a minimum of one (1) bracket. Insert the notched end of the bracket standoff gauge piece into the top of the wall mounted water bracket and butt the 90° flange at the top of the standoff/gauge piece against the 90° bottom flange of the partial backplate. The standoff/gauge piece can be removed after the water bracket has been secured to the wall and re-used to position the remaining water brackets in the run. Accessories do not require brackets.
- When installation calls for full backplate, insert the notched end of the bracket standoff gauge piece into the top of the wall mounted water bracket. Then slide it into the 'V' bend of the full backplate. Secure brackets to wall using fasteners (as specified) by others.
- Lay out heating element as required. Place slide cradle onto the bottom of element at each bracket location. The element cradle has two legs that angle out slightly. Position the legs between the fins so there is tension against the legs. This holds the cradle in position. Check submittal drawing for correct position of element fin. **For copper tube elements, flush the loop or series with system water after soldering to neutralize the remaining flux material and prevent corrosive action and resulting pinhole leaks.**
- All accessories are underlapping. Valve Compartments are installed the same as enclosure. Per the room schedule, locate where accessories are to be installed. Install underlapping accessories with the top rear vertical flange mounting between the wall and the rear of the backplate. All underlapping accessories can extend into the enclosure up to 3-1/2" maximum. The accessory top back bend is slipped between the wall and the backplate. The accessory bottom bend returns to wall and is secured with fasteners by others.
- The enclosure can now be installed. Per the room schedule, locate where enclosures are to be installed. Start enclosure at left end of run working clockwise. The enclosure grille support gussets mount directly into the 'V' bend of backplate. Secure bottom of enclosure into brackets. Tighten the posi-loc clamps to secure the enclosure.

MAINTENANCE

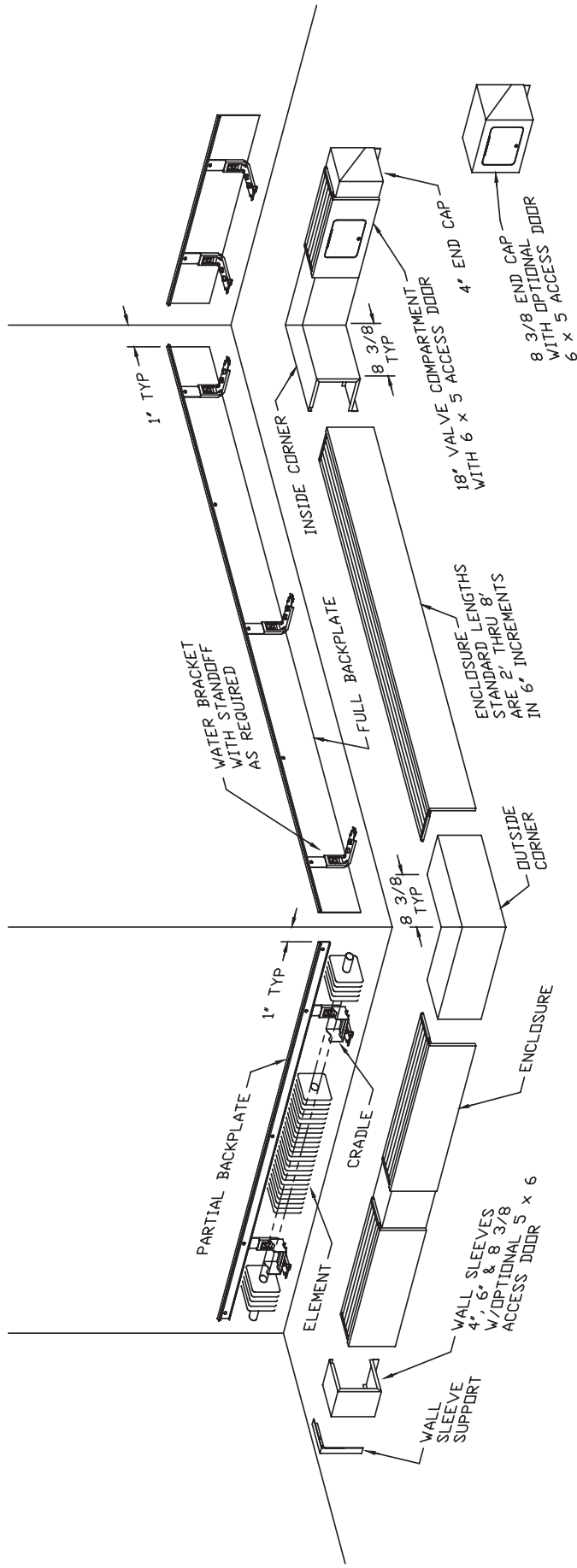
Before each heating season, remove accessories and enclosure panel to inspect finned tube elements for accumulation of dust or other debris that may accumulate and block airflow between fins. Remove dust and debris from coil fins with a vacuum cleaner or compressed air. Inspect for leaks or areas of corrosion. It should not be required, but if necessary, place a drop of lubricant (machine oil) onto each ball bearing (where applicable) located in the water brackets or bracket mounted hangers. Replace cover and accessories.



260 North Elm St., Westfield, MA 01085 Tel: (413) 564-5535 Fax: (413) 562-8437
www.sterlingheat.com

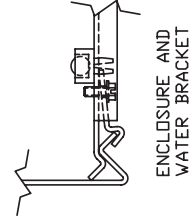
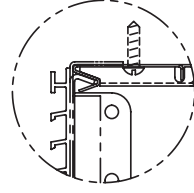
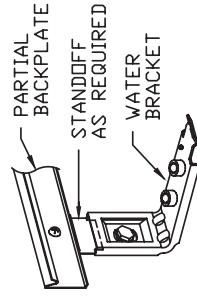


GENERAL LAYOUT



NOTES:

- ENCLOSURE SECTIONS AVAILABLE IN FOLLOWING STANDARD LENGTHS: 2' THRU 8' IN 6" INCREMENTS. CONSULT FACTORY FOR SPECIAL LENGTHS.
- SCHEDULE ENCLOSURE TO OVERLAP ACCESSORIES 1" TO 3". BACKPLATE MUST COVER AT LEAST THIS PORTION OF WALL FOR HANGING ACCESSORIES. HOWEVER, IT MAY EXTEND BEYOND THE ENCLOSURE.
- WHEN AN END IS USED FOR SHORT-OF-WALL INSTALLATIONS THE BACKPLATE CAN NOT EXTEND MORE THAN 1/2".
- WALL SLEEVES MAY BE AT ENDS OR PLACED IN RUN FOR DIMENSIONAL MAKE-UP.
- FOR DAMPER INSTALLATION SEE DAMPER INSTALLATION SHEET.



CAT-72546A