

# INSTALLATION INSTRUCTIONS

## "WIPE EDGE" CLASSIC COMMERCIAL FINNED TUBE RADIATION VK-AR

1. Determine quantities of enclosure and accessories required per wall or run. If installation is wall-to-wall, run backplate to within ½" of adjoining wall(s). If run ends with end cap, extend backplate beyond end of required enclosure 1-1/2" for 3" end and 6" for 8-3/8" end.
  2. Mount backplate (full or partial) to wall at prescribed height (Refer to Submittal Drawing) making sure that it is straight and level. If valve compartments are being used, make sure that an equivalent amount of backplate is installed.
- 3A. Hot Water Systems:** Water brackets are used to support the enclosure and a single tier of element. Water brackets do not provide pitch for the element. If a second tier (row) of element is to be installed, a wall mounted hanger will need to be installed so that the center line of the second element tube is 5" for S style enclosure (6" for RD and T style enclosure) above the bottom element center line. Install two (2) water brackets per enclosure length up to 6'-0" of length. Three (3) water brackets per cover 6'-6" up to 8'-0" of length. Valve compartments should have a minimum of one (1) bracket (Accessories do not require brackets). Insert top of the bracket into 'V' bend of backplate (Full or Partial) and insert onto horizontal flange of the Partial backplate. Secure brackets to wall using fasteners (as specified) by others. Supply/Return Pipe hangers (if required) can be mounted to the wall adjacent to the water bracket (every other one). Consult submittal sheet for conditions that will not allow a Supply/Return Pipe Hanger.
- 3B. Steam Systems (Two Pipe):**

Bracket mounted hangers used to support the element(s) are not available for this product. A wall mounted hanger will be required to support and pitch the element. These will have to be installed so that the supply end of the element will be the highest point and pitch down at a rate of ½ inch per 20 foot run. Check length of longest run to insure that the element will not interfere with the internal support gussets of the enclosure.

4. Lay out heating element as required. Place slide cradle onto the bottom of element at each bracket location. The element cradle has two legs that angle out slightly. Position the legs between the fins so there is tension against the legs. This holds the cradle in position. Check submittal drawing for correct position of element fin. **For copper tube elements, flush the loop or series with system water after soldering to neutralize the remaining flux material and prevent corrosive action and resulting pinhole leaks.**
5. All accessories are underlapping. Valve Compartments are installed the same as enclosure. Per the room schedule, locate where accessories are to be installed. Install underlapping accessories with the top rear vertical flange mounting between the wall and the rear of the backplate. All underlapping accessories can extend into the enclosure up to 3-1/2" maximum. The accessory top back bend is slipped between the wall and the backplate. The accessory bottom bend returns to wall and is secured with fasteners by others.
6. The enclosure can now be installed unless damper assembly is required (see damper installation sheet packed with damper operator assembly). Per the room schedule, locate where enclosures are to be installed. Start enclosure at left end of run, working clockwise. The enclosure grille support gussets mount directly into the 'V' bend of backplate. Secure bottom of enclosure into brackets. Tighten the posi-loc clamps to secure the enclosure.

### MAINTENANCE

Before each heating season, remove accessories and enclosure panel to inspect finned tube elements for accumulation of dust or other debris that may accumulate and block airflow between fins. Remove dust and debris from coil fins with a vacuum cleaner or compressed air. Inspect for leaks or areas of corrosion. It should not be required, but if necessary, place a drop of lubricant (machine oil) onto each ball bearing (where applicable) located in the water brackets or bracket mounted hangers. Replace cover and accessories.



**STERLING**  
COMMERCIAL HYDRONIC PRODUCTS

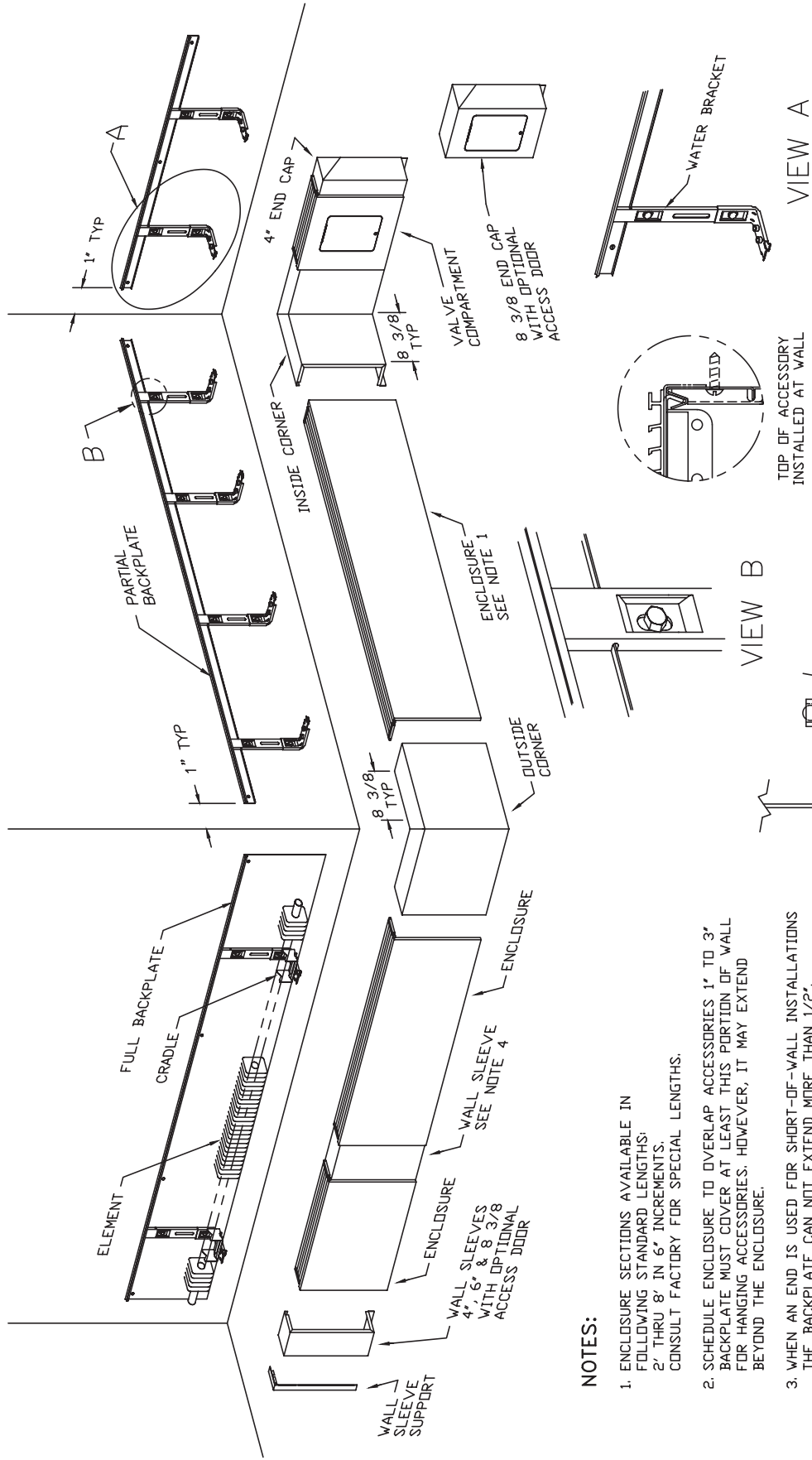
260 North Elm St., Westfield, MA 01085 Tel: (413) 564-5535 Fax: (413) 562-8437  
www.sterlingheat.com



A MESTEK COMPANY



# GENERAL LAYOUT



## NOTES:

1. ENCLOSURE SECTIONS AVAILABLE IN FOLLOWING STANDARD LENGTHS:  
2' THRU 8' IN 6" INCREMENTS.  
CONSULT FACTORY FOR SPECIAL LENGTHS.
2. SCHEDULE ENCLOSURE TO OVERLAP ACCESSORIES 1' TO 3' BACKPLATE MUST COVER AT LEAST THIS PORTION OF WALL FOR HANGING ACCESSORIES. HOWEVER, IT MAY EXTEND BEYOND THE ENCLOSURE.
3. WHEN AN END IS USED FOR SHORT-OF-WALL INSTALLATIONS THE BACKPLATE CAN NOT EXTEND MORE THAN 1/2".
4. WALL SLEEVES MAY BE AT ENDS OR PLACED IN RUN FOR DIMENSIONAL MAKE-UP.
5. FOR DAMPER INSTALLATION SEE DAMPER INSTALLATION SHEET.

CAT-72551A