

Hydronic Buffer Tank

STANDARD FEATURES

- Four each female connection ports, 1 ½ NPT on BT13-H, BT26-H & BT40-H, 2" NPT on BT80-H, and 2 1/2" NPT on BT119-H.
- SUS304 Stainless Steel Inner Liner (all models)
- Expanded polyurethane resin foam layer for R12 insulation value
- White powder coated galvanized steel outer jacket.
- ¾ female NPT drain with SST plug.
- ¾ female NPT vent/PRV port
- ½ female NPT Aquastat port
- ¼" ID temperature sensor well.
- 3kW electric immersion heaters with over-temp protection and junction box. 240VAC single phase/60Hz. (1 for BT-13H, 2 ea for all others)

MODEL: BT13-H
 Part No: AC-BT13-H
 Storage Capacity, 13 US Gallons/ 50 l
 Heating Capacity, 3kW (10,250 BTU/hr)

MODEL: BT26-H
 Part No: AC-BT26-H
 Storage Capacity, 26 US Gallons/ 100 l
 Heating Capacity, 6kW (20,500 BTU/hr)

MODEL: BT40-H
 Part No: AC-BT40-H
 Storage Capacity, 40 US Gallons/ 150 l
 Heating Capacity, 6kW (20,500 BTU/hr)

MODEL: BT80-H
 Part No: AC-BT80-H
 Storage Capacity, 80 US Gallons/ 300 l
 Heating Capacity, 6kW (20,500 BTU/hr)

MODEL: BT119-H
 Part No: AC-BT119-H
 Storage Capacity, 119 US Gallons/ 450 l
 Heating Capacity, 6kW (20,500 BTU/hr)



260 North Elm St., Westfield, MA 01085
 (800) 465-8558

7555 Tranmere Drive, Mississauga, ONT. L5S 1L4 Canada
 (905) 670-5888

www.spacepak.com

PROJECT: _____ **DATE:** _____

LOCATION: _____

CUSTOMER: _____

ENGINEER: _____

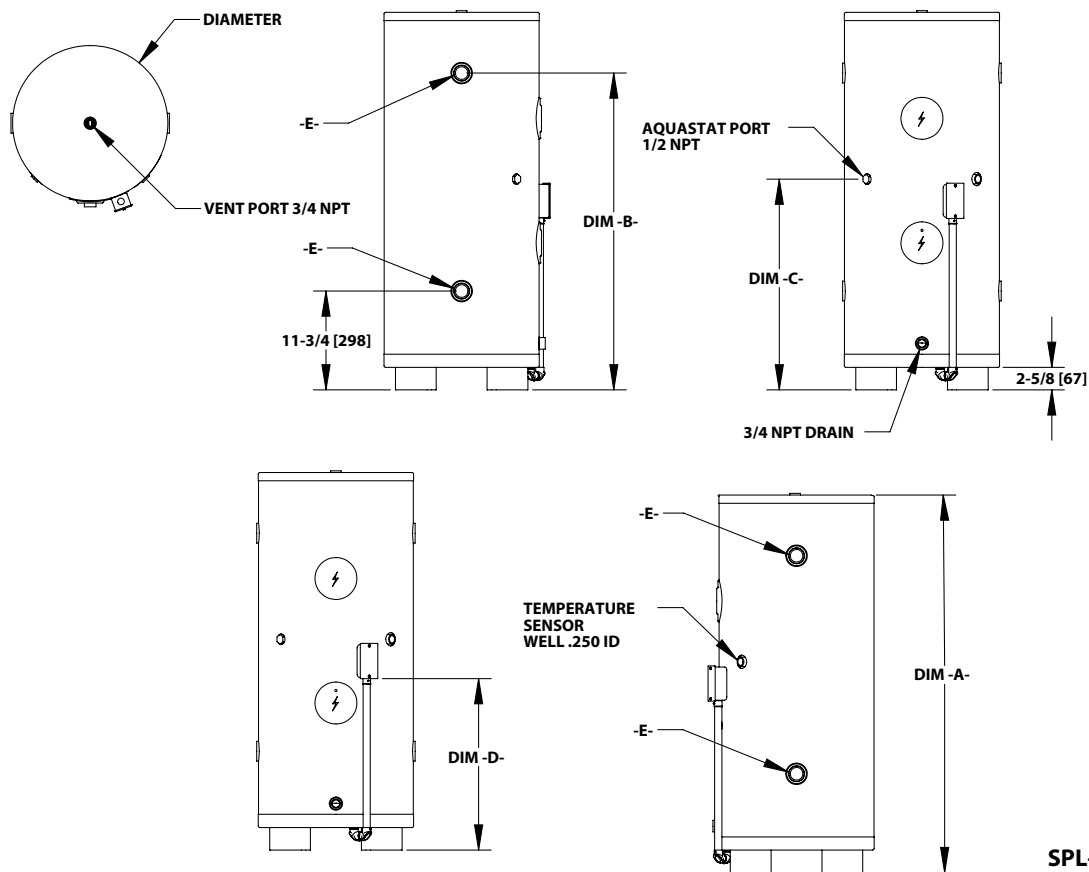
SUBMITTED BY: _____

FOR: Reference Approval Construction

UNIT DESIGNATION: _____

SCHEDULE NUMBER: _____

SUBMITTAL DATA: BUFFER TANK



SPL-WG1042_B

Specifications

Model		BT13-H	BT26-H	BT40-H	BT80-H	BT119-H	
Dimensions	Diameter	in	18-1/2	18-1/2	18-1/2	23-5/8	27 3/4
		mm	470	470	470	600	700
	A	in	29-1/6	45	60	64-1/8	67 7/8
		mm	741	1143	1524	1629	1723
	B	in	21-1/2	37-3/4	52-3/4	55-1/2	59 3/8
		mm	546	959	1340	1410	1508
	C	in	19-5/8	25-1/8	34-1/8	34-5/8	37 1/8
		mm	498	638	867	879	943
D	in	16-1/2	20-1/2	26-5/8	32-1/2	32 1/2	
	mm	419	521	676	826	827	
Port Diameter NPT	E	in	1-1/2	1-1/2	1-1/2	2	2-1/2
Capacity	Gal	13	26	40	80	119	
	l	50	100	150	300	450	
Max Water Flow	GPM	36	36	36	48	60	
	l/min	136	136	136	182	225	
Ship Weight	lbs	40	84	104	130	148	
	kg	18	38	47	59	64	
Empty Weight	lbs	38	77	97	125	143	
	kg	17	35	44	57	66	
Full Weight	lbs	148	304	446	805	993	
	kg	67	138	202	365	450	
Min Circuit Ampacity	Amp	15	30	30	30	30	
Max Working Pressure	PSI	100					
	kPa	690					
Electric Heat Capacity	BTU/hr	10,250	20,500				
	kW	3	6	6	6	6	

*Not suitable for potable water