



# Panel Radiators and Towel Warmers

Residential and Light Commercial Applications



Live or Work  
**in Total Comfort**

# Panel Radiators

Slant/Fin panel radiators are not only practical but they are a beautiful addition to any decor.

Engineered to perform in all types of applications including modern low temperature systems. Our panel radiators offer versatility in both residential and commercial settings.

## A casual yet sophisticated look for any room.

All radiators are finished with an attractive decorative grille, rounded edges and can be installed anywhere with (6) different connection points for ultimate flexibility.

Unlike conventional baseboard, which works exclusively off "convection", Slant/Fin's panel radiators combine both radiant and convection for ultimate comfort. By using radiant heating, panel radiators are able to heat objects rather than space creating a greater sense of individual comfort at lower temperature settings. Operating at lower temperatures results in increased efficiencies of your entire hydronic system, saving money without sacrificing comfort.

## Features & Benefits

- 1,472 – 18,355 BTU/h
- Reversible Radiator\*
- Top Grille & Side Panels
- Air Vent / 1 Blind Stop
- 10-Year Warranty
- Pretreated Steel with Powder Coated White Finish
- High Scratch and Impact Resistance
- Optimal Corrosion Resistance



Available in four types:  
11, 21, 22 and 33.  
Heights ranging 12" – 24",  
and lengths 16" – 70".

With over 70 configurations we have the right product for virtually any hydronic heating application whether in the home, office or any other setting.

- Valve Inserts for Thermostatic Head
- Max Working Pressure 145 PSI
- Max Operating Temperature 200°F
- Each Unit Individually Pressure Tested
- Multiple Connections for Ease of Installation
  - (2) Bottom Connections 3/4"
  - (4) Side Connections 1/2"

\* Bottom Connection - Install Right or Left Side (Type 11 - Right Side Only)

# Towel Warmers

What's better than a cozy bathroom and a warm towel after a relaxing shower...nothing.



Slant/Fin towel warmers are a welcome entity to any bathroom. Elegant and stylish our towel warmers epitomize comfort and convenience. Not only do they provide a nice warm towel but they provide comfortable space heat and help reduce moisture in the air.

Towel warmers are available in both straight and curved designs and are the perfect alternative to traditional baseboard heating.

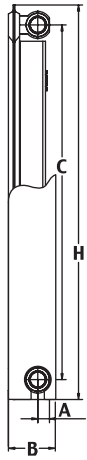
## Features & Benefits

- Electrically Laser Welded
- Cathodic Dip Primer w/ Durable Powder Coat Finish
- Standard Operating Pressure: 145 PSI
- Maximum Operating Temperature 200°F
- Connections: 1/2" (inner thread)
- 10-Year Warranty

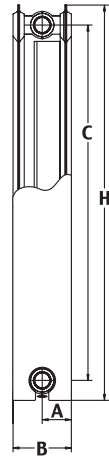
# Dimensional Data\*

## Panel Radiators

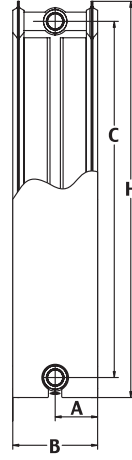
Type 11



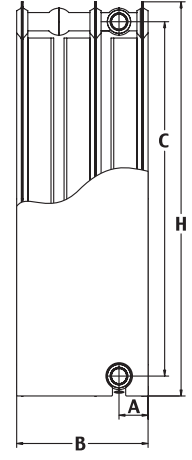
Type 21



Type 22



Type 33



Type 11	
A	5/8"
B	2-3/4"
C	17-7/8" 21-7/8"
H	19-11/16" 23-5/8"

Type 21		
A	1-3/8"	
B	2-7/8"	
C	13-7/8" 17-7/8" 21-7/8"	
H	15-3/4" 19-11/16" 23-5/8"	

Type 22			
A	2-7/8"		
B	4-1/8"		
C	9-7/8" 13-7/8" 17-7/8" 21-7/8"		
H	11-13/16" 15-3/4" 19-11/16" 23-5/8"		

Type 33	
A	1-3/8"
B	6-1/2"
C	17-7/8" 21-7/8"
H	19-11/16" 23-5/8"

## Towel Warmers

GK/GKR



GK					
H	28"	38"	52"	38"	52"
L	20"	20"	20"	24"	24"

GKR				
H	38"	52"	38"	52"
L	20"	20"	24"	24"

\*Dimensions are approximate, see submittal data for actual.

# Specifications

## Panel Radiators

Type	Part Number	Depth	Dimensions (HxL)*		Output (BTU) @120°F	Output (BTU) @140°F	Output (BTU) @160°F	Output (BTU) @180°F	Weight (lbs)	Water Content (gal)	Equivalent Baseboard @180°F (ft)
			In.	mm							
11	5136U1150040100	2-3/4	20 x 16	500 x 400	506	810	1,139	1,472	13	0.29	3
	5136U1150060100		20 x 24	500 x 600	758	1,215	1,708	2,207	18	0.44	4
	5136U1150070100		20 x 28	500 x 700	887	1,419	1,991	2,575	22	0.5	5
	5136U1150090100		20 x 36	500 x 900	1,140	1,824	2,560	3,311	26	0.66	6
	5136U1150100100		20 x 40	500 x 1000	1,268	2,024	2,847	3,678	29	0.73	7
	5136U1160060100		24 x 24	600 x 600	922	1,490	2,093	2,731	22	0.52	5
	5136U1160070100		24 x 28	600 x 700	1,081	1,737	2,444	3,189	24	0.6	6
	5136U1160090100		24 x 36	600 x 900	1,389	2,237	3,145	4,104	31	0.76	8
21	5136U2640040000	2-7/8	16 x 16	400 x 400	583	927	1,280	1,654	15	0.47	3
	5136U2640060000		16 x 24	400 x 600	875	1,391	1,921	2,484	22	0.71	5
	5136U2640070000		16 x 28	400 x 700	1,019	1,622	2,239	2,895	26	0.84	5
	5136U2640090000		16 x 36	400 x 900	1,311	2,083	2,879	3,726	33	1.08	7
	5136U2640100000		16 x 40	400 x 1000	1,454	2,313	3,197	4,138	37	1.18	8
	5136U2640120000		16 x 48	400 x 1200	1,749	2,778	3,841	4,968	44	1.42	9
	5136U2640140000		16 x 56	400 x 1400	2,038	3,239	4,477	5,775	51	1.66	10
	5136U2640180000		16 x 70	400 x 1800	2,621	4,166	5,755	7,448	64	2.16	13
	5136U2650040000		20 x 16	500 x 400	699	1,114	1,558	2,002	20	0.58	4
	5136U2650060000		20 x 24	500 x 600	1,047	1,674	2,340	3,009	29	0.87	6
	5136U2650070000		20 x 28	500 x 700	1,223	1,951	2,730	3,507	33	1.03	7
	5136U2650090000		20 x 36	500 x 900	1,570	2,507	3,508	4,511	41	1.32	8
	5136U2650100000		20 x 40	500 x 1000	1,762	2,814	3,935	5,013	46	1.45	9
	5136U2650140000		20 x 56	500 x 1400	2,468	3,935	5,508	6,980	53	1.58	13
	5136U2650180000		20 x 70	500 x 1800	3,173	5,064	7,085	9,022	82	2.61	16
	5136U2660040000		24 x 16	600 x 400	817	1,303	1,826	2,322	24	0.68	5
	5136U2660060000		24 x 24	600 x 600	1,226	1,955	2,734	3,533	33	1.03	7
	5136U2660070000		24 x 28	600 x 700	1,431	2,280	3,192	4,120	40	1.21	8
	5136U2660090000		24 x 36	600 x 900	1,840	2,935	4,106	5,302	49	1.55	10
	5136U2660100000		24 x 40	600 x 1000	2,043	3,257	4,559	5,887	55	1.71	11
	5136U2660120000		24 x 48	600 x 1200	2,449	3,908	5,471	7,064	66	2.06	13
	5136U2660140000		24 x 56	600 x 1400	2,861	4,564	6,386	8,206	77	2.38	15
	5136U2230060000		12 x 24	300 x 600	825	1,309	1,824	2,358	20	0.55	5
	5136U2230070000		12 x 28	300 x 700	962	1,526	2,130	2,750	24	0.66	5
5136U2230090000	12 x 36	300 x 900	1,237	1,966	2,739	3,542	29	0.84	7		
5136U2230100000	12 x 40	300 x 1000	1,375	2,182	3,042	3,934	33	0.95	7		
5136U2230120000	12 x 48	300 x 1200	1,649	2,619	3,651	4,719	37	1.13	9		
5136U2230130000	12 x 52	300 x 1300	1,787	2,839	3,958	5,115	42	1.24	9		
5136U2230140000	12 x 56	300 x 1400	1,924	3,056	4,260	5,491	48	1.37	10		
5136U2230180000	12 x 70	300 x 1800	2,474	3,932	5,478	7,084	57	1.69	13		
5136U2240040000	16 x 16	400 x 400	712	1,132	1,583	2,013	18	0.47	4		
5136U2240060000	16 x 24	400 x 600	1,065	1,696	2,374	3,016	26	0.71	6		
5136U2240070000	16 x 28	400 x 700	1,242	1,978	2,767	3,518	31	0.84	7		
5136U2240090000	16 x 36	400 x 900	1,595	2,546	3,559	4,524	40	1.08	8		
5136U2240100000	16 x 40	400 x 1000	1,777	2,828	3,957	5,026	42	1.18	9		
5136U2240120000	16 x 48	400 x 1200	2,130	3,396	4,744	6,029	51	1.42	11		
5136U2240140000	16 x 56	400 x 1400	2,484	3,960	5,539	7,006	60	1.67	13		
5136U2240180000	16 x 70	400 x 1800	3,195	5,096	7,122	9,049	75	2.16	16		
5136U2250040000	20 x 16	500 x 400	911	1,458	2,038	2,620	22	0.58	5		
5136U2250060000	20 x 24	500 x 600	1,365	2,182	3,053	3,925	33	0.87	7		
5136U2250070000	20 x 28	500 x 700	1,593	2,545	3,560	4,580	37	1.03	8		
5136U2250090000	20 x 36	500 x 900	2,048	3,274	4,579	5,889	49	1.32	11		
5136U2250100000	20 x 40	500 x 1000	2,279	3,636	5,090	6,545	53	1.45	12		
5136U2260040000	24 x 16	600 x 400	1,088	1,744	2,448	3,184	26	0.68	6		
5136U2260060000	24 x 24	600 x 600	1,633	2,615	3,673	4,781	40	1.03	9		
5136U2260070000	24 x 28	600 x 700	1,904	3,050	4,285	5,575	46	1.21	10		
5136U2260090000	24 x 36	600 x 900	2,449	3,991	5,605	7,172	57	1.55	13		
5136U2260100000	24 x 40	600 x 1000	2,766	4,434	6,228	7,965	64	1.71	14		
5136U2260120000	24 x 48	600 x 1200	3,319	5,323	7,474	9,562	75	2.06	17		
5136U2260140000	24 x 56	600 x 1400	3,868	6,208	8,719	11,083	86	2.41	20		
5136U2260180000	24 x 70	600 x 1800	4,976	7,979	11,206	14,335	112	3.09	25		
5136U3350060000	20 x 24	500 x 600	1,743	2,767	3,929	5,132	49	1.32	9		
5136U3350070000	20 x 28	500 x 700	2,035	3,226	4,587	5,988	57	1.53	11		
5136U3350090000	20 x 36	500 x 900	2,615	4,146	5,893	7,694	73	1.98	14		
5136U3350100000	20 x 40	500 x 1000	2,903	4,608	6,548	8,551	79	2.19	15		
5136U3360060000	24 x 24	600 x 600	2,147	3,424	4,785	6,117	60	1.55	11		
5136U3360090000	24 x 36	600 x 900	3,221	5,138	7,184	9,177	86	2.32	16		
5136U3360100000	24 x 40	600 x 1000	3,577	5,705	7,979	10,199	95	2.58	18		
5136U3360120000	24 x 48	600 x 1200	4,293	6,847	9,577	12,237	115	3.09	22		
5136U3360140000	24 x 56	600 x 1400	5,011	7,990	11,172	14,213	135	3.60	25		
5136U3360180000	24 x 70	600 x 1800	6,441	10,271	14,363	18,355	170	4.64	32		

## Towel Warmers

Part Number	Dimensions* (LxH)		Water Content (gal)	Weight (lbs)	BTU @180
	in	mm			
511110050007270	20 x 28	500 x 727	0.75	11	1,368
511110050009520	20 x 38	500 x 952	1.02	16	1,713
511110050013120	20 x 52	500 x 1312	1.39	22	2,511
511110060009520	24 x 38	600 x 952	1.15	18	1,982
511110060013120	24 x 52	600 x 1312	1.55	25	2,915

GK Straight

Part Number	Dimensions* (LxH)		Water Content (gal)	Weight (lbs)	BTU @180
	in	mm			
511112050009520	20 x 38	500 x 952	1.02	16	1,713
511112050013120	20 x 52	500 x 1312	1.39	22	2,511
511112060009520	24 x 38	600 x 952	1.15	18	1,982
511112060013120	24 x 52	600 x 1312	1.55	25	2,915

GKR Curved

\*Dimensions are approximate, see submittal data for actual.



260 North Elm Street  
Westfield, MA 01085  
Phone: 631-691-1800

7555 Tranmere Drive  
Mississauga, Ontario, L5S 1L4  
Phone: 905-670-5888



www.slantfinbaseboard.com

