

Since 1949  
**Slant/Fin**<sup>®</sup>  
BASEBOARD

# 350 Series

High Output, Slope Top Baseboard



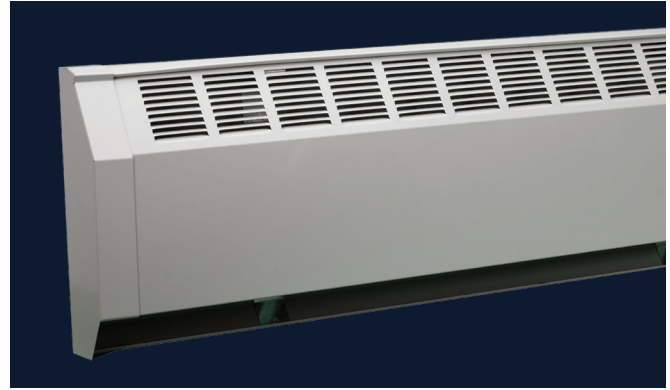
Ideal for  
**LIGHT COMMERCIAL & INDUSTRIAL**  
Hot Water or Steam Heating



## 350 Series

### High Output, Slope Top Baseboard

350 Series baseboard combines the compactness and economy of baseboard with the high output and heavy-duty construction needed for “in-between” applications. 350 Series makes baseboard practical for industrial and commercial use, as well as apartments, multi-story construction and custom residential heating. It is also the perfect supplement for Slant/Fin 3/4" baseboard, in “problem areas” of high heat loss or limited wall space. Optional 1" and 1-1/4" copper/aluminum elements permit higher flow rates, longer series-loop runs, and lower pump loads where required. With the 1-1/4" all-steel element, 350 Series is perfect for use in one or two pipe steam systems. Matching accessories let you speed through virtually any job condition without custom cutting and fitting.



### Features

- Rust Resistant
- Two heights for one (350-10) or two (350-14) heating element tiers
- Nu-White powder coated finish standard, custom colors available
- Five heating element selection
- Fully assembled and factory packaged (Elements shipped separately)
- Strong front panel resists kicks & dents

### Cast-Iron Ruggedness

350 Series is engineered throughout for maximum strength. Super-strong enclosures. Extra-strength steel brackets. Heavy-duty copper and steel tubing with full mill rated bursting strength. Rock-solid interlocking fin elements are so strong you can stand on them.

### Contractor Designed

Fast, economical installation. 350 Series goes straight from carton to wall—without sorting parts, wasting time. Factory pre-cut lengths of 2 to 8 feet combine with telescoping accessories to make wall-to-wall installations without cutting.

### Interchangeable Heating Elements

A choice of five heating elements provides a range of output and capacity to closely match 350 baseboard to job requirements.

# 350 Series

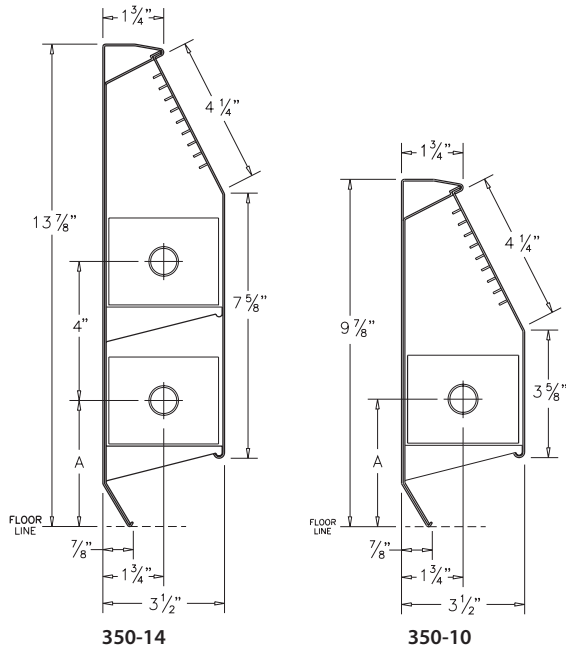
## Ratings

Model Number	Element Type	Rows of Heating Element	Tube Size & Material	Aluminum Fin Size	Fins Per Foot	Water Flow	Pressure Drop <sup>(1)</sup>	Steam 1 PSI Btu./Hr. Per Foot	HOT WATER RATINGS*											
									BTU/HR/FT. (Flow Rate 3 Ft./Sec.)											
									110°F 43°C	120°F 49°C	130°F 54°C	140°F 60°C	150°F 66°C	160°F 71°C	170°F 77°C	180°F 82°C	190°F 88°C	200°F 93°C	210°F 99°C	220°F 104°C
351-10	H-1	1	3/4" Copper	3 1/4" x 3 1/4" x .024"	48	1 GPM 4 GPM	47 525	N/A	230 250	310 330	390 410	480 500	570 600	670 700	770 810	870 920	980 1040	1080 1140	1200 1260	1320 1400
353-10	H-3	1	3/4" Copper	2 3/4" x 2 1/2" x .010"	60	1 GPM 4 GPM	47 525	N/A	210 230	290 300	360 380	440 460	520 550	610 650	710 750	800 850	900 960	1000 1060	1100 1170	1220 1290
354-10	H-4	1	1" Copper	2 3/4" x 2 1/2" x .011"	55	1 GPM 4 GPM	13 145	N/A	210 230	290 310	360 380	440 460	520 550	610 650	710 750	800 850	900 960	1000 1060	1100 1170	1220 1290
355-10	H-5X	1	1 1/4" Copper	3 1/4" x 3 1/4" x .020"	48	1 GPM 4 GPM	6 63	1160	220 230	300 310	370 390	450 480	540 570	640 670	730 780	830 880	940 990	1040 1100	1140 1210	1260 1340
356-10	H-6X	1	1 1/4" IPS Steel	3 1/4" x 3 1/4" x .025"	48	1 GPM 4 GPM	3 41	980	190 200	250 270	320 340	390 410	460 490	550 580	630 670	710 750	810 850	890 940	980 1040	1080 1150
351-14	H-1	1	3/4" Copper	3 1/4" x 3 1/4" x .024"	48	1 GPM 4 GPM	47 525	N/A	245 259	328 347	412 435	501 530	597 631	704 744	892 984	989 1091	1085 1198	1182 1305	1279 1412	1376 1519
353-14	H-3	1	3/4" Copper	2 3/4" x 2 1/2" x .010"	60	1 GPM 4 GPM	47 525	N/A	230 244	309 327	388 410	472 499	562 594	661 699	782 825	892 925	1025 1126	1226 1308	1428 1428	
354-14	H-4	1	1" Copper	2 3/4" x 2 1/2" x .011"	55	1 GPM 4 GPM	13 145	N/A	230 244	309 327	388 410	472 499	562 594	661 699	782 825	892 925	1025 1126	1226 1308	1428 1428	
355-14	H-5X	1	1 1/4" Copper	3 1/4" x 3 1/4" x .020"	48	1 GPM 4 GPM	6 63	1280	236 250	317 335	397 420	484 512	576 609	678 717	785 848	892 948	1045 1051	1139 1154	1233 1257	1326 1464
356-14	H-6X	1	1 1/4" IPS Steel	3 1/4" x 3 1/4" x .025"	48	1 GPM 4 GPM	3 41	1105 1870	204 215	273 289	343 362	417 441	497 525	585 618	742 819	822 907	903 997	984 1085	1064 1175	1145 1265
351-14	H-1	2	3/4" Copper	3 1/4" x 3 1/4" x .024"	48	1 GPM 4 GPM	47 525	N/A	360 380	480 510	610 640	740 780	880 970	1040 1150	1290 1420	1440 1590	1590 1750	1740 1920	1890 2080	2030 2250
353-14	H-3	2	3/4" Copper	2 3/4" x 2 1/2" x .010"	60	1 GPM 4 GPM	47 525	N/A	340 360	460 490	570 600	700 740	830 910	980 1080	1210 1340	1350 1490	1490 1650	1630 1800	1770 1960	1910 2110
354-14	H-4	2	1" Copper	2 3/4" x 2 1/2" x .011"	55	1 GPM 4 GPM	13 145	N/A	340 360	460 490	570 600	700 740	830 910	980 1080	1210 1340	1350 1490	1490 1650	1630 1800	1770 1960	1910 2110
355-14	H-5X	2	1 1/4" Copper	3 1/4" x 3 1/4" x .020"	48	1 GPM 4 GPM	6 63	1890	350 370	470 500	590 620	710 750	850 940	1000 1100	1240 1370	1390 1530	1530 1690	1670 1850	1820 2010	1960 2160
356-14	H-6X	2	1 1/4" IPS Steel	3 1/4" x 3 1/4" x .025"	48	1 GPM 4 GPM	3 41	1630	300 320	400 420	500 530	610 640	730 810	860 950	1070 1190	1200 1320	1320 1460	1450 1600	1570 1730	1690 1870

\* Based on 65°F entering air temperature. (1) Millinches per foot.

Note: Ratings are based on active finned length (3" less than overall length), and include 15% heating effect factor. Use 4 GPM ratings only when flow is known to be equal to or greater than 4 GPM; otherwise 1 GPM ratings must be used.

## Dimensions



## Ordering Data

**PACKAGING:** Complete 350 Series baseboard enclosures are factory assembled and individually packaged. Cover and heating elements are packaged and sold separately. Cover includes brackets and expansion cradles.

**CONSTRUCTION:** Back panel and front cover fully assembled at factory, ready to fasten to the wall.

**DEPTH:** 3-1/2"

**HEIGHT:** 9-7/8" (one tier) and 13-7/8" (one or two tier)

**LENGTHS:** 2', 3', 4', 5', 6', 7', 8'

**MATERIAL:** 19-gauge cold rolled steel front cover. 24-gauge back cover. 17-gauge brackets.

**ELEMENT SUPPORT:** Self-adjusting, polypropylene brackets, allowing quiet expansion.

**FINISH:** Nu-White powder coated finish, custom colors available.

### 350 SERIES MODELS:

Model 351 with H-1, 3/4" copper/aluminum fins

Model 353 with H-3, 3/4" copper/aluminum fins

Model 354 with H-4, 1" copper/aluminum fins

Model 355 with H-5x, 1-1/4" copper/aluminum fins

Model 356 with H-6X, 1-1/4" steel/aluminized steel fins

Model	Element "A"	Depth
351	H-1	3-15/16"
353	H-3	3-5/8"
354	H-4	3-5/8"
355	H-5x	3-15/16"
356	H-6x	3-15/16"

# 350 Series

## Accessories

### HINGED

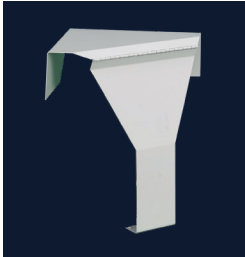
End Cap 4"



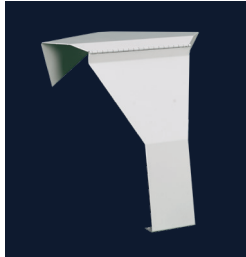
Slotted End Cap 4"



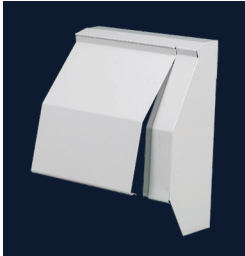
Inside Corner 90°



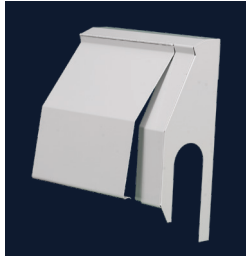
Inside Corner 135°



Valve Cover 8"



Slotted Valve Cover 8"



### NON-HINGED

End Cap 2"



Wall Trim 4" & 7"



Filler Sleeve 7" & 14"



Outside Corner 90° & 135°



Splice Plate 2"



### ADDITIONAL ACCESSORIES

Support Bracket

Plastic Expansion Cradle

