

THIS PRINT AND ALL INFORMATION CONTAINED HEREIN ARE THE PROPERTY OF BURNER HEATERS, INC. NO PART OF THIS PRINT OR INFORMATION CONTAINED HEREIN IS TO BE REPRODUCED OR TRANSMITTED IN ANY FORM OR BY ANY MEANS, ELECTRONIC OR MECHANICAL, INCLUDING PHOTOCOPYING, RECORDING, OR BY ANY INFORMATION STORAGE AND RETRIEVAL SYSTEMS.

BURNER HEATERS
 LCD, 600-2300MBH
 CONNECTION DIAGRAM
 CSD-1

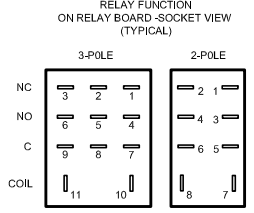
SCALE: NONE
 DATE: 5/11/06
 DRAWING NUMBER: 42-2254
 SHEET: 1 OF 2
 2-STAGE

- NOTES:**
- REMOVE FROM THE TERMINAL STRIPS:
 JUMPER A AND JUMPER B WHEN USING THE REMOTE OPERATOR OPTION.
 JUMPER C WHEN USING THE ENABLE RELAY OPTION.
 JUMPER D WHEN USING THE LOW AND HIGH GAS PRESSURE SWITCHES OPTION.
 JUMPER E WHEN USING THE POWER VENT OPTION.
 JUMPER F WHEN USING THE LOW WATER CUTOFF OPTION.
 - ADD TO THE RELAY BOARD:
 LOCKOUT CONTROL MODULE AT CONNECTOR J10.
 TIMER MODULE AT CONNECTOR J14.
 2-POLE RELAYS AT SOCKETS K2 (600-750MBH), K2R (1050-2300MBH), K9 AND TD6.
 2-POLE RELAY AT SOCKET K6 WHEN USING THE ENABLE/DISABLE OPTION.
 - ADD A JUMPER CONNECTOR AT J4 WHEN NOT USING THE AIR DAMPER OPTION. IF THE AIR DAMPER OPTION IS USED ADD WIRE HARNESS 40-0305 AT J4.
 - COIL & TAPE UNUSED WIRE HARNESS WIRES.

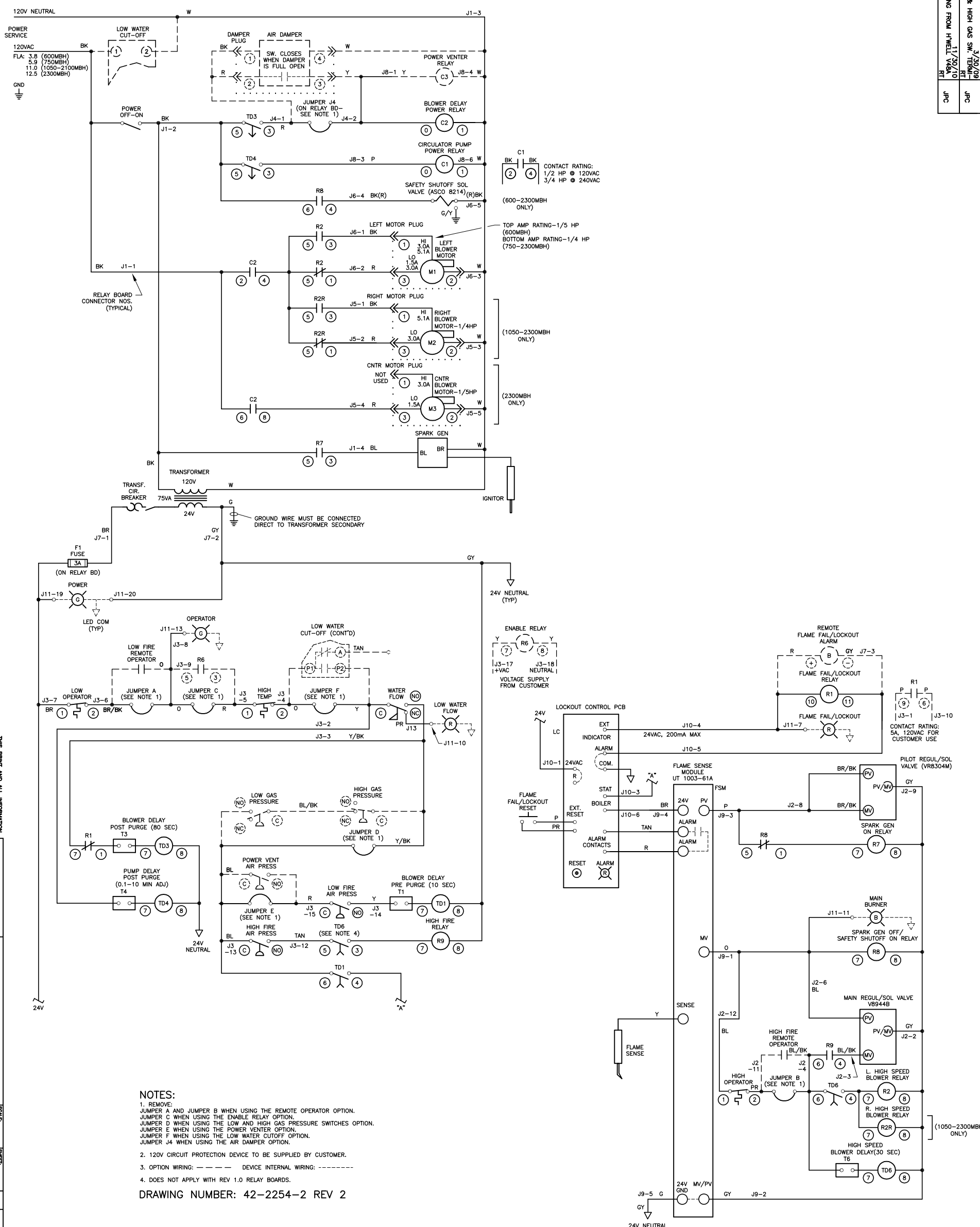
WIRE LEGEND:

- FACTORY WIRING -18 GA., STRANDED, TYPE TEW, 600V, 105 DEG C OR EQUIVALENT
- FACTORY WIRING -14 GA., STRANDED, TYPE TEW, 600V, GREEN, 105 DEG C OR EQUIVALENT
- OPTIONAL FACTORY WIRING, 18 GA., STRANDED, TYPE TEW, 600V, 105 DEG C OR EQUIVALENT
- WIRING BY OTHERS
- WIRE HARNESS ASSY

DRAWING NUMBER: 42-2254-1 REV 2



RELEASED UNDER CN 185	ECN 239	3/20/09	JPC
REV 1	OPER SW, TERMINAL 2 WAS 4, LOW & HIGH GAS SW, TERMINAL 1		JPC
REV 2	REPLACE G. NO. NC WERE 3, 2, 1		JPC
REV 3	REPLACE G. NO. NC WERE 3, 2, 1		JPC
REV 4	REPLACE G. NO. NC WERE 3, 2, 1		JPC
REV 5	REPLACE G. NO. NC WERE 3, 2, 1		JPC
REV 6	REPLACE G. NO. NC WERE 3, 2, 1		JPC
REV 7	REPLACE G. NO. NC WERE 3, 2, 1		JPC
REV 8	REPLACE G. NO. NC WERE 3, 2, 1		JPC
REV 9	REPLACE G. NO. NC WERE 3, 2, 1		JPC
REV 10	REPLACE G. NO. NC WERE 3, 2, 1		JPC
REV 11	REPLACE G. NO. NC WERE 3, 2, 1		JPC
REV 12	REPLACE G. NO. NC WERE 3, 2, 1		JPC
REV 13	REPLACE G. NO. NC WERE 3, 2, 1		JPC
REV 14	REPLACE G. NO. NC WERE 3, 2, 1		JPC
REV 15	REPLACE G. NO. NC WERE 3, 2, 1		JPC
REV 16	REPLACE G. NO. NC WERE 3, 2, 1		JPC
REV 17	REPLACE G. NO. NC WERE 3, 2, 1		JPC
REV 18	REPLACE G. NO. NC WERE 3, 2, 1		JPC
REV 19	REPLACE G. NO. NC WERE 3, 2, 1		JPC
REV 20	REPLACE G. NO. NC WERE 3, 2, 1		JPC
REV 21	REPLACE G. NO. NC WERE 3, 2, 1		JPC
REV 22	REPLACE G. NO. NC WERE 3, 2, 1		JPC
REV 23	REPLACE G. NO. NC WERE 3, 2, 1		JPC
REV 24	REPLACE G. NO. NC WERE 3, 2, 1		JPC
REV 25	REPLACE G. NO. NC WERE 3, 2, 1		JPC
REV 26	REPLACE G. NO. NC WERE 3, 2, 1		JPC
REV 27	REPLACE G. NO. NC WERE 3, 2, 1		JPC
REV 28	REPLACE G. NO. NC WERE 3, 2, 1		JPC
REV 29	REPLACE G. NO. NC WERE 3, 2, 1		JPC
REV 30	REPLACE G. NO. NC WERE 3, 2, 1		JPC
REV 31	REPLACE G. NO. NC WERE 3, 2, 1		JPC
REV 32	REPLACE G. NO. NC WERE 3, 2, 1		JPC
REV 33	REPLACE G. NO. NC WERE 3, 2, 1		JPC
REV 34	REPLACE G. NO. NC WERE 3, 2, 1		JPC
REV 35	REPLACE G. NO. NC WERE 3, 2, 1		JPC
REV 36	REPLACE G. NO. NC WERE 3, 2, 1		JPC
REV 37	REPLACE G. NO. NC WERE 3, 2, 1		JPC
REV 38	REPLACE G. NO. NC WERE 3, 2, 1		JPC
REV 39	REPLACE G. NO. NC WERE 3, 2, 1		JPC
REV 40	REPLACE G. NO. NC WERE 3, 2, 1		JPC
REV 41	REPLACE G. NO. NC WERE 3, 2, 1		JPC
REV 42	REPLACE G. NO. NC WERE 3, 2, 1		JPC
REV 43	REPLACE G. NO. NC WERE 3, 2, 1		JPC
REV 44	REPLACE G. NO. NC WERE 3, 2, 1		JPC
REV 45	REPLACE G. NO. NC WERE 3, 2, 1		JPC
REV 46	REPLACE G. NO. NC WERE 3, 2, 1		JPC
REV 47	REPLACE G. NO. NC WERE 3, 2, 1		JPC
REV 48	REPLACE G. NO. NC WERE 3, 2, 1		JPC
REV 49	REPLACE G. NO. NC WERE 3, 2, 1		JPC
REV 50	REPLACE G. NO. NC WERE 3, 2, 1		JPC



NOTES:

- REMOVE:
 JUMPER A AND JUMPER B WHEN USING THE REMOTE OPERATOR OPTION.
 JUMPER C WHEN USING THE ENABLE RELAY OPTION.
 JUMPER D WHEN USING THE LOW AND HIGH GAS PRESSURE SWITCHES OPTION.
 JUMPER E WHEN USING THE POWER VENTER OPTION.
 JUMPER F WHEN USING THE LOW WATER CUTOFF OPTION.
 JUMPER J4 WHEN USING THE AIR DAMPER OPTION.
- 120V CIRCUIT PROTECTION DEVICE TO BE SUPPLIED BY CUSTOMER.
- OPTION WIRING: - - - - - DEVICE INTERNAL WIRING: - - - - -
- DOES NOT APPLY WITH REV 1.0 RELAY BOARDS.

DRAWING NUMBER: 42-2254-2 REV 2

THIS PRINT AND ALL INFORMATION APPEARING THEREON IS THE PROPERTY OF RHEEM MANUFACTURING COMPANY. NO PART OF THIS PRINT OR INFORMATION THEREON MAY BE REPRODUCED OR TRANSMITTED IN ANY FORM OR BY ANY MEANS WITHOUT THE WRITTEN PERMISSION OF RHEEM MANUFACTURING COMPANY. © 2007 RHEEM MANUFACTURING COMPANY.



LCD, 600-2300MBH
 LADDER DIAGRAM
 CSD-1

SCALE	NONE	SHEET	2 OF 2
DR. BY	ONE	DATE	5/11/06
CHK. BY	ONE	TIME	

DATE	42-2254
REV	2

2-STAGE