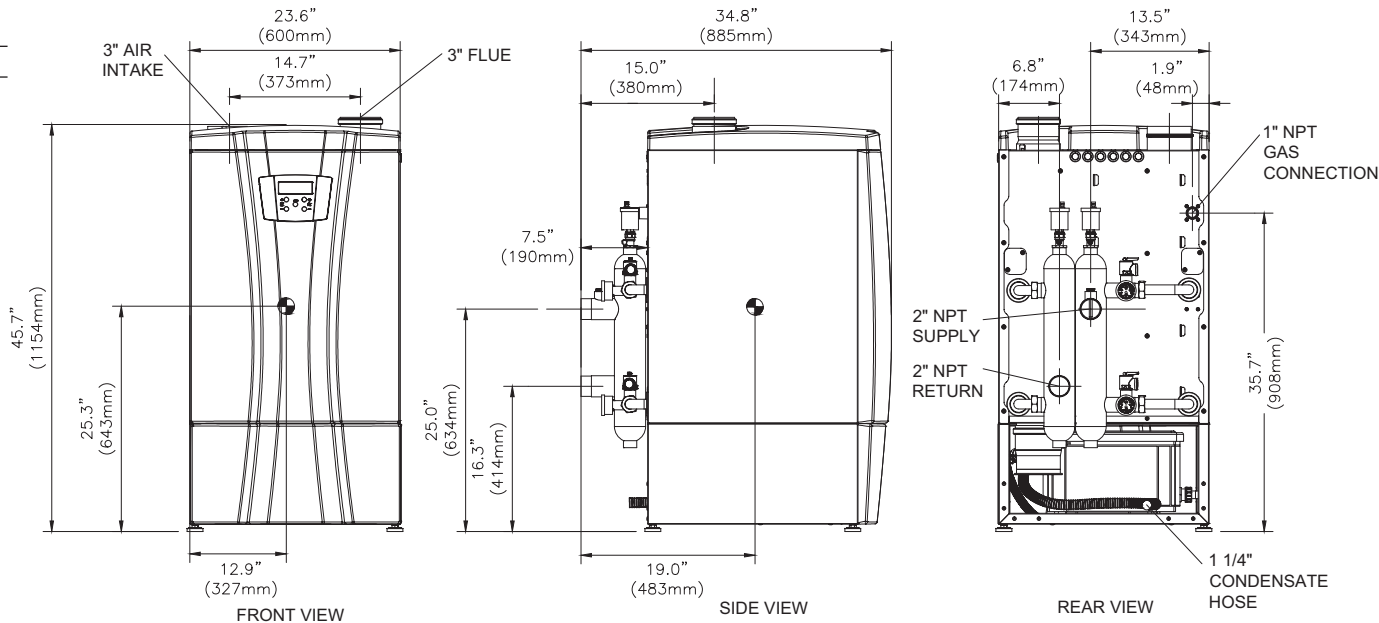


CODE OPTIONS

CSD-1*	Manual Reset LWCO
*Argus control is factory programmed for one ignition trial.	

RSUB-191.A



INFINITE ENERGY 2-199 model water heater not available for sale in the U.S. market due to DOE regulations.  
INFINITE ENERGY 2-199 model water heater not available for sale in Canada.

- Notes:**
- 1. Dimensions are approximate and should not be used to "rough-in" equipment.
  - 2. Dimensions are subject to change without notice.
  - 3. ⬤ Symbol indicates center of gravity.

BOILER CERTIFIED RATINGS & CAPACITIES

Fuel Type	Natural/Propane Gas	Boiler FLA	.92*
Input BTU/hr.	200,000 / 59 kW	Min. Gas Pressure Required	3" W.C.**
Output BTU/hr.	183,600 / 54 kW	Max. Gas Pressure Allowed	13" W.C.
Electrical Requirements	120VAC/ 1 ph/ 60 hz	Operating Weight	225 lbs. / 102 kg.

BOILER TEMPERATURE RISE / PRESSURE DROP

25°F / 13.9°C				30°F / 16.7°C				35°F / 19.4°C			
Flow Rate		Pressure Drop		Flow Rate		Pressure Drop		Flow Rate		Pressure Drop	
GPM	L/s	Ft	kPa	GPM	L/s	Ft	kPa	GPM	L/s	Ft	kPa
14.6	.9	14.0	41.8	12.2	.8	10.1	30.2	10.4	.7	8.0	23.9

BOILER / WATER HEATER TRIM & CONTROLS

Main Gas Valve	Sit 848 Sigma	Air Switch	HUBA
Ignition Control	Argus	Blower Motor	EBM
Operating Control	Argus	Relief Valve - IW	3/4" x 3/4" @ 125 psi
High Limit	J2D-AOVJ	Relief Valve - IB	3/4" x 3/4" @ 50 psi

WATER HEATER HOURLY RECOVERY CAPACITY (GPH & LPH)

40°F	22°C	60°F	33°C	80°F	44°C	100°F	56°C	120°F	67°C	140°F	78°C
566	2140	377	1427	283	1070	226	856	189	713	162	611

A.S.M.E.

ASME Sect IV Htg Surface	4.80 Sq. Ft. / .45 Sq. M.	Design Data	Max. 160 psig & 210°F
Water Volume	1.7 gal / 6.43 Liters		

- \* Add circulator amps.  
\*\* For incoming gas pressures lower than 3" W.C. natural or propane, consult factory.

REP FIRM \_\_\_\_\_

SUBMITTED BY \_\_\_\_\_

JOB NAME \_\_\_\_\_

ARCHITECT \_\_\_\_\_

ENGINEER \_\_\_\_\_

CONTRACTOR \_\_\_\_\_

DATE \_\_\_\_\_

**INFINITE ENERGY 2-199**

**Category II or IV Appliance**

(see Installation and Operation Manual for venting information)

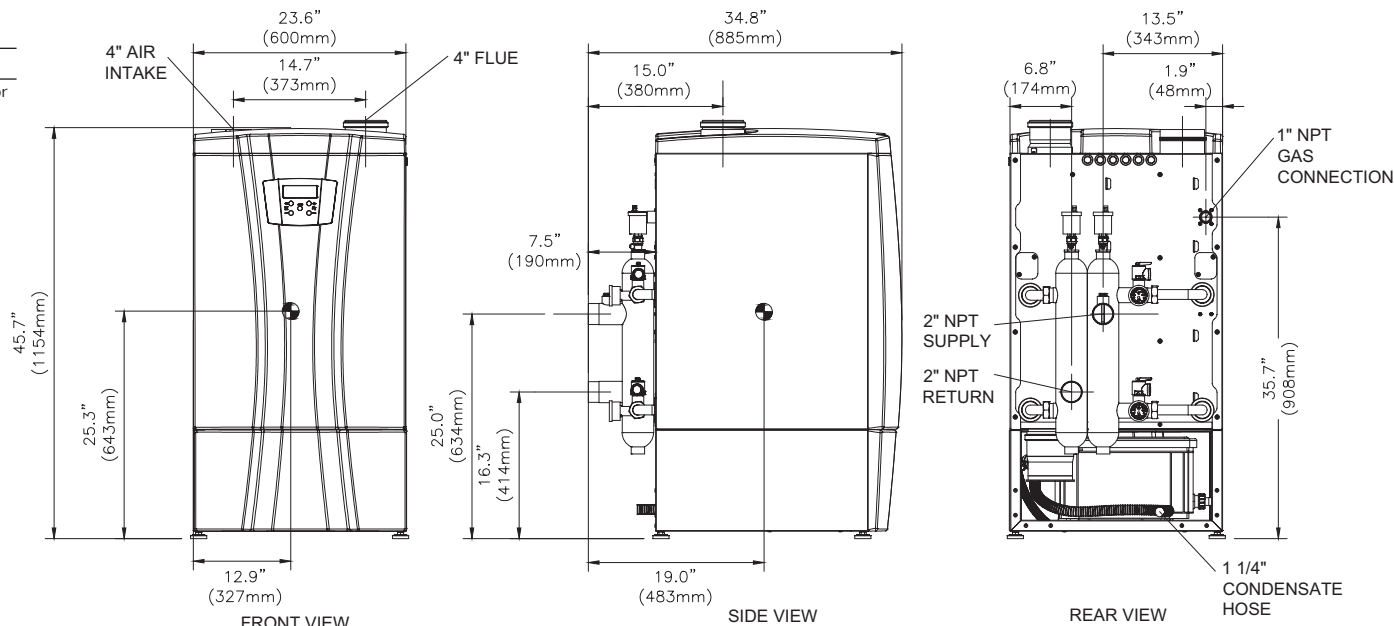
**RBI**® A Division of Mestek, Inc.  
Westfield, MA 01085  
(413) 568-9571

RELIABLE. BOLD. INNOVATIVE.

CODE OPTIONS

CSD-1*	Manual Reset LWCO
*Argus control is factory programmed for one ignition trial.	

RSUB-192.A



- Notes:**
- 1. Dimensions are approximate and should not be used to "rough-in" equipment.
  - 2. Dimensions are subject to change without notice.
  - 3. ⦿ Symbol indicates center of gravity.

BOILER CERTIFIED RATINGS & CAPACITIES

Fuel Type	Natural/Propane Gas	Boiler FLA	1.83*
Input BTU/hr.	399,000 / 117 kW	Min. Gas Pressure Required	3" W.C.**
Output BTU/hr.	375,858 / 110 kW	Max. Gas Pressure Allowed	13" W.C.
Electrical Requirements	120VAC/ 1 ph/ 60 hz	Operating Weight	340 lbs. / 154 kg.

BOILER TEMPERATURE RISE / PRESSURE DROP

25°F / 13.9°C				30°F / 16.7°C				35°F / 19.4°C			
Flow Rate		Pressure Drop		Flow Rate		Pressure Drop		Flow Rate		Pressure Drop	
GPM	L/s	Ft	kPa	GPM	L/s	Ft	kPa	GPM	L/s	Ft	kPa
30.1	1.9	18.0	53.8	25.1	1.6	12.5	37.4	21.5	1.4	8.5	25.4

BOILER / WATER HEATER TRIM & CONTROLS

Main Gas Valve	Sit 848 Sigma	Air Switch	HUBA
Ignition Control	Argus	Blower Motor	EBM
Operating Control	Argus	Relief Valve - IW	3/4" x 3/4" @ 125 psi
High Limit	J2D-AOVJ	Relief Valve - IB	3/4" x 3/4" @ 50 psi

WATER HEATER HOURLY RECOVERY CAPACITY (GPH & LPH)

40°F	22°C	60°F	33°C	80°F	44°C	100°F	56°C	120°F	67°C	140°F	78°C
1154	4364	770	2909	577	2182	462	1745	385	1455	330	1247

A.S.M.E.

ASME Sect IV Htg Surface	9.60 Sq. Ft. / .90 Sq. M.	Design Data	Max. 160 psig & 210°F
Water Volume	3.4 gal / 12.87 Liters		

\* Add circulator amps.  
\*\* For incoming gas pressures lower than 3" W.C. natural or propane, consult factory.

REP FIRM \_\_\_\_\_

SUBMITTED BY \_\_\_\_\_

JOB NAME \_\_\_\_\_

ARCHITECT \_\_\_\_\_

ENGINEER \_\_\_\_\_

CONTRACTOR \_\_\_\_\_

DATE \_\_\_\_\_

**INFINITE ENERGY 2-399**

**Category II or IV Appliance**

(see Installation and Operation Manual for venting information)

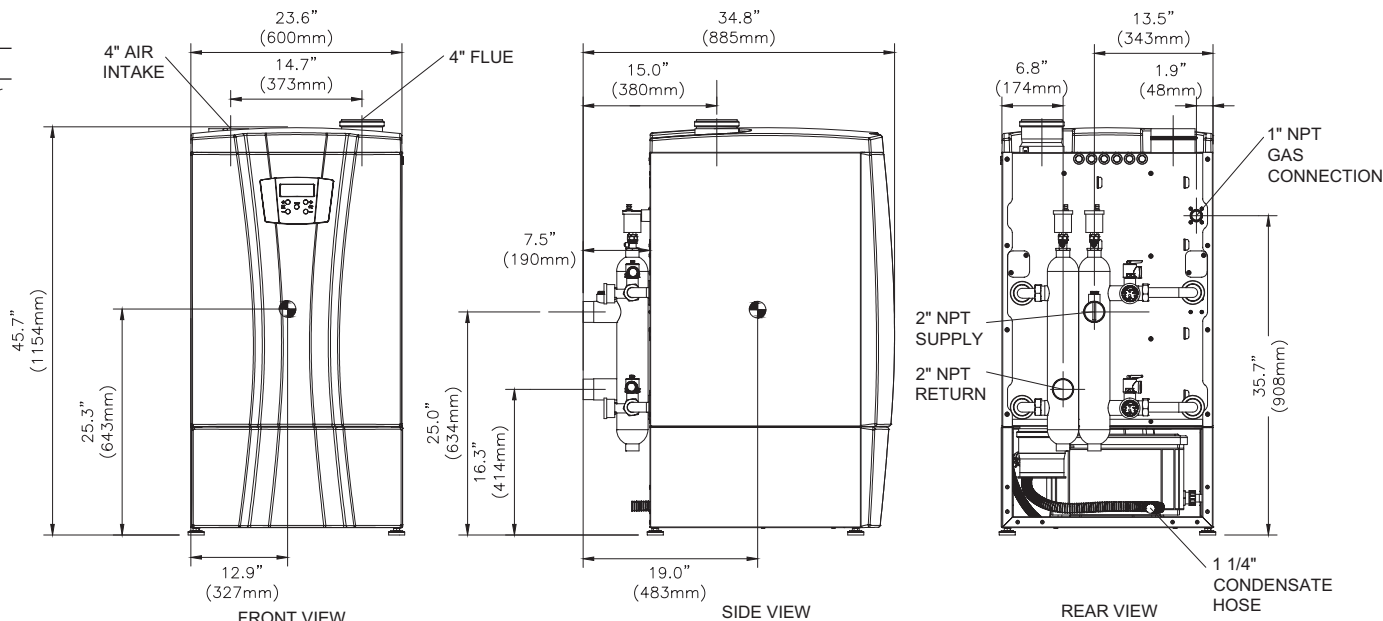
**RBI**® A Division of Mestek, Inc.  
Westfield, MA 01085  
(413) 568-9571

RELIABLE. BOLD. INNOVATIVE.

CODE OPTIONS

CSD-1*	Manual Reset LWCO
*Argus control is factory programmed for one ignition trial.	

RSUB-193.A



- Notes:**
- 1. Dimensions are approximate and should not be used to "rough-in" equipment.
  - 2. Dimensions are subject to change without notice.
  - 3. ⬤ Symbol indicates center of gravity.

BOILER CERTIFIED RATINGS & CAPACITIES

Fuel Type	Natural/Propane Gas	Boiler FLA	2.50*
Input BTU/hr.	500,000 / 147 kW	Min. Gas Pressure Required	3" W.C.**
Output BTU/hr.	472,000 / 138 kW	Max. Gas Pressure Allowed	13" W.C.
Electrical Requirements	120VAC/ 1 ph/ 60 hz	Operating Weight	356 lbs. / 162 kg.

BOILER TEMPERATURE RISE / PRESSURE DROP

25°F / 13.9°C				30°F / 16.7°C				35°F / 19.4°C			
Flow Rate		Pressure Drop		Flow Rate		Pressure Drop		Flow Rate		Pressure Drop	
GPM	L/s	Ft	kPa	GPM	L/s	Ft	kPa	GPM	L/s	Ft	kPa
37.8	2.4	33.0	98.6	31.5	1.9	23.0	68.7	27.0	1.7	17.0	50.8

BOILER / WATER HEATER TRIM & CONTROLS

Main Gas Valve	Sit 848 Sigma	Air Switch	HUBA
Ignition Control	Argus	Blower Motor	EBM
Operating Control	Argus	Relief Valve - IW	3/4" x 3/4" @ 125 psi
High Limit	J2D-AOVJ	Relief Valve - IB	3/4" x 3/4" @ 50 psi

WATER HEATER HOURLY RECOVERY CAPACITY (GPH & LPH)

40°F	22°C	60°F	33°C	80°F	44°C	100°F	56°C	120°F	67°C	140°F	78°C
1460	5519	973	3679	730	2760	584	2208	487	1840	417	1577

A.S.M.E.

ASME Sect IV Htg Surface	12.00 Sq. Ft. / 1.125 Sq. M.	Design Data	Max. 160 psig & 210°F
Water Volume	4.0 gal / 15.41 Liters		

- \* Add circulator amps.  
\*\* For incoming gas pressures lower than 3" W.C. natural or propane, consult factory.

**REP FIRM** \_\_\_\_\_

**SUBMITTED BY** \_\_\_\_\_

**JOB NAME** \_\_\_\_\_

**ARCHITECT** \_\_\_\_\_

**ENGINEER** \_\_\_\_\_

**CONTRACTOR** \_\_\_\_\_

**DATE** \_\_\_\_\_

**INFINITE ENERGY 2-500**

**Category II or IV Appliance**

(see Installation and Operation Manual for venting information)

**RBI**® A Division of Mestek, Inc.  
Westfield, MA 01085  
(413) 568-9571

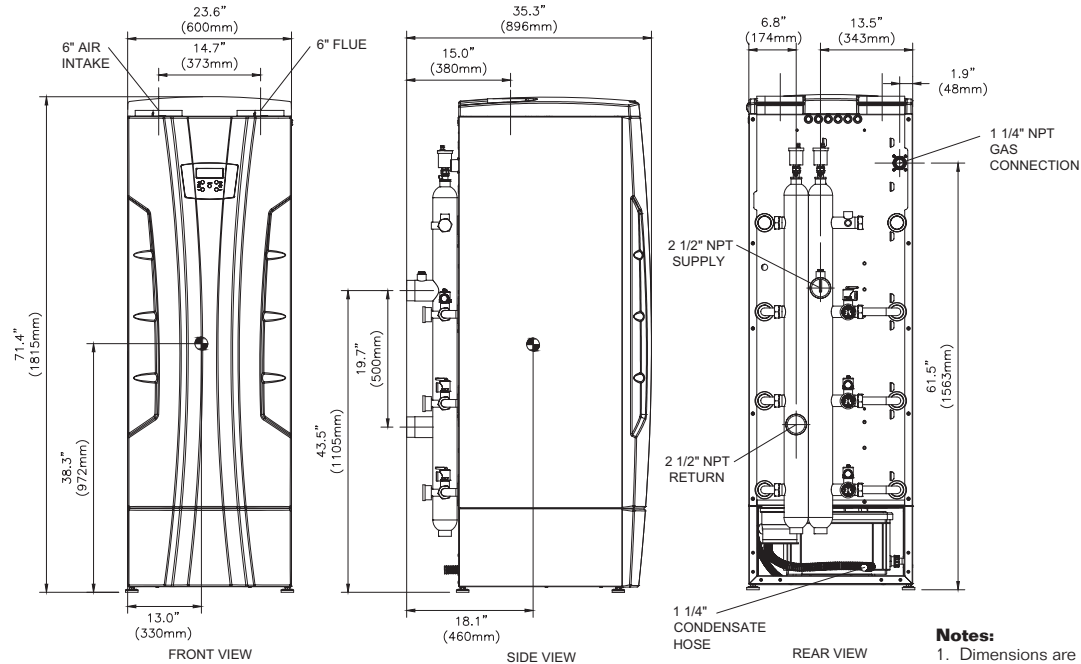
RELIABLE. BOLD. INNOVATIVE.

CODE OPTIONS

CSD-1*	Manual Reset LWCO
--------	-------------------

\*Argus control is factory programmed for one ignition trial.

RSUB-194.A



- Notes:**
- 1. Dimensions are approximate and should not be used to "rough-in" equipment.
  - 2. Dimensions are subject to change without notice.
  - 3. ⦿ Symbol indicates center of gravity.

BOILER CERTIFIED RATINGS & CAPACITIES

Fuel Type	Natural/Propane Gas	Boiler FLA	3.58*
Input BTU/hr.	750,000 / 220 kW	Min. Gas Pressure Required	3" W.C.**
Output BTU/hr.	711,000 / 208 kW	Max. Gas Pressure Allowed	13" W.C.
Electrical Requirements	120VAC/ 1 ph/ 60 hz	Operating Weight	522 lbs. / 237 kg.

BOILER TEMPERATURE RISE / PRESSURE DROP

25°F / 13.9°C				30°F / 16.7°C				35°F / 19.4°C			
Flow Rate		Pressure Drop		Flow Rate		Pressure Drop		Flow Rate		Pressure Drop	
GPM	L/s	Ft	kPa	GPM	L/s	Ft	kPa	GPM	L/s	Ft	kPa
56.9	3.6	34.0	101.6	47.4	2.9	24.5	73.2	40.6	2.6	18.0	53.8

BOILER / WATER HEATER TRIM & CONTROLS

Main Gas Valve	Sit 848 Sigma	Air Switch	HUBA
Ignition Control	Argus	Blower Motor	EBM
Operating Control	Argus	Relief Valve - IW	3/4" x 3/4" @ 125 psi
High Limit	J2D-AOVJ	Relief Valve - IB	3/4" x 3/4" @ 50 psi

WATER HEATER HOURLY RECOVERY CAPACITY (GPH & LPH)

40°F	22°C	60°F	33°C	80°F	44°C	100°F	56°C	120°F	67°C	140°F	78°C
2127	8040	1418	5360	1064	4020	851	3216	709	2680	608	2297

A.S.M.E.

ASME Sect IV Htg Surface	18.00 Sq. Ft. / 1.68 Sq. M.	Design Data	Max. 160 psig & 210°F
Water Volume	7.0 gal / 26.50 Liters		

\* Add circulator amps.  
\*\* For incoming gas pressures lower than 3" W.C. natural or propane, consult factory.

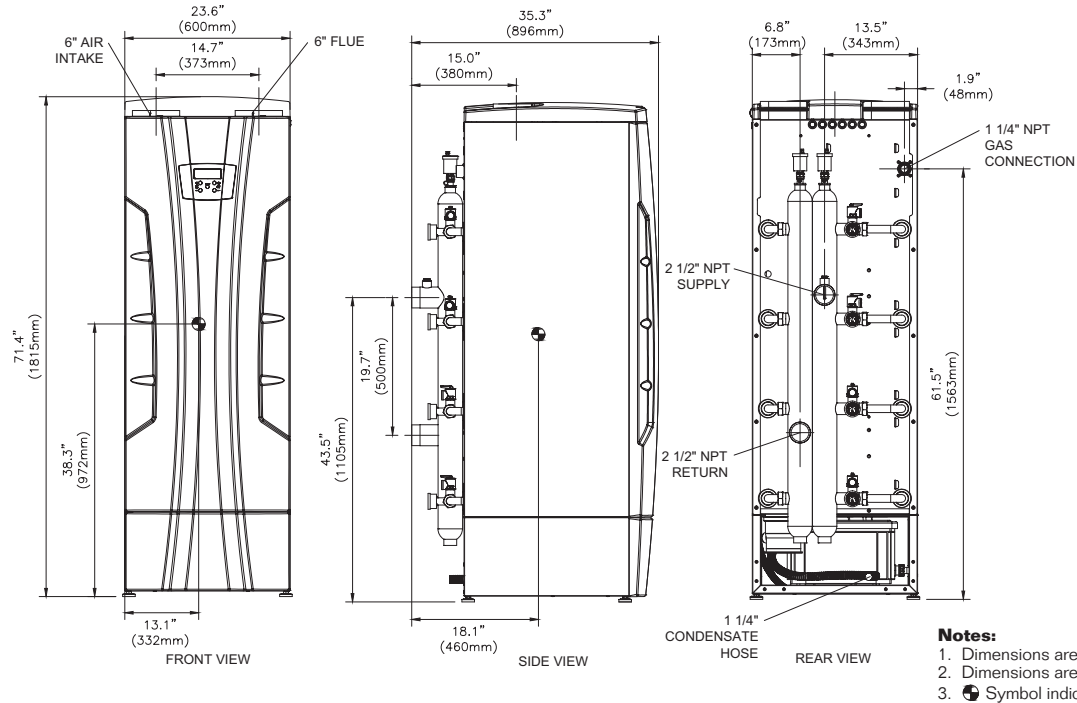
REP FIRM	_____	<b>INFINITE ENERGY 2-750</b>  <b>Category II or IV Appliance</b> (see Installation and Operation Manual for venting information)  <b>RBI</b> ® A Division of Mestek, Inc. Westfield, MA 01085 (413) 568-9571 <small>RELIABLE. BOLD. INNOVATIVE.</small>
SUBMITTED BY	_____	
JOB NAME	_____	
ARCHITECT	_____	
ENGINEER	_____	
CONTRACTOR	_____	
DATE	_____	

CODE OPTIONS

CSD-1*	Manual Reset LWCO
--------	-------------------

\*Argus control is factory programmed for one ignition trial.

RSUB-195.A



BOILER CERTIFIED RATINGS & CAPACITIES

Fuel Type	Natural/Propane Gas	Boiler FLA	4.93*
Input BTU/hr.	1,000,000 / 293 kW	Min. Gas Pressure Required	3" W.C.**
Output BTU/hr.	952,000 / 279 kW	Max. Gas Pressure Allowed	13" W.C.
Electrical Requirements	120VAC/ 1 ph/ 60 hz	Operating Weight	623 lbs. / 283 kg.

BOILER TEMPERATURE RISE / PRESSURE DROP

25°F / 13.9°C				30°F / 16.7°C				35°F / 19.4°C			
Flow Rate		Pressure Drop		Flow Rate		Pressure Drop		Flow Rate		Pressure Drop	
GPM	L/s	Ft	kPa	GPM	L/s	Ft	kPa	GPM	L/s	Ft	kPa
76.2	4.8	42.0	125.5	63.5	4.0	28.5	85.2	54.4	3.4	21.0	62.8

BOILER / WATER HEATER TRIM & CONTROLS

Main Gas Valve	Sit 848 Sigma	Air Switch	HUBA
Ignition Control	Argus	Blower Motor	EBM
Operating Control	Argus	Relief Valve - IW	3/4" x 3/4" @ 125 psi
High Limit	J2D-AOVJ	Relief Valve - IB	3/4" x 3/4" @ 50 psi

WATER HEATER HOURLY RECOVERY CAPACITY (GPH & LPH)

40°F	22°C	60°F	33°C	80°F	44°C	100°F	56°C	120°F	67°C	140°F	78°C
2806	10607	1871	7071	1403	5304	1122	4243	935	3536	802	3031

A.S.M.E.

ASME Sect IV Htg Surface	18.00 Sq. Ft. / 1.68 Sq. M.	Design Data	Max. 160 psig & 210°F
Water Volume	9.0 gal / 34.07 Liters		

\* Add circulator amps.  
\*\* For incoming gas pressures lower than 3" W.C. natural or propane, consult factory.

REP FIRM	_____	<b>INFINITE ENERGY 2-1000</b> <b>Category II or IV Appliance</b> (see Installation and Operation Manual for venting information)  <b>RBI</b> ® A Division of Mestek, Inc. Westfield, MA 01085 (413) 568-9571 <small>RELIABLE. BOLD. INNOVATIVE.</small>
SUBMITTED BY	_____	
JOB NAME	_____	
ARCHITECT	_____	
ENGINEER	_____	
CONTRACTOR	_____	
DATE	_____	