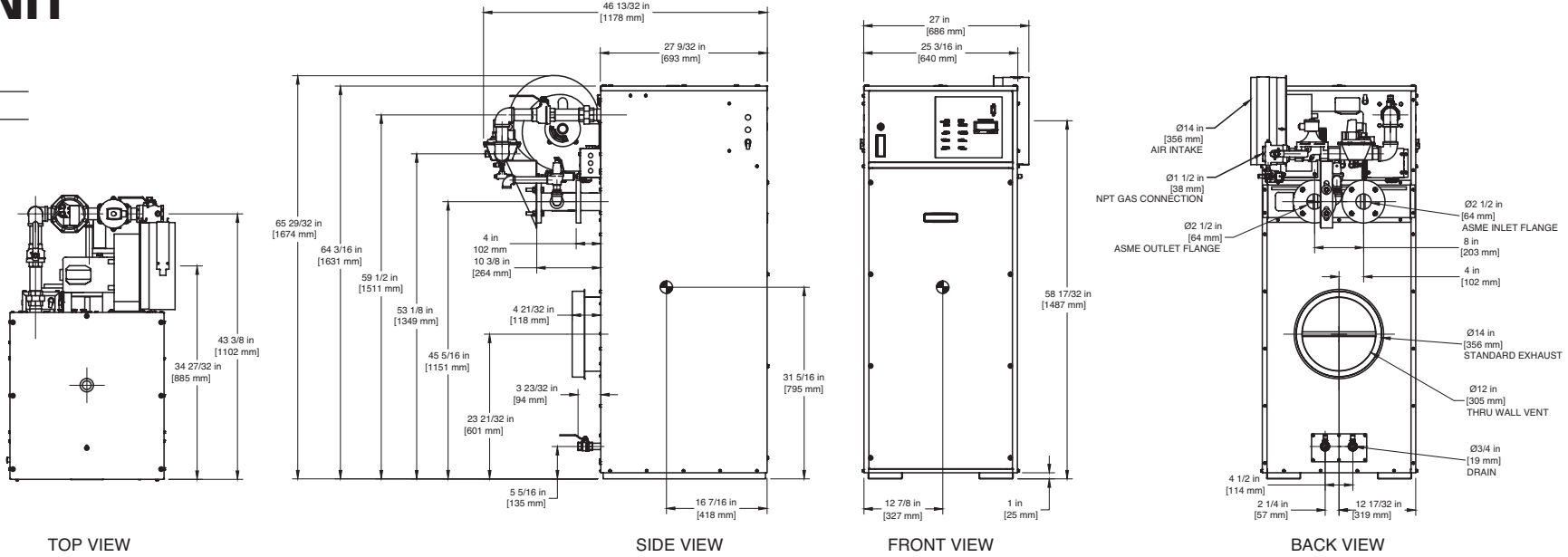


# INDOOR UNIT

RSUB-70 REV D

## CODE OPTIONS

CSD-1 Manual Reset LWCO



### Notes:

1. Dimensions are approximate and should not be used to "rough-in" equipment.
2. Dimensions are subject to change without notice.

## BOILER CERTIFIED RATINGS & CAPACITIES

<b>Fuel Type</b>	Natural/Propane Gas	<b>Boiler FLA</b>	11.5*
<b>Input BTU/hr.</b>	1,950,000 / 571 kW	<b>Min. Gas Pressure Required</b>	5" W.C.**
<b>Output BTU/hr.</b>	1,657,500 / 486 kW	<b>Max. Gas Pressure Allowed</b>	14" W.C.
<b>Electrical Requirements</b>	120 VAC / 1 ph / 60 hz	<b>Operating Weight</b>	863 lbs. / 392 kg.

## BOILER TEMPERATURE RISE / PRESSURE DROP

25°F / 13.9°C				30°F / 16.7°C				35°F / 19.4°C			
Flow Rate		Pressure Drop		Flow Rate		Pressure Drop		Flow Rate		Pressure Drop	
GPM	L/s	Ft	kPa	GPM	L/s	Ft	kPa	GPM	L/s	Ft	kPa
132.6	8.4	5.14	15.1	110.5	7.0	3.70	10.8	94.7	6.0	2.80	8.1

## BOILER / WATER HEATER TRIM & CONTROLS

<b>Main Gas Valve</b>	V4944B	<b>Main Ball Valve</b>	1 1/2"
<b>Firing Valve</b>	1 1/2"	<b>Pilot Regulator</b>	White-Rodgers 25M
<b>Safety Valve</b>	ASCO L8214G 1 1/2"	<b>Air Switch</b>	HUBA
<b>Ignition Control</b>	Honeywell RM7897C	<b>Blower Motor</b>	Marathon 3/4 hp - FLA 9.8
<b>Operating Control (FB/FW)</b>	Jumo	<b>Relief Valve - FB</b>	1" x 1 1/4" set @ 50 psi
<b>High Limit</b>	Honeywell L4008E	<b>Relief Valve - FW</b>	3/4" x 3/4" set @ 125 psi
		<b>Flow Switch</b>	TACO

## WATER HEATER HOURLY RECOVERY CAPACITY (GPH & LPH)

40°F	22°C	60°F	33°C	80°F	44°C	100°F	56°C	120°F	67°C	140°F	78°C
4976	18809	3317	12539	2488	9405	1990	7524	1659	6270	1422	5374

## A.S.M.E.

<b>ASME Sect IV Htg Surface</b>	215.98 Sq. Ft. / 20.06 Sq. M.	<b>Design Data</b>	Max. 160 psig & 250°F
<b>Water Volume</b>	5.7 gal / 21.6 Liters		

\* Add circulator amps.

\*\* For incoming gas pressures lower than 5" W.C. natural or 11" W.C. propane, consult factory.

REP FIRM \_\_\_\_\_

SUBMITTED BY \_\_\_\_\_

JOB NAME \_\_\_\_\_

ARCHITECT \_\_\_\_\_

ENGINEER \_\_\_\_\_

CONTRACTOR \_\_\_\_\_

DATE \_\_\_\_\_

# FUTERA II 1950

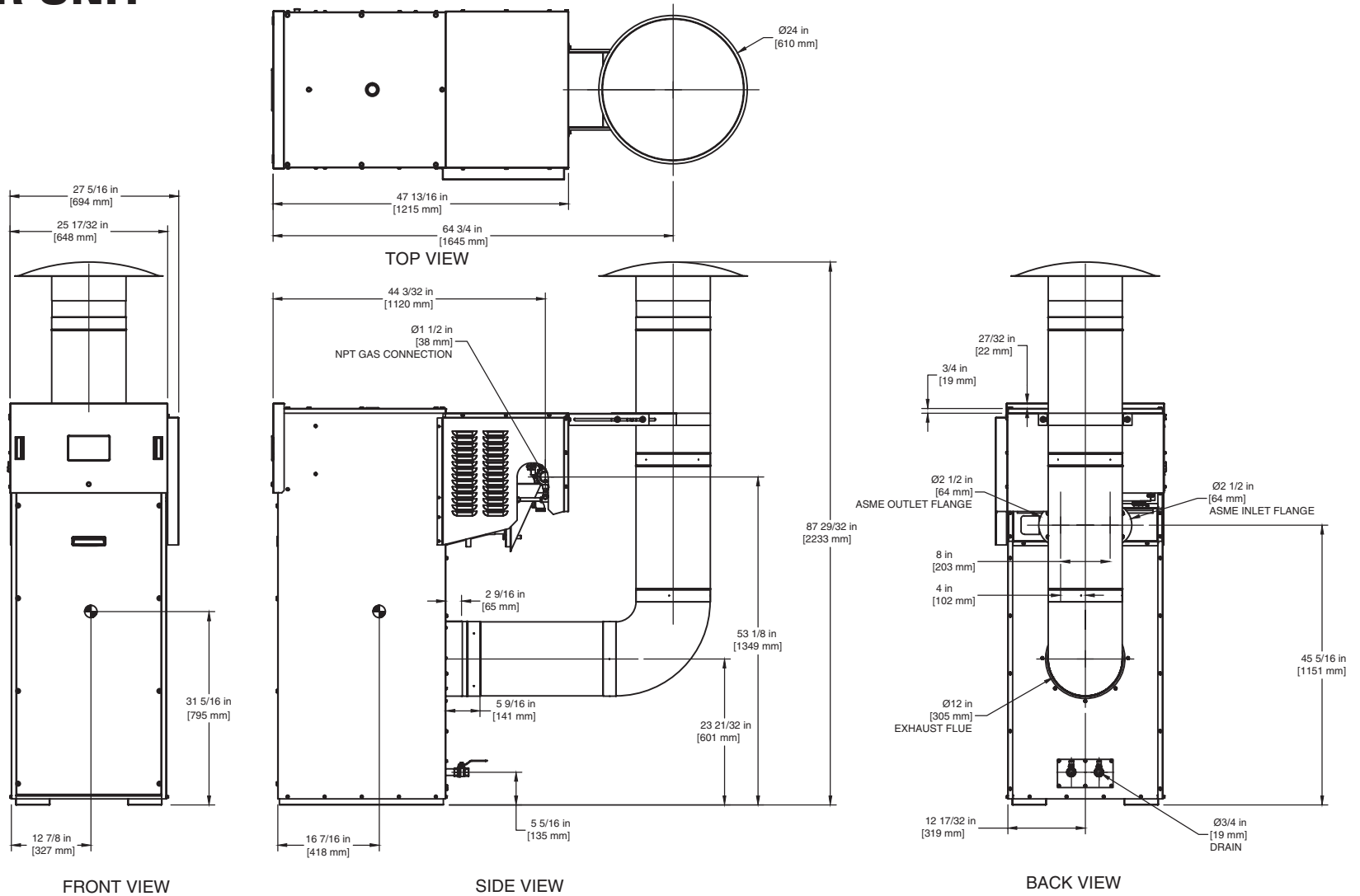
**Category I or Category III Appliance**  
(see Installation and Operation Manual for venting information)

**RBI**<sup>®</sup>  
RELIABLE. BOLD. INNOVATIVE.

A Division of Mestek, Inc.  
Westfield, MA 01085  
(413) 568-9571

# OUTDOOR UNIT

RSUB-157



## FUTERA II 1950

**Notes:**

1. Dimensions are approximate and should not be used to "rough-in" equipment.
2. Dimensions are subject to change without notice.