

1/4HP, 3.6A (500-1000MBH)
1/2HP, 8.2A (1250-1500MBH)
3/4HP, 9.8A (1750-1950MBH)

SAFETY VALVE
ASCO 8214G

MAIN VALVE
V4944B

CV1000SNW
120VAC REG./
PILOT VALVE

AIR FLOW
SWITCH

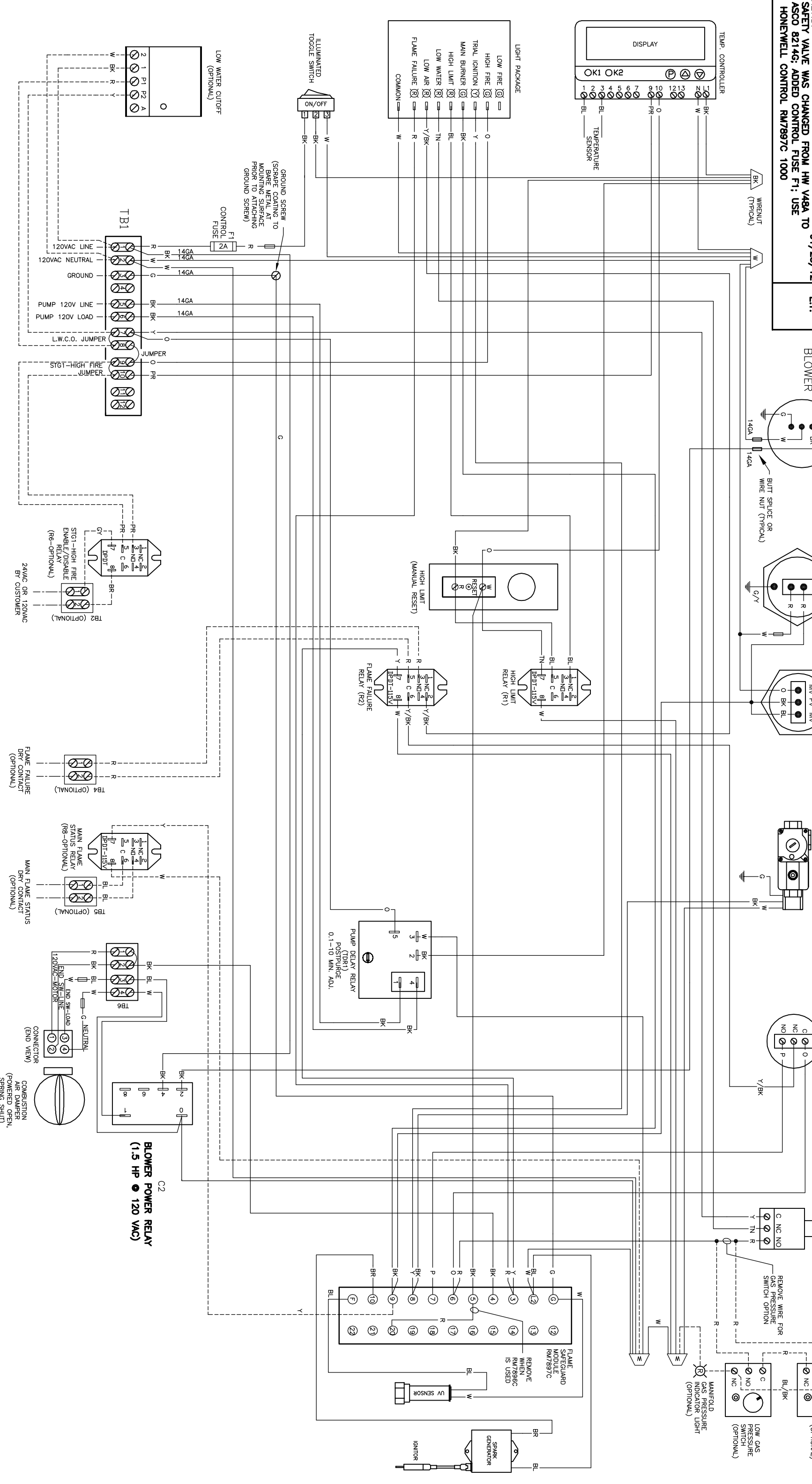
WATER FLOW
SWITCH

HIGH GAS
PRESSURE
SWITCH (OPTIONAL)

LOW GAS
PRESSURE
SWITCH (OPTIONAL)

MANIFOLD
GAS PRESSURE
INDICATOR LIGHT
(OPTIONAL)

RELEASED UNDER ECN	12/12/05	E.T.
REV.B: USE THE PILOT VALVE CV1000SNW	07/11/06	E.T.
REV.C: REMOVE BLOWER TDR.	01/23/12	E.T.
REV.D: SAFETY VALVE WAS CHANGED FROM HW V494 TO ASCO 8214G; ADDED CONTROL FUSE F1; USE HONEYWELL CONTROL RM7897C 1000		

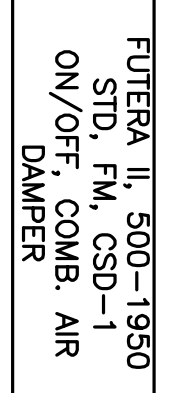


BK-BLACK	W-WHITE
BL-BLUE	GY-GRAY
BR-BROWN	PR-PURPLE
G-GREEN	Y-YELLOW
P-PINK	O-ORANGE
Y/BK-YELLOW/BLACK	R-RED
BL/BK-BLUE/BLACK	TN-TAN

FACTORY WIRING	---
FIELD WIRING	---
OPTION WIRING	---

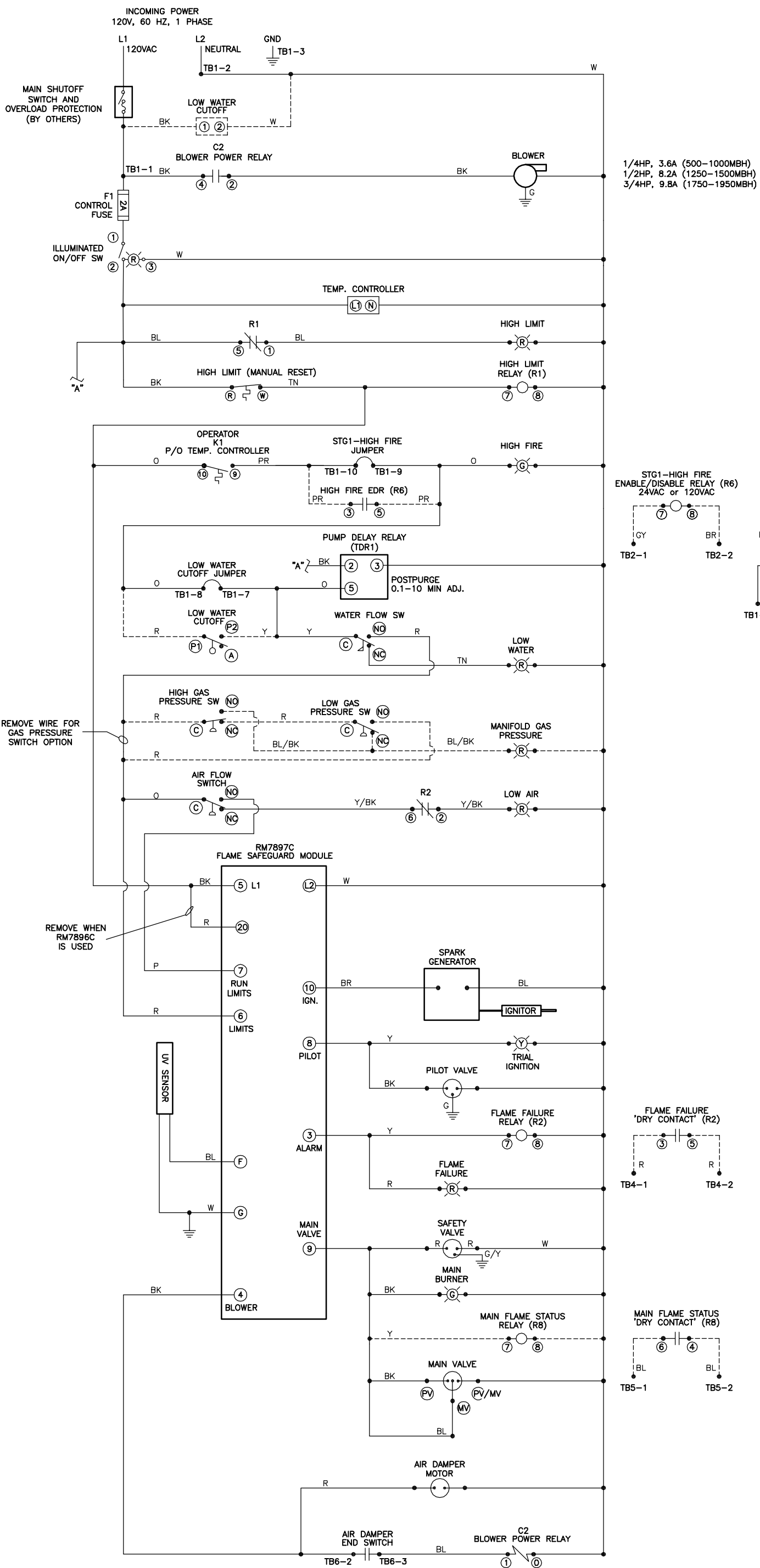
NOTES:
 1. ALL WIRES SHALL BE #18AWG UNLESS SPECIFIED. WIRE TYPE SHALL BE TW, 600V, STRANDED 16X30, WITH INSULATION RATED FOR 105°C OR EQUIVALENT.
 2. USE CABLE TIES, CABLE FASTENERS, SPADE TERMINALS, MALE CONNECTORS, WIRENUTS, ETC. AS REQUIRED.
 3. REMOVE LOW FIRE AND HIGH FIRE JUMPER(S) WHEN THERMOSTAT OR OTHER DEMAND CONTROL IS USED.
 REMOVE LOW WATER CUTOFF JUMPER WHEN LOW WATER CUTOFF IS USED.

THIS PRINT AND ALL INFORMATION APPEARING THEREON IS THE PROPERTY OF WESTEK INC. NEITHER THE PRINT NOR THE INFORMATION THEREON MAY BE REPRODUCED OR USED IN ANY MANNER WHATSOEVER OR DIVULGED TO ANY OTHER PERSON UNLESS SPECIFICALLY AUTHORIZED BY WESTEK INC.

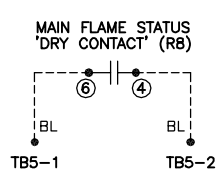
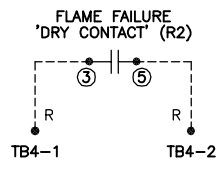
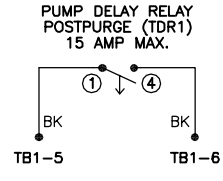
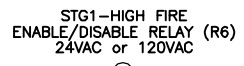


FUTERA II, 500-1950 STD, FM, CSD-1 ON/OFF, COMB. AIR DAMPER	
SCALE: NONE	SHEET: 1 OF 2
DR. BY: AC	DATE: 1/24/05
CK. BY: ET	DATE: 4/28/05
DWG. SIZE: B	DRAWING NUMBER: 42-0903
	REV. F

RELEASED UNDER ECN	CHANGES	APPR. BY
REV.B: USE THE PILOT VALVE CV10005NW	12/12/05	E.T.
REV.C: REMOVE BLOWER TDR.	07/11/06	E.T.
REV.D: SAFETY VALVE WAS CHANGED FROM HW V48A TO ASCO 8214g; ADDED CONTROL FUSE F1; USE HONEYWELL CONTROL RM7897C 1000	01/23/12	E.T.



1/4HP, 3.6A (500-1000MBH)
1/2HP, 8.2A (1250-1500MBH)
3/4HP, 9.8A (1750-1950MBH)



COLOUR CODE:
BK-BLACK
BL-BLUE
BR-BROWN
G-GREEN
P-PINK
Y-YELLOW
W-WHITE
GR-GRAY
PR-PURPLE
O-ORANGE
R-RED
TN-TAN

WIRE CODE:
FACTORY WIRING
OPTION WIRING

NOTES:
1. REMOVE LOW FIRE AND HIGH FIRE JUMPER(S) WHEN THERMOSTAT OR OTHER DEMAND CONTROL IS USED.
REMOVE LOW WATER CUTOFF JUMPER WHEN LOW WATER CUTOFF IS USED.

THIS PRINT AND ALL INFORMATION APPEARING THEREON IS THE PROPERTY OF THE RIB DIVISION OF WESTERK INC. NEITHER THE PRINT NOR THE INFORMATION THEREON MAY BE REPRODUCED OR USED IN ANY MANNER WHATSOEVER OR DIVULGED TO ANY OTHER PERSON UNLESS SPECIFICALLY AUTHORIZED BY WESTERK INC.

RIB WATER HEATERS
250 North Elm Street
Westfield, Mass. 01085

FUTERA II, 500-1950 STD, FM, CSD-1 ON/OFF, AIR DAMPER

SCALE:	NONE	SHEET:	2 of 2	DWG. SIZE:	B
DR. BY:	AC	DATE:	1/24/05	DRAWING NUMBER:	42-0903
CK. BY:	ET	DATE:	4/28/05		

LADDER DIAGRAM