

# DOMINATOR 1950

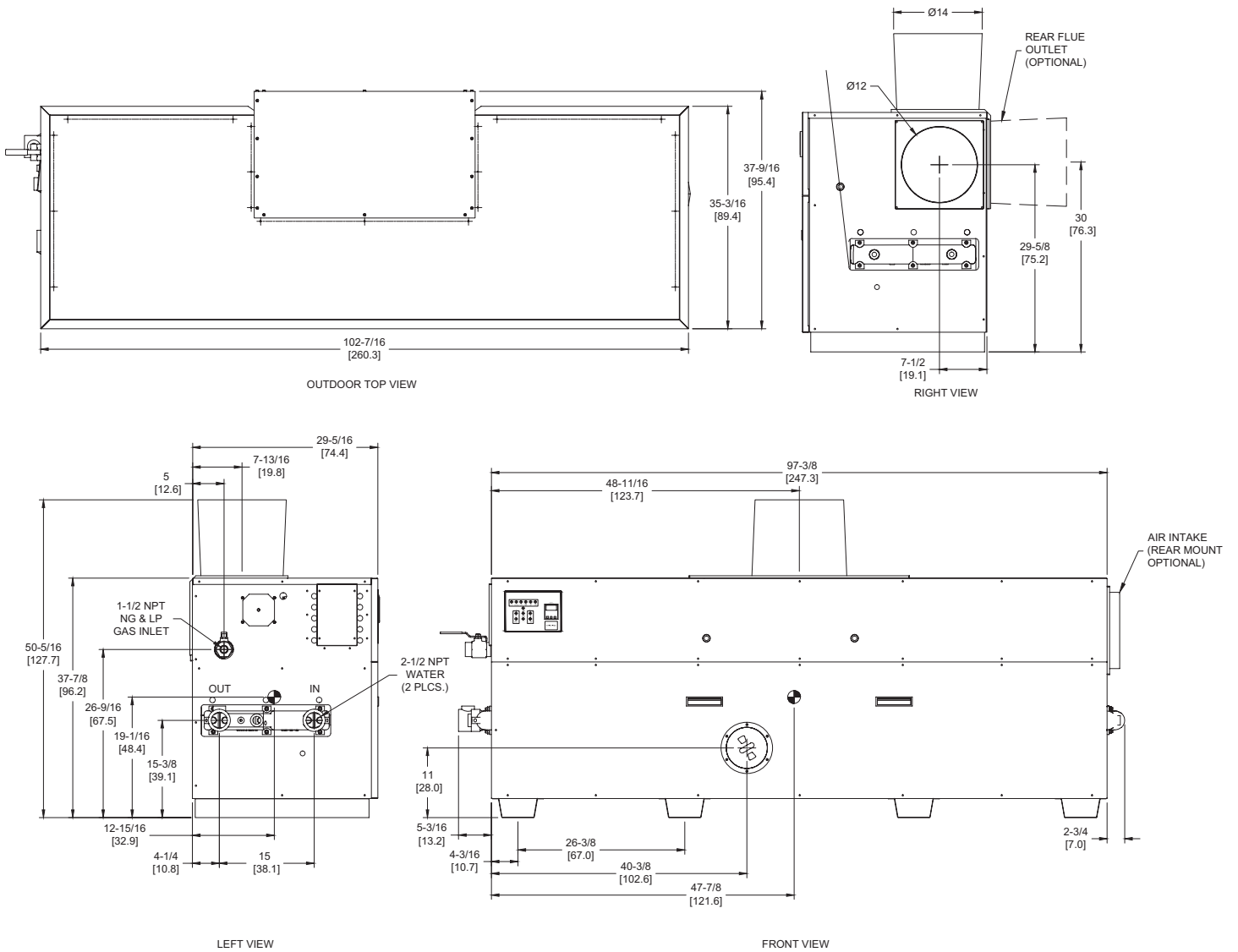
Category I or Category III Appliance

(see Installation and Operation Manual for venting information)

## CODE OPTIONS

CSD-1

UTC Lockout/Reset Control  
Manual Reset LWCO



RSUB-35-G

**Dominator 1950 model water heater not available for sale in Canada due to NRCan Regulations.**

**Notes:**

1. Dimensions are approximate and should not be used to "rough-in" equipment.
2. Dimensions are subject to change without notice.
3. All dimensions are in inches (cm).
4. Symbol indicates center of gravity.

SDOM-1950-11

## BOILER CERTIFIED RATINGS & CAPACITIES

<b>Fuel Type</b>	Natural/Propane Gas	<b>Boiler FLA</b>	11.0*
<b>Input BTU/hr.</b>	1,950,000 / 572 kW	<b>Min. Gas Pressure Required</b>	7" WC**
<b>Output BTU/hr.</b>	1,638,000 / 480 kW	<b>Max. Gas Pressure Allowed</b>	14" WC
<b>Electrical Requirements</b>	120VAC/ 1 ph/ 60 hz	<b>Operating Weight</b>	1088 lbs. / 494 kg.

## BOILER / WATER HEATER TRIM & CONTROLS

<b>Main Gas Valve</b>	Honeywell (2) V8944 1"	<b>Pilot Valve</b>	Honeywell VR8205
<b>Firing Valve</b>	Honeywell (2) B200T1033 1"	<b>Air Switch</b>	Cleveland RSS-495
<b>Safety Valve</b>	ASCO L8214G 1-1/2"	<b>Blower Motor</b>	(2) 1/4 hp - FLA 10.2
<b>Ignition Control</b>	UTC 1003-61A	<b>Relief Valve - DW</b>	3/4" x 3/4" set @ 125 psi
<b>Operating Control</b>	Tekmar BTC-2PA	<b>Relief Valve - DB</b>	3/4" x 1-1/4" set @ 50 psi
<b>Operating Control</b>	Tekmar BTC-4PA	<b>Flow Switch</b>	TACO
<b>High Limit</b>	Honeywell L4008E		

## A.S.M.E.

<b>ASME Sect IV Htg Surface</b>	189.0 Sq. Ft. / 17.56 Sq. M.	<b>Design Data</b>	Max. 160 psig & 250°F
<b>Water Volume</b>	5.4 gal / 20.4 Liters		

\* Add circulator amps.

\*\* For incoming gas pressures lower than 7"WC natural or 11"WC propane, consult factory.

## BOILER TEMPERATURE RISE / PRESSURE DROP

30°F / 16.7°C				35°F / 19.4°C			
Flow Rate		Pressure Drop		Flow Rate		Pressure Drop	
GPM	L/s	Ft	kPa	GPM	L/s	Ft	kPa
109.2†	6.9†	8.98	26.4	93.6	5.9	6.75	19.9

† Flow exceeds recommended maximum use a greater temperature rise or consult manufacturer.  
Cupronickel heat exchanger should be considered.

## WATER HEATER HOURLY RECOVERY CAPACITY (GPH & LPH)

40°F	22°C	60°F	33°C	80°F	44°C	100°F	56°C	120°F	67°C	140°F	78°C
4799	18140	3199	12093	2399	9070	1920	7256	1600	6047	1371	5183

**Dominator 1950 model water heater not available for sale in Canada due to NRCan Regulations.**

<b>REP FIRM</b>	_____
<b>SUBMITTED BY</b>	_____
<b>JOB NAME</b>	_____
<b>ARCHITECT</b>	_____
<b>ENGINEER</b>	_____
<b>CONTRACTOR</b>	_____
<b>DATE</b>	_____

# DOMINATOR 1950

**Category I or Category III Appliance**  
(see Installation and Operation Manual for venting information)

**RBI**®  
RELIABLE. BOLD. INNOVATIVE.

A Division of Mestek, Inc.  
Westfield, MA 01085  
(413) 564-5515