

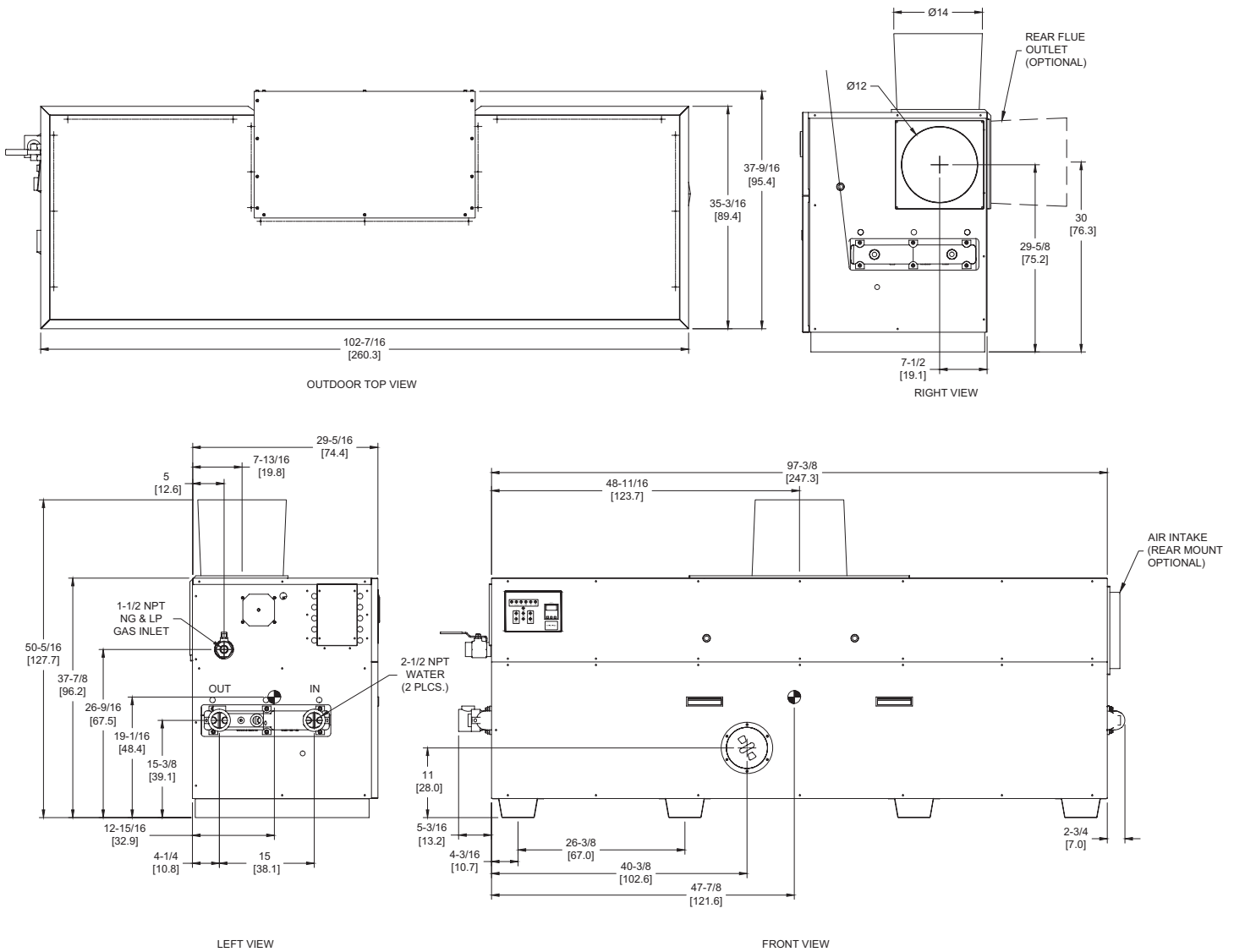
DOMINATOR 1950

Category I or Category III Appliance

(see Installation and Operation Manual for venting information)

CODE OPTIONS

| | |
|-------|---------------------------|
| CSD-1 | UTC Lockout/Reset Control |
| | Manual Reset LWCO |



RSUB-35-G

Notes:

1. Dimensions are approximate and should not be used to "rough-in" equipment.
2. Dimensions are subject to change without notice.
3. All dimensions are in inches (cm).
4. ● Symbol indicates center of gravity.

SDOM-1950-10

BOILER CERTIFIED RATINGS & CAPACITIES

| | | | |
|--------------------------------|---------------------|-----------------------------------|---------------------|
| Fuel Type | Natural/Propane Gas | Boiler FLA | 11.0* |
| Input BTU/hr. | 1,950,000 / 572 kW | Min. Gas Pressure Required | 7" WC** |
| Output BTU/hr. | 1,638,000 / 480 kW | Max. Gas Pressure Allowed | 14" WC |
| Electrical Requirements | 120VAC/ 1 ph/ 60 hz | Operating Weight | 1088 lbs. / 494 kg. |

BOILER / WATER HEATER TRIM & CONTROLS

| | | | |
|--------------------------|----------------------------|--------------------------|----------------------------|
| Main Gas Valve | Honeywell (2) V8944 1" | Pilot Valve | Honeywell VR8205 |
| Firing Valve | Honeywell (2) B200T1033 1" | Air Switch | Cleveland RSS-495 |
| Safety Valve | ASCO L8214G 1-1/2" | Blower Motor | (2) 1/4 hp - FLA 10.2 |
| Ignition Control | UTC 1003-61A | Relief Valve - DW | 3/4" x 3/4" set @ 125 psi |
| Operating Control | Tekmar BTC-2PA | Relief Valve - DB | 3/4" x 1-1/4" set @ 50 psi |
| Operating Control | Tekmar BTC-4PA | Flow Switch | TACO |
| High Limit | Honeywell L4008E | | |

A.S.M.E.

| | | | |
|---------------------------------|------------------------------|--------------------|-----------------------|
| ASME Sect IV Htg Surface | 189.0 Sq. Ft. / 17.56 Sq. M. | Design Data | Max. 160 psig & 250°F |
| Water Volume | 5.4 gal / 20.4 Liters | | |

* Add circulator amps.

** For incoming gas pressures lower than 7" WC natural or 11" WC propane, consult factory.

BOILER TEMPERATURE RISE / PRESSURE DROP

| 30°F / 16.7°C | | | | 35°F / 19.4°C | | | |
|---------------|------|---------------|------|---------------|-----|---------------|------|
| Flow Rate | | Pressure Drop | | Flow Rate | | Pressure Drop | |
| GPM | L/s | Ft | kPa | GPM | L/s | Ft | kPa |
| 109.2† | 6.9† | 8.98 | 26.4 | 93.6 | 5.9 | 6.75 | 19.9 |

† Flow exceeds recommended maximum use a greater temperature rise or consult manufacturer.
Cupronickel heat exchanger should be considered.

WATER HEATER HOURLY RECOVERY CAPACITY (GPH & LPH)

| | | | | | | | | | | | |
|------|-------|------|-------|------|------|-------|------|-------|------|-------|------|
| 40°F | 22°C | 60°F | 33°C | 80°F | 44°C | 100°F | 56°C | 120°F | 67°C | 140°F | 78°C |
| 4799 | 18140 | 3199 | 12093 | 2399 | 9070 | 1920 | 7256 | 1600 | 6047 | 1371 | 5183 |

| | |
|---------------------|-------|
| REP FIRM | _____ |
| SUBMITTED BY | _____ |
| JOB NAME | _____ |
| ARCHITECT | _____ |
| ENGINEER | _____ |
| CONTRACTOR | _____ |
| DATE | _____ |

DOMINATOR 1950

Category I or Category III Appliance
(see Installation and Operation Manual for venting information)

RBI®
RELIABLE. BOLD. INNOVATIVE.

A Division of Mestek, Inc.
Westfield, MA 01085
(413) 564-5515