

PERFORMANCE. VALUE. SELECTION. MEET RBI.



RBI®
RELIABLE. BOLD. INNOVATIVE.

CONDENSING BOILERS

RBI offers the most versatile line of equipment offerings in the industry.

Our ultra-high efficiency condensing boilers and water heaters offer both firetube and watertube solutions with AHRI Certified efficiencies of over 98%.

Meeting the demands of tomorrow, today.

Reliable. Bold. Innovative. That is RBI.

Encore™

350–850 MBH | 10:1 Modulation*

Encore™ firetube boilers are the perfect solution for today's smaller commercial applications.

Incorporating all industry-proven components including HeatNet 3.0 touchscreen cascade control, Tru-Flow fuel/air coupling system with 10:1* turndown and capacities from 350 - 850 MBH Encore has the right equipment for all of today's energy conscious installations.

Encore uses a pressure driven mixing system with no moving parts for the industry's most reliable 10:1* turndown, without lowering the CO2%, all while avoiding nuisance ignition lockouts.

Features and Benefits

- 350 - 850 MBH
- +98% AHRI Certified*
- Full Modulation (Up to 10:1*)
- Stainless Steel Heat Exchanger (160 PSI/ASME H)
- Variable Volume, Full Flow and Primary/Secondary
- Sika Vortex Flow Sensor
- HeatNet 3.0 Integrated Control Platform
- Touchscreen Programming and Diagnostics
- Remote Monitoring Capable
- Modbus, LonWorks and BACnet BMS Integration
- Category II and IV (up to 100' Direct and Sidewall)
- Concentric Vent Kits (sidewall and vertical 400 - 600 MBH)
- PVC/CPVC, Polypropylene and Stainless Steel Vent Approved
- NG/LP/Dual Fuel
- Easy Maintenance and Installation
- Outdoor Installation
- Low Nox
- Energy Star Certified

*Efficiencies and turndown vary by size.



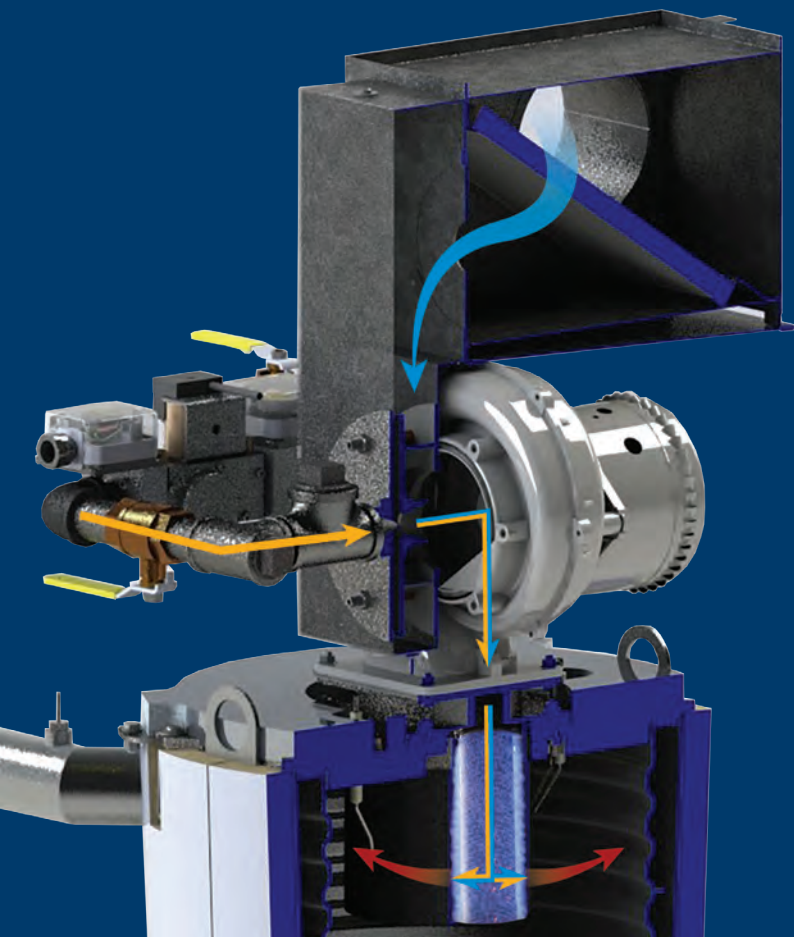
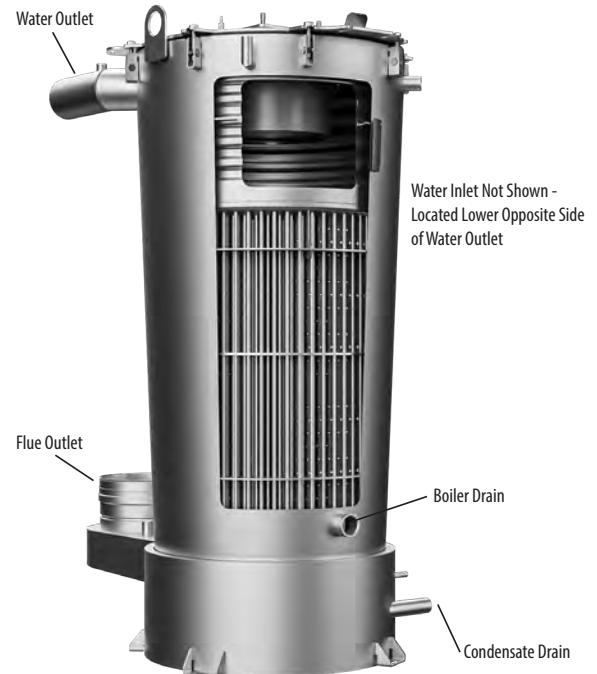
Heat Exchanger

Encore firetube heat exchangers are designed for optimum performance and durability. Made from an industrial quality stainless steel Encore heat exchangers are reliable and robust with superior corrosion resistance.

Encore's heat exchanger is manufactured using a unique geometry of firetube design for maximum heat transfer by creating a "turbulent" flow of flue gases allowing Encore to "scrub" every last bit of energy efficiency across its large surface area for peak performance. Its anti-scaling baffling system is essentially self-cleaning, further ensuring product durability and corrosion resistance over the long haul.

Modulation

10:1* modulation works in perfect concert with our proven Tru-Flow neg-reg air/fuel combustion control system, insuring not only maximum performance efficiencies, but also clean, safe and reliable combustion always.



Tru-Flow Air/Fuel

Tru-Flow is instantly responsive and completely adaptable. The system reacts to changes in air and instantly compensates fuel supply by adjusting input to maintain a constant air/fuel mixture across the modulation range, while increasing combustion efficiency and maintaining low emissions.

Encore boilers are capable of reliable full-fire performance at just 4" of gas pressure.

Torus®

300–4,000 MBH | 10:1 Modulation*

Torus® watertube condensing commercial boilers and water heaters bring next level performance in a small compact footprint to today's applications.

The RBI tradition of high quality, performance equipment in a user-friendly design continues with Torus.

Incorporating all industry-proven components including HeatNet 3.0 touchscreen cascade control, Tru-Flow fuel/air coupling system with 10:1 turndown and capacities to 4000 MBH Torus has the solution for all commercial installations.

Features and Benefits

- 300 – 4000 MBH
- +97.5 AHRI Certified*
- Energy Star Certified (Boiler Only 300 -1000)
- Full Modulation (up to 10:1*)
- 4 Pass Double-Row Watertube Heat Exchanger (160 psi/ASME (H & HLW) Stamp)
- 316L Stainless Steel
- Variable Volume, Full Flow and Primary/Secondary
- Sika Flow Switch (Flow Sensor Optional)
- HeatNet 3.0 Integrated Control Platform
- Touchscreen Programming and Diagnostics
- Modbus, LonWorks and BACnet BMS Integration
- Low NOx and CO
- Easy Maintenance and Installation
- Category II and IV (up to 160')
(100' 300 - 1000 / 160' 1250 - 4000)
- PVC/CPVC, Polypropylene and Stainless Steel Vent Approved
- Warranty (Heat Exchanger): 10-year Boiler; 5-year Water Heater
- NG/LP/Dual Fuel
- Outdoor Installation
- Top Inlet/Outlet Water Connections
(Optional with Indoor Models Only 1250 - 4000)



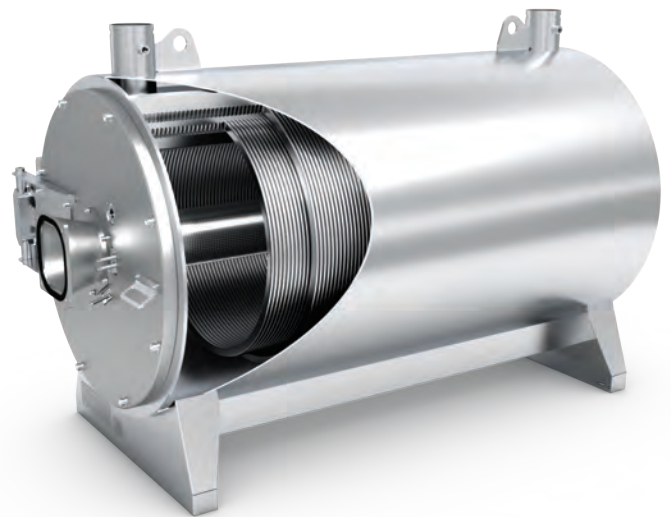
*Efficiencies and turndown vary by size.

Heat Exchanger

Torus heat exchangers are designed for optimum performance and durability. Made from an industrial quality 316L stainless steel Torus heat exchangers are reliable and robust while being very resistant to both thermal shock and acidic condensate.

A unique 4-pass design works in concert with a new multi-channel manifold and increased tube diameters resulting in ultra-high efficiency with very low pressure drop.

Torus heat exchangers are manufactured using a process called tube hydroforming. Tube hydroforming allows the shaping of stainless-steel tubes that are not only stronger and lighter but also have a higher quality surface than competitive heat exchangers maximizing both performance and durability in a compact design.



Torus' Bluejet® burner offers industry leading modulation capacity, flame retention and combustion quality. Whether natural gas or LP gas, BlueJet's low NOx design works in perfect concert with our Tru-Flow fuel/air system providing consistent reliable operation.

4-Pass Watertube Heat Exchanger

Torus heat exchangers use a 4-pass system for maximum efficiency. The unique path of water throughout the heat exchanger is designed to absorb as much heat energy as possible.

Pass 1: Return water passes through the first set of inner tubes absorbing residual heat energy.

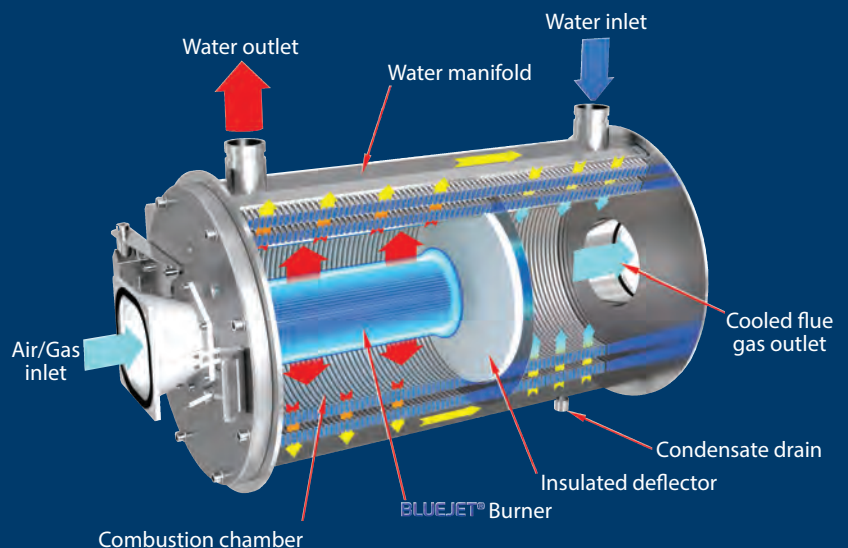
Pass 2: Water passes through the exhaust gas chamber

Pass 3: Outer tubes of the combustion chamber

Pass 4: Supply water distribution final pass through the inner tubes of the combustion chamber

Ease of Service

Torus just may be the easiest piece of equipment ever to service. A unique burner door system provides easy access to both the burner and heat exchanger tube bundle. All burner doors come with a slide and hinge mechanism that easily slides outwards offering full access to the combustion chamber for annual inspection and service.



FlexCore®

850–6,000 MBH | 10:1 Modulation*

FlexCore® Symmetrical Firetube boilers bring hydronic heating products to unprecedented levels of operating efficiency.

FlexCore was designed, developed and engineered by the experts at RBI.

Engineered for performance and longevity, FlexCore utilizes a perfectly temperature-balanced heat exchanger that provides not only the highest efficiencies but also a durability beyond that of any competitive firetube boiler on the market.

- 850 - 6,000 MBH
- 96.8% AHRI Certified*
- Full Modulation (Up to 10:1)
- O2 Monitoring
- Symmetrical Firetube Heat Exchanger
- Variable Volume, Full Flow and Primary Secondary Systems
- Sika Vortex Flow Sensor
- Patented "Turbo Pilot" 8,000 BTU/h Ignition
- HeatNet 3.0 Integrated Control Platform
- Touchscreen Programming & Diagnostics
- Modbus, LonWorks, BACnet BMS Integration
- Low NOx & CO
- Easy Installation & Maintenance
- Category II and IV (up to 160')
- PVC/CPVC & Polypropylene (PP) and Stainless Steel Vent (up to 100')
- Warranty (Heat Exchanger) 10-year; 21-Year Thermal Shock
- Natural Gas Only
- Modern Jacket Design
- Superior Durability
- Versatile Footprint Fits Through 36" Door (ALL SIZES)

*Efficiencies and turndown vary by size.



MORE INFO



All “firetube” boilers are designed to do the same thing: Heat water in an efficient manner.

That is where the comparison ends!

The RBI difference...

FlexCore Symmetrical Firetube boilers are designed for the long haul with no tradeoffs in efficiencies. In order to operate at premium condensing efficiencies many factors come into play that can affect the design, performance and, as importantly, the durability.

FlexCore is engineered to provide perfect temperature symmetry around an ultra-high efficient core. Flue gas temperatures are even and a consistent temperature rise across all the tubes results in a unrivaled $<5^{\circ}$ temperature difference across the heat exchanger with NO intra-tubular stresses as seen in many of today’s competitive designs.

RBI “flexes” its strength by design. At its core is a piston-like heat exchanger engineered to eliminate the expansion and contraction stresses seen in today’s boilers by creating a temperature balanced symmetrical upper tube sheet reminiscent of a diaphragm that absorbs the stresses from this piston-like motion at any water temperature delta.

Condensate is removed through FlexCore’s linear design resulting in ultra-high efficiencies in a compact design with minimal corrosive effects.

FlexCore scrubs every last bit of heat from the combustion gases keeping stresses low and efficiencies high at all modulation rates, making FlexCore the most efficient boiler on the market today.



The Turbo Pilot[®], Rugged & Reliable

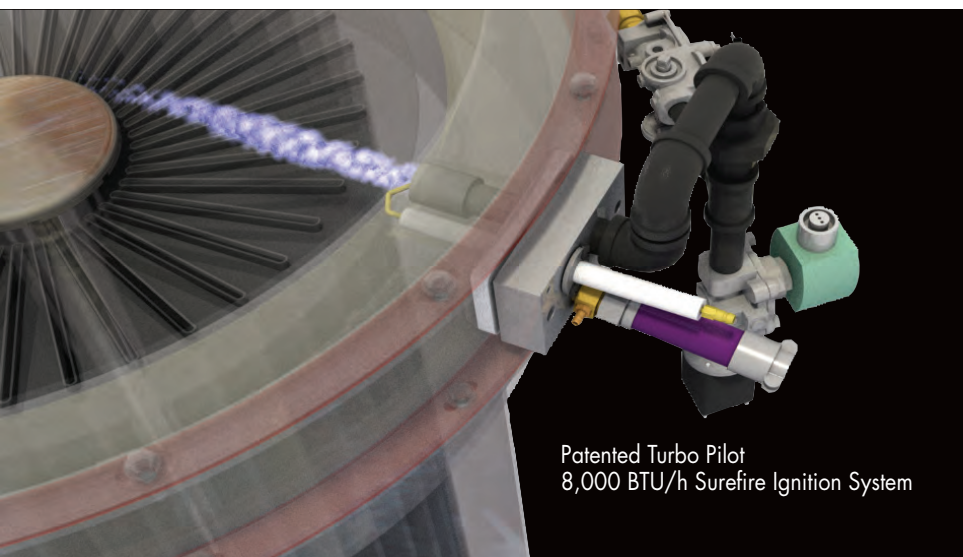
FlexCore uses our patented Turbo Pilot system.

RBI’s Turbo Pilot is a robust 8,000 BTU/h ignition system, Turbo Pilot is far more reliable and durable than any ignition system on the market.

The Turbo Pilot with UV detection gives burner ignition a surefire, powerful ignition source even in applications with fluctuating gas pressures.

SIKA Flow Sensor

All FlexCore units also come standard with SIKA vortex flow sensors to monitor boiler total flow (GPM). SIKA flow sensors utilize vortex technology which is then converted to an electrical signal sent directly to the HeatNet Boiler Management System for real time flow annunciation.



Patented Turbo Pilot
8,000 BTU/h Surefire Ignition System

Futera Fusion XLF

2,500–4,000 | 5:1 Modulation

As a fully condensing boiler and water heater, the Fusion XLF features an innovative design that brings superior power and energy efficiency with premium boiler performance and serviceability, all together in an unprecedented, industry-leading, small-package design.

Ideal for commercial boiler applications with low operating, return or make-up water temperatures, the Fusion XLF is capable of reaching efficiencies as high as 99% at full input. With full modulation up to 5:1 in a single unit, the firing system continuously varies the energy input to match the heating load without overfiring and wasting fuel – providing extremely high part-load efficiencies.

The Fusion XLF also features HeatNet 3.0, an intuitive boiler control system that monitors system characteristics and modulates boiler firing rates, maximizing turndown ratios and maintaining peak efficiency, regardless of the load.

- 2,500 - 4,000 MBH
- 95% AHRI Certified*
- Full Modulation (5:1)
- Patented "Turbo Pilot" 8,000 BTU/h Ignition
- Symmetric Air/Fuel Coupled
- HeatNet 3.0 Integrated Control Platform
- Touchscreen Programming & Diagnostics Modbus, LonWorks, BACnet BMS Integration
- Gasketless Heat Exchanger Assembly
- Low NOx & CO
- PVC & Polypropylene (PP) Venting
- Warranty (Heat Exchanger) 10-year; 21-Year Thermal Shock
- NG/LP Gas
- Fits Through 36" Door (ALL SIZES)

*Efficiencies vary by size.





Futera Fusion

500–2,000 MBH | 4:1 Modulation

Unlike most condensing boilers and water heaters that produce the highest efficiencies at the lowest inputs, the Futera Fusion can attain efficiencies as high as 99% at full input. The full modulation firing system continuously varies the energy input to precisely match heating load without overfiring or wasting fuel.

The Futera Fusion's heat exchanger was designed using a low-mass, gasketless primary heat exchanger with finned copper tube or Cupro-Nickel tubing – providing superior heat transfer, resistance to scaling and protection against thermal shock.

The condensing secondary heat exchanger is constructed from solid stainless steel and is designed to operate at the boiler's full flow rate. The unit operates in full condensing mode at all times, while a state-of-the-art temperature mixing system protects the boiler's primary heat exchanger. In addition, this design also offers a larger heat transfer surface area – more so than any competitive product currently available.

- 500 - 2,000 MBH
- 98% AHRI Certified*
- Full Modulation (4:1)
- Patented "Turbo Pilot" 8,000 BTU/h Ignition
- Symmetric Air/Fuel Coupled
- HeatNet 3.0 Integrated Control Platform
- Touchscreen Programming & Diagnostics
- Modbus, LonWorks, BACnet BMS Integration
- Gasketless Heat Exchanger Assembly
- Low NOx & CO
- PVC & Polypropylene (PP) Venting
- Warranty (Heat Exchanger) 10-year; 21-Year Thermal Shock
- NG/LP Gas
- Fits Through 36" Door (ALL SIZES)

*Efficiencies vary by size.



MORE INFO



POOL HEATERS

It's a well-known fact that pools are an investment – and these investments require maintenance. With that in mind, what's the use of a pool heater that will kick the proverbial bucket before the summer is over? RBI's commercial pool heaters are built to outlast the competition – and the busy summer season – year after year.

Infinite Energy₂

199–1,000 MBH | Up To 20:1 Modulation

Infinite Energy₂ is available from 199 to 1000 MBH, providing flexible solutions for all of your heating and domestic hot water system needs. Utilizing state-of-the-art Radial Variable Circulation (RVC) stainless steel heat exchangers, IE₂ maximizes heat transfers and can achieve operating efficiencies up to 98%.

Using all of today's modern technologies, including pre-mix burners, modulating firing rates up to 20:1 single unit modulation and integrated cascade controls, IE₂ offers superior performance and application flexibility. Units are PVC, polypropylene and stainless steel vent capable and can be installed in multiple unit configurations using its onboard boiler control configuration – providing flexible modulation and maximum efficiencies.

- 97% AHRI Certified*
- RVC Stainless Steel Heat Exchanger
- PVC, PP and Stainless Steel Venting
- Intuitive Integrated Control Platform
- Multi-unit Cascade Communication
- Pre-Mix Burner Technology
- Low NOx and CO Emissions
- 3" Minimum Gas Pressure
- 160 PSI Working Pressure
- Integrated Condensate Neutralizer System

*Efficiencies vary by size.



NEAR-CONDENSING BOILERS

Delivering efficiencies up to 88%, RBI's selection of near-condensing boilers and water heaters are built for use in high efficiency applications that do not require condensing equipment. Capable of full modulation with reduced footprints, all RBI near-condensing models are constructed for simple installation and maintenance.

Futera XLF

2,500–10,000 MBH | 5:1 Modulation

RBI's Futera XLF gives you the power and flexibility to fit any commercial application. Available in 2,500 to 10,000 MBH, the Futera XLF has operating efficiencies up to 88% and turndown ratios of 5:1 for maximum energy optimization. The Futera XLF provides advanced, efficient performance with unmatched outputs, all within a compact footprint.

The Futera XLF features integral HeatNet 3.0 boiler control software that can act as a boiler management system, capable of networking up to sixteen units without requiring any external boiler control panel. With such advanced performance in a small space, even older boiler systems can benefit from the addition of contemporary efficiency for existing heating or domestic hot water systems. For new construction, the Futera XLF provides a modular configuration with an output unmatched by today's market.

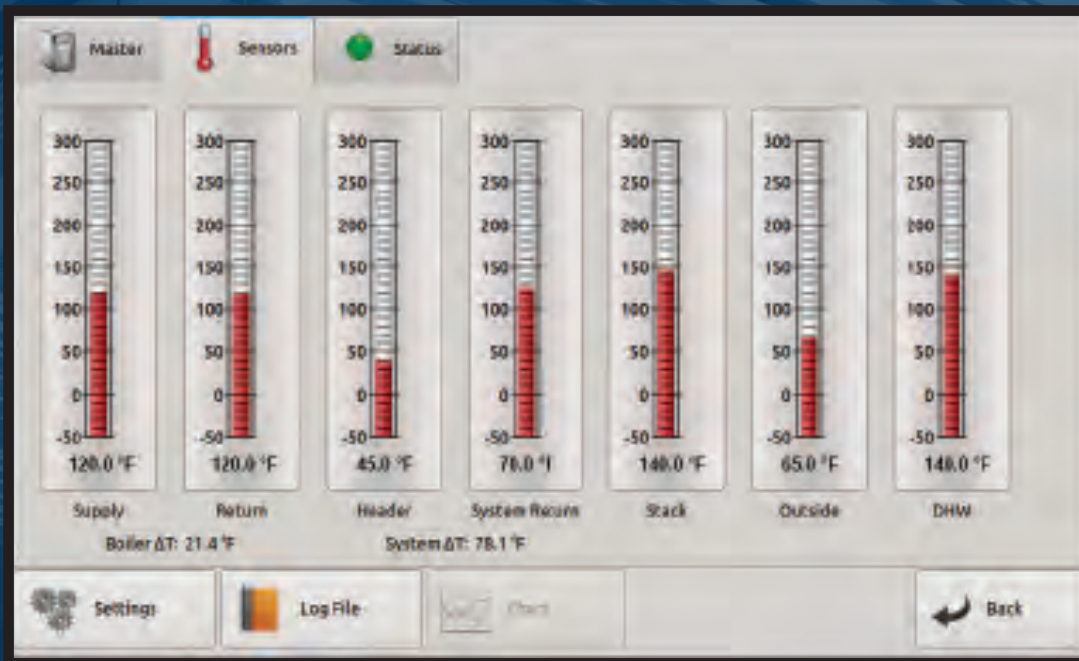
- 88% Maximum Efficiency
- Cast Iron Headers (Boilers)
- Bronze Headers (Water Heaters)
- Full Modulation with Smooth, 5:1 Turndown
- Finned Copper Tube Heat Exchanger
- HeatNet 3.0 Integrated Boiler Management System
- Full Color Touchscreen Display – Standard Sizes 6,000 – 10,000
- Turbo Pilot Sure-Fire Ignition
- Multiple Venting Options
- Category I, II and IV Venting



HeatNet® 3.0 is an innovative, digital Boiler Management System that provides consistency and feedback through digital communication. By continuously monitoring several system characteristics, HeatNet 3.0 modulates boiler-firing rates to maximize turndown ratios and maintain peak efficiency – no matter the load.

HeatNet 3.0 doesn't just benefit stand-alone compatible RBI boilers; it is a valuable and cost-saving tool in operating a multi-boiler Master/Member network of up to 16 boilers. By functioning as a boiler management system, HeatNet 3.0 can incorporate a mixture of condensing boilers and non-condensing boilers to eliminate costly third-party, wall-mounted boiler control platforms.

- Digital Touchscreen Programming
- Lead/Lag Cascade (16 units)
- Adaptive Modulation
- Circular Pump/VFD/Valve Control
- BMS Integration
- Freeze Protection & Delta T Monitoring
- Hybrid/Base Load Capability
- Priority Boiler Control
- Domestic Hot Water Communication
- Web-based Remote Monitoring/Dashboard
- Diagnostics and Troubleshooting





HEATNET ONLINE

A secure web-based remote monitoring control platform, HeatNet Online continuously monitors, records and graphs input and output trending data for quick visualization of overall boiler system performance. HeatNet Online allows users to see live system performance 24/7/365 to insure peak efficiency while preventing costly failures by allowing proactive responses to systems potentially operating in unsafe conditions. Users can see system performance including but not limited to temperature settings, system cycles and overall boiler performance.

Save Money:

Running your boiler system at peak efficiency is not only important to your organization but it is critical for the environment. By having an easy to understand remote monitoring platform you can pinpoint problems and resolve issues quickly saving time and money while preventing critical system failures resulting in decreased downtime and premium performance.

Alerts & Security:

Custom email alerts are sent to pertinent personnel including the boiler applications team at Advanced Thermal Hydraulics to aid in technical assistance when necessary.

HeatNet Online is a secure system using either a wired network or a wireless cellular network. Outbound data only is transmitted through HeatNet Online eliminating security risks. The team at Advanced Thermal Hydraulics is available for consultation regarding any security questions to insure all of your IT department's policies and procedures stay protected.

- 24/7/365 online boiler system monitoring
- Customized email notification
- Prevent boiler system failure/down time
- Increase boiler performance
- Remote access from any mobile device
- Secure outbound only data transmission
- Wired or wireless cellular network capable
- Communication with any operating system (IOS/Android/Windows)

Futera III

500–1,999 MBH | 4:1 Modulation

Futera III, a near-condensing boiler and water heater, features full modulation with 4:1 turndown while supplying the precise amount of heat necessary to maintain desired building temperature by matching heating demand without overfiring or wasting energy.

These dependable, easy-to-service boilers feature rugged construction and sleek, stainless steel jacket design. With models ranging from 500-1999 MBH, all Futera III units come equipped with HeatNet 3.0 boiler control software, ensuring the highest operating efficiencies of any domestic boiler and hydronic heating system on the market.

- 88% Maximum Efficiency
- Full Modulation with 4:1 Turndown
- Cast Iron Headers (Boilers)
- Bronze Headers (Water Heaters)
- HeatNet 3.0 Integrated Boiler Management System
- Finned Copper Tube Heat Exchanger
- Symmetrically Air/Fueled Coupled
- Gasketless Heat Exchanger Assembly
- Stainless Steel Jacket Panel
- Category I*, II and IV Venting

*Sizes 750 – 2000





Futera II

500–1,950 MBH | On/Off or 2-Stage

Futera II Series hot water supply boilers provide dependable performance with 85% efficiency levels, alongside industry-leading NOx levels of less than 10 ppm. With sizing that ranges from 500 to 1,950 MBH, the Futera II provides a high concentration of BTUs in a small footprint, making it an excellent choice for jobs where mechanical space is limited, as well as other modular, step-fired boiler applications.

The Futera II's compact, low maintenance boiler and venting flexibility allow for easy installation and service, making it the ideal unit for any hot water supply application. Futera II units have the ability to use room air for combustion and are also capable of drawing in air from the outside for sealed combustion. Units can be set up to vent vertically as Category I appliances or horizontally as Category III through a side-wall, making the Futera II ideal for buildings without chimneys, where roof penetrations cannot exist or on electric-to-gas conversions.

- Up to 85% Efficiency
- Advanced Diagnostic Panel
- Cast Iron Headers (Boilers)
- Bronze Headers (Water Heaters)
- Flame Safeguard Control
- One-Piece Header Design
- Stainless Combustion Chamber
- Vertical or Horizontal Venting Options
- 2-Stage Digital Operator
- Galvalume Metal Jacket (Indoor/Outdoor)



Dominator®

300–2,100 MBH | 2-Stage/4-Stage

With sizing from 300 to 2,100 MBH, the Dominator® offers the ultimate flexibility in boiler and water heater application, all at a competitive price. Capable of operating using mechanical room air for combustion or by drawing outside air directly, the Dominator can vent combustion gases vertically or horizontally with factory equipped draft-inducer kits.

In applications where mechanical space is limited, the Dominator's stackable frame option allows units to be stacked two-high, adding valuable BTUs while keeping the footprint to the size of a single unit. In addition, the Dominator provides up to four stages of firing, allowing the boiler to match the heating load more closely.

And with built-in serviceability features, including a slide out heat exchanger, contractors no longer need to remove the heat exchanger for service or repair, which, when coupled with high efficiencies, makes the Dominator a cost-saving option for any boiler application.

- 2 or 4-Stage Firing Modes (300 On/Off Only)
- Glass Lined Headers
- Optional Bronze Headers
- Galvalume Metal Jacket (Indoor/Outdoor)
- Finned Copper Tube Heat Exchanger – Two-Pass
- Stackable Frame (Seismic Approval up to Zone 4)
- Direct Vent (up to 35' Equivalent)
- Category I & III Venting





Spectrum

250-399 MBH | On/Off or 2-Stage

Spectrum Series boilers and hot water heaters offer some of the highest thermal efficiencies possible in a non-condensing unit. With models ranging from 250 to 399 MBH, Spectrum's unique design and Galvalume metal jacket panels make them ideal for indoor and outdoor installations in corrosive or harsh environments.

A unique feature within this MBH range, the Spectrum Series' diagnostic control panel allows for easy troubleshooting, and, when coupled with the self-diagnostic light package, makes the Spectrum Series easy to assess, maintain and service. All Spectrum Series gas-fired boilers and hot water heaters are constructed for application flexibility, and feature built-in draft diverters to lower the height of the unit and reduce installation costs.



- Glass Lined Headers
- Optional Bronze Headers
- Manual Reset High Limit 250-400
- Built-in Draft Diverter
- Stainless Steel Burners
- Inlet & Outlet Thermometers
- Mounted and Wired Flow Switch
- Vent Damper (250 MBH Boiler Only)
- Self-Diagnostic Light Package
- Pump Control
- Electronic Ignition
- Galvalume Metal Jacket (Indoor/Outdoor)



MORE INFO



LCD Dominator®

400–2300 MBH | On/Off or 2-Stage

The LCD Dominator® Series offers a budget-conscious, near-condensing, indoor/outdoor boiler and water heating unit that meets low NOx requirements, while maintaining superior performance and serviceability that RBI is known for. The LCD provides dependable performance in a wide range of rugged environments and process applications with a wide 400 to 1970 MBH range.

At the heart of the unit is a sealed combustion chamber that provides the flexibility of using outside or mechanical room air for combustion. Priced in line with other atmospheric boilers, the LCD features smaller vent sizes, resulting in lower installation and operation costs.

The LCD features a robust, compact design that is constructed with high-quality materials, which, when paired with a proven pilot ignition system and a wide variety of venting options, makes this unit one of the most dependable boilers in the commercial boiler market.

- Finned Copper Tube Heat Exchanger
- On/Off, All Sizes 2-Stage, 600–2300
- Glass Lined Headers
- Galvalume Metal Jacket (Indoor/Outdoor)
- Optional Bronze Headers
- Category I Vertical Venting
- Category III Thru-Wall Venting (up to 35') (Seismic Approval up to Zone 4)
- Slide-Out Heat Exchanger
- Stackable Frame



NON-CONDENSING BOILERS

As boiler systems go, non-condensing engineering is a tried and true design. RBI's selection of high efficiency non-condensing boilers and water heaters run the gamut when it comes to cost savings, easy boiler installation and increased energy savings. And because they're backed by RBI, you can be sure that any non-condensing boiler system you install is built tough and built to last.



COMMERCIAL HEAT PUMP

When operating in heating mode, heat pumps absorb low-temperature heat from the outside air and deliver higher temperature heat to an emitter using water as the heat transfer medium. When operating in cooling mode the heat pump reverses the cycle and delivers chilled water through the same emitter.

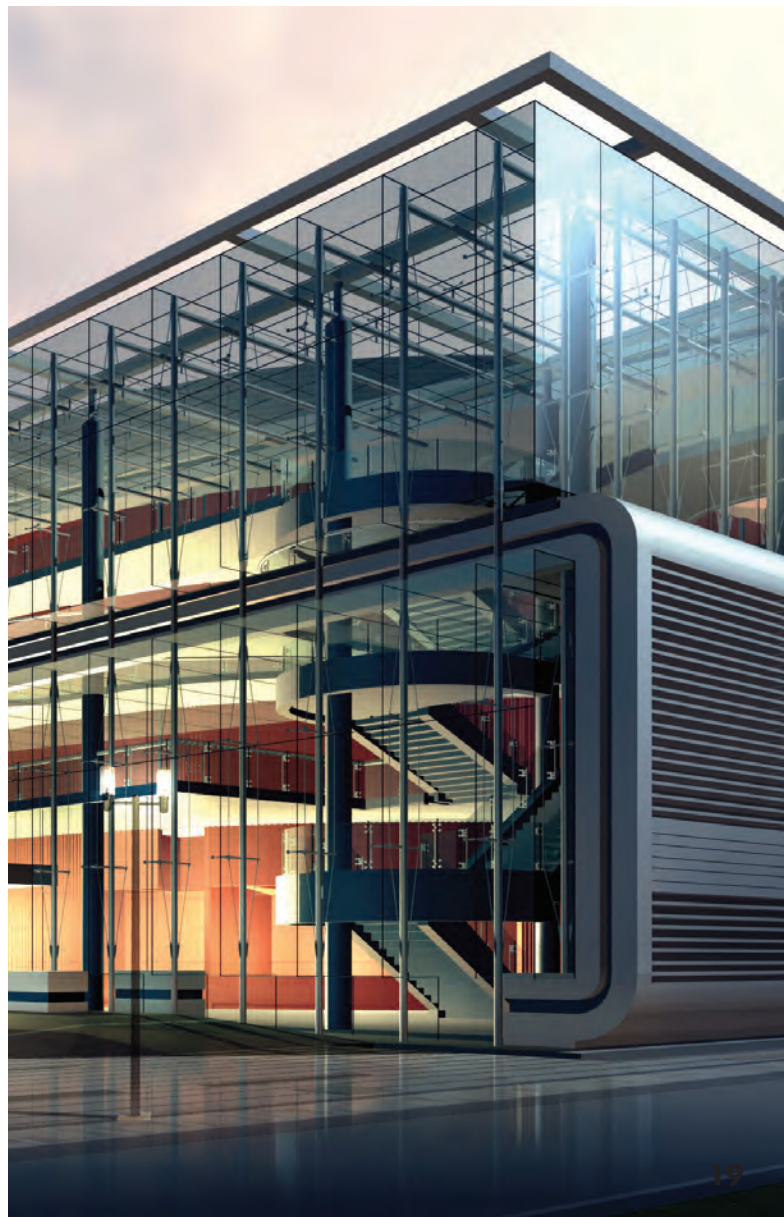
Engineers who design commercial, industrial and institutional buildings have long understood the benefits of hydronic based systems in comparison to traditional air systems. By combining the flexibility and efficiencies of hydronic systems with the advantages of modern air-to-water heat pump technologies engineers can build high efficient heating and cooling systems quite easily.

Today's emphasis on green, environmentally friendly technologies reducing the overall carbon footprint make it imperative to think outside the box when it comes to heating and cooling applications.

RBI's new commercial air-to-water heat pumps provide building owners with engineered products built to meet tomorrow's standards, today.

Features and Benefits

- Zero-Carbon Heating
- No Greenhouse Emissions
- Environmentally Friendly
- Chilled Water Cooling
- Environmentally Friendly - Green Technology
- Inverter Compressors
- Low Ambient Performance (-20°F)
- EVI Compressor Technology
- Delivered Hot Water to 140°F
- User Friendly Touch Screen Control Platform
- No Refrigerant Handling
- Easily Piped & Zoned
- Built-in Redundancy
- BMS Compatible through Modbus



COMMERCIAL HEAT PUMP

Specifications

		Units	HP0275
Cooling	Capacity Range	BTU/hr (kW)	74,003-353,225 (22-104)
	Efficiency Range	EER	7.88-18.68
	Efficiency	IPLV	17.1
	Delivered Water Temp Range	°F (°C)	41-86 (5-30)
	Ambient Temp Range	°F (°C)	5-131 (-15-55)
Heating	Capacity Range	BTU/hr (kW)	52,543-541,382 (16-159)
	Efficiency Range	COP	1.46-7.64
	Delivered Water Temp Range	°F (°C)	59-140 (15-60)
	Ambient Temp Range	°F (°C)	-22-109.4 (-30-43)
CEC Data	Cooling Capacity*	BTU/hr (kW)	226,586 (67)
	Cooling Efficiency*	EER	8.95
	Heating Capacity**	BTU/hr (kW)	274,965 (81)
	Heating Efficiency**	COP	2.43
	Heating Capacity***	BTU/hr (kW)	187,254 (55)
	Heating Efficiency***	COP	1.82
Electrical	Power	V/Ph/Hz	460/3/60
	Fan Motor	A	4.0×2
	Compressor Motor	A	23.0×2
	MCA	A	60
	MOPD	A	70
	SCCR	kA	10
	Refrigerant	Type	
Factory Charge		lbs. (kg)	19.84 × 2 (9.0 x 2)
Fan	Quantity		2
	Power Input	W	550
	Type		DC
	Max Speed	RPM	800
Sound (@3meters)	Range	dBA	54-67
Hydronic	Rated Flow	GPM	52.83
	Max Water Temp	°F (°C)	140 (60)
	Piping Connections	inch (cm)	2.5 (6.35)
	Rated Pressure Drop	PSI (ft W.C.)	10.15 (23.3)
Compressor	Type		INVERTER SCROLL, EVI
	Speed Range	Hz	30-120
	Brand		Hitachi
	Quantity		2
Dimensions	Net Dimensions (L x W x H)	inch (cm)	86 × 45 × 84 (217 x 115 x 213)
	Shipping Dimensions (L x W x H)	inch (cm)	87 × 52 × 88 (220 x 133 x 224)
	Net Weight	lbs. (kg)	1616 (733)
	Shipping Weight	lbs. (kg)	1709 (775)

CEC is California Energy Commission. Data is tested in accordance with AHRI 550/590

*= 44°F LWT 54°F EWT @45 GPM & 95°F DB Ambient

**= 120°F LWT 107°F EWT @45 GPM & 47°F DB Ambient

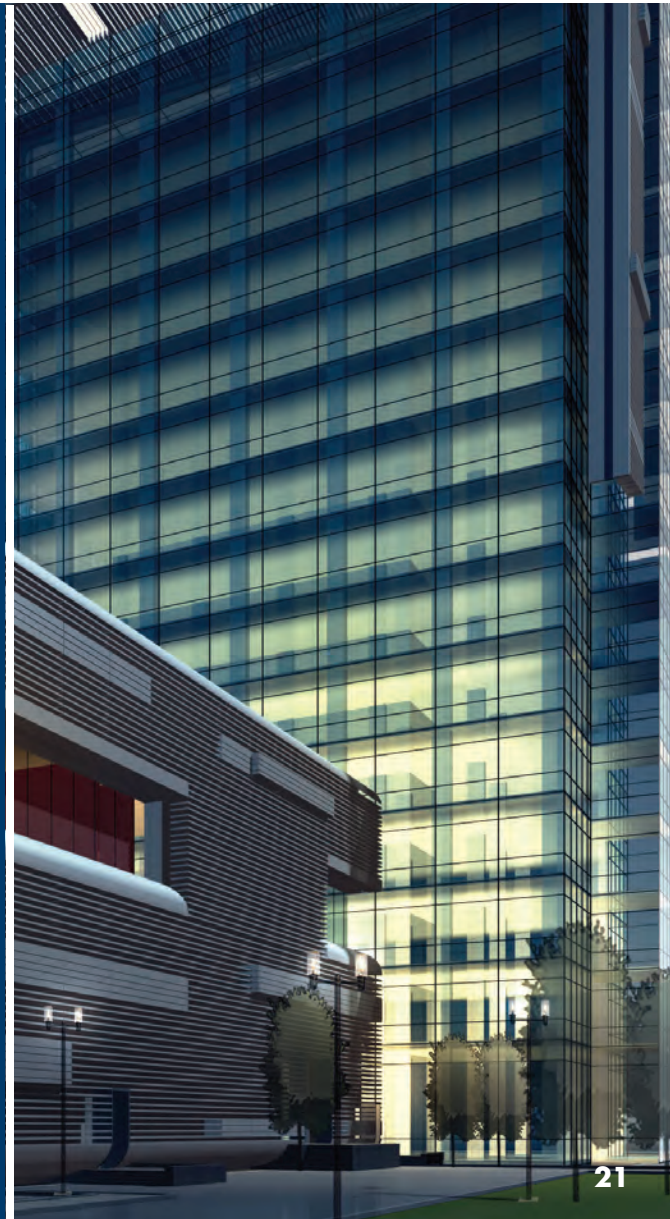
***= 120°F LWT 110°F EWT @45 GPM & 17°F DB Ambient

STORAGE TANKS

RBI storage tanks are designed to provide large volume, continuous or intermittent hot water supply while maintaining a constant outlet temperature. Ranging in size from standard 200 to 1,000 gallon capacities to custom-built 3,000-gallon units, RBI hot water storage tanks offer complete application flexibility and are the perfect complement to RBI's high efficiency boilers and water heaters.

Available in both jacket/insulated and bare configurations, all RBI hot water storage tanks are ASME certified and use the latest advancements in interior tank lining technology for maximum performance and durability. RBI's signature glass lining is specifically formulated for hot water applications and provides an ultra-durable, wear-resistant lining that minimizes the effects of high temperatures associated with water heating.

- ASME Certified HLW Stamp
- 2" True Dielectric NPT Fittings
- 125 PSI Certified Working Pressure
- Magnesium Anode Rods
- Heavy Gauge Steel Construction
- 2" Non-CFC Foam Insulation
- Durable Heavy Gauge Steel Jacket
- 5-Year/10-Year Warranty (Double Glass Lining Only)



DIMENSIONS AND RATINGS

Models

RB = Boiler

Encore — Dimensions and Ratings*																				
Size	Input		Boiler Output		Unit Depth		Unit Width		Unit Height		Flue Vent**				Air Intake	Connections			Shipping Weight	
	MBH	kW	MBH	kW	In.	mm	In.	mm	In.	mm	Cat IV Positive			Cat II		Gas			Lbs	Kg
											UL Listed Stainless Steel	PVC Option	PP Option	Negative		Nat	LP	Water		
350	349	102	342	100	39.38	1000	26.97	685	66.09	1679	4	4	4	6	5	1	3/4	2	612	278
400	399	117	392	115	39.38	1000	26.97	685	66.09	1679	4	4	4	6	5	1	3/4	2	612	278
500	500	147	490	144	39.38	1000	26.97	685	66.09	1679	4	4	4	6	5	1	3/4	2	642	291
600	600	176	587	172	39.38	1000	26.97	685	66.09	1679	4	4	4	6	5	1-1/4	3/4	2	642	291
725	725	212	708	207	39.31	998	27.94	710	66.09	1679	6	6	6	8	5	1-1/4	3/4	2-1/2	700	318
850	850	249	824	241	39.31	998	27.94	710	66.09	1679	6	6	6	8	5	1-1/4	3/4	2-1/2	725	329

* AHRI Certified Performance Ratings can be found at www.ahridirectory.org

** Diameters may vary based on system design.

Models

WB = Boiler

WW = Water Heater

Torus — Dimensions and Ratings*																				
Size	Input		Boiler Output		Unit Depth		Unit Width		Unit Height		Flue Vent**				Air Intake	Connections			Shipping Weight	
	MBH	kW	MBH	kW	In.	mm	In.	mm	In.	mm	Cat IV Positive			Cat II		Gas			Lbs	Kg
											UL Listed Stainless Steel	PVC Option	PP Option	Negative		Nat	LP	Water		
300	300	88	291	85	40-1/4	1022	25-1/16	637	40-15/16	1040	4"	4"	4"	6"	5"	1"	3/4"	2"	519	235
350	349	102	337	99	40-1/4	1022	25-1/16	637	40-15/16	1040	4"	4"	4"	6"	5"	1"	3/4"	2"	519	235
400	399	117	385	113	40-1/4	1022	25-1/16	637	40-15/16	1040	4"	4"	4"	6"	5"	1"	3/4"	2"	519	235
500	500	147	482	141	41-3/4	1060	25-1/16	637	40-15/16	1040	4"	4"	4"	6"	5"	1"	3/4"	2"	537	244
650	650	176	626	183	49-1/4	1251	25-1/16	637	40-15/16	1040	6"	6"	6"	8"	5"	1-1/4"	3/4"	2"	598	271
800	800	234	769	225	52-1/8	1324	25-1/16	637	40-15/16	1040	6"	6"	6"	8"	5"	1-1/4"	3/4"	2"	635	288
1000	999	293	959	281	56-7/8	1445	25-3/8	644	41-5/8	1059	6"	6"	6"	8"	5"	1-1/4"	3/4"	2-1/2"	746	338
1250	1250	366	1206	353	63-3/8	1609	32-9/16	824	63-5/16	1608	6/8"	6/8"	6/8"	10"	8"	1-1/2"	1"	2-1/2"	1112	491
1500	1500	440	1447	424	68	1728	32-9/16	824	63-5/16	1608	6/8"	6/8"	6/8"	10"	8"	1-1/2"	1"	2-1/2"	1220	522
2000	1999	586	1929	565	76	1931	32-9/16	824	63-3/8	1609	8"	6/8"	8"	10"	8"	1-1/2"	1"	2-1/2"	1406	638
2500	2500	733	2437	713	87-7/32	2215	44-1/16	1119	77-27/32	1977	10"	N/A	10"	12"	10"	1-1/2"	1-1/2"	4"	2460	1116
3000	3000	879	2925	857	87-7/32	2215	44-1/16	1119	77-27/32	1977	10"	N/A	10"	12"	10"	1-1/2"	1-1/2"	4"	2460	1116
4000	4000	1172	3900	1143	96	2438	44-1/16	1119	77-27/32	1977	12"	N/A	12"	14"	12"	2"	1-1/2"	4"	2983	1353

* AHRI Certified Performance Ratings can be found at www.ahridirectory.org

** Diameters may vary based on system design.



Models
CK = Boiler

FlexCore — Dimensions and Ratings*																	
Size	Input		Boiler Output		Unit Depth		Unit Width		Unit Height		Flue Vent		Air Intake	Connections		Shipping Weight	
	MBH	kW	MBH	kW	In.	mm	In.	mm	In.	mm	Cat IV Positive	Cat II		Nat	Water	Lbs	Kg
											UL Listed Stainless Steel**	Negative**					
850	850	249	812	238	70	1778	32	812.8	80	2031.9	5"	8"	6"	1"	3"	1515	687
1000	1000	293	955	280	70	1778	32	812.8	80	2031.9	5"	8"	6"	1"	3"	1515	687
1500	1500	440	1426	418	70	1778	32	812.8	80	2031.9	6"	8"	8"	1-1/2"	3"	1555	705
2000	1999	586	1901	557	72.4	1838.3	32	812.8	80	2031.9	6"	10"	8"	1-1/2"	3"	1880	853
2500	2500	733	2397	703	72.4	1838.3	32	812.8	80	2031.9	8"	12"	8"	1-1/2"	3"	1955	887
3000	3000	879	2904	851	72.4	1838.3	32	812.8	80	2031.9	8"	12"	8"	1-1/2"	3"	2055	932
3500	3499	1025	3327	975	109.4	2770.7	34	863.6	80	2031.9	10"	12"	10"	2-1/2"	4"	3420	1551
4000	3998	1172	3802	1114	109.4	2770.7	34	863.6	80	2031.9	10"	12"	10"	2-1/2"	4"	3745	1699
4500	4500	1319	4329	1269	109.4	2770.7	34	863.6	80	2031.9	10"	14"	10"	2-1/2"	4"	3600	1633
5000	5000	1465	4795	1405	109.4	2770.7	34	863.6	80	2031.9	12"	14"	12"	2-1/2"	4"	3920	1778
6000	6000	1758	5808	1702	109.4	2770.7	34	863.6	80	2031.9	12"	14"	12"	2-1/2"	4"	4150	1882

* AHRI Certified Performance Ratings can be found at www.ahridirectory.org

** Diameters may vary based on system design.

Models
CB = Boiler
CW = Water Heater

Futura Fusion XLF — Dimensions and Ratings*																			
Size	Input		Boiler Output		Unit Depth		Unit Width		Unit Height		Flue Vent		Air Intake	Connections			Shipping Weight		
	MBH	kW	MBH	kW	In.	mm	In.	mm	In.	mm	Cat IV Positive	Cat II		Nat	LP	Water	Lbs	Kg	
											UL Listed Stainless Steel**	PVC/PP Option							Negative**
2500	2500	733	2350	689	84	2134	29-1/8	740	55-1/2	1410	8"	8"	12"	8"	1-1/2"	1-1/2"	3"	2330	1057
3000	3000	879	2820	826	84	2134	29-1/8	740	60	1524	8"	8"	12"	8"	1-1/2"	1-1/2"	3"	2384	1081
3500	3500	1026	3290	964	84	2134	29-1/8	740	64-1/2	1638	10"	10"	14"	10"	2"	1-1/2"	3"	2614	1186
4000	4000	1172	3760	1102	84	2134	29-1/8	740	69	1753	10"	10"	14"	10"	2"	1-1/2"	3"	2726	1236

* AHRI Certified Performance Ratings can be found at www.ahridirectory.org

** Diameters may vary based on system design.

DIMENSIONS AND RATINGS

Models

CB = Boiler

CW = Water Heater

Futera Fusion — Dimensions and Ratings*																		
Size	Input		Boiler Output		Unit Depth		Unit Width		Unit Height		Flue Vent			Air Intake	Connections		Shipping Weight	
											Cat IV Positive		Cat II		Gas	Water	Lbs	Kg
	MBH	kW	MBH	kW	In.	mm	In.	mm	In.	mm	UL Listed Stainless Steel**	PVC/PP Option	Negative**					
500	500	147	476	139	59	1499	26-1/8	664	48-1/2	1232	7"	8"	7"	8"	1"	2"	875	397
750	750	220	713	209	59	1499	26-1/8	664	55	1397	7"	8"	7"	8"	1"	2"	900	408
1000	1000	293	952	279	59	1499	26-1/8	664	61-1/2	1562	7"	8"	8"	8"	1"	2"	1000	454
1250	1250	366	1190	349	66-1/2	1689	31-1/8	791	55-1/2	1410	8"	8"	8"	10"	1"	2-1/2"	1257	570
1500	1500	440	1430	419	66-1/2	1689	31-1/8	791	60	1524	8"	8"	8"	10"	1-1/4"	2-1/2"	1350	612
1750	1750	513	1668	489	66-1/2	1689	31-1/8	791	64-1/2	1638	10"	10"	10"	12"	1-1/2"	2-1/2"	1440	653
2000	1999	586	1906	558	66-1/2	1689	31-1/8	791	69	1753	10"	10"	10"	12"	1-1/2"	2-1/2"	1500	680

* AHRI Certified Performance Ratings can be found at www.ahridirectory.org

** Diameters may vary based on system design.

Models

IB = Boiler

IW = Water Heater

Infinite Energy 2 Series – Dimensions and Ratings*																
Size	Input		Boiler Output		Unit Height		Unit Width		Unit Depth		Flue Vent	Air Intake	Connections		Shipping Weight	
	MBH	kW	MBH	kW	In	mm	In	mm	In	mm			Gas	Water	Lbs	Kg
199 ⁽¹⁾	200	59	184	54	45.7	1154	23.6	600	34.8	885	3"	3"	1"	2"	258	117
399	399	117	376	110	45.7	1154	23.6	600	34.8	885	4"	4"	1"	2"	356	162
500	500	147	472	138	45.7	1154	23.6	600	34.8	885	4"	4"	1"	2"	371	168
750	750	220	711	208	71.4	1815	23.6	600	35.3	896	6"	6"	1-1/4"	2-1/2"	539	245
1000	1000	293	952	279	71.4	1815	23.6	600	35.3	896	6"	6"	1-1/4"	2-1/2"	612	278

* AHRI Certified Performance Ratings can be found at www.ahridirectory.org

⁽¹⁾ Size 199 water heater not available for sale in the US market due to DOE regulations.

Models

MB = Boiler

MW = Water Heater

Futera XLF Series — Dimensions and Ratings*																		
Size	Input		Boiler Output		Unit Depth		Unit Width		Unit Height		Flue Vent ⁽¹⁾			Connections			Shipping Weight	
											Cat I Negative	Cat II Negative	Cat IV Positive	Gas		Water	lbs.	kgs.
	Nat	LP																
2500	2500	733	2148	629	31-1/8	791	29-1/8	740	55-1/2	1410	10"	12"	8"	1-1/2"	1-1/2"	4"	1300	590
3000	3000	879	2622	768	31-1/8	791	29-1/8	740	60	1524	10"	12"	8"	1-1/2"	1-1/2"	4"	1400	635
3500	3500	1026	3052	894	31-1/8	791	29-1/8	740	64-1/2	1638	12"	14"	10"	2"	1-1/2"	4"	1510	685
4000	4000	1172	3480	1020	31-1/8	791	29-1/8	740	69	1753	12"	14"	10"	2"	1-1/2"	4"	1570	712
5000	5000	1465	4255	1247	31-1/8	791	29-1/8	740	78	1981	14"	14"	12"	2"	1-1/2"	4"	2000	908

* AHRI Certified Performance Ratings can be found at www.ahridirectory.org

⁽¹⁾ Diameters may vary based on system design.



Models

MB = Boiler

NOTE: These sizes are only available as MB.

Futera XLF Series Boilers — Dimensions and Ratings*																	
Size	Input		Boiler Output		Unit Depth		Unit Width		Unit Height		Flue Vent			Connections		Shipping Weight	
	MBH	kW	MBH	kW	In.	mm	In.	mm	In.	mm	Cat I Negative	Cat II Negative	Cat IV Positive	Gas	Water	lbs.	kgs.
6000	6000	1758	5244	1537	31-1/16	789	55-1/3	1406	59-15/16	1522	12"	12"	12"	2-1/2"	4"	2726	1238
8000	8000	2345	6824	2000	31-1/16	789	55-1/3	1406	68-15/16	1751	14"	14"	14"	3"	6"	3176	1442
10000	10000	2931	8510	2494	31-1/16	789	55-1/3	1406	77-15/16	1979	16"	16"	16"	3"	6"	3450	1566

* AHRI Certified Performance Ratings can be found at www.ahridirectory.org

Models

MB = Boiler

MW = Water Heater

Futera III Series — Dimensions and Ratings*																		
Size	Input		Boiler Output		Unit Depth		Unit Width		Unit Height		Flue Vent ⁽¹⁾			Air Intake In.	Connections		Shipping Weight	
	MBH	kW	MBH	kW	In.	mm	In.	mm	In.	mm	(Cat I) Negative	(Cat II) Negative	(Cat IV) Positive		Gas In.	Water In.	lbs.	kgs.
500	500	147	428	125	39	991	25-1/8	638	48-1/2	1231	N/A	6"	5"	8	1	2	600	272
750	750	220	641	188	39	991	25-1/8	638	55	1397	8"	6"	5"	8	1	2	695	315
1000	1000	293	853	250	39	991	25-1/8	638	61-1/2	1562	9"	7"	6"	8	1	2	735	333
1250	1250	366	1066	312	44	1118	29-1/8	740	55-1/2	1409	10"	8"	6"	10	1	2-1/2	850	386
1500	1500	440	1278	374	46-13/16	1189	29-1/8	740	60	1524	10"	8"	8"	10	1-1/4	2-1/2	927	421
1750	1750	513	1491	437	47-3/16	1199	29-1/8	740	64-1/2	1638	12"	10"	10"	12	1-1/2	2-1/2	928	421
2000	2000	586	1704	499	47-3/16	1199	29-1/8	740	69	1752	12"	10"	10"	12	1-1/2	2-1/2	1100	499

* AHRI Certified Performance Ratings can be found at www.ahridirectory.org

⁽¹⁾ Diameters may vary based on system design.

Water Heaters not available for sale in Canada due to NRCAN regulations.

Models

FB = Boiler

FW = Water Heater

Futera II Series — Ratings*																					
Size	Input		Boiler Output		Unit Depth		Unit Width		Unit Height		Vent Dia. Standard		Vent Dia. Thru-Wall		Air Intake Dia.		Connections			Shipping Weight	
	MBH	kW	MBH	kW	In.	mm	In.	mm	In.	mm	In.	mm	In.	mm	In.	mm	Nat.	LP	Water	lbs.	kgs.
500	500	147	425	125	22-5/16	567	21-9/32	540	43-1/32	1093	8	203	6	152	10	254	1"	1"	2"	535	243
750	750	220	638	187	22-5/16	567	21-9/32	540	49-17/32	1258	10	254	8	203	10	254	1"	1"	2"	578	262
1000	1000	293	850	249	22-5/16	567	21-9/32	540	56-1/32	1423	10	254	9	229	10	254	1-1/4"	1-1/4"	2"	690	313
1250	1250	366	1062	311	27-9/32	693	25-3/16	640	50-11/16	1287	12	305	10	254	12	305	1-1/4"	1-1/4"	2-1/2"	775	352
1500	1500	440	1275	374	27-9/32	693	25-3/16	640	55-3/16	1402	12	305	10	254	12	305	1-1/4"	1-1/4"	2-1/2"	835	379
1750	1750	513	1488	436	27-9/32	693	25-3/16	640	59-11/16	1516	14	356	12	305	14	356	1-1/2"	1-1/2"	2-1/2"	900	408
1950	1950	571	1658	486	27-9/32	693	25-3/16	640	64-3/16	1631	14	356	12	305	14	356	1-1/2"	1-1/2"	2-1/2"	960	435

* AHRI Certified Performance Ratings can be found at www.ahridirectory.org

Water Heaters not available for sale in Canada due to NRCAN regulations.

DIMENSIONS AND RATINGS

Models

DB = Boiler

DW = Water Heater

Dominator Series — Dimensions and Ratings*												
Size	Input		Boiler Output		Overall Length		Flue Vent Dim.		Ducted Air Dim.		Shipping Weight	
	MBH	kW	MBH	kW	In.	mm	In.	mm	In.	mm	lbs.	kgs.
300	300	88	252	74	22-1/8	562	6	152	6	152	512	232
400 ⁽¹⁾	399	117	335	98	28-5/8	727	6	152	6	152	585	265
600	600	176	504	148	35-1/8	892	7	178	8	203	625	284
750	750	220	630	185	41-5/8	1057	8	203	8	203	710	322
900	900	264	756	222	48-1/8	1222	10	254	10	254	800	363
1050	1050	308	882	258	58-3/8	1483	10	254	10	254	915	415
1350	1350	396	1134	332	71-3/8	1813	12	305	12	305	975	442
1500	1500	440	1260	369	77-7/8	1978	14**	356	12	305	1015	460
1950	1950	572	1638	480	97-3/8	2473	14**	356	12	305	1285	583
2100	2100	616	1764	517	103-7/8	2638	14**	356	12	305	1300	590

* AHRI Certified Performance Ratings can be found at www.ahridirectory.org

** 14" oval to round transition piece.

⁽¹⁾ Model 400 water heater not available for sale in the U.S. market due to DOE regulations.

Water Heaters not available for sale in Canada due to NRCAN regulations.

Models

LB = Boiler

LW = Water Heater

LCD Dominator Series — Dimensions and Ratings*															
Size	Input		Boiler Output		Overall Length		Flue Vent Dim.		Connections			Ducted Air Dim.		Shipping Weight	
									Gas		Water				
	MBH	kW	MBH	kW	In.	mm	In.	mm	Nat.	LP		In.	mm	lbs.	kgs.
400 ⁽¹⁾	399	117	335	98	28-5/8	727	6	152	3/4"	3/4"	1-1/2"	6	152	515	234
600	600	176	504	148	35-1/8	892	7	178	1"	1"	2-1/2"	8	203	635	288
750	750	220	630	184	41-5/8	1057	8	203	1"	1"	2-1/2"	8	203	710	322
1050	1050	308	882	258	58-3/8	1483	10	254	1-1/4"	1-1/4"	2-1/2"	10	254	915	415
1200	1200	352	1008	295	71-3/8	1813	12	305	1-1/4"	1-1/4"	2-1/2"	12	305	972	441
1480	1480	434	1243	364	71-3/8	1813	12	305	1-1/2"	1-1/2"	2-1/2"	12	305	1000	454
1650	1650	483	1386	406	77-7/8	1978	14**	356**	1-1/2"	1-1/2"	2-1/2"	12	305	1075	488
1970	1970	577	1655	485	97-3/8	2473	14**	356**	1-1/2"	1-1/2"	2-1/2"	12	305	1270	577
2300	2300	674	1886	553	103-7/8	2638	14**	356**	2"	2"	2-1/2"	12	305	1280	581

* AHRI Certified Performance Ratings can be found at www.ahridirectory.org

** 14" oval to round transition piece.

⁽¹⁾ Model 400 water heater not available for sale in the U.S. market due to DOE regulations.

Water Heaters not available for sale in Canada due to NRCAN regulations.



Models

SB = Boiler

SW = Water Heater

Spectrum Series — Dimensions and Ratings*													
Size	Input		Boiler Output		AFUE%	Unit Width		Vent Width		Connections		Shipping Weight	
	MBH	kW	MBH	kW		In.	mm	In.	mm	Gas	Water	lbs.	kgs.
250	250	73	205	60	82	26-1/4	667	8	203	3/4"	1-1/2"	250	113
300	301	88	247	72	82	29-5/8	752	8	203	3/4"	1-1/2"	265	120
350	350	103	286	84	82	33	838	9	229	3/4"	1-1/2"	285	129
400	399	117	324	95	81	36-3/8	924	10	254	3/4"	1-1/2"	300	136

* AHRI Certified Performance Ratings can be found at www.ahridirectory.org

Water Heaters not available for sale in Canada due to NRCan regulations.

Size 250 boiler not available for sale in Canada-US due to NRCan and DOE regulations.

Storage Tanks — Bare — Vertical Glass Lined			
Model	Capacity (Gals.)	Height	Width
V200B	200	79-1/2"	28"
V240B	240	89"	30"
V310B	310	82"	36"
V435B	435	85"	42"
V505B	505	97"	42"
V675B	675	100"	48"
V860B	860	124"	48"

Storage Tanks — Jacketed — Vertical Glass Lined			
Model	Capacity (Gals.)	Height	Width
V200J	200	78"	32"
V240J	240	93"	34"
V310J	310	86"	40"
V435J	435	89"	46"
V505J	505	101"	46"
V675J	675	104"	52"
V860J	860	128"	52"



**260 North Elm St.
Westfield, MA 01085
TEL: 833-265-5371**

**7555 Tranmere Drive
Mississauga, Ontario
Canada L5S 1L4
TEL: (905) 670-5888**

www.rbiwaterheaters.com

