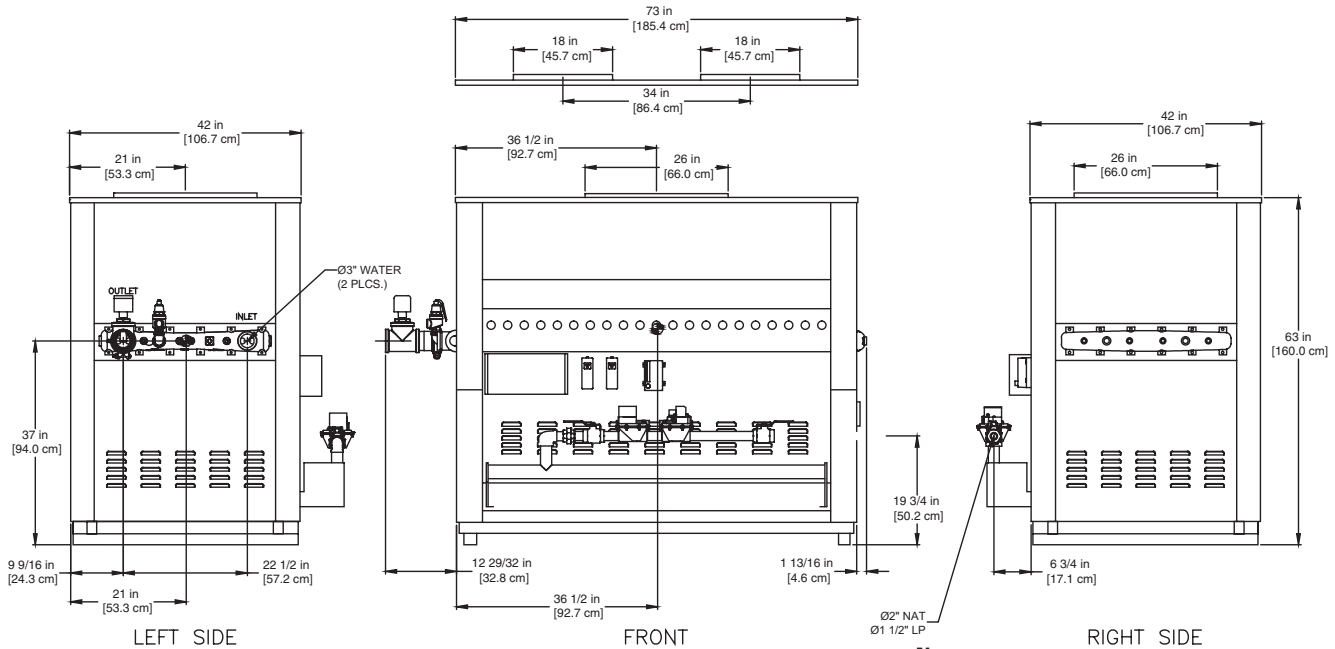


CODE OPTIONS

CSD-1	UTC 1003-616A Ignition Control UTC Lockout/Reset Control Manual Reset LWCO
FM	RM7890A Flame Safeguard (2) Motorized Valves (One w/POC) Normally Open Vent Valve Manual Reset LWCO
IRI	IRI requirements as listed in IM.4.1.1 (two motorized safety valves with N.O.V.V. no longer applies to listed atmospheric gas boilers). The addition of CSD-1 option satisfies IRI requirement for the 8800 Series.



Notes:

1. Dimensions are approximate and should not be used to "rough-in" equipment.
2. Dimensions are subject to change without notice.

BOILER CERTIFIED RATINGS & CAPACITIES

Fuel Type	Natural/Propane Gas	Boiler FLA	1*
Input BTU/hr.	2,800,000 / 820 kW	Min. Gas Pressure Required	6" WC**
Output BTU/hr.	2,296,000 / 673 kW	Max. Gas Pressure Allowed	14" WC
Electrical Requirements	120VAC / 1 ph / 60 hz	Operating Weight	1394 lbs. / 633 kg.

BOILER TEMPERATURE RISE / PRESSURE DROP

25°F / 13.9°C				30°F / 16.7°C				35°F / 19.4°C			
Flow Rate		Pressure Drop		Flow Rate		Pressure Drop		Flow Rate		Pressure Drop	
GPM	L/s	Ft	kPa	GPM	L/s	Ft	kPa	GPM	L/s	Ft	kPa
183.7	11.6	6.9	20.3	153.1	9.7	4.9	14.5	131.2	8.3	3.7	10.9

BOILER / WATER HEATER TRIM & CONTROLS

Main Gas Valve	Honeywell V8944B 2"	High Limit (HB/HW)	Honeywell L4008E
Firing Valve	Honeywell B200T1066 2"	Ignition Control	Honeywell S8610M
Safety Valve	Honeywell (2) V88A 2"	Pilot Regulator	White-Rodgers 25M
Operating Control (HB)	Honeywell L4008A - On/Off	Relief Valve - HW	3/4" x 3/4" set @125 psi
Operating Control (HW)	Honeywell L6008A - On/Off	Relief Valve - HB	1-1/4" x 1-1/2" set @ 50 psi
Operating Control (HB/HW)	Honeywell L6008G - 2 Stg.	Flow Switch	TACO
Operating Control (HB/HW)	Tekmar BTC- 4PA- 4 Stg.		

WATER HEATER HOURLY RECOVERY CAPACITY (GPH & LPH)

40°F	22°C	60°F	33°C	80°F	44°C	100°F	56°C	120°F	67°C	140°F	78°C
6891	26084	4594	17390	3445	13042	2756	10434	2297	8695	1969	7453

A.S.M.E.

ASME Sect IV Htg Surface	232.12 Sq. Ft. / 21.56 Sq. M.	Design Data	Max. 160 psig & 250 °F
Water Volume	4.4 gal / 16.7 Liters		

* Add circulator amps.

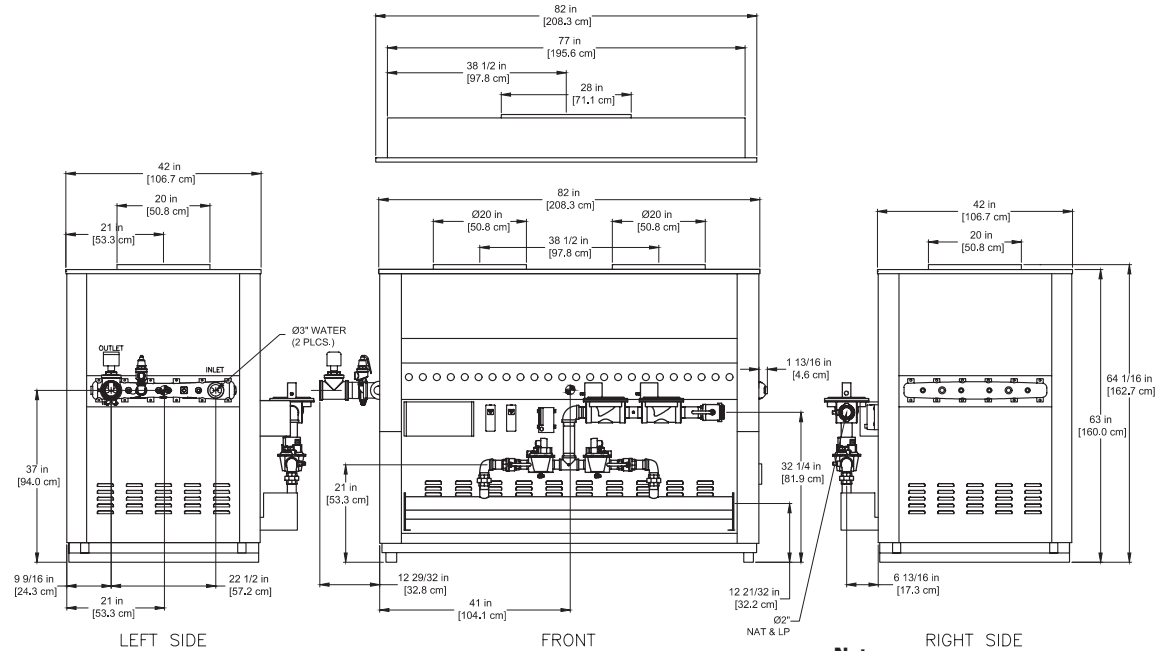
** For incoming gas pressures lower than 6" WC natural or 11" WC propane, consult factory.

REP FIRM	_____	<h1 style="margin: 0;">8800 2800</h1> <p style="margin: 0;">Category I Appliance Must be vented into a negative pressure vent system.</p> <p style="margin: 0; font-size: small;">A Division of Mestek, Inc. Westfield, MA 01085 (413) 568-9571</p>
SUBMITTED BY	_____	
JOB NAME	_____	
ARCHITECT	_____	
ENGINEER	_____	
CONTRACTOR	_____	
DATE	_____	

**8800 water heaters are not available for sale in the US and Ontario, Canada markets due to DOE regulations.
8800 boilers are not available for sale in Ontario, Canada.**

CODE OPTIONS

CSD-1	UTC 1003-616A Ignition Control UTC Lockout/Reset Control Manual Reset LWCO
FM	RM7890A Flame Safeguard (2) Motorized Valves (One w/POC) Normally Open Vent Valve Manual Reset LWCO
IRI	IRI requirements as listed in IM.4.1.1 (two motorized safety valves with N.O.V.V. no longer applies to listed atmospheric gas boilers). The addition of CSD-1 option satisfies IRI requirement for the 8800 Series.



Notes:

1. Dimensions are approximate and should not be used to "rough-in" equipment.
2. Dimensions are subject to change without notice.

BOILER CERTIFIED RATINGS & CAPACITIES

Fuel Type	Natural/Propane Gas	Boiler FLA	1*
Input BTU/hr.	3,200,000 / 938 kW	Min. Gas Pressure Required	6" WC**
Output BTU/hr.	2,624,000 / 769 kW	Max. Gas Pressure Allowed	14" WC
Electrical Requirements	120VAC / 1 ph / 60 hz	Operating Weight	1527 lbs. / 693 kg.

BOILER TEMPERATURE RISE / PRESSURE DROP

30°F / 16.7°C				35°F / 19.4°C			
Flow Rate		Pressure Drop		Flow Rate		Pressure Drop	
GPM	L/s	Ft	kPa	GPM	L/s	Ft	kPa
174.9	11.0	7.2	21.1	149.9	9.5	5.4	15.8

BOILER / WATER HEATER TRIM & CONTROLS

Main Gas Valve	Honeywell (2) V8944B 1-1/4"	High Limit (HB/HW)	Honeywell L4008E
Firing Valve	Honeywell (2) B200T1041 1-1/4"	Ignition Control	Honeywell S8610M
Safety Valve	Honeywell (2) V88A 2"	Pilot Regulator	White-Rodgers 25M
Operating Control (HB)	Honeywell L4008A - On/Off	Relief Valve - HW	3/4" x 3/4" set @125 psi
Operating Control (HW)	Honeywell L6008A - On/Off	Relief Valve - HB	1-1/4" x 1-1/2" set @ 50 psi
Operating Control (HB/HW)	Honeywell L6008G - 2 Stg.	Flow Switch	TACO
Operating Control (HB/HW)	Tekmar BTC- 4PA- 4 Stg.		

WATER HEATER HOURLY RECOVERY CAPACITY (GPH & LPH)

40°F	22°C	60°F	33°C	80°F	44°C	100°F	56°C	120°F	67°C	140°F	78°C
7875	29811	5250	19874	3938	14905	3150	11924	2625	9937	2250	8517

A.S.M.E.

ASME Sect IV Htg Surface	263.41 Sq. Ft. / 24.47 Sq. M.	Design Data	Max. 160 psig & 250 °F
Water Volume	4.8 gal / 18.2 Liters		

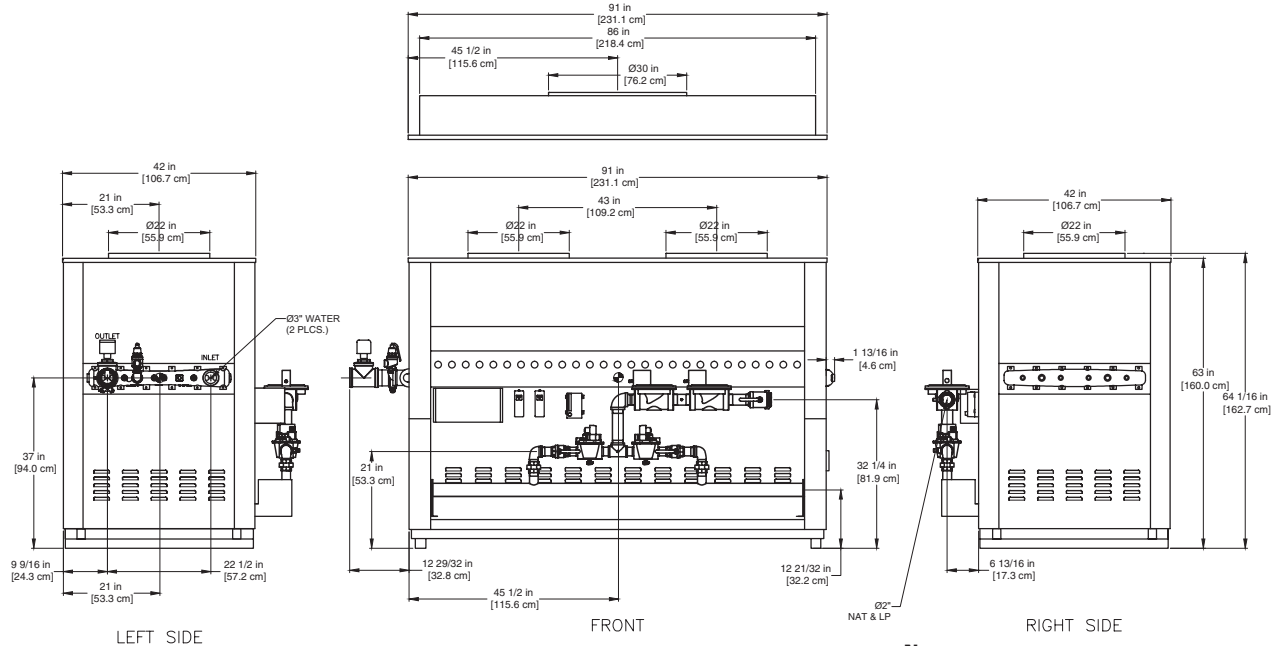
* Add circulator amps.
** For incoming gas pressures lower than 6" WC natural or 11" WC propane, consult factory.

REP FIRM	_____	<h1 style="margin: 0;">8800 3200</h1> <p style="margin: 0;">Category I Appliance Must be vented into a negative pressure vent system.</p> <p style="margin: 0;">RBI® A Division of Mestek, Inc. Westfield, MA 01085 (413) 568-9571</p> <p style="margin: 0; font-size: small;">RELIABLE. BOLD. INNOVATIVE.</p>
SUBMITTED BY	_____	
JOB NAME	_____	
ARCHITECT	_____	
ENGINEER	_____	
CONTRACTOR	_____	
DATE	_____	

**8800 water heaters are not available for sale in the US and Ontario, Canada markets due to DOE regulations.
8800 boilers are not available for sale in Ontario, Canada.**

CODE OPTIONS

CSD-1	UTC 1003-616A Ignition Control UTC Lockout/Reset Control Manual Reset LWCO
FM	RM7890A Flame Safeguard (2) Motorized Valves (One w/POC) Normally Open Vent Valve Manual Reset LWCO
IRI	IRI requirements as listed in IM.4.1.1 (two motorized safety valves with N.O.V.V. no longer applies to listed atmospheric gas boilers). The addition of CSD-1 option satisfies IRI requirement for the 8800 Series.



- Notes:**
1. Dimensions are approximate and should not be used to "rough-in" equipment.
 2. Dimensions are subject to change without notice.

BOILER CERTIFIED RATINGS & CAPACITIES

Fuel Type	Natural/Propane Gas	Boiler FLA	1*
Input BTU/hr.	3,600,000 / 1,055 kW	Min. Gas Pressure Required	6" WC**
Output BTU/hr.	2,952,000 / 865 kW	Max. Gas Pressure Allowed	14" WC
Electrical Requirements	120VAC / 1 ph / 60 hz	Operating Weight	1624 lbs. / 737 kg.

BOILER TEMPERATURE RISE / PRESSURE DROP

30°F / 16.7°C				35°F / 19.4°C			
Flow Rate		Pressure Drop		Flow Rate		Pressure Drop	
GPM	L/s	Ft	kPa	GPM	L/s	Ft	kPa
196.8†	12.4†	10.0	29.3	168.7	10.6	7.5	22.0

† Flow exceeds recommended maximum use a greater temperature rise or consult manufacturer. Cupronickel heat exchanger should be considered.

BOILER / WATER HEATER TRIM & CONTROLS

Main Gas Valve	Honeywell (2) V8944B 1-1/2"	High Limit (HB/HW)	Honeywell L4008E
Firing Valve	Honeywell (2) B200T1041 1-1/2"	Ignition Control	Honeywell S8610M
Safety Valve	Honeywell (2) V88A 2"	Pilot Regulator	White-Rodgers 25M
Operating Control (HB)	Honeywell L4008A - On/Off	Relief Valve - HW	3/4" x 1" set @ 125 psi
Operating Control (HW)	Honeywell L6008A - On/Off	Relief Valve - HB	1-1/4" x 1-1/2" set @ 50 psi
Operating Control (HB/HW)	Honeywell L6008G - 2 Stg.	Flow Switch	TACO
Operating Control (HB/HW)	Tekmar BTC- 4PA- 4 Stg.		

WATER HEATER HOURLY RECOVERY CAPACITY (GPH & LPH)

40°F	22°C	60°F	33°C	80°F	44°C	100°F	56°C	120°F	67°C	140°F	78°C
8860	33537	5906	22358	4430	16769	3544	13415	2953	11179	2531	9582

A.S.M.E.

ASME Sect IV Htg Surface	294.71 Sq. Ft. / 27.38 Sq. M.	Design Data	Max. 160 psig & 250°F
Water Volume	5.2 gal / 19.7 Liters		

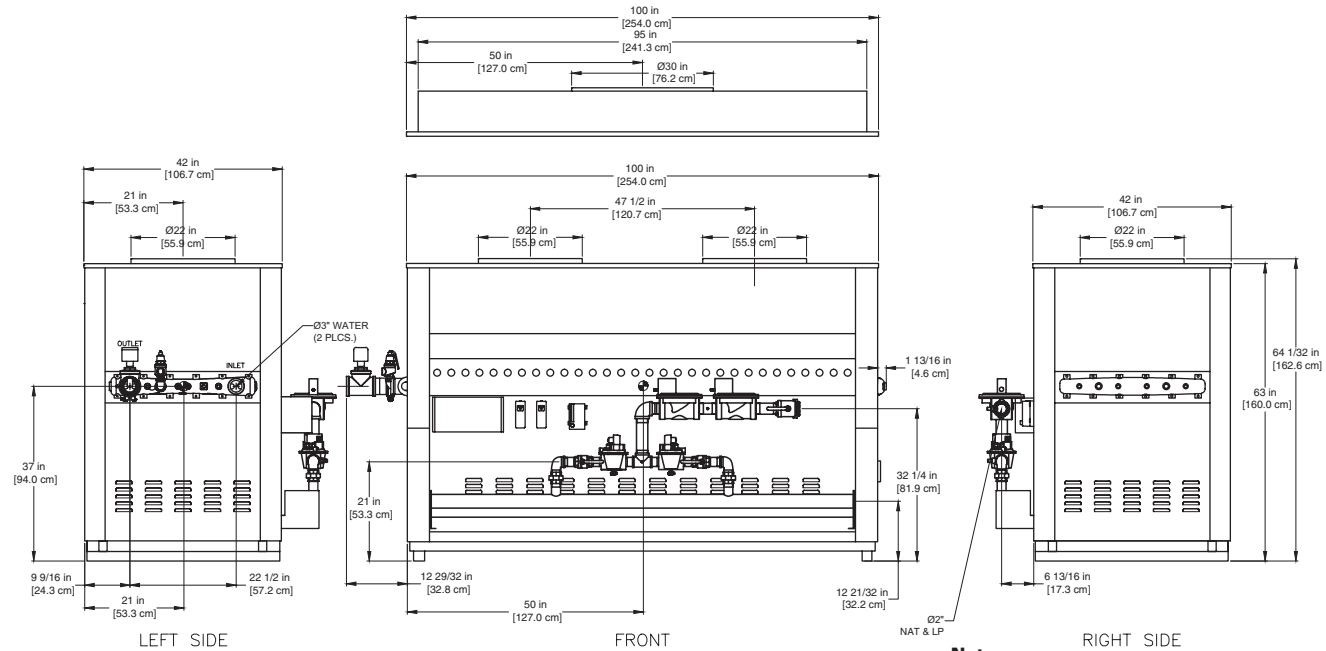
* Add circulator amps.
** For incoming gas pressures lower than 6" WC natural or 11" WC propane, consult factory.

REP FIRM	_____	<h1 style="margin: 0;">8800 3600</h1> <p style="margin: 0;">Category I Appliance Must be vented into a negative pressure vent system.</p> <p style="margin: 0;">RBI® A Division of Mestek, Inc. Westfield, MA 01085 (413) 568-9571</p>
SUBMITTED BY	_____	
JOB NAME	_____	
ARCHITECT	_____	
ENGINEER	_____	
CONTRACTOR	_____	
DATE	_____	

**8800 water heaters are not available for sale in the US and Ontario, Canada markets due to DOE regulations.
8800 boilers are not available for sale in Ontario, Canada.**

CODE OPTIONS

CSD-1	UTC 1003-616A Ignition Control UTC Lockout/Reset Control Manual Reset LWCO
FM	RM7890A Flame Safeguard (2) Motorized Valves (One w/POC) Normally Open Vent Valve Manual Reset LWCO
IRI	IRI requirements as listed in IM.4.1.1 (two motorized safety valves with N.O.V.V. no longer applies to listed atmospheric gas boilers). The addition of CSD-1 option satisfies IRI requirement for the 8800 Series.



Notes:

1. Dimensions are approximate and should not be used to "rough-in" equipment.
2. Dimensions are subject to change without notice.

BOILER CERTIFIED RATINGS & CAPACITIES

Fuel Type	Natural/Propane Gas	Boiler FLA	1*
Input BTU/hr.	4,000,000 / 1,172 kW	Min. Gas Pressure Required	6" WC**
Output BTU/hr.	3,280,000 / 961 kW	Max. Gas Pressure Allowed	14" WC
Electrical Requirements	120VAC / 1 ph / 60 hz	Operating Weight	1808 lbs. / 821 kg.

BOILER TEMPERATURE RISE / PRESSURE DROP

35°F / 19.4°C			
Flow Rate		Pressure Drop	
GPM	L/s	Ft	kPa
187.4†	11.8†	10.1	29.6

† Flow exceeds recommended maximum use a greater temperature rise or consult manufacturer. Cupronickel heat exchanger should be considered.

BOILER / WATER HEATER TRIM & CONTROLS

Main Gas Valve	Honeywell (2) V8944B 1-1/2"	High Limit (HB/HW)	Honeywell L4008E
Firing Valve	Honeywell (2) B200T1058 1-1/2"	Ignition Control	Honeywell S8610M
Safety Valve	Honeywell (2) V88A 2"	Pilot Regulator	White-Rodgers 25M
Operating Control (HB)	Honeywell L4008A - On/Off	Relief Valve - HW	1" x 1" set @125 psi
Operating Control (HW)	Honeywell L6008A - On/Off	Relief Valve - HB	1-1/2" x 2" set @ 50 psi
Operating Control (HB/HW)	Honeywell L6008G - 2 Stg.	Flow Switch	TACO
Operating Control (HB/HW)	Tekmar BTC- 4PA- 4 Stg.		

WATER HEATER HOURLY RECOVERY CAPACITY (GPH & LPH)

40°F	22°C	60°F	33°C	80°F	44°C	100°F	56°C	120°F	67°C	140°F	78°C
9844	37263	6563	24842	4922	18632	3938	14905	3281	12421	2813	10647

A.S.M.E.

ASME Sect IV Htg Surface	326.0 Sq. Ft. / 30.29 Sq. M.	Design Data	Max. 160 psig & 250 °F
Water Volume	5.6 gal / 21.2 Liters		

* Add circulator amps.
** For incoming gas pressures lower than 6" WC natural or 11" WC propane, consult factory.

REP FIRM	_____	<h1 style="margin: 0;">8800 4000</h1> <p style="margin: 0;">Category I Appliance Must be vented into a negative pressure vent system.</p>
SUBMITTED BY	_____	
JOB NAME	_____	
ARCHITECT	_____	
ENGINEER	_____	
CONTRACTOR	_____	
DATE	_____	 RELIABLE. BOLD. INNOVATIVE.

A Division of Mestek, Inc.
Westfield, MA 01085
(413) 568-9571

**8800 water heaters are not available for sale in the US and Ontario, Canada markets due to DOE regulations.
8800 boilers are not available for sale in Ontario, Canada.**