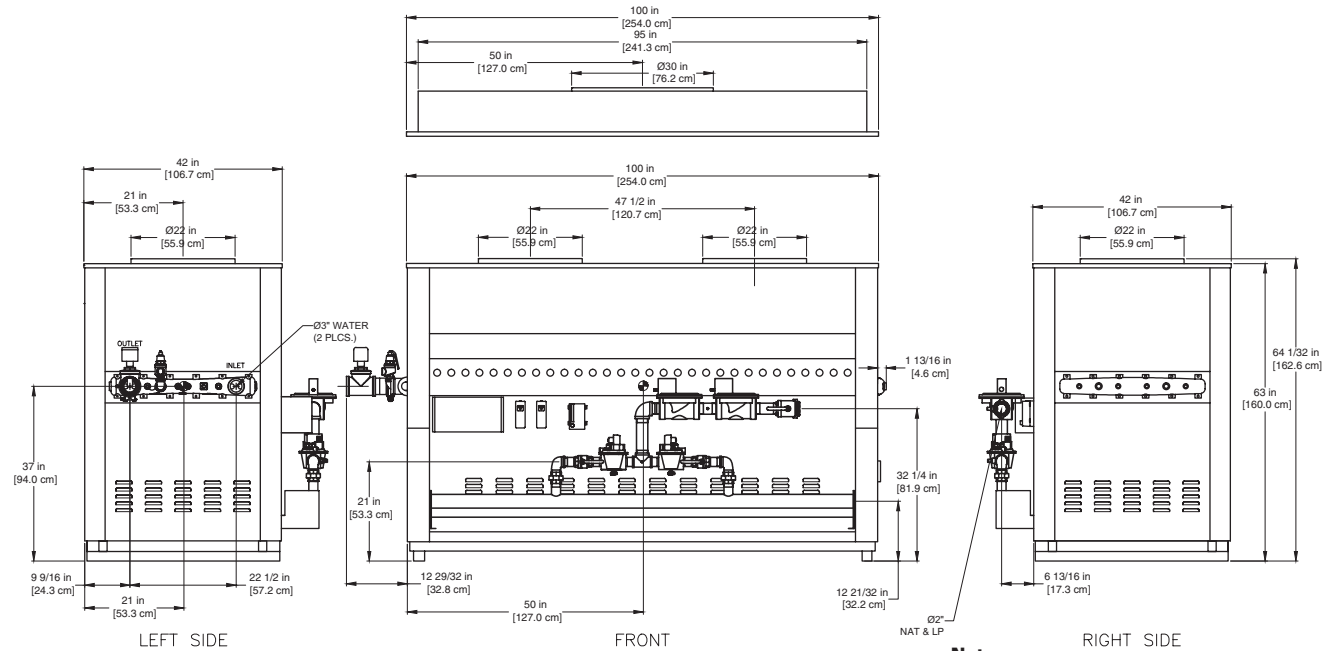


**CODE OPTIONS**

<b>CSD-1</b>	UTC 1003-616A Ignition Control UTC Lockout/Reset Control Manual Reset LWCO
<b>FM</b>	RM7890A Flame Safeguard (2) Motorized Valves (One w/POC) Normally Open Vent Valve Manual Reset LWCO
<b>IRI</b>	IRI requirements as listed in IM.4.1.1 (two motorized safety valves with N.O.V.V. no longer applies to listed atmospheric gas boilers). The addition of CSD-1 option satisfies IRI requirement for the 8800 Series.



**Notes:**

1. Dimensions are approximate and should not be used to "rough-in" equipment.
2. Dimensions are subject to change without notice.

**BOILER CERTIFIED RATINGS & CAPACITIES**

<b>Fuel Type</b>	Natural/Propane Gas	<b>Boiler FLA</b>	1*
<b>Input BTU/hr.</b>	4,000,000 / 1,172 kW	<b>Min. Gas Pressure Required</b>	6" WC**
<b>Output BTU/hr.</b>	3,280,000 / 961 kW	<b>Max. Gas Pressure Allowed</b>	14" WC
<b>Electrical Requirements</b>	120VAC / 1 ph / 60 hz	<b>Operating Weight</b>	1808 lbs. / 821 kg.

**BOILER TEMPERATURE RISE / PRESSURE DROP**

35°F / 19.4°C			
Flow Rate		Pressure Drop	
GPM	L/s	Ft	kPa
187.4†	11.8†	10.1	29.6

† Flow exceeds recommended maximum use a greater temperature rise or consult manufacturer. Cupronickel heat exchanger should be considered.

**BOILER / WATER HEATER TRIM & CONTROLS**

<b>Main Gas Valve</b>	Honeywell (2) V8944B 1-1/2"	<b>High Limit (HB/HW)</b>	Honeywell L4008E
<b>Firing Valve</b>	Honeywell (2) B200T1058 1-1/2"	<b>Ignition Control</b>	Honeywell S8610M
<b>Safety Valve</b>	Honeywell (2) V88A 2"	<b>Pilot Regulator</b>	White-Rodgers 25M
<b>Operating Control (HB)</b>	Honeywell L4008A - On/Off	<b>Relief Valve - HW</b>	1" x 1" set @125 psi
<b>Operating Control (HW)</b>	Honeywell L6008A - On/Off	<b>Relief Valve - HB</b>	1-1/2" x 2" set @ 50 psi
<b>Operating Control (HB/HW)</b>	Honeywell L6008G - 2 Stg.	<b>Flow Switch</b>	TACO
<b>Operating Control (HB/HW)</b>	Tekmar BTC- 4PA- 4 Stg.		

**WATER HEATER HOURLY RECOVERY CAPACITY (GPH & LPH)**

40°F	22°C	60°F	33°C	80°F	44°C	100°F	56°C	120°F	67°C	140°F	78°C
9844	37263	6563	24842	4922	18632	3938	14905	3281	12421	2813	10647

**A.S.M.E.**

<b>ASME Sect IV Htg Surface</b>	326.0 Sq. Ft. / 30.29 Sq. M.	<b>Design Data</b>	Max. 160 psig & 250 °F
<b>Water Volume</b>	5.6 gal / 21.2 Liters		

\* Add circulator amps.  
\*\* For incoming gas pressures lower than 6" WC natural or 11" WC propane, consult factory.

<b>REP FIRM</b>	_____	<h1 style="margin: 0;">8800 4000</h1> <p style="margin: 0;"><b>Category I Appliance</b> Must be vented into a negative pressure vent system.</p>
<b>SUBMITTED BY</b>	_____	
<b>JOB NAME</b>	_____	
<b>ARCHITECT</b>	_____	
<b>ENGINEER</b>	_____	
<b>CONTRACTOR</b>	_____	
<b>DATE</b>	_____	 <b>RELIABLE. BOLD. INNOVATIVE.</b>

A Division of Mestek, Inc.  
Westfield, MA 01085  
(413) 568-9571

**8800 water heaters are not available for sale in the US and Ontario, Canada markets due to DOE regulations.  
8800 boilers are not available for sale in Ontario, Canada.**