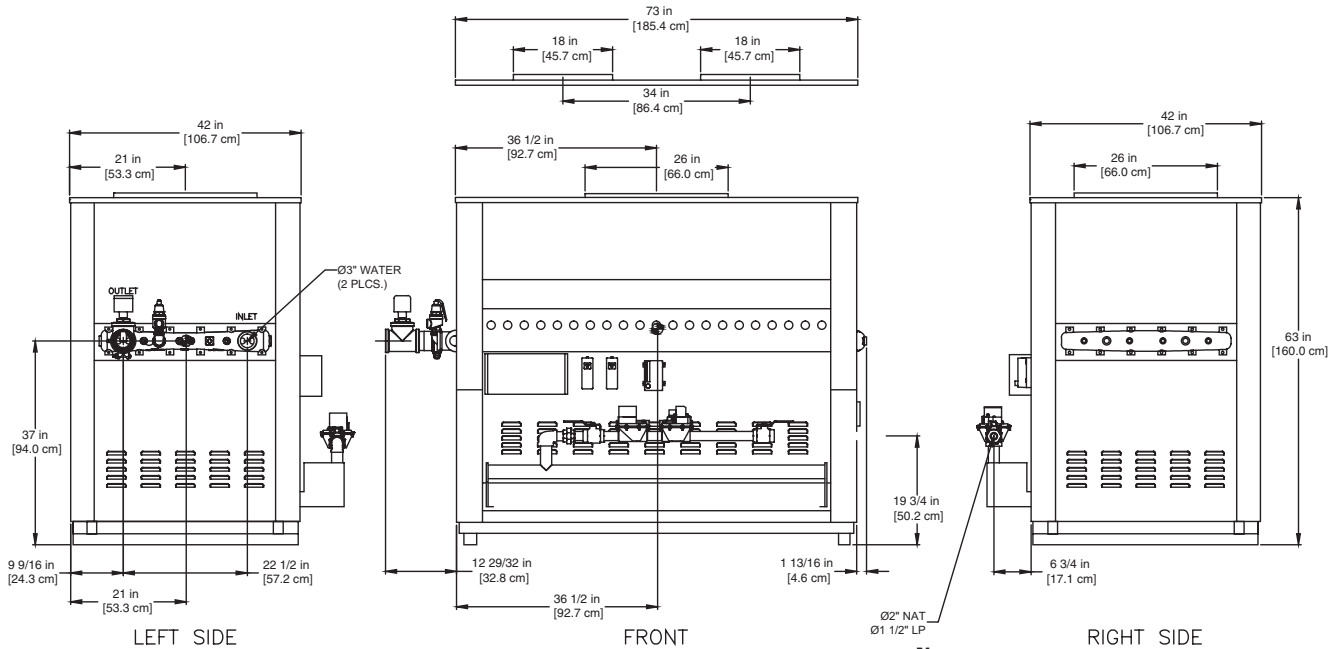


**CODE OPTIONS**

<b>CSD-1</b>	UTC 1003-616A Ignition Control UTC Lockout/Reset Control Manual Reset LWCO
<b>FM</b>	RM7890A Flame Safeguard (2) Motorized Valves (One w/POC) Normally Open Vent Valve Manual Reset LWCO
<b>IRI</b>	IRI requirements as listed in IM.4.1.1 (two motorized safety valves with N.O.V.V. no longer applies to listed atmospheric gas boilers). The addition of CSD-1 option satisfies IRI requirement for the 8800 Series.



- Notes:**  
 1. Dimensions are approximate and should not be used to "rough-in" equipment.  
 2. Dimensions are subject to change without notice.

**BOILER CERTIFIED RATINGS & CAPACITIES**

<b>Fuel Type</b>	Natural/Propane Gas	<b>Boiler FLA</b>	1*
<b>Input BTU/hr.</b>	2,800,000 / 820 kW	<b>Min. Gas Pressure Required</b>	6" WC**
<b>Output BTU/hr.</b>	2,296,000 / 673 kW	<b>Max. Gas Pressure Allowed</b>	14" WC
<b>Electrical Requirements</b>	120VAC / 1 ph / 60 hz	<b>Operating Weight</b>	1394 lbs. / 633 kg.

**BOILER TEMPERATURE RISE / PRESSURE DROP**

25°F / 13.9°C		30°F / 16.7°C		35°F / 19.4°C							
Flow Rate	Pressure Drop	Flow Rate	Pressure Drop	Flow Rate	Pressure Drop						
GPM	L/s	Ft	kPa	GPM	L/s	Ft	kPa	GPM	L/s	Ft	kPa
183.7	11.6	6.9	20.3	153.1	9.7	4.9	14.5	131.2	8.3	3.7	10.9

**BOILER / WATER HEATER TRIM & CONTROLS**

<b>Main Gas Valve</b>	Honeywell V8944B 2"	<b>High Limit (HB/HW)</b>	Honeywell L4008E
<b>Firing Valve</b>	Honeywell B200T1066 2"	<b>Ignition Control</b>	Honeywell S8610M
<b>Safety Valve</b>	Honeywell (2) V88A 2"	<b>Pilot Regulator</b>	White-Rodgers 25M
<b>Operating Control (HB)</b>	Honeywell L4008A - On/Off	<b>Relief Valve - HW</b>	3/4" x 3/4" set @125 psi
<b>Operating Control (HW)</b>	Honeywell L6008A - On/Off	<b>Relief Valve - HB</b>	1-1/4" x 1-1/2" set @ 50 psi
<b>Operating Control (HB/HW)</b>	Honeywell L6008G - 2 Stg.	<b>Flow Switch</b>	TACO
<b>Operating Control (HB/HW)</b>	Tekmar BTC- 4PA- 4 Stg.		

**WATER HEATER HOURLY RECOVERY CAPACITY (GPH & LPH)**

40°F	22°C	60°F	33°C	80°F	44°C	100°F	56°C	120°F	67°C	140°F	78°C
6891	26084	4594	17390	3445	13042	2756	10434	2297	8695	1969	7453

**A.S.M.E.**

<b>ASME Sect IV Htg Surface</b>	232.12 Sq. Ft. / 21.56 Sq. M.	<b>Design Data</b>	Max. 160 psig & 250 °F
<b>Water Volume</b>	4.4 gal / 16.7 Liters		

\* Add circulator amps.  
 \*\* For incoming gas pressures lower than 6" WC natural or 11" WC propane, consult factory.

<b>REP FIRM</b>	_____	<h1 style="margin: 0;">8800 2800</h1> <p style="margin: 0;"><b>Category I Appliance</b> Must be vented into a negative pressure vent system.</p> <p style="margin: 0; font-size: small;">A Division of Mestek, Inc. Westfield, MA 01085 (413) 568-9571</p>
<b>SUBMITTED BY</b>	_____	
<b>JOB NAME</b>	_____	
<b>ARCHITECT</b>	_____	
<b>ENGINEER</b>	_____	
<b>CONTRACTOR</b>	_____	
<b>DATE</b>	_____	

**8800 water heaters are not available for sale in the US and Ontario, Canada markets due to DOE regulations.  
 8800 boilers are not available for sale in Ontario, Canada.**