

Steel Control Damper • 4" Deep • Single Thickness Blade • Parallel or Opposed • Low Leakage

STANDARD CONSTRUCTION

FRAME: 16-GA galvanized steel, hat-shaped channel, 4" deep.

BLADE: 16-GA galvanized steel, on 6" centers.

LINKAGE: Pivots are 1/2" dia. plated steel. A 1/4-20 set screw with locking patch locks the pivots to a .31" dia. aluminum rod. Pivots rotate in a celcon bearing. Blade brackets are 12-GA plated steel. Blade linkages are individually factory adjusted for maximum shut-off.

BEARINGS: Sintered bronze, oil impregnated.

AXLES: Plated steel, 1/2" dia.

DRIVESHAFT: 1/2" dia. plated steel, extendable 6".

SEALS: Vinyl grip on blades, stainless steel on jamb.

FINISH: Mill.

OPTIONS

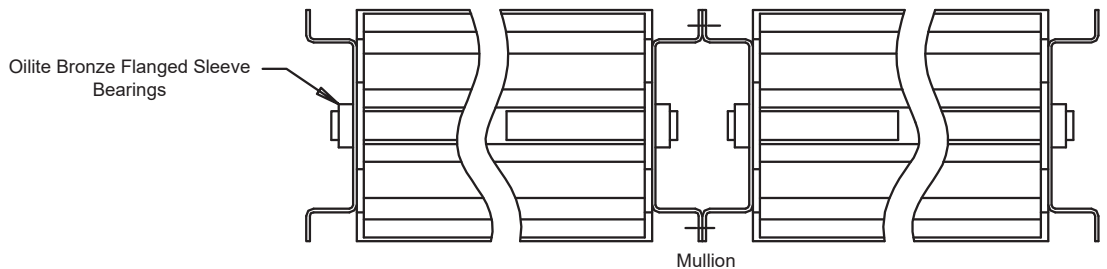
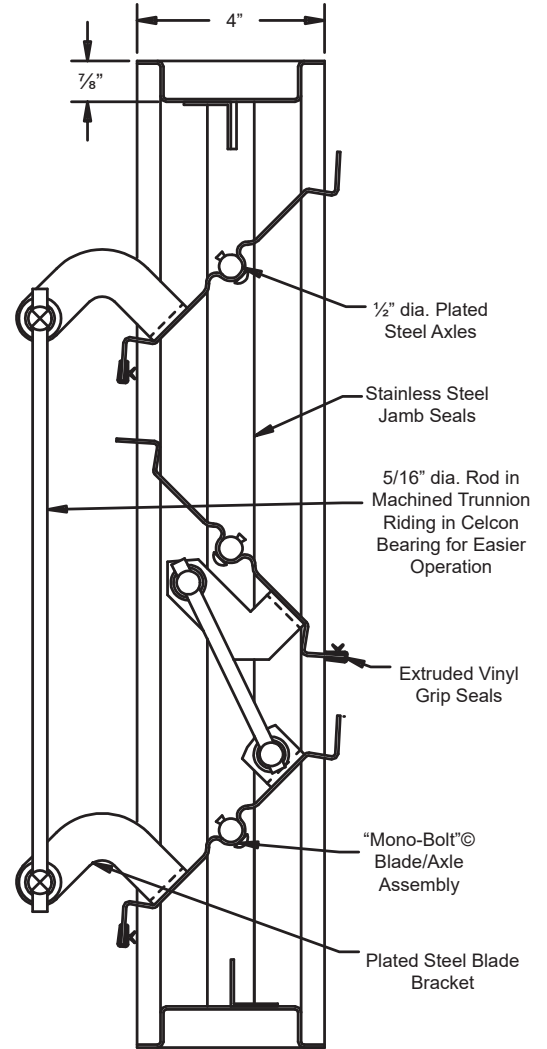
- 1 & 1/4" Flange Frame
- Neoprene Blade Seals Only
- 13 GA Galvanized Steel Frame
- Additional Drive Shafts
- S.S. Drive Shafts Factory Joined Sections
- Face & Bypass Dampers
- In-jamb Linkage
- Finishes - Baked Enamel, Kynar, or Anodize

NOTES

1. 1/4" nominal deduction will be made to the opening size given.
2. Dampers less than 11" high will be a single blade.
3. Dampers between the height of 11" and 14 3/4" will have two blades, opposed action only. Dampers less than 8 3/4" in height will be provided with a 5/8" x 2" x 5/8" extruded aluminum frame.
4. Damper is rated for systems up to 2,000 fpm or up to 4 in. w.g. If being used for applications beyond this, please advise when ordering.
5. Shipping weight approximately 6.5 lbs. per sq.ft.

DAMPER SIZES

Min Panel	Max Single Panel
6"W x 8 3/4"H	48"W x 72"H



Item #	Qty	Damper Size		Parallel Blades	Opposed Blades	Seals	Actuator Model	Interior	Exterior	N.C.	N.O.	Union Made
		Width	Height					Act. Location				
Arch. / Eng.:						EDR:		ECN:		Job:		
Contractor:												
Project:						Date:		DWN:		DWG:		

In the interest of product development, Louvers & Dampers reserves the right to make changes without notice.



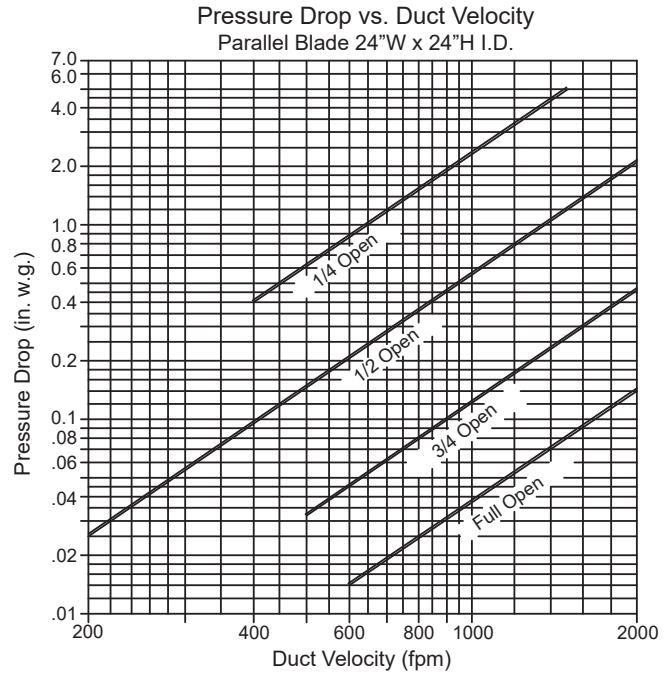
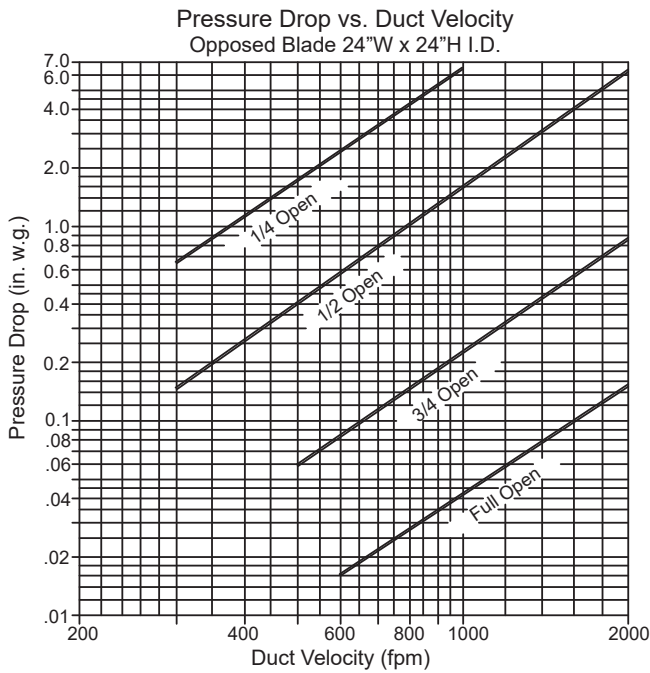
www.louvers-dampers.com

450 Riverside Drive • Wyalusing PA, 18853 • Phone 570-746-1888 • Fax 570-746-9286

Steel Control Damper • 4" Deep • Single Thickness Blade • Parallel or Opposed • Low Leakage

PRESSURE DROP

Pressure Drop Ratings are based on AMCA Standard 500 using test set-up Fig. 5.3 for damper installed with duct upstream and downstream. Static pressures are corrected to .075 lb/cu.ft. air density.



AIR LEAKAGE

Leakage Ratings are based on AMCA Standard 500 using test set-up Fig. 5.4. Data is based on a closing torque of 5 in-lbs/sq.ft. with a minimum of 25 in-lbs of closing torque applied to damper operating shaft, regardless of damper size.

Total CFM Air Leakage at 1 in. w.g.
Differential Through Closed Damper.

		Width			
		12"	24"	36"	48"
Height	12"	3	6	9	12
	18"	5	9	14	18
	24"	6	12	18	24
	30"	8	15	23	30
	36"	9	18	27	36
	42"	11	21	32	42
	48"	12	24	36	48
	54"	14	27	41	54
	60"	15	30	45	60
66"	17	33	50	66	
72"	18	36	54	72	

Air leakage quantities shown above are corrected to standard air density. Air leakage is based on operation between 50°F -104°F.

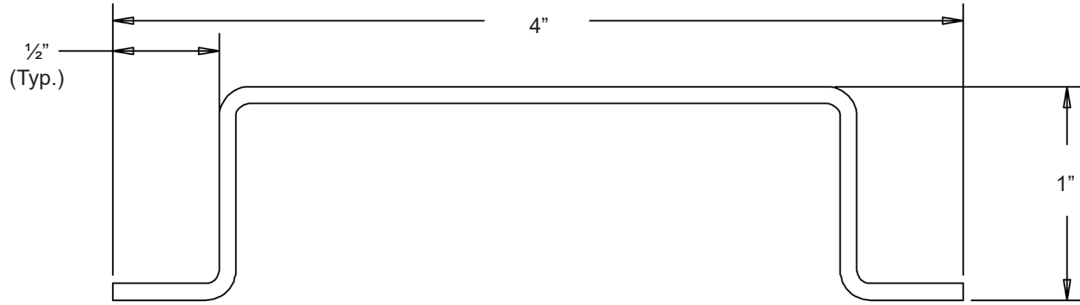
Air Leakage Correction Factors

Blade Length Limit	Pressure (in. w.g.)	Conversion Factor
48" or less	2	1.27
	3	1.60
	4	1.90

Use of correction factors will give leakage values at greater than 1" pressures.

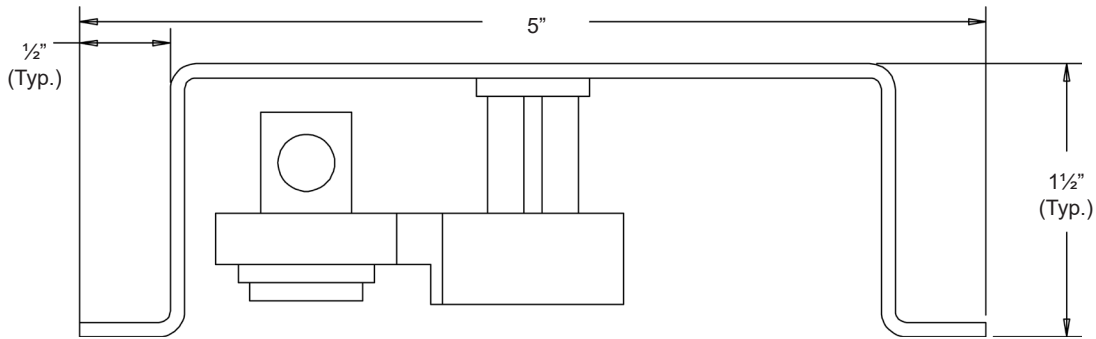
Steel Control Damper • 4" Deep • Single Thickness Blade • Parallel or Opposed • Low Leakage

OPTIONAL DAMPER FRAMES FOR USE WITH AIRFOIL-BLADE STEEL CONTROL DAMPERS

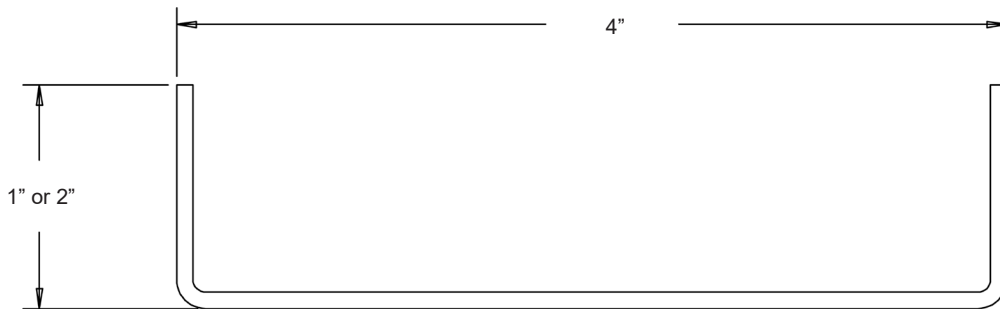


Hat-shaped Frame

Hat-shaped frames are fabricated to 14 GA. steel when a "double-sealed" press fit bearing is used. With flange sleeve oilitebearings, frame thickness can increase to 12 GA. thickness.



Hat-shaped Frame with In-jamb Linkage



Channel Frame

Channel frames are fabricated to 14 GA. steel when a "double-sealed" press fit bearing is used. With flange sleeve oilitebearings, frame thickness can increase to 10 GA. thickness.