

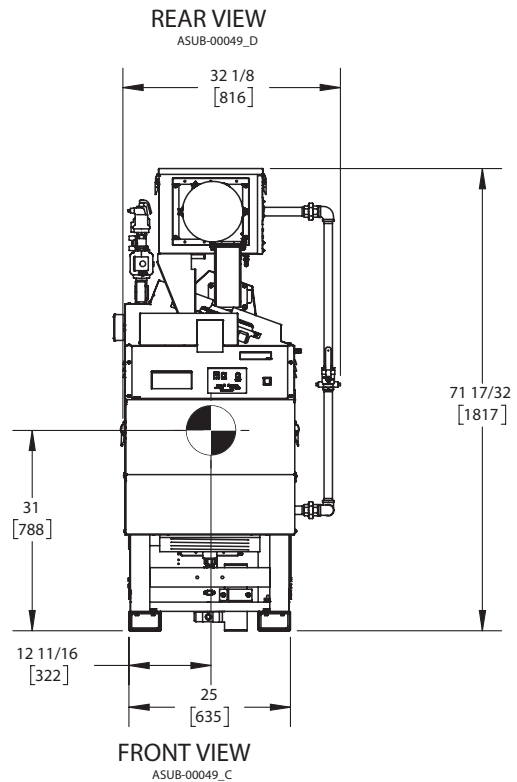
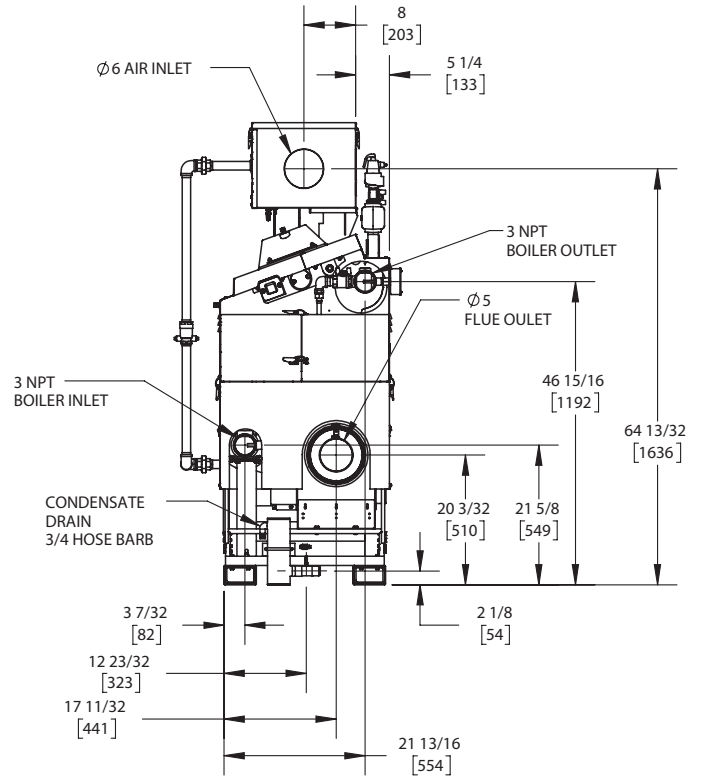
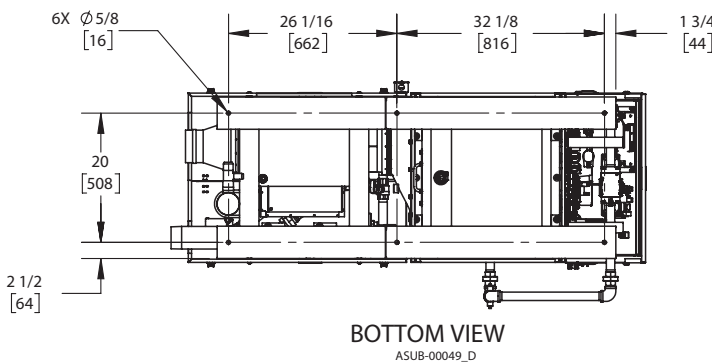
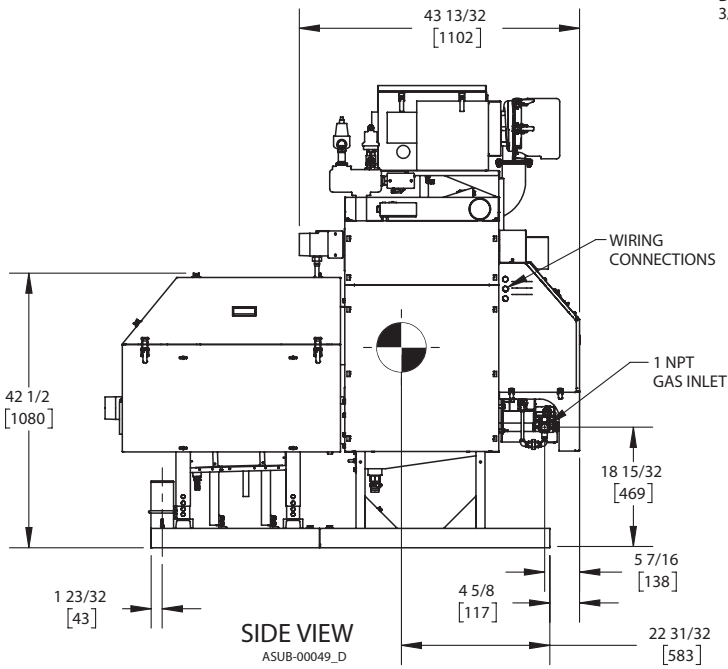
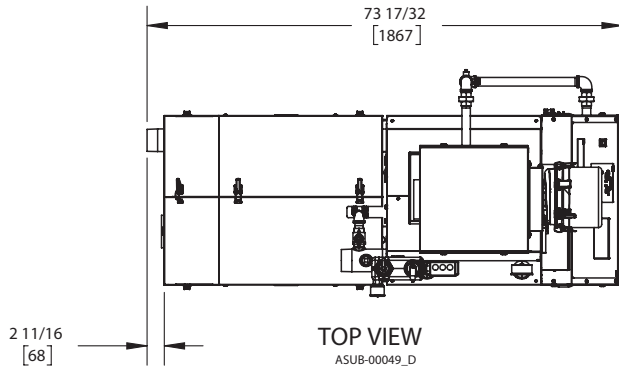
# KN10+

Category II or Category IV Appliance  
(see Installation and Operation Manual for venting information)

## CODE OPTIONS

|       |          |
|-------|----------|
| CSD-1 | STANDARD |
|-------|----------|

## INDOOR UNIT



### NOTES:

1. SYMBOL INDICATES CENTER OF GRAVITY.
2. DIMENSIONS ARE NOMINAL AND SUBJECT TO MANUFACTURING VARIATION AND SHOULD NOT BE USED FOR "ROUGHING IN".
3. ALL DIMENSIONS ARE INCHES [mm].



## A.G.A. CERTIFIED RATINGS & CAPACITIES

|                                |                    |                                   |                     |
|--------------------------------|--------------------|-----------------------------------|---------------------|
| <b>Fuel Type</b>               | Natural/LP Gas     | <b>Boiler FLA</b>                 | 13.9 A*             |
| <b>Input BTU/hr.</b>           | 1,000,000 / 293 KW | <b>Min. Gas Pressure Required</b> | 3" W.C.             |
| <b>Output BTU/hr.</b>          | 952,000 / 279 KW   | <b>Max. Gas Pressure Allowed</b>  | 14" W.C.            |
| <b>Boiler HP</b>               | 28.4               | <b>Water Volume</b>               | 14.5 gal.           |
| <b>Electrical Requirements</b> | 120VAC/ 60 hz/ 1PH | <b>Operating Weight</b>           | 1850 lbs. / 839 kg. |
| <b>SCCR Rating</b>             | 5kA                |                                   |                     |

## BOILER TRIM & CONTROLS

|                          |                   |                            |                      |
|--------------------------|-------------------|----------------------------|----------------------|
| <b>Main Gas Valve</b>    | Dungs MBC         | <b>Air Switch</b>          | Huba                 |
| <b>Firing Valve</b>      | 1" Apollo         | <b>Flow Sensor</b>         | SIKA                 |
| <b>Ignition Control</b>  | Honeywell RM7895C | <b>Blocked Flue Switch</b> | Cleveland NS2        |
| <b>Operating Control</b> | HeatNet®          | <b>Blower Motor</b>        | Ametek               |
| <b>High Limit</b>        | Honeywell L4006E  | <b>L.W.C.O.</b>            | 800                  |
| <b>Main Ball Valve</b>   | 1" Apollo         | <b>Relief Valve</b>        | 30, 50, 75 & 100 PSI |
| <b>Pilot Cock</b>        | 1/4" Conbraco     | <b>Pilot Regulator</b>     | Maxitrol RV12LT      |

## A.S.M.E.

|                                    |                             |                    |                 |
|------------------------------------|-----------------------------|--------------------|-----------------|
| <b>ASME Fire Side Htg Surface</b>  | 34.48 Sq. Ft. / 3.20 Sq. M. | <b>Design Data</b> | 100 PSI & 250°F |
| <b>ASME Water Side Htg Surface</b> | 45.17 Sq. Ft. / 4.20 Sq. M. |                    |                 |
| <b>CV. GPM (1PSID)</b>             | 100                         |                    |                 |

\*Add circulator amps.

## TEMPERATURE RISE / PRESSURE DROP (Based on Full Input)

| 20°F / 11.1°C |      |               |      | 40°F / 22.2°C |      |               |      | 60°F / 33.3°C |      |               |     | 80°F / 44.4°C |      |               |     | 100°F / 55.5°C |      |               |     |
|---------------|------|---------------|------|---------------|------|---------------|------|---------------|------|---------------|-----|---------------|------|---------------|-----|----------------|------|---------------|-----|
| Flow Rate     |      | Pressure Drop |      | Flow Rate     |      | Pressure Drop |      | Flow Rate     |      | Pressure Drop |     | Flow Rate     |      | Pressure Drop |     | Flow Rate      |      | Pressure Drop |     |
| GPM           | L/s  | Ft            | kPa  | GPM           | L/s  | Ft            | kPa  | GPM           | L/s  | Ft            | kPa | GPM           | L/s  | Ft            | kPa | GPM            | L/s  | Ft            | kPa |
| 95.2          | 6.01 | 2.09          | 6.26 | 47.6          | 3.00 | .52           | 1.56 | 31.7          | 2.00 | .23           | .70 | 23.8          | 1.50 | .13           | .39 | 19.0           | 1.20 | .08           | .25 |

| Flow GPM |      | Temp. Rise** (°F) |     | Vent Length (Equiv. Ft.) |     | Air Inlet Length (Equiv. Ft.) |     |
|----------|------|-------------------|-----|--------------------------|-----|-------------------------------|-----|
| Min      | Max  | Min               | Max | Min                      | Max | Min                           | Max |
| 19.0     | 95.2 | 20                | 100 | 6                        | 100 | 0                             | 100 |

\*\*Min/Max delta t reflects boiler operation at full input. For applications requiring operation above/below these parameters please consult factory.

|                     |       |
|---------------------|-------|
| <b>REP FIRM</b>     | _____ |
| <b>SUBMITTED BY</b> | _____ |
| <b>JOB NAME</b>     | _____ |
| <b>ARCHITECT</b>    | _____ |
| <b>ENGINEER</b>     | _____ |
| <b>CONTRACTOR</b>   | _____ |
| <b>DATE</b>         | _____ |

# KN10+

**Category II or Category IV Appliance**  
(see Installation and Operation Manual for venting information)



A Division of Mestek, Inc.  
Westfield, MA 01085  
(413) 564-5515