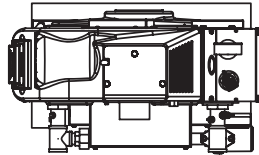
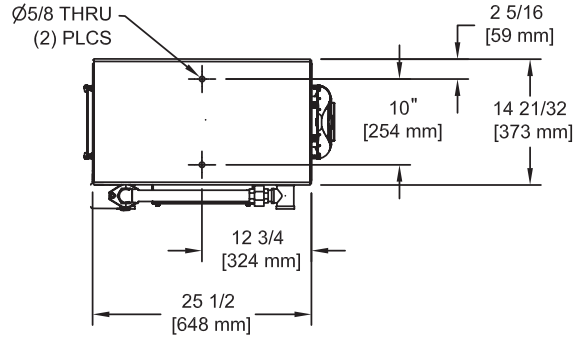


KN-2

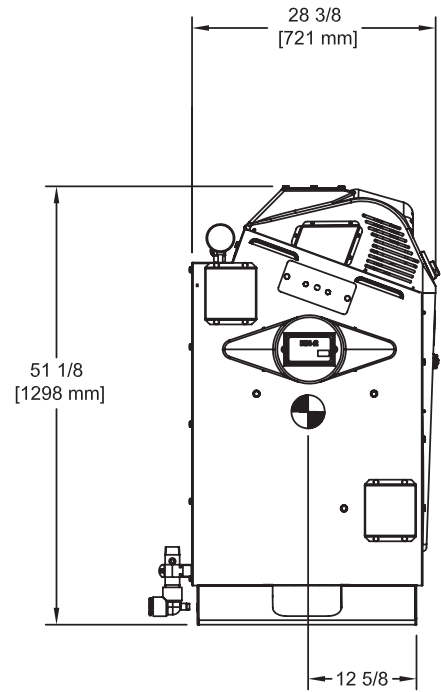
Category II or Category IV Appliance
 (see Installation and Operation Manual for venting information)



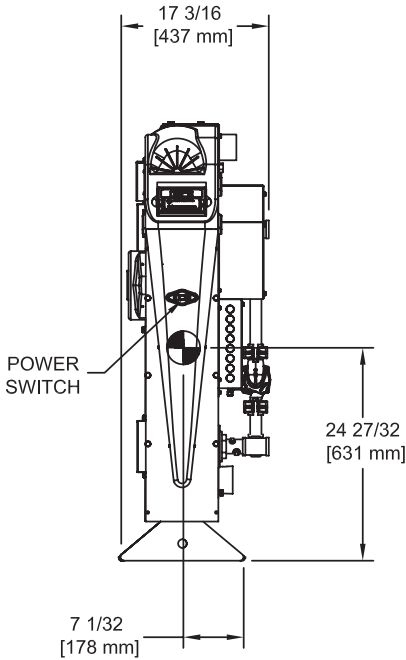
TOP
 HSUB-7 REV. E



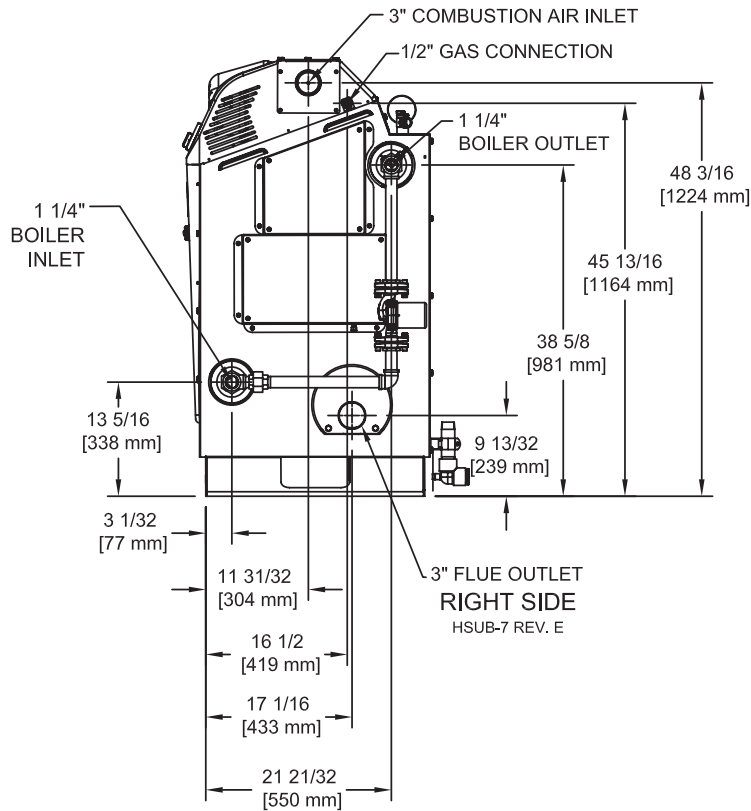
BOTTOM
 HSUB-7 REV. E



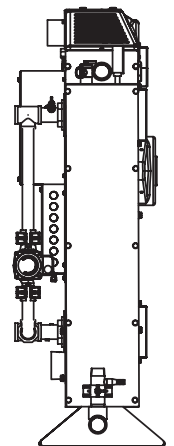
LEFT SIDE
 HSUB-7 REV. E



FRONT
 HSUB-7 REV. E



RIGHT SIDE
 HSUB-7 REV. E



REAR
 HSUB-7 REV. E



A.G.A. CERTIFIED RATINGS & CAPACITIES

Fuel Type	Natural/LP Gas	Boiler FLA	2.5 A*
Input BTU/hr.	199 MBH / 59 KW	Min. Gas Pressure Required	2" W.C.
Output BTU/hr.	179 MBH / 53 KW	Max. Gas Pressure Allowed	14" W.C.
Boiler HP	5.4	Water Volume	3.9 gal.
Electrical Requirements	120VAC/ 60 hz/ 1PH	Operating Weight	563 lbs. / 256 kg.

BOILER TRIM & CONTROLS

Main Gas Valve	Dungs GB-WND	Air Switch	Cleveland NS-2
Ignition Control	Fenwal 35-60	Blower Motor	Ametek
Operating Control	HeatNet®	Relief Valve	30, 50, 75 & 100 PSI
High Limit	P-SW-13004-X		

A.S.M.E.

ASME Sect IV Fire Side Htg Surface	13.30 Sq. Ft. / 1.23 Sq. M.	Design Data	100 PSI & 250°F
ASME Sect IV Water Side Htg Surface	14.22 Sq. Ft. / 1.32 Sq. M.		
CV. GPM (1PSID)	20		

*Add circulator amps.

TEMPERATURE RISE / PRESSURE DROP (Based on Full Input)

20°F / 11.1°C				40°F / 22.2°C				60°F / 33.3°C				80°F / 44.4°C				100°F / 55.5°C			
Flow Rate		Pressure Drop		Flow Rate		Pressure Drop		Flow Rate		Pressure Drop		Flow Rate		Pressure Drop		Flow Rate		Pressure Drop	
GPM	L/s	Ft	kPa	GPM	L/s	Ft	kPa	GPM	L/s	Ft	kPa	GPM	L/s	Ft	kPa	GPM	L/s	Ft	kPa
18.0	1.14	1.87	5.6	9.0	.57	.47	1.40	6.00	.38	.21	.62	4.5	.28	.12	.35	3.6	.23	.07	.22

Flow GPM				Temp. Rise** (°F)				Vent Length (Equiv. Ft.)				Air Inlet Length (Equiv. Ft.)			
Min		Max		Min		Max		Min		Max		Min		Max	
3.6		18.0		20		100		6		100		0		100	

**Min/Max delta t reflects boiler operation at full input. For applications requiring operation above/below these parameters please consult factory.

REP FIRM	_____
SUBMITTED BY	_____
JOB NAME	_____
ARCHITECT	_____
ENGINEER	_____
CONTRACTOR	_____
DATE	_____

KN-2

Category II or Category IV Appliance
(see Installation and Operation Manual for venting information)



A Division of Mestek, Inc.
Westfield, MA 01085
(413) 564-5515