

AIR INLET CONNECTION
TABLE 2

COIL CONNECTION
TABLE 1

UNIT LENGTH
TABLE 3

TABLE 3

NOM UNIT LENGTH (FT)	OVERALL LENGTH (in)	DRY WEIGHT (LB)	WET WEIGHT (LB)
2	23.75	21.2	22.0
4	47.75	41.5	43.3
6	71.75	62.3	65.0
8	95.75	82.8	86.6
10	119.75	103.4	108.2

TABLE 1
AVAILABLE OPTIONS

Ø1/2" O.D. SWT CONNECTION	<input type="checkbox"/>
Ø1/2" FEMALE NPT CONNECTION	<input type="checkbox"/>
Ø1/2" MALE NPT CONNECTION	<input type="checkbox"/>

TABLE 2

REF.	DIAMETER	AVAILABLE LOCATIONS
4" ROUND	4.00"	SIDE OR TOP
6" ROUND	6.00"	SIDE OR TOP
8" ROUND	8.00"	TOP ONLY
8" ELLIPTICAL	9.38"X6.43"	SIDE ONLY
10" OVAL	12.75"X4.6"	SIDE ONLY

SECTION C-C
SCALE 1/6

NOTES:

1. DRAWING INDICATES "D" & "E" AIR AND COIL CONNECTION HANDINGS.
(REFER TO MODEL HANDINGS CONFIGURATION KEY FOR AVAILABLE OPTIONS).
2. FACE COLOR WILL BE STANDARD WHITE UNLESS SPECIFIED OTHERWISE.
3. EITHER PIPE CAN BE USED FOR SUPPLY OR RETURN WATER.

PROJECT ACB45/55 SUBMITTAL DRAWING

STRICTLY CONFIDENTIAL

DADANCO - A MESTEK CO.
47 Westfield Industrial Park Rd WESTFIELD, MA 01085
Ph. (413) 564-5657, Fax. (413) 568-2969
www.dadanco.com

DADANCO - A MESTEK CO.

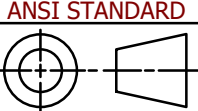
DRN	YL	02/25/2021
CKD	DL	02/25/2021
APPD	AK	02/25/2021
ISSUED		

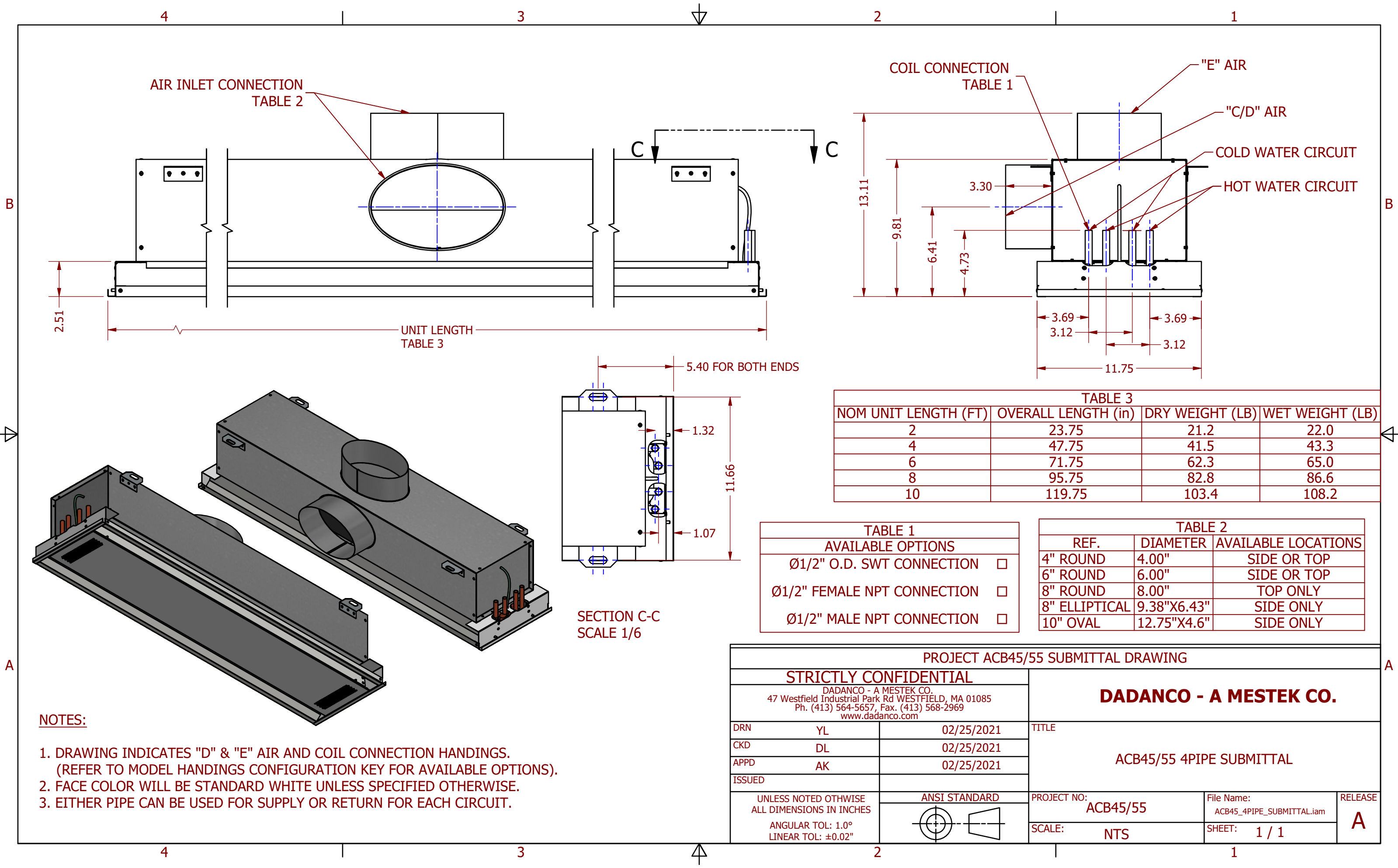
TITLE

ACB45/55 2PIPE SUBMITTAL

PROJECT NO: ACB45/55	File Name: ACB45_2PIPE_SUBMITTAL.iam	RELEASE
SCALE: NTS	SHEET: 1 / 1	A

UNLESS NOTED OTHERWISE
ALL DIMENSIONS IN INCHES
ANGULAR TOL: 1.0°
LINEAR TOL: ±0.02"





AIR INLET CONNECTION
TABLE 2

COIL CONNECTION
TABLE 1

UNIT LENGTH
TABLE 3

TABLE 3

NOM UNIT LENGTH (FT)	OVERALL LENGTH (in)	DRY WEIGHT (LB)	WET WEIGHT (LB)
2	23.75	21.2	22.0
4	47.75	41.5	43.3
6	71.75	62.3	65.0
8	95.75	82.8	86.6
10	119.75	103.4	108.2

TABLE 1

AVAILABLE OPTIONS

Ø1/2" O.D. SWT CONNECTION	<input type="checkbox"/>
Ø1/2" FEMALE NPT CONNECTION	<input type="checkbox"/>
Ø1/2" MALE NPT CONNECTION	<input type="checkbox"/>

TABLE 2

REF.	DIAMETER	AVAILABLE LOCATIONS
4" ROUND	4.00"	SIDE OR TOP
6" ROUND	6.00"	SIDE OR TOP
8" ROUND	8.00"	TOP ONLY
8" ELLIPTICAL	9.38"X6.43"	SIDE ONLY
10" OVAL	12.75"X4.6"	SIDE ONLY

SECTION C-C
SCALE 1/6

NOTES:

1. DRAWING INDICATES "D" & "E" AIR AND COIL CONNECTION HANDINGS.
(REFER TO MODEL HANDINGS CONFIGURATION KEY FOR AVAILABLE OPTIONS).
2. FACE COLOR WILL BE STANDARD WHITE UNLESS SPECIFIED OTHERWISE.
3. EITHER PIPE CAN BE USED FOR SUPPLY OR RETURN FOR EACH CIRCUIT.

PROJECT ACB45/55 SUBMITTAL DRAWING

STRICTLY CONFIDENTIAL

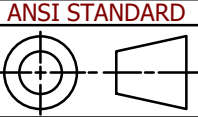
DADANCO - A MESTEK CO.
47 Westfield Industrial Park Rd WESTFIELD, MA 01085
Ph. (413) 564-5657, Fax. (413) 568-2969
www.dadanco.com

DADANCO - A MESTEK CO.

DRN	YL	02/25/2021
CKD	DL	02/25/2021
APPD	AK	02/25/2021
ISSUED		

TITLE	
ACB45/55 4PIPE SUBMITTAL	
PROJECT NO: ACB45/55	File Name: ACB45_4PIPE_SUBMITTAL.iam
SCALE: NTS	SHEET: 1 / 1
RELEASE A	

UNLESS NOTED OTHERWISE
ALL DIMENSIONS IN INCHES
ANGULAR TOL: 1.0°
LINEAR TOL: ±0.02"

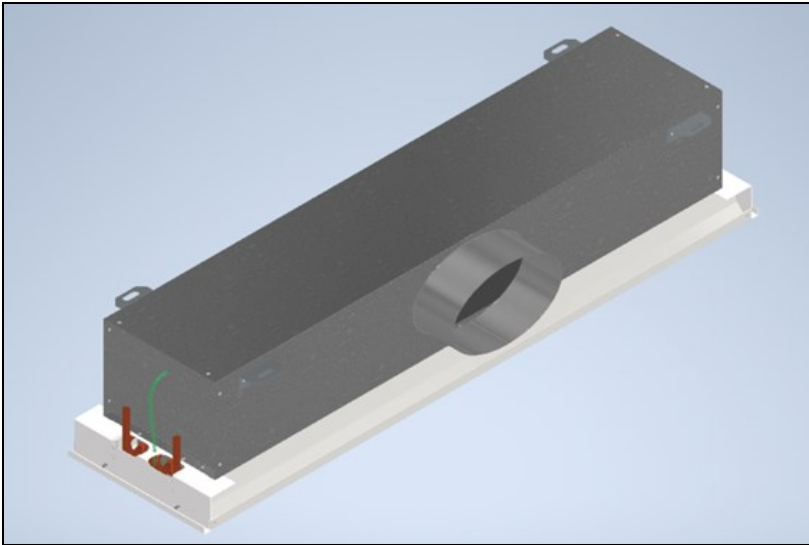


AIR AND COIL CONFIGURATION KEY

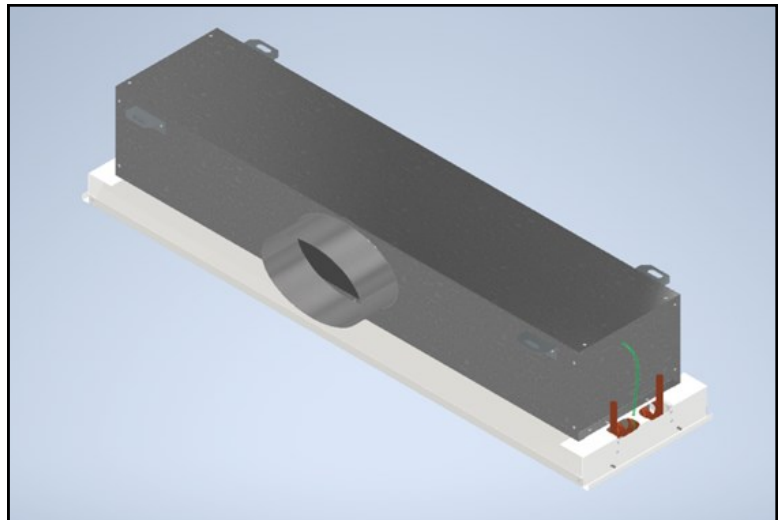
ACB45 MODEL

SIDE DUCT CONNECTION

Available Connection Sizes: 4", 5", 6" Round, 8" Elliptical, 10" Oval



AIR: C
COIL: C



AIR: D
COIL: D

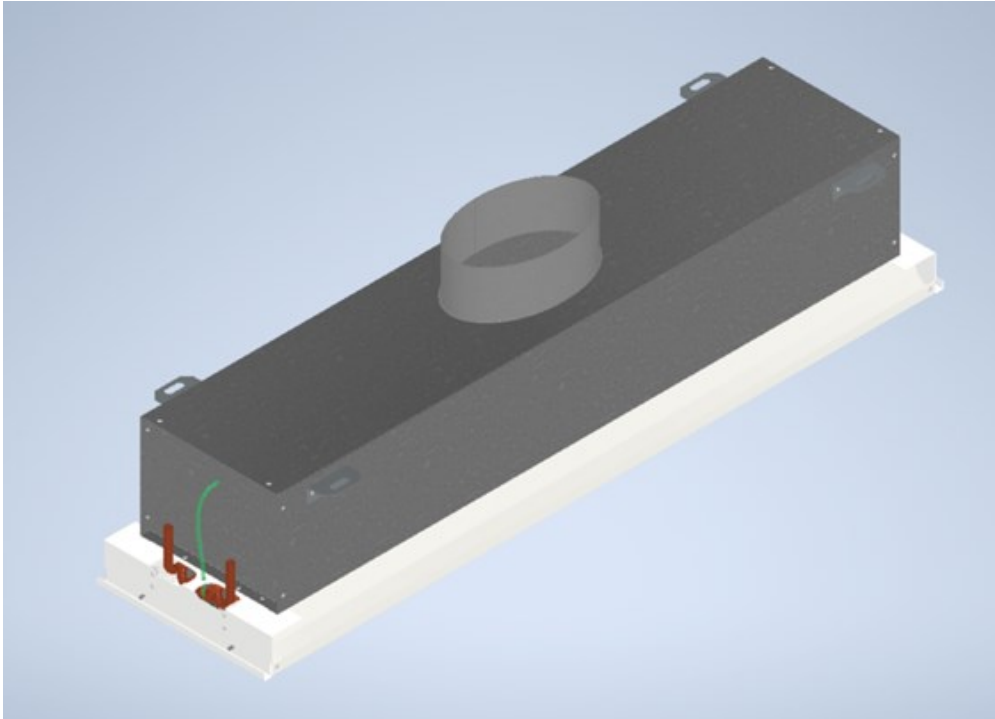
NOTE: Air Handling is represented by digit 14 in the model number
Coil Handling is represented by digit 16 in the model number

AIR AND COIL CONFIGURATION KEY

ACB45 MODEL

TOP DUCT CONNECTION

Available Connection Sizes: 4", 5", 6", 8" Round



AIR: E
COIL: E

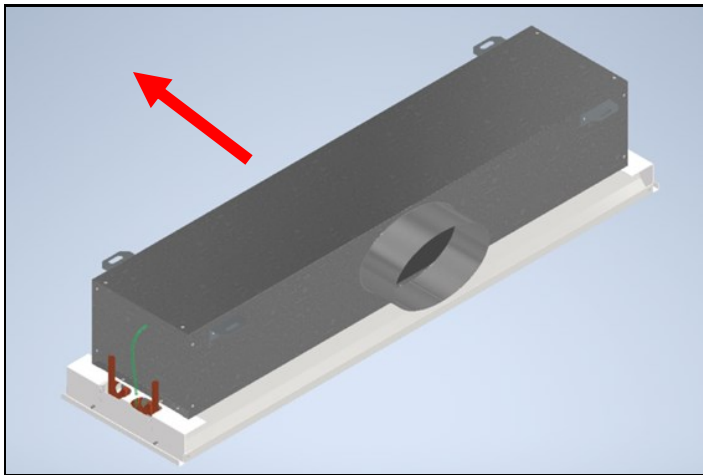
NOTE: Air Handling is represented by digit 14 in the model number
Coil Handling is represented by digit 16 in the model number
ACB45 Units with top connection are symmetrical, no differences in handling.

AIR AND COIL CONFIGURATION KEY

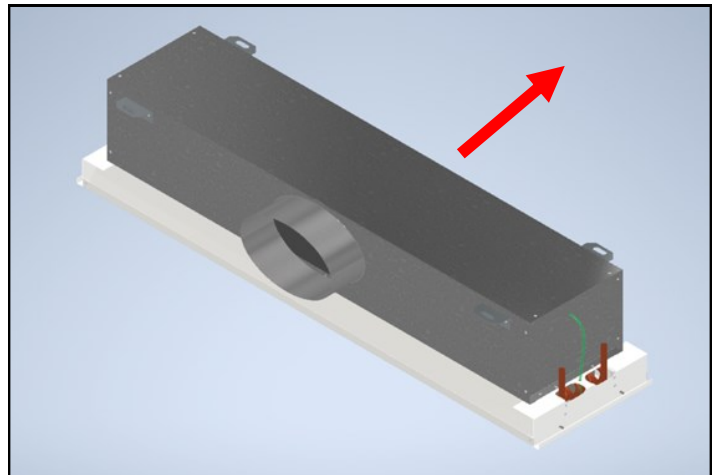
ACB55 MODEL

SIDE DUCT CONNECTION

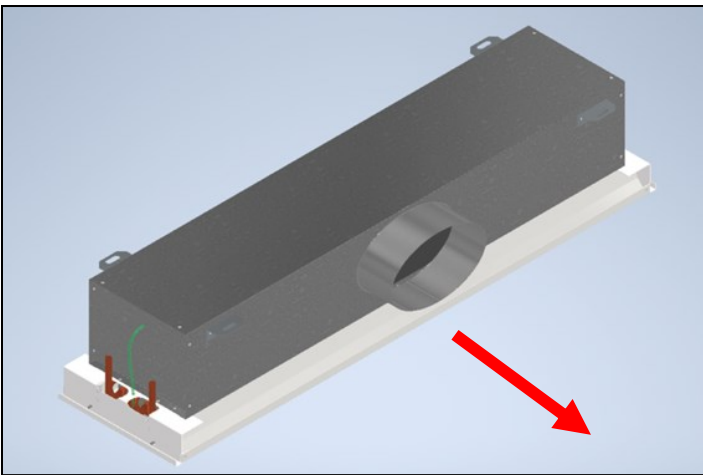
Available Connection Sizes: 4", 5", 6" Round, 8" Elliptical, 10" Oval



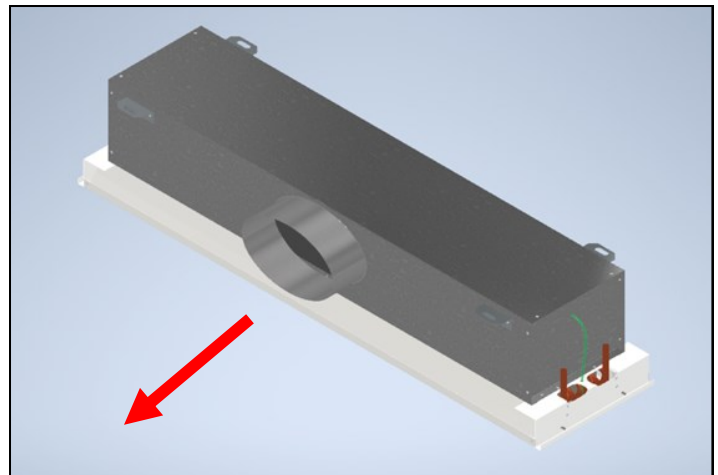
AIR: F
COIL: A



AIR: F
COIL: B



AIR: G
COIL: A



AIR: G
COIL: B

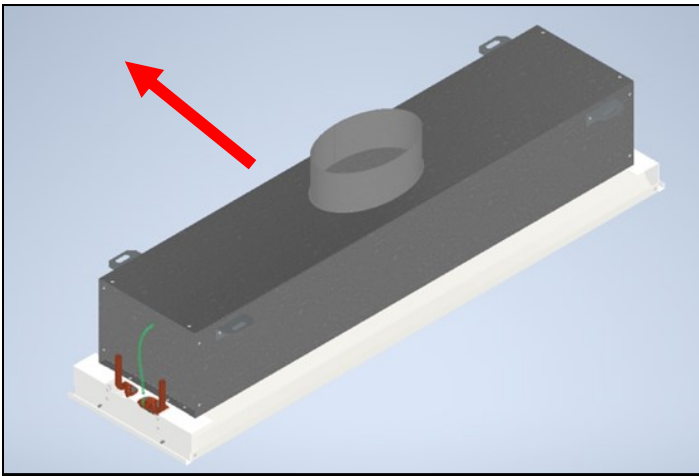
NOTE: **Red Arrow Indicates Direction of Supply Airflow**
Air Handling is represented by digit 14 in the model number
Coil Handling is represented by digit 16 in the model number

AIR AND COIL CONFIGURATION KEY

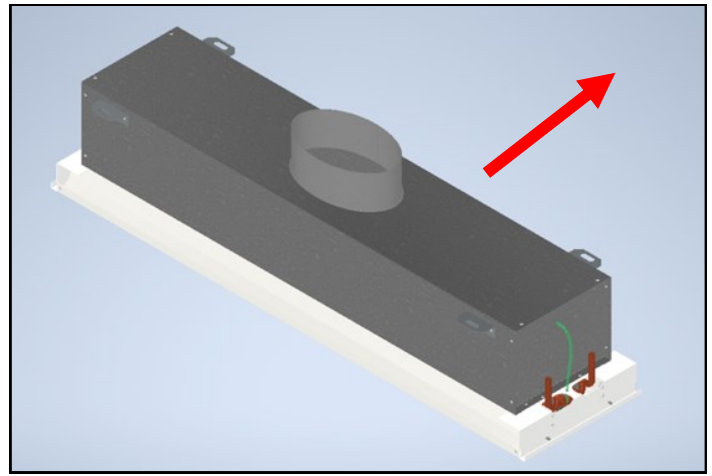
ACB55 MODEL

TOP DUCT CONNECTION

Available Connection Sizes: 4", 5", 6", 8" Round



AIR: H
COIL: A



AIR: H
COIL: B

NOTE: **Red Arrow Indicates Direction of Supply Airflow**
Air Handling is represented by digit 14 in the model number
Coil Handling is represented by digit 16 in the model number