



NOVUM®

BXH SERIES

HIGH EFFICIENCY

GAS-FIRED PROPELLER UNIT HEATER

REPLACEMENT PARTS CATALOG

INDEX	PAGE
BXH Series Unit Number Description	2
BXH Series 050-400 MBH Replacement Part Diagrams	3-5
BXH Series 050-400 MBH Replacement Parts	6-9
Gas Conversion Kits & Transformers	10
Field Installed Accessories & Misc.	11
Warranty Information - Return Goods	12

IMPORTANT

When ordering replacement parts,
please specify model and serial number.



Beacon Morris

260 North Elm Street, Westfield, MA 01085
TEL: (413) 562-5423

7555 Tranmere Drive, Mississauga Ontario L5S 1L4 Canada
TEL: (905) 670-5888
www.beacon-morris.com



NOVUM - BXH SERIES

HIGH EFFICIENCY GAS-FIRED UNIT HEATER

UNIT NUMBER DESCRIPTION

Digit	D	X	X	X		1	2	3	4	5	6	7	8	9	10	11	12	13	14	15	+
Item	Prefix					UT		CA		FT	FM	GT	AL	GC	SV	MT	MS	DL	AS		

(Internal Use Only)

1,2 - Unit Type [UT]

BXH - High Efficiency Gas-Fired Propeller Unit Heater

3,4,5 - Capacity [CA]

- 050** - 50,000 BTU/HR (14.6 kW)
- 100** - 100,000 BTU/HR (29.3 kW)
- 150** - 150,000 BTU/HR (43.9 kW)
- 200** - 200,000 BTU/HR (58.6 kW)
- 250** - 250,000 BTU/HR (73.2 kW)
- 300** - 300,000 BTU/HR (87.9 kW)
- 350** - 350,000 BTU/HR (102.5 kW)
- 400** - 400,000 BTU/HR (117.2 kW)

6 - Furnace Type [FT]

A - Right Side Access

7 - Heat Exchanger (Furnace) Material [FM]

1 - Stainless Steel Tubes with Aluminum and Brass Fins
Note: Stainless Steel Flue Collector is standard.

8 - Gas Type [GT]

N - Natural Gas
P - Propane Gas (LP)

9 - Altitude [AL]

S - 0-4,999 ft.
T - 5,000-11,999 ft.
Note: Installations over 2,000 ft. require gas input deration in the field. Refer to unit installation instructions.

10 - Direct Spark Gas Control [GC]

1 - Single Stage

11 - Supply Voltage [SV]

- 1** - 115/1/60 **5** - 230/3/60
- 2** - 208/1/60 **6** - 460/3/60
- 3** - 230/1/60 **7** - 575/3/60
- 4** - 208/3/60 **Z** - Special

Note: Supply Voltage [SV] 2-7 include field mounted step down transformer.

12 - Motor Type [MT]

1 - Open Drip Proof (Standard)

13 - Blower Motor Sizes [MS]

0 - Not applicable

14 - Design Level [DL]

A - First design level

15+ - Accessories [AS]

†FIELD INSTALLED (AS-_____)

†All Field Installed Accessories are to be entered as a separate line item using the catalog number which utilizes "11AS" as a prefix. i.e: G3 becomes 11AS-G3

A7 - High Pressure Regulator

- A7-1/2-1** - Regulator for PSI range 0.5-10
- A7-3/8-1** - Regulator for PSI range 10-20
- A7-5/16-1** - Regulator for PSI range 20-35

E9 - Condensate Neutralizer (Inline)

EW - Condensate Neutralizer (Wall Mounted)

G1 - 1-Stage Mercury Free Thermostat (Round)

- G2** - 1-Stage Mercury Free Thermostat w/Guard Kit
- G3** - 1-Stage Mercury Free Thermostat/Fan Switch
- G6** - Locking Thermostat Cover
- G9** - 1-Stage Mercury Free Heating Only Thermostat
- GW** - WiFi Thermostat TH8321WF1001/U

K8 - Condensate Pump

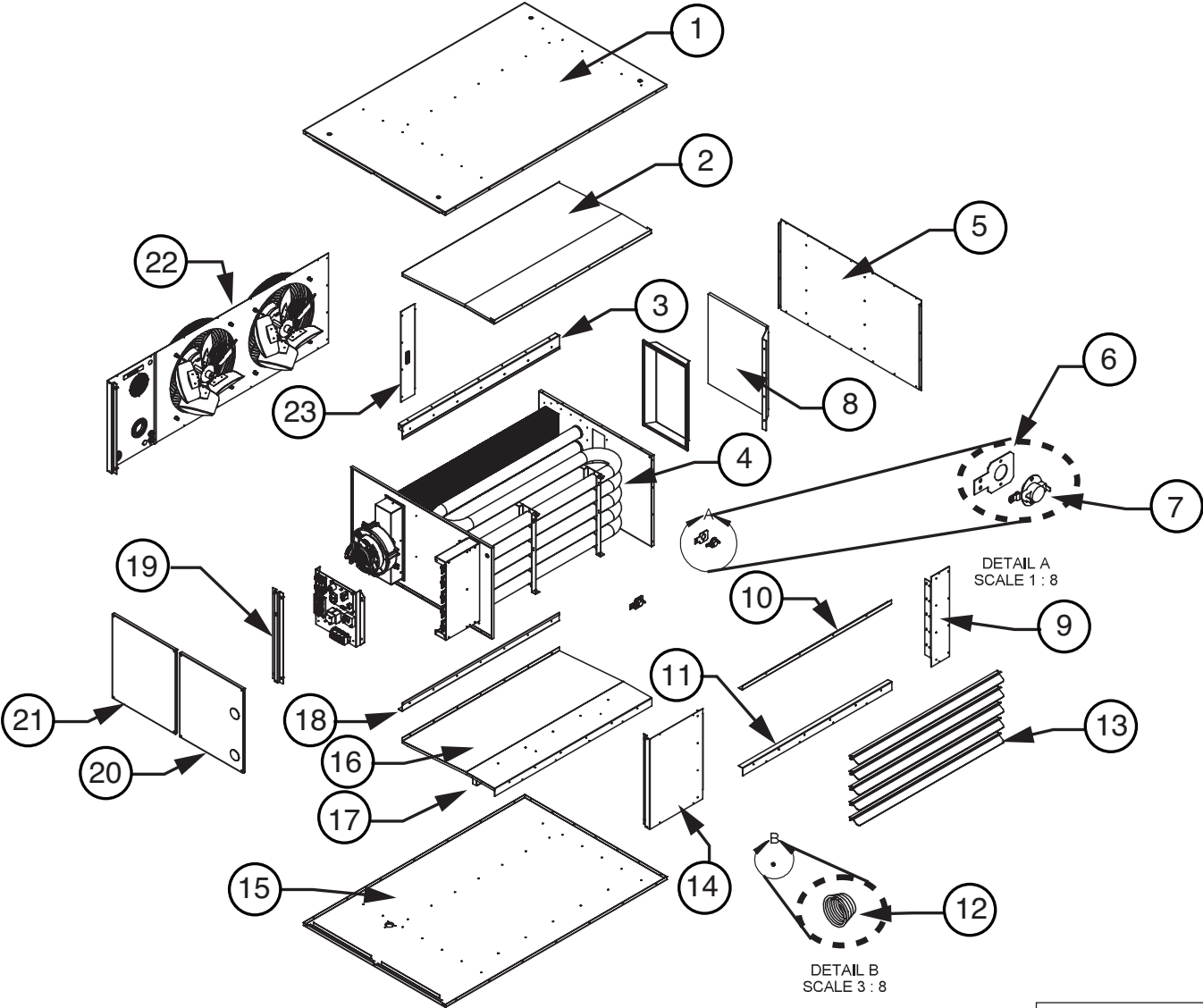
K9-001 - Condensate Pump Shelf

Y2 - 2" PVC Concentric Vent Kit

- Y3** - 3" PVC Concentric Vent Kit
- Y4** - 4" PVC Concentric Vent Kit

BXH SERIES 050-400 MBH REPLACEMENT PARTS

Figure 1 - Exploded View, Whole Unit



CAT-10754A

BXH SERIES 050-400 MBH REPLACEMENT PARTS

Figure 2 - Burner Assembly

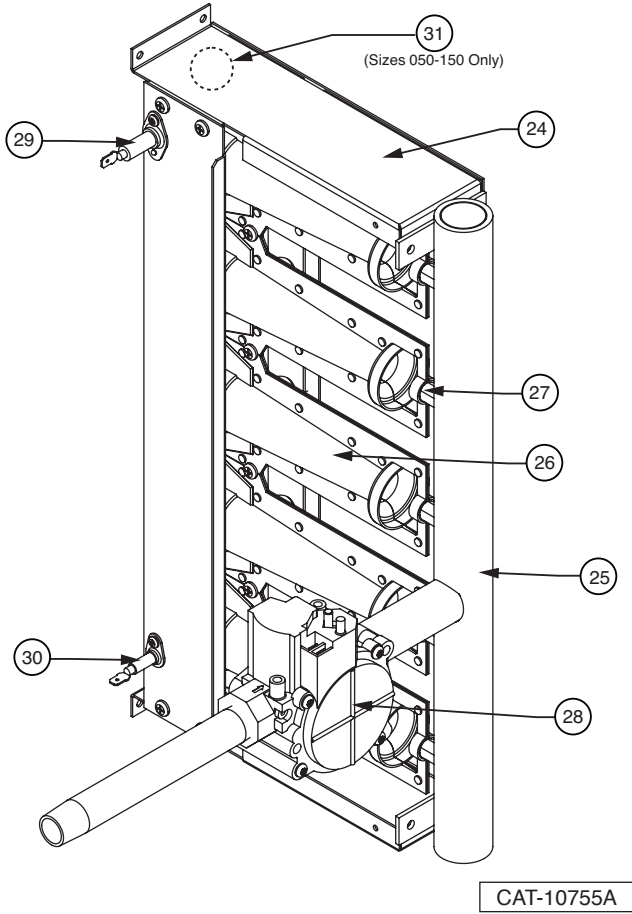


Figure 3 - Exploded View, Power Venter Assembly

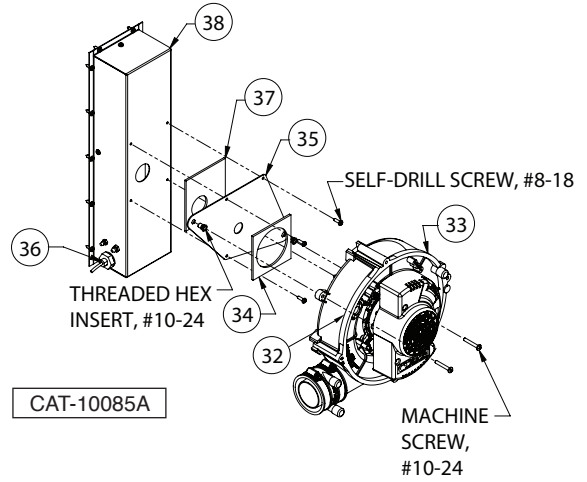


Figure 4 - Electrical Panel Components

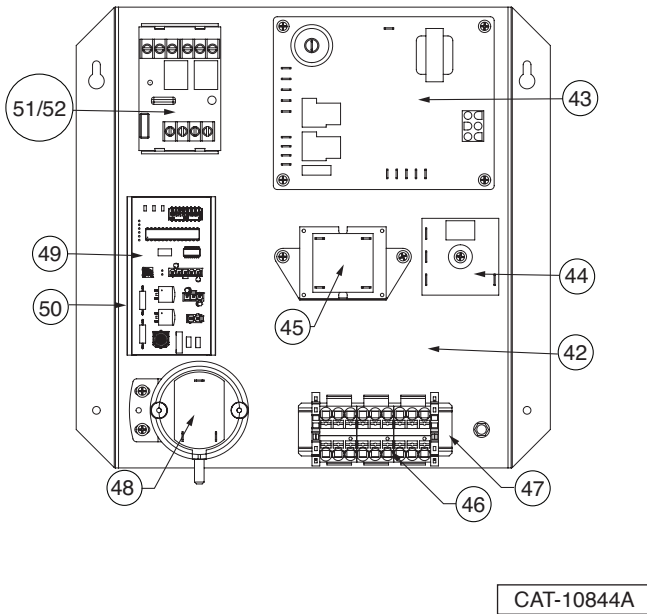
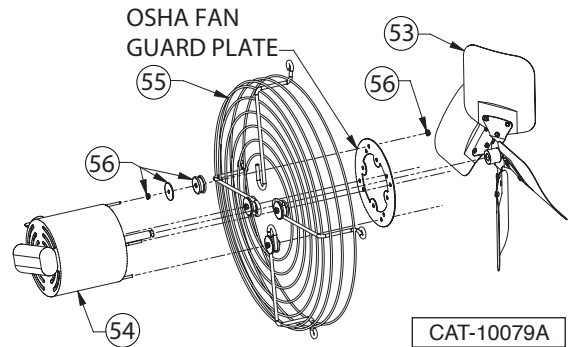


Figure 5 - Propeller Motor/Fan Assembly



BXH SERIES 050-400 MBH REPLACEMENT PARTS

Figure 6 - Vestibule Panel/Heat Exchanger Assembly

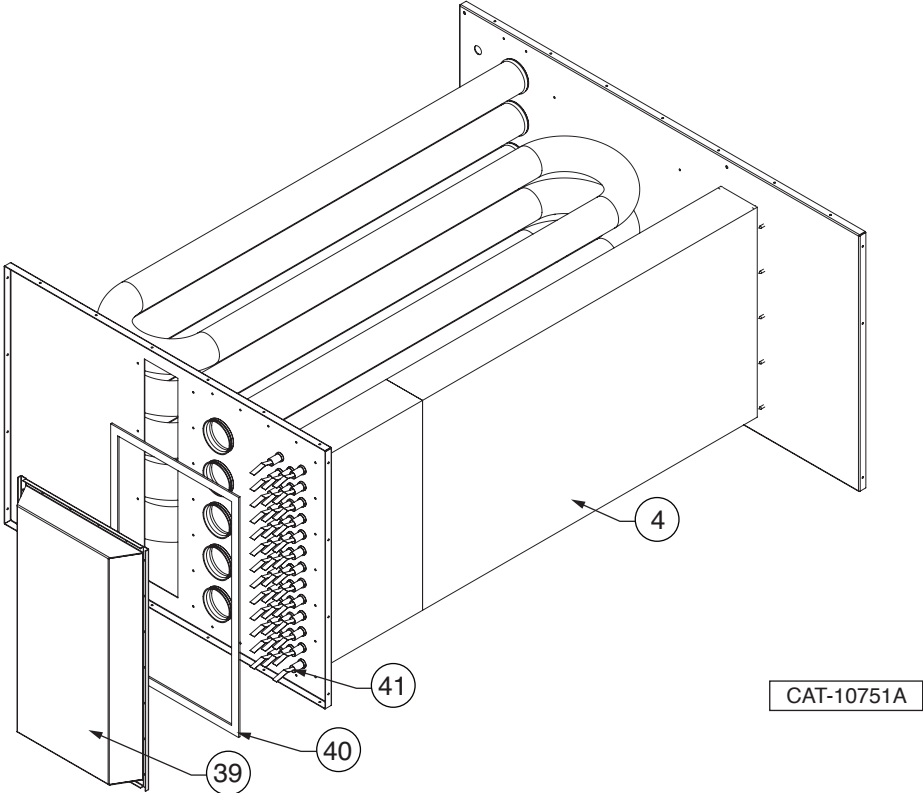
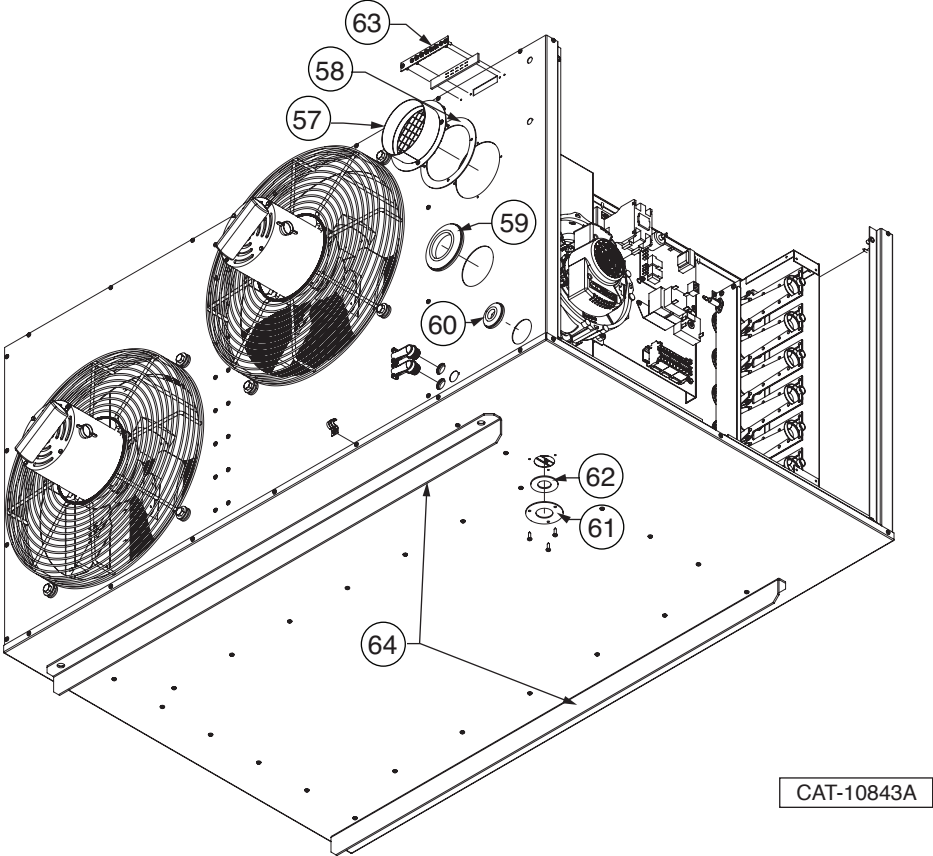


Figure 7 - Unit Connections



BXH SERIES 050-200 MBH REPLACEMENT PARTS

ITEM NO.	UNIT SIZE					
	50	100	150	200		
	NO. OF BURNERS, ORIFICES REQ'D PER MODEL					
	2	3	4	5		
	ITEM DESCRIPTION					
	PART NO.					
1	Top Jacket Panel					
2	Top Baffle					
3	Top Heat Exchanger Block-Off					
4	Vestibule Panel/Heat Exchanger Assembly ¹					
N/S	Heat Exchanger Screen					
5	Left Side Jacket Panel w/ Insulation					
6	High Limit Switch Bracket [Qty. Req'd per Capacity]					
7	High Limit Switch [Qty. Req'd per Capacity]					
8	Air Diverter					
9	Left Front Jacket Panel					
10	Top Front Façade Panel					
11	Bottom Front Façade Panel					
12	Louver Spring [Qty. Req'd per Capacity]					
13	Louvers [Qty. Req'd per Capacity]					
14	Right Front Jacket Panel					
15	Bottom Jacket Panel					
16	Bottom Baffle Panel w/ Insulation					
17	Bottom Baffle Support					
18	Bottom Panel Block-Off					
19	Partition Divide Strut					
20	Burner Access Panel					
21	Power Venter (Drafter) Access Panel					
22	Rear Jacket Panel					
23	Turn Cover Screen					
24	Manifold Bracket Sub-Assembly ²					
25	Manifold					
26	Inshot Burner					
27	Standard Orifice [Orifice Size]	Natural Gas	11501R10690-042 [#42]	11501R10690-037 [#37]	11501R10690-032 [#32]	11501R10690-031 [#31]
		Propane (LP) Gas	11501R10690-054 [#54]	11501R10690-052 [#52]	11501R10690-050 [#50]	11501R10690-049 [#49]
28	Direct Spark Gas Valve, Single Stage ³	Natural Gas	11J28R06892-001		N/A	
		Propane (LP) Gas	11J28R06892-002		N/A	
	Direct Spark Gas Valve, Two Stage ³	Natural Gas	N/A		11J28R06894-001	
		Propane (LP) Gas	N/A		11J28R06894-002	
N/S	Coupling to Manifold					
N/S	Nipple (between valve and coupling)					
N/S	Gas Inlet Pipe					
29	Flame Sensor [Qty. Req'd per Capacity]					
30	Spark Ignitor [Qty. Req'd per Capacity]					
31	Manual Rollout Safety Switch					
32	Flue Limit Switch					
33	Power Venter (Drafter) Assembly (includes gasket) ⁴					
34	Power Venter (Drafter) Gasket					
35	Power Venter (Drafter) Mounting Plate					
36	Float Switch					
37	Flue Collector Gasket					
38	Flue Collector (includes gaskets) ^{5,6}					
39	Turn Cover					
40	Turn Cover Gasket					
41	Turbulators [Qty. Req'd per Capacity]					

Notes:

1. Includes Turn Cover and Turbulators.
2. Does not include Flame Sensor & Ignitor; sold separately.
3. Size 150 - 400 Single Stage Units use a two-stage gas valve.
4. Does not include Flue Limit Switch (installs onto Power Venter); sold separately.
5. When replacing the Flue Collector, make sure the Flue Collector Box is sealed completely with factory supplied gasket.
6. Does not include Float Switch; sold separately.

LEGEND: N/S - Part Not Shown, N/A - Not Applicable

BXH SERIES 250-400 MBH REPLACEMENT PARTS

ITEM NO.	UNIT SIZE					
	250	300	350	400		
	NO. OF BURNERS, ORIFICES REQ'D PER MODEL					
	6	7	8	9		
	ITEM DESCRIPTION					
	PART NO.					
1	Top Jacket Panel					
	11251R10680-250					
2	Top Baffle					
	11507R10648-250	11507R10648-300	11507R10648-350	11507R10648-400		
3	Top Heat Exchanger Block-Off					
	11507R10669-150					
4	Vestibule Panel/Heat Exchanger Assembly ¹					
	11501R10693-250	11501R10693-300	11501R10693-350	11501R10693-400		
N/S	Heat Exchanger Screen					
	N/A					
5	Left Side Jacket Panel w/ Insulation					
	11251R10664-250		11251R10664-350			
6	High Limit Switch Bracket [Qty. Req'd per Capacity]					
	11252R10703-001 [2]					
7	High Limit Switch [Qty. Req'd per Capacity]					
	11J11R09359 [2]					
8	Air Diverter					
	11507R10677-250		11507R10677-350			
9	Left Front Jacket Panel					
	11251R10682-250	11251R10682-300	11251R10682-350	11251R10682-400		
10	Top Front Façade Panel					
	11251R10683-250	11251R10683-300	11251R10683-350	11251R10683-400		
11	Bottom Front Façade Panel					
	11251R10684-250	11251R10684-300	11251R10684-350	11251R10684-400		
12	Louver Spring [Qty. Req'd per Capacity]					
	11J26R01960 [6]	11J26R01960 [7]	11J26R01960 [8]	11J26R01960 [9]		
13	Louvers [Qty. Req'd per Capacity]					
	11257R10685-002 [6]	11257R10685-002 [7]	11257R10685-002 [8]	11257R10685-002 [9]		
14	Right Front Jacket Panel					
	11251R10786-250	11251R10786-300	11251R10786-350	11251R10786-400		
15	Bottom Jacket Panel					
	11251R10663-250					
16	Bottom Baffle Panel w/ Insulation					
	11507R10649-250	11507R10735-300	11507R10649-350	11507R10649-400		
17	Bottom Baffle Support					
	11507R10722-250	11507R10722-300	11507R10722-350	11507R10722-400		
18	Bottom Panel Block-Off					
	N/A	11507R10668-300	N/A			
19	Partition Divide Strut					
	11251R10785-250		11251R10785-350			
20	Burner Access Panel					
	11258R10695-250		11258R10695-350			
21	Power Venter (Drafter) Access Panel					
	11258R10666-250		11258R10796-350			
22	Rear Jacket Panel					
	11251R10725-250	11251R10725-300	11251R10725-350	11251R10725-400		
23	Turn Cover Screen					
	11501R10679-250					
24	Manifold Bracket Sub-Assembly ²					
	11503R10686-250	11503R10686-300	11503R10686-350	11503R10686-400		
25	Manifold					
	11503R09190-300	11503R09190-350	11503R09190-400	11503R10671-400		
26	Inshot Burner					
	11J37R08258-001	11J37R08258-001	11J37R08258-001	11J37R08258-001		
27	Standard Orifice [Orifice Size]	Natural Gas	11501R10690-032 [#32]	11501R10690-031 [#31]	11501R10690-031 [#31]	11501R10690-031 [#31]
		Propane (LP) Gas	11501R10690-049 [#49]	11501R10690-049 [#49]	11501R10690-049 [#49]	11501R10690-049 [#49]
28	Direct Spark Gas Valve, Single Stage ³	Natural Gas	N/A			
		Propane (LP) Gas	N/A			
	Direct Spark Gas Valve, Two Stage ³	Natural Gas	11J28R06895-001			
		Propane (LP) Gas	11J28R06895-002			
N/S	Coupling to Manifold					
	N/A					
N/S	Nipple (between valve and coupling)					
	N/A					
N/S	Gas Inlet Pipe					
	11505R10971-250	11505R10971-300	11505R10971-350	11505R10971-400		
29	Flame Sensor [Qty. Req'd per Capacity]					
	11J38R06890-003					
30	Spark Ignitor [Qty. Req'd per Capacity]					
	11J38R06891-001					
31	Manual Rollout Safety Switch					
	N/A					
32	Flue Limit Switch					
	11J11R09594-002					
33	Power Venter (Drafter) Assembly (includes gasket) ⁴					
	11J35R09586-004					
34	Power Venter (Drafter) Gasket					
	11265R10026-010					
35	Power Venter (Drafter) Mounting Plate					
	11507R09994-300		11507R10537-350	11507R09994-400		
36	Float Switch					
	11J11R09753-001					
37	Flue Collector Gasket					
	11265R10026-023					
38	Flue Collector (includes gaskets) ^{5,6}					
	11507R09722-300		11507R09722-400			
39	Turn Cover					
	11507R10652-250		11507R10652-350			
40	Turn Cover Gasket					
	11265R10691-250		11265R10691-350			
41	Turbulators [Qty. Req'd per Capacity]					
	11501R10441-001 [56]		11501R10441-001 [77]			

Notes:

1. Includes Turn Cover and Turbulators.
2. Does not include Flame Sensor & Ignitor; sold separately.
3. Size 150 - 400 Single Stage Units use a two-stage gas valve.
4. Does not include Flue Limit Switch (installs onto Power Venter); sold separately.
5. When replacing the Flue Collector, make sure the Flue Collector Box is sealed completely with factory supplied gasket.
6. Does not include Float Switch; sold separately.

LEGEND: N/S - Part Not Shown, N/A - Not Applicable

BXH SERIES 050-200 MBH REPLACEMENT PARTS

ITEM NO.	UNIT SIZE		50	100	150	200
	ITEM DESCRIPTION		PART NO.			
42	Electrical Panel		11257R10702-001			
43	Ignition Control Board		11J28R06881			
44	Time Delay Relay		N/A		11J10R10661-001	
45	Transformer, 50VA 115/24V ¹		11J14R03245-012			
46	Distribution Block		11260R10970-001			
47	Distribution Block Bracket		11509R10767-009			
48	Air Pressure Switch [label color]	Std Alt (0-4,999 ft)	11J11R10706-130 [lt. brn]	11J11R10706-160 [red]	11J11R10706-290 [pnk]	11J11R10706-190 [grn]
		High Alt (5,000 ft+)	11J11R10706-120 [yel]	11J11R10706-150 [orngr]	11J11R10706-280 [prpl]	11J11R10706-180 [lt. blu]
49	Inducer Speed Control Board		11J11R10633-001			
50	Inducer Speed Control Board Bracket		11509R10769-010			
51	Fan Relay, 24/115V with Bracket		11J10R03233-003	11J10R03233-001	11J10R03233-003	
52	Contactor, 24/115V		N/A			
53	Fan Blade [Qty. Req'd per Capacity]		11J34R06999-017 [2]	11J34R10162-000 [1]	11J34R10162-002 [2]	11J34R10162-000 [2]
54	Fan Motor, Open Drip Proof [Qty. Req'd per Capacity]		11J31R10194-001 [2]	11J31R09585-001 [1]	11J31R09585-001 [2]	
55	OSHA Fan Guard (includes OSHA Guard Plate) [Qty. Req'd per Capacity] ²		11J32R04884 [2]	11J32R04840 [1]	11J32R04840 [2]	
56	Fan/Guard/Motor Mount Hardware Kit [Qty. Req'd per Capacity]		11253R10334-002 [2]	11253R10334-002 [1]	11253R10334-002 [2]	
57	Air Inlet Collar (includes gasket)		11507R10720-050		11507R10720-150	11507R10720-200
58	Air Inlet Collar Gasket		11265R10721-050		11265R10721-150	
59	Flue Pipe Grommet		11J07R02872-019			
60	Gas Pipe Grommet		11J07R02872-001			
61	Condensate Connection Cover (includes gasket)		11251R10700-001			
62	Condensate Connection Gasket		11J24R10833-024			
63	Terminal Block (includes gasket)		11J11R04609			
N/S	Ignition Cable		11J28R06971-001			
N/S	Hanging Bracket [Qty. Req'd]		N/A			
N/S	Condensate Trap Assembly		11264R10822-001			
N/S	Flue Pipe Adaptor		N/A		11J40R10104-006	11J40R10104-007
N/S	Flue Drainage Kit		N/A			
N/S	Pneumatic Tubing, 3/16" ID, 3 ft. length (Pressure Switch to Flue Collector)		11265R11026-002			
N/S	Pneumatic Tubing, 3/16" ID, 2 ft. length (Flue Pipe Coupling to Flue Collector)		11265R11026-001			

Notes:

1. See Transformers table for step down transformers used with Supply Voltage options 2-7.
2. Size 50 units do not have an OSHA Guard Plate. All other sizes include OSHA Guard Plate.

LEGEND: N/S - Part Not Shown, N/A - Not Applicable

BXH SERIES 250-400 MBH REPLACEMENT PARTS

ITEM NO.	UNIT SIZE		250	300	350	400
	ITEM DESCRIPTION		PART NO.			
42	Electrical Panel		11257R10702-001			
43	Ignition Control Board		11J28R06881			
44	Time Delay Relay		11J10R10661-001			
45	Transformer, 50VA 115/24V ¹		11J14R03245-012			
46	Distribution Block		11260R10970-001			
47	Distribution Block Bracket		11509R10767-009			
48	Air Pressure Switch [label color]	Std Alt (0-4,999 ft)	11J11R10706-230 [gry]	11J11R10706-200 [dk. brn]	11J11R10706-180 [lt. blu]	11J11R10706-190 [grn]
		High Alt (5,000 ft+)	11J11R10706-220 [vndr/wht]	11J11R10706-190 [grn]	11J11R10706-170 [dk. blu]	11J11R10706-180 [lt. blu]
49	Inducer Speed Control Board		11J11R10633-001			
50	Inducer Speed Control Board Bracket		11509R10769-010			
51	Fan Relay, 24/115V with Bracket		N/A			
52	Contactor, 24/115V		11J10R06276-019			
53	Fan Blade [Qty. Req'd per Capacity]		11J34R10784-001 [2]	11J34R10162-001 [2]	11J34R10162-003 [2]	
54	Fan Motor, Open Drip Proof [Qty. Req'd per Capacity]		11J31R09585-002 [2]			
55	OSHA Fan Guard (includes OSHA Guard Plate) [Qty. Req'd per Capacity] ²		11J32R04840 [2]		11J32R08289 [2]	
56	Fan/Guard/Motor Mount Hardware Kit [Qty. Req'd per Capacity]		11253R10334-002 [2]			
57	Air Inlet Collar (includes gasket)		11507R10720-200			
58	Air Inlet Collar Gasket		11265R10721-150			
59	Flue Pipe Grommet		11J07R02872-019		11J07R02872-010	
60	Gas Pipe Grommet		11J07R02872-002			
61	Condensate Connection Cover (includes gasket)		11251R10700-001			
62	Condensate Connection Gasket		11J24R10833-024			
63	Terminal Block (includes gasket)		11J11R04609			
N/S	Ignition Cable		11J28R06971-001			
N/S	Hanging Bracket [Qty. Req'd]		11252R10783-001 [2]			
N/S	Condensate Trap Assembly		11264R10822-001			
N/S	Flue Pipe Adaptor		11J40R10104-007		11J40R10133-007	
N/S	Flue Drainage Kit		N/A		11257R10163-400	
N/S	Pneumatic Tubing, 3/16" ID, 3 ft. length (Pressure Switch to Flue Collector)		11265R11026-002			
N/S	Pneumatic Tubing, 3/16" ID, 2 ft. length (Flue Pipe Coupling to Flue Collector)		11265R11026-001			

Notes:

1. See Transformers table for step down transformers used with Supply Voltage options 2-7.
2. Size 50 units do not have an OSHA Guard Plate. All other sizes include OSHA Guard Plate.

LEGEND: N/S - Part Not Shown, N/A - Not Applicable

BXH SERIES 050-400 MBH REPLACEMENT PARTS GAS CONVERSION KITS & TRANSFORMERS

GAS CONVERSION KITS

From Natural Gas (NG) to Propane (LP)		From Propane (LP) to Natural Gas (NG)	
Unit Size	Part Number	Unit Size	Part Number
050	11261R10749-001	050	11261R10750-001
100	11261R10749-002	100	11261R10750-002
150	11261R10749-003	150	11261R10750-003
200-400	11261R10749-004	200, 300-400	11261R10750-004
		250	11261R10750-005

TRANSFORMERS

UNIT SIZE	050	100	150	200
DESCRIPTION	PART NO.			
115/24, 50VA Transformer	11J14R03245-012			
208 (1 Phase)/115, Transformer	11J14R02832-013 ²	11J14R02832-013 ²	11J14R02832-013 ²	11J14R02832-013 ²
230 (1 Phase)/115, Transformer	11J14R02832-004 ¹	11J14R02832-013 ²	11J14R02832-013 ²	11J14R02832-013 ²
208 (3 Phase)/115, Transformer	11J14R02832-013 ²	11J14R02832-013 ²	11J14R02832-013 ²	11J14R02832-013 ²
230 (3 Phase)/115, Transformer	11J14R02832-004 ¹	11J14R02832-013 ²	11J14R02832-013 ²	11J14R02832-013 ²
460/115, Transformer	11J14R02832-004 ¹	11J14R02832-012 ²	11J14R02832-012 ²	11J14R02832-012 ²
575/115, Transformer	11J14R02832-007 ¹	11J14R02832-014 ²	11J14R02832-014 ²	11J14R02832-014 ²

Notes:

1. Transformer is 1,000 VA
2. Transformer is 2,000 VA
3. Transformer is 3,000 VA

UNIT SIZE	250	300	350	400
DESCRIPTION	PART NO.			
115/24, 50VA Transformer	11J14R03245-012			
208 (1 Phase)/115, Transformer	11J14R02832-018 ³	11J14R02832-018 ³	11J14R02832-018 ³	11J14R02832-018 ³
230 (1 Phase)/115, Transformer	11J14R02832-018 ³	11J14R02832-018 ³	11J14R02832-018 ³	11J14R02832-018 ³
208 (3 Phase)/115, Transformer	11J14R02832-018 ³	11J14R02832-018 ³	11J14R02832-018 ³	11J14R02832-018 ³
230 (3 Phase)/115, Transformer	11J14R02832-018 ³	11J14R02832-018 ³	11J14R02832-018 ³	11J14R02832-018 ³
460/115, Transformer	11J14R02832-019 ³	11J14R02832-019 ³	11J14R02832-019 ³	11J14R02832-019 ³
575/115, Transformer	11J14R02832-020 ³	11J14R02832-020 ³	11J14R02832-020 ³	11J14R02832-020 ³

Notes:

1. Transformer is 1,000 VA
2. Transformer is 2,000 VA
3. Transformer is 3,000 VA

BXH SERIES 050-400 MBH REPLACEMENT PARTS

FIELD INSTALLED ACCESSORIES & MISC.

DESCRIPTION [ACCESSORY OPTION NO.]	PART NO.
Pressure Regulator (0.5 to 10 PSI) Natural Gas [A7-1/2-1]	11AS-A7-1/2-1
Pressure Regulator (10 to 20 PSI) Natural Gas [A7-3/8-1]	11AS-A7-3/8-1
Pressure Regulator (20 to 35 PSI) Natural Gas [A7-5/16-1]	11AS-A7-5/16-1
Thermostats (Mercury Free) – 1 Stage (Round) [G1]	11AS-G1
– 1 Stage (Round) w/ Guard [G2]	11AS-G2
– 1 Stage w/ Fan Switch [G3]	11AS-G3
– 2 Stage w/ Fan Switch [G5]	11AS-G5
– 1 Stage Heating Only [G9]	11AS-G9
– 1 WiFi Thermostat TH8321WF1001/U [GW]	11AS-GW
Locking Thermostat Guard/Cover [G6]	11AS-G6
Condensate Neutralizer - Inline (050-200 MBH) [E9]	11AS-E9-1
Condensate Neutralizer - Inline (250-400 MBH) [E9]	11AS-E9-2
Condensate Neutralizer - Wall Mounted (050-200 MBH) [EW]	11AS-EW-1
Condensate Neutralizer - Wall Mounted (250-400 MBH) [EW]	11AS-EW-2
Condensate Pump [K8]	11AS-K8
Condensate Pump Shelf [K9-001]	11AS-K9-001
2" PVC Concentric Vent Kit (050-100 MBH) [Y2]	11AS-Y2
3" PVC Concentric Vent Kit (150 MBH) [Y3]	11AS-Y3
4" PVC Concentric Vent Kit (200-400 MBH) [Y4]	11AS-Y4
High Temp (RTV) Sealant - 2.8 oz. tube	11H03R03612-002

IMPORTANT WARRANTY INFORMATION

If you are ordering a replacement part for a unit which you believe to be under warranty, the process is as follows:

- Provide Beacon Morris with a description of the part or assembly needed and the model and serial number of the unit which experienced failure. If there is a question about the warranty, we can answer it at this point. Consultation with our Technical Service Dept. may be required to determine the correct replacement parts, and you will be given a call log number for reference.
- Fill out Beacon Morris's Return Goods Authorization (RGA) Request Form, available on SalesAssistant.com. Submit the form to Beacon Morris along with an order for the necessary parts. Be sure to include the call log number on both the form and the parts order.
- Once your order and completed RGA form are received, Beacon Morris will enter the order and issue you an RGA, if applicable, with instructions on how and where to send the defective parts.
- An invoice will be generated and mailed. The invoice may list the call log number, RGA number and state "a RGA has been issued." Once the defective item has been returned and confirmed as "defective in warranty," a credit will be issued for the original invoice amount.
- Returned goods must ship back within 30 days from date of RGA. If we do not receive the parts within 30 days, the RGA will be voided. Parts returned and found to be valid under warranty will be credited for parts only. If our inspection reveals that the parts returned are in a non-warranty condition, no credit will be issued. Freight is not covered under warranty.

In order to ensure the orderly processing of your warranty claim, it is **MANDATORY** that certain paperwork accompany any and all goods returned to Beacon Morris. It is also mandatory that goods be sent to the proper location.

In order to ensure proper handling of these goods, Beacon Morris **MUST** formally authorize the return of material to our various facilities under any circumstance. Any material returned without authorization will not be accepted.

In order to ensure that your properly authorized returns are accepted at our plant, you **MUST** clearly mark any and all shipping papers with an RGA number; Beacon Morris will not accept shipments that do not clearly show an RGA number on the outside of the box or crate!

**All returns to be shipped Freight Prepaid.
Collect Shipments will not be accepted.**

CONSULT OUR CUSTOMER SERVICE DEPT. FOR ANY
REPLACEMENT PARTS NOT LISTED IN THIS PUBLICATION.
LIMITED AVAILABILITY ON CERTAIN OBSOLETE EQUIPMENT.
TEL. 413-562-5423 www.beaconmorris.com

LIMITED WARRANTY

The product described in this catalog are warranted by Beacon Morris, A Mestek Co. to be free from defects in material and workmanship for a period of one (1) year from the date of shipment from Beacon Morris's plant.

Beacon Morris will repair or replace, at its option, any components which, upon inspection, it finds to be defective, provided that the unit has been operated within its listed capacity, has been installed in accordance with the furnished instructions, has not been misused or subject to negligence and has received reasonable and necessary maintenance. This warranty does not cover labor costs or other cost incurred in repairing, removing, installing, servicing or handling of parts or complete products.

Beacon Morris will in no event be liable for incidental or consequential damages of any kind whatsoever.

The buyer must request written permission from Beacon Morris to return defective components and then must send them with all transportation charges prepaid to the plant designated in the written permission.

This warranty is extended only to the original purchaser from Beacon Morris.



Beacon Morris

260 North Elm Street, Westfield, MA 01085

TEL: (413) 562-5423

7555 Tranmere Drive, Mississauga Ontario L5S 1L4 Canada

TEL: (905) 670-5888

www.beacon-morris.com

 A MESTEK COMPANY