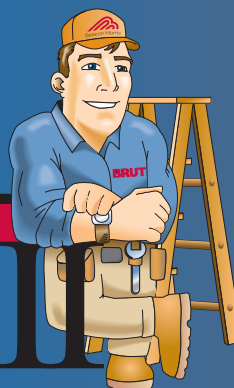




THE BRUT II



MODEL "BRT"
GAS-FIRED UNIT HEATER

**INDUSTRIAL, COMMERCIAL
AND RESIDENTIAL
GARAGE CERTIFIED**

ETL LISTED

**DIRECT
SPARK IGNITION**

RELIABLE BURNER IGNITION

**TWO
STAGE GAS**

AVAILABLE ON SIZES 60-120

**TUBULAR
HEAT EXCHANGER**

ALUMINIZED STEEL

Stainless Steel Option Available

**SINGLE
ORIFICE BURNER**

ONE BURNER TO SERVICE
ONE BURNER TO CONVERT
321 STAINLESS STEEL BURNER BOX

DUAL VENTING

READY FOR STANDARD OR
SEPARATED COMBUSTION ALL
IN ONE UNIT

**GAS CONVERSION
KIT INCLUDED**

STANDARD WITH EVERY UNIT

PERFORMANCE AND DIMENSIONAL DATA

| UNIT CAPACITY (MBH) | 30 | 45 | 60 | 75 | 90 | 105 | 120 |
|--|-------------------|-------------------|-------------------|-------------------|------------------|-------------------|-------------------|
| PERFORMANCE DATA† | | | | | | | |
| Input - BTU/Hr (kW) | 30,000 (8.8) | 45,000 (13.2) | 60,000 (17.6) | 75,000 (22.0) | 90,000 (26.4) | 105,000 (30.8) | 120,000 (35.2) |
| Output - BTU/Hr (kW) | 24,900 (7.2) | 37,350 (10.9) | 49,800 (14.5) | 61,500 (18.0) | 73,800 (21.6) | 86,100 (25.2) | 98,400 (28.8) |
| Thermal Efficiency - % | 83 | 83 | 83 | 82 | 82 | 82 | 82 |
| Free Air Delivery - CFM (cu. m/s) | 370 (.175) | 550 (.260) | 740 (.349) | 920 (.434) | 1,100 (.519) | 1,300 (.614) | 1,475 (.696) |
| Air Temperature Rise - °F (°C) | 60 (15) | 60 (15) | 60 (15) | 60 (15) | 60 (15) | 60 (15) | 60 (15) |
| Full Load Amps at 120V | 3.2 | 3.2 | 4.1 | 4.1 | 6.4 | 6.4 | 6.4 |
| Minimum Circuit Ampacity at 120V | 3.7 | 3.7 | 4.8 | 4.8 | 7.5 | 7.5 | 7.5 |
| MOTOR DATA: | | | | | | | |
| Motor HP | 1/20 | 1/20 | 1/12 | 1/12 | 1/10 | 1/10 | 1/10 |
| Motor (kW) | (0.04) | (0.04) | (0.06) | (0.06) | (0.075) | (0.075) | (0.075) |
| Motor Type ODP†† | SP | SP | SP | SP | SP | SP | SP |
| RPM | 1650 | 1650 | 1050 | 1050 | 1050 | 1050 | 1050 |
| Motor Amps @ 115V | 1.9 | 1.9 | 2.6 | 2.6 | 4.2 | 4.2 | 4.2 |
| DIMENSIONAL DATA - Inches (mm) | | | | | | | |
| "A" Jacket Height | 12-3/8 (314) | 12-3/8 (314) | 15-7/8 (403) | 15-7/8 (403) | 22-5/8 (574) | 22-5/8 (574) | 22-5/8 (574) |
| "B" Overall Height | 13-1/4 (337) | 13-1/4 (337) | 16-13/16 (427) | 16-13/16 (427) | 23-9/16 (598) | 23-9/16 (598) | 23-9/16 (598) |
| "C" Overall Depth | 25-7/8 (632) | 25-7/8 (632) | 26-3/16 (665) | 26-3/16 (665) | 26-3/8 (670) | 26-3/8 (670) | 26-3/8 (670) |
| "D1" Center Line Height of Flue* | 8-1/2 (216) | 8-1/2 (216) | 10-3/8 (263) | 10-3/8 (263) | 13-5/8 (346) | 13-5/8 (346) | 13-5/8 (346) |
| "D2" Center Line Height of Air Intake | 8-1/2 (216) | 8-1/2 (216) | 8 (203) | 8 (203) | 8-5/8 (219) | 8-5/8 (219) | 8-5/8 (219) |
| "E" Fan Diameter | 10 (254) | 10 (254) | 14 (356) | 14 (356) | 16 (406) | 16 (406) | 16 (406) |
| "F" Discharge Opening Height | 10-13/16 (275) | 10-13/16 (275) | 14-7/16 (367) | 14-7/16 (367) | 21-3/16 (538) | 21-3/16 (538) | 21-3/16 (538) |
| "G" Vent Connection Diameter | 4 (102) | 4 (102) | 4 (102) | 4 (102) | 4 (102) | 4 (102) | 4 (102) |
| "H1" Center Line of Flue Connection From Side | 7-1/4 (184) | 7-1/4 (184) | 7-1/4 (184) | 7-1/4 (184) | 7-3/4 (197) | 7-3/4 (197) | 7-1/4 (184) |
| "H2" Center Line of Air Intake From Side | 2-3/4 (70) | 2-3/4 (70) | 2-3/4 (70) | 2-3/4 (70) | 3-1/2 (89) | 3-1/2 (89) | 3-1/2 (89) |
| VENT SIZE REQUIREMENTS - STANDARD COMBUSTION | | | | | | | |
| Category III Horizontal - Inches (mm) | 4 (102) | 4 (102) | 4 (102) | 4 (102) | 4 (102) | 4 (102) | 4 (102) |
| Category I & III Vertical - Inches (mm) | 4 (102) | 4 (102) | 4 (102) | 4 (102) | 4 (102) | 4 (102) | 4 (102) |
| VENT SIZE REQUIREMENTS - SEPARATED COMBUSTION | | | | | | | |
| Exhaust Diameter - Inches (mm) | 4 (102) | 4 (102) | 4 (102) | 4 (102) | 5 (127) | 5 (127) | 5 (127) |
| Intake Air Diameter - Inches (mm) | 4 (102) | 4 (102) | 4 (102) | 4 (102) | 5 (127) | 5 (127) | 5 (127) |
| Unit Weight - Lbs (kgs) | 60 (27) | 65 (29) | 80 (36) | 85 (39) | 95 (43) | 105 (48) | 110 (50) |
| Shipping Weight - Lbs (kgs) | 70 (32) | 75 (34) | 90 (41) | 95 (43) | 110 (50) | 115 (52) | 120 (54) |

*For all installations, the flue collar is included with the unit and should be field installed per the instructions included with the unit.

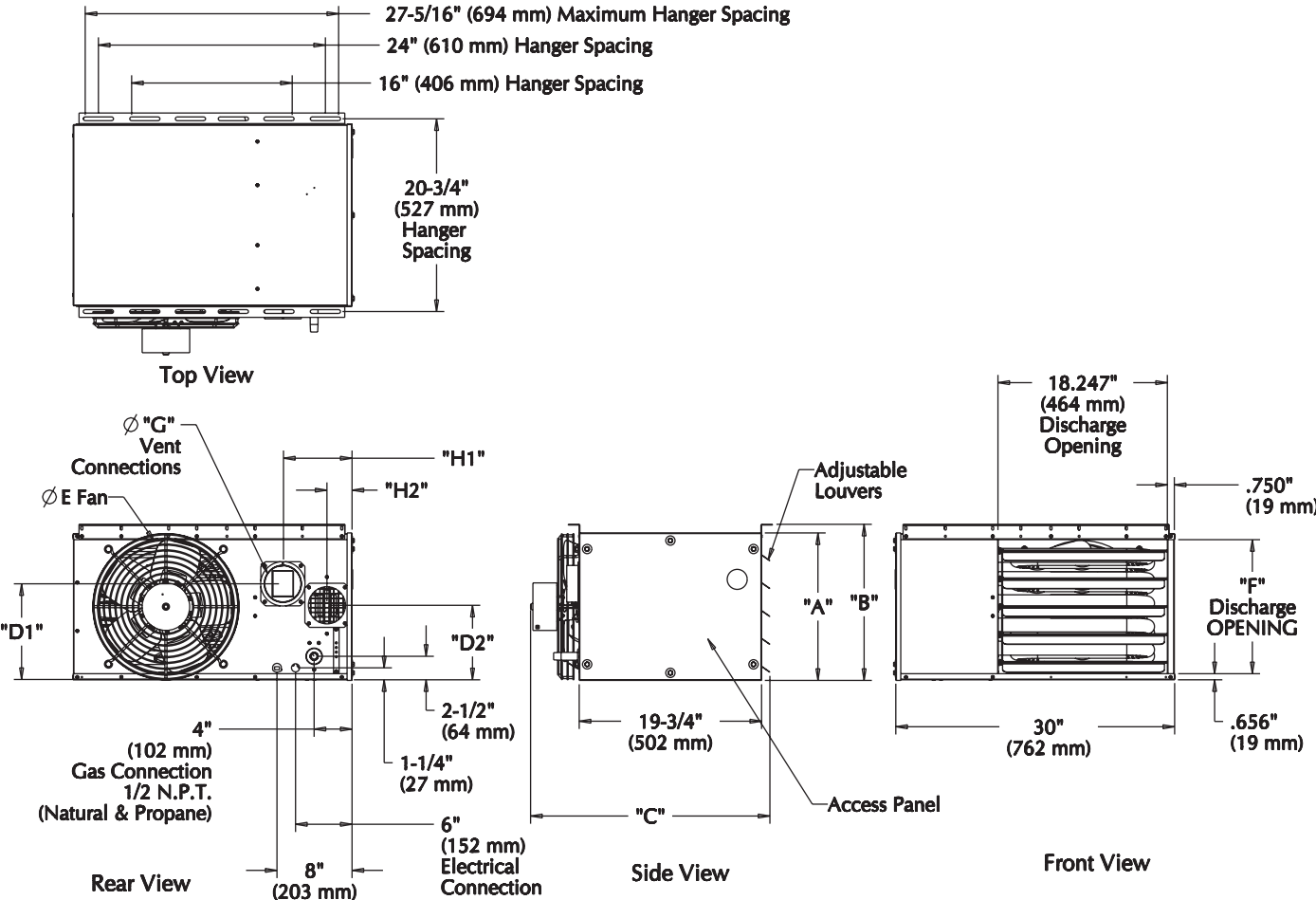
† Ratings shown are for unit installations at elevations between 0 and 2,000 feet (0 to 610m). For unit installations in USA above 2,000 feet (610m), the unit input must be field derated 4% for each 1,000 feet (305m) above sea level; refer to local codes, or in absence of local codes, refer to the latest edition of the National Fuel Gas Code, ANSI Standard Z223.1 (NFPA No. 54).

For installations in Canada, any reference to deration at altitudes in excess of 2,000 feet (610m) are to be ignored. At altitudes of 2,000 feet to 4,500 feet (610 to 1372m), the unit must be field derated and be so marked in accordance with the ETL certification. See unit installation, operation and maintenance manual for deration information.

†† LEGEND: ODP = OPEN DRIP PROOF SP = SHADED POLE



DIMENSIONAL DATA



D8597

DIMENSIONS - XXX STANDARD UNITS
DIMENSIONS IN PARENTHESIS (XXX) MILLIMETERS



PRODUCT FEATURES



STANDARD FEATURES

- ▶ Standard or Separated Combustion All-In-One Units
- ▶ 82+% Thermal Efficiency
- ▶ Redundant Single Stage Gas Valve
- ▶ Residential Certification: For Use as a Garage Utility Heater
- ▶ 20GA Aluminized Heat Exchanger
- ▶ 120/24V Control Transformer
- ▶ 115/1/60 Fan Motor with Internal Overload Protection
- ▶ Power Vented
- ▶ Direct Spark Ignition
- ▶ 20GA Baked Enamel Cabinet
- ▶ 10 Year Heat Exchanger Warranty
- ▶ OSHA Fan Guard
- ▶ Right Hand Control Access
 - Field Convertible to Left Hand
- ▶ High Limit Switch
- ▶ Air Pressure Switch
- ▶ Natural or Propane Gas
- ▶ Gas Conversion Kit Included
- ▶ Easy Access Control Panel
- ▶ 321 Stainless Steel Burner Box

OPTIONAL EQUIPMENT

- ▶ 409 Stainless Steel Heat Exchanger
- ▶ Two Stage Gas Control (Sizes 60-120 Only)
- ▶ Supply Voltage (Field Mounted Transformers):
 - 208/1/60
 - 230/1/60
 - 208/3/60
 - 230/3/60
 - 460/3/60
 - 575/3/60
- ▶ Totally Enclosed Motors (Sizes 60-120 Only)
- ▶ 409 Stainless Steel Flue Collector
- ▶ Pressure Regulator (1/2 – 35 psi)
- ▶ Single & Two Stage Mercury Free Thermostats
- ▶ Locking Thermostat Cover
- ▶ 24V SPST Relay
- ▶ Vent Caps
- ▶ Combustion Air Inlet Kits (For Concentric Venting)
- ▶ Discharge Nozzles (30°, 60°, 90°)



Model BRT045



Model BRT045



Model BRT120



Model BRT120



260 North Elm Street • Westfield, MA 01085
Tel: (413) 562-5423
www.beacon-morris.com