

ARROW

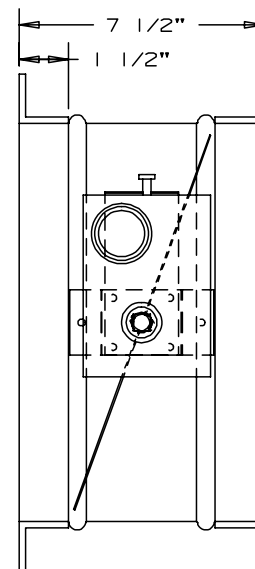
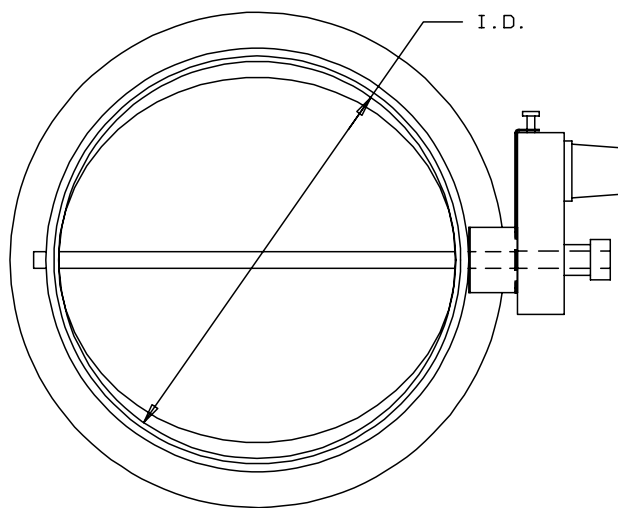
FORMED STEEL
BALANCING DAMPER - REMOTE LOCATIONS

TYPE 200-BRD

AIR BALANCING DAMPER FOR INDIVIDUAL BRANCH AND ZONE CONTROL AT
DIFFICULT OR REMOTE CEILING LOCATIONS

DAMPER BALANCING ADJUSTMENTS ARE QUICK AND PRECISE USING A
HAND-HELD REMOTE CONTROLLER TO ADJUST DAMPER BLADE POSITION

THIS DAMPER ASSEMBLY DOES NOT REQUIRE A CONTINUOUS POWER
SOURCE AND IS A "GREEN-FRIENDLY" PRODUCT.



STANDARD CONSTRUCTION

FRAME: 22 GA. GALVANIZED STEEL SLEEVE
7 1/2" LONG WITH REINFORCING RIBS.

BLADE: 20 GA. GALVANIZED STEEL.

SHAFT: 1/2" DIA. PLATED STEEL STUB,
MONO-BOLTED TO BLADE.

BEARINGS: SWAGED STEEL.

FINISH: FACTORY MILL.

ACTUATOR: GEAR DRIVE FAIL IN PLACE. POWER
REQUIREMENTS 9 VOLT DC, POWERED
THRU DC-1 OR RCM-3 REMOTE CONTROL

DAMPER SIZE: 4" TO 24"

MAX SYSTEM VELOCITY
2000 FPM VELOCITY FOR 20" DIA.
1500 FPM VELOCITY ABOVE 20" TO 24"Ø

NOMINAL DEDUCTIONS WILL BE MADE TO THE OPENING SIZE GIVEN



ARROW UNITED INDUSTRIES
A DIVISION OF MESTEK, INC.
314 RIVERSIDE DRIVE
WYALUSING, PA 18853
TEL: (570) 746-1888 FAX: (570) 746-9286

AGENT: _____

ARCH./ENG.:

CONTR.:

PROJECT:

EDR: ECN: JOB:

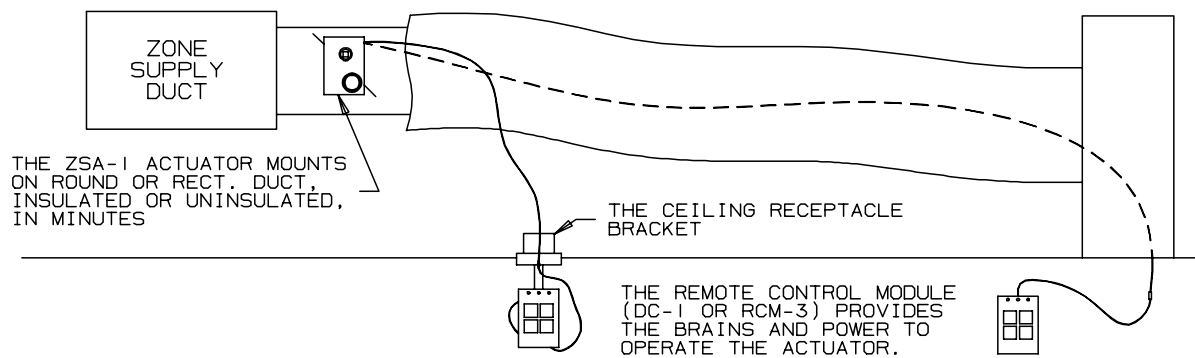
DATE: DWN.: DWG.:

1084-MAY-2010-I

DAMPER MODEL 200-BRD

BALANCING DAMPER-REMOTE LOCATIONS

WIRELESS REMOTE CONTROL SYSTEM FOR AIR BALANCING DAMPER ADJUSTMENTS



OPTION #1

THE "CEILING RECEPTACLE BRACKET" INTERFACE METHOD IS WELL SUITED TO WIRELESS REMOTE ADJUSTMENT OF THE BALANCING DAMPER.

OPTION #2

THE "FEED THRU" METHOD IS QUICK AND EASY AND AVOIDS HAVING TO DRILL A HOLE IN THE PLENUM OR DIFFUSER BACK PAN FOR THE POWER/SIGNAL CABLE

OPTION #3 THE REMOTE PANEL

