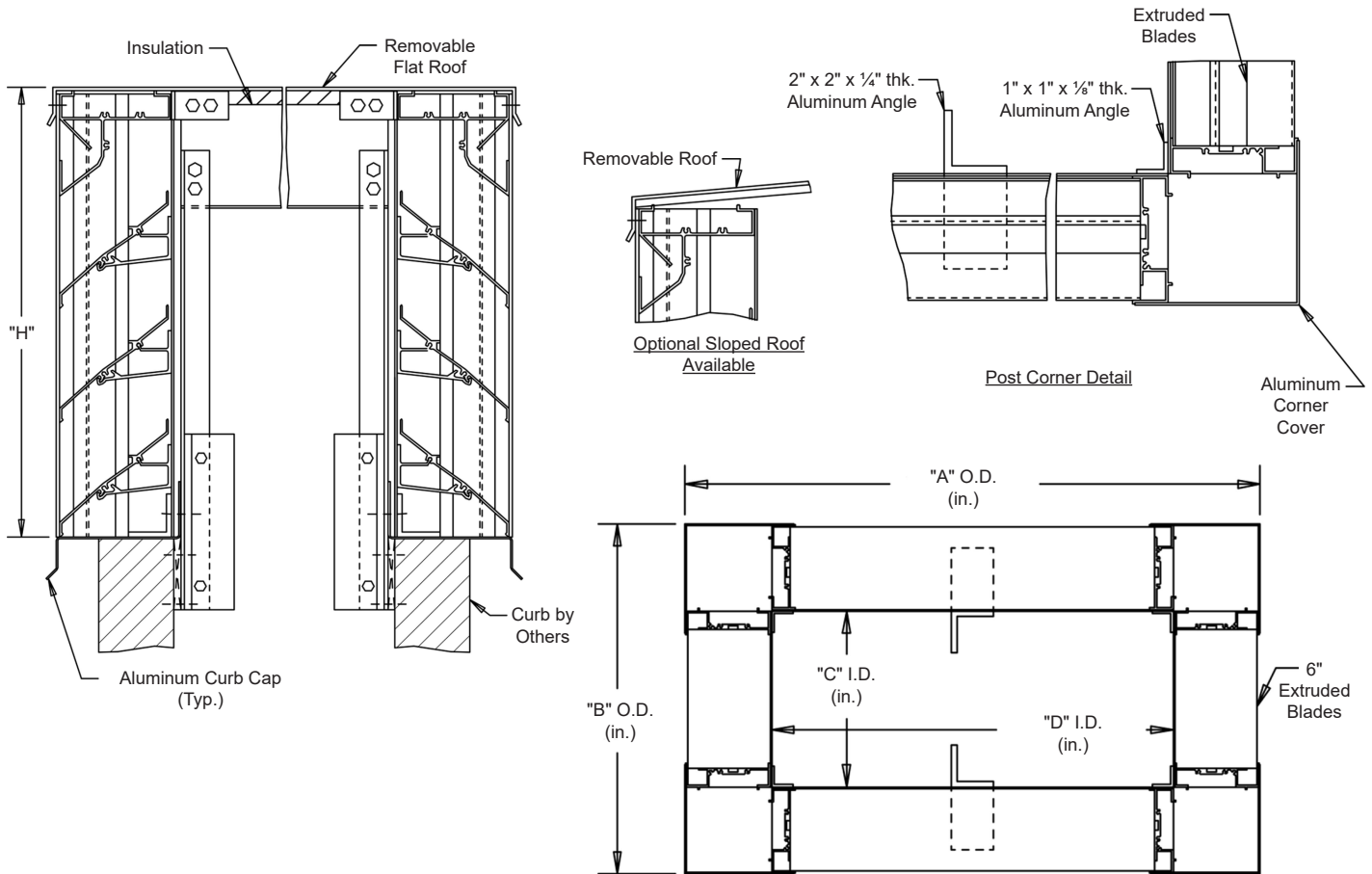


MODEL SPH-22-F-6

Penthouse Louver • Post Corner • 6" Blade Width • Stationary Straight Blades • Extruded Aluminum

Interior Fastening Installation

ANGLES - All corners and intermediate to extend from roof into curb.



Continuous angle at the four corners and intermediate as required.

Standard Materials and Construction

MATERIAL: .081" thick (nominal) or .125" thick (nominal) extruded aluminum, 6063-T52/T6 alloy, with reinforcing rib bosses.

ROOF: .060" thick (nominal) sheet aluminum removable roof, reinforced with aluminum bracing where required to take a snow load of 40 lbs./sq.ft., plus a required safety factor.

SCREENS: (When indicated)
Bird Screen - 1/2" square mesh, 19 GA. galvanized steel, on interior.

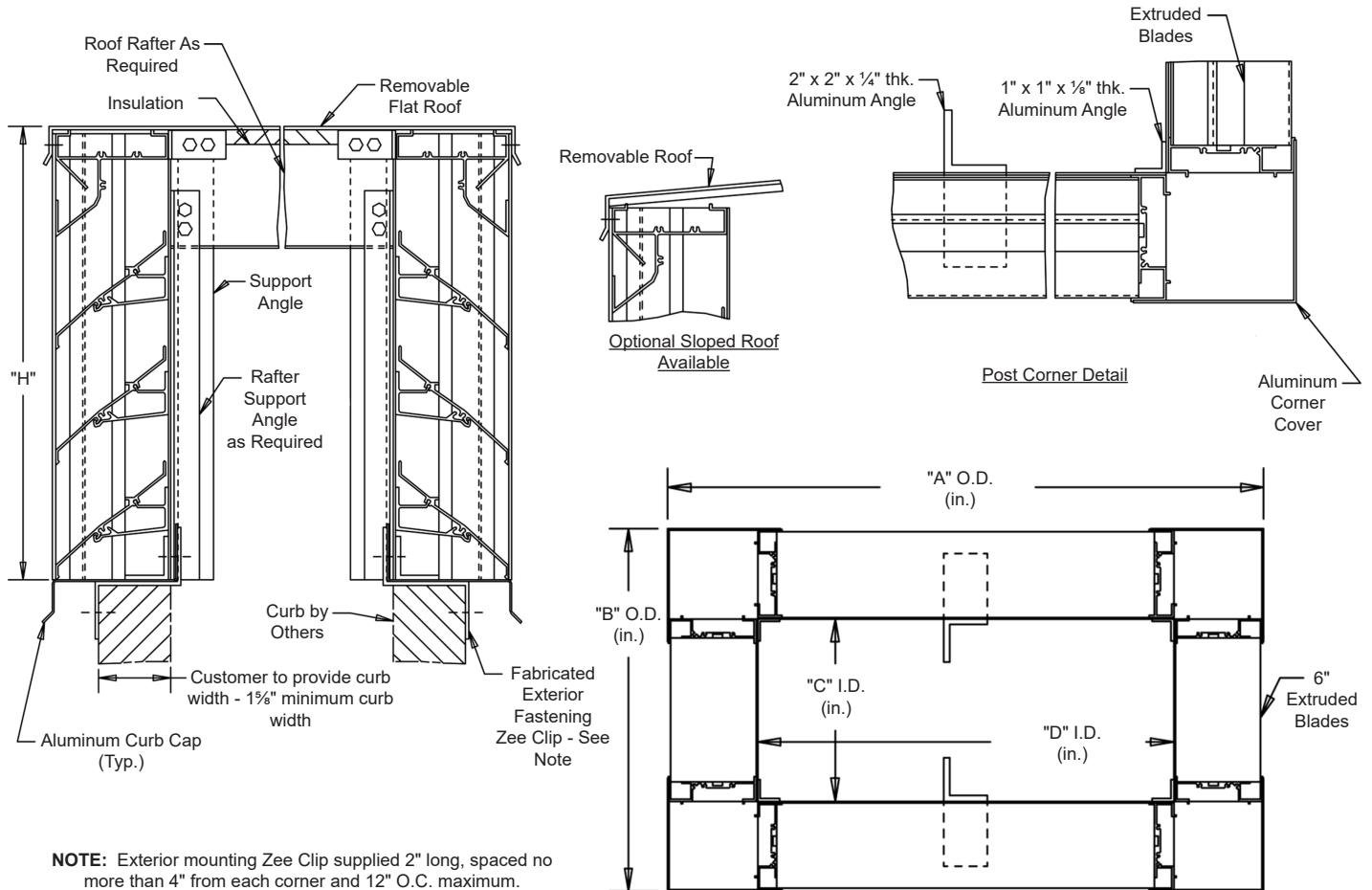
INSULATION: Underside of roof is lined with 1/2" thick insulation.

NOTES: Penthouse dimensions "A" or "B" exceeding 84" shall be shipped in sections for field assembly by others.

Item #	Qty	A	B	C	D	H	Mullion	Type	Location	Union Made	
		Penthouse Dimensions						Screens			
Arch. / Eng. :		EDR:						ECN:		Job:	
Contractor:											
Project:							Date:	DWN:		DWG:	



Exterior Fastening Installation



Continuous angle at the four corners and intermediate as required.

Standard Materials and Construction

MATERIAL: .081" thick (nominal) or .125" thick (nominal) extruded aluminum, 6063-T52/T6 alloy, with reinforcing rib bosses.

ROOF: .060" thick (nominal) sheet aluminum removable roof, reinforced with aluminum bracing where required to take a snow load of 40 lbs./sq.ft., plus a required safety factor.

SCREENS: (When indicated)
Bird Screen - 1/2" square mesh, 19 GA. galvanized steel, on interior.

INSULATION: Underside of roof is lined with 1/2" thick insulation.

NOTES: Penthouse dimensions "A" or "B" exceeding 84" shall be shipped in sections for field assembly by others.

Item #	Qty	A	B	C	D	H	Mullion	Type	Location	Union Made
		Penthouse Dimensions						Screens		
Arch. / Eng. :		EDR:						ECN:		Job:
Contractor:										
Project:		Date:						DWN:		DWG: