

MODEL SB-28

Extruded Aluminum Damper • 2" Deep • Single Straight Blade

Standard Materials and Construction

FRAME: 2" Deep x .081" thick (nominal) extruded aluminum channel.

BLADE: .060" thick (nominal) formed aluminum. Flat, single web design.

BEARINGS: Oilite bronze.

SHAFTS: 1/2" dia. plated steel.

SEALS: Polyurethane on jambs.

FINISH: Mill.

Options

Other materials: galvanized steel, stainless steel, bronze, copper, etc.

Other finishes: Baked enamel, Kynar, Anodized

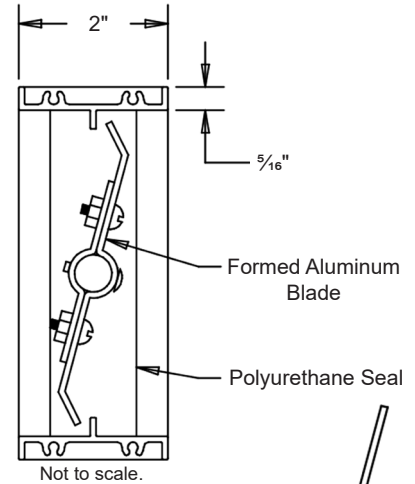
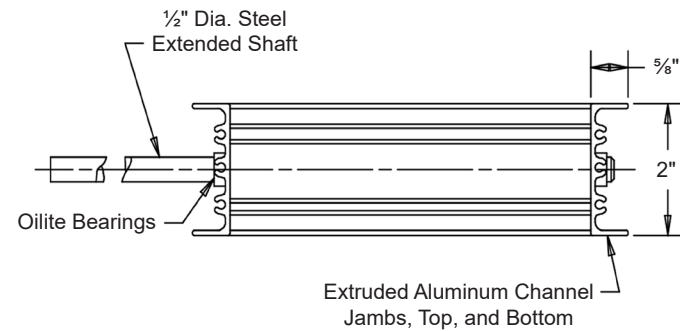
Bearings: Nylon, Celcon, ball, etc.

Notes

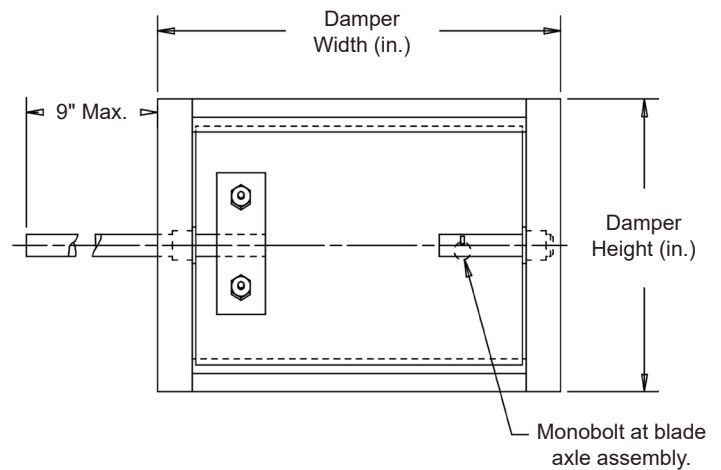
1. 1/4" nominal deduction will be made to the opening size given.
2. Dampers less than 12" wide have a fixed, permanently extended 6" axle shaft.
3. Units up to 48" wide will ship assembled.
4. Approximate shipping weight is 4.5 lbs./sq.ft.

Damper Sizes

| Min Panel | Max Single Panel |
|-----------|------------------|
| 6"W x 3"H | 36"W x 12"H |



Blade form for 2 7/8" and narrower blades.



| Item # | Qty | Width | Height | Width | Height | Union Made |
|---------------|-----|--------------|--------|-------------|--------|------------|
| | | Opening Size | | Damper Size | | |
| Arch. / Eng.: | | | | | | |
| Contractor: | | | | | | |
| Project: | | | | | | |
| EDR: | | ECN: | | Job: | | |
| Date: | | DWN: | | DWG: | | |

