

# MODEL AHFL-40I

Standard Access Doors • 4" Deep • In-Swing • With Louver • Extruded Aluminum

### Standard Materials and Construction

- FLANGED FRAME:** .080" thick (nominal) 6063-T52/T6 extruded aluminum.
- DOOR FRAME:** .080" thick (nominal) 6063-T52/T6 extruded aluminum.
- DOOR PANELS:** 20 GA. galvanized steel.
- INSULATION:** 2.25 lb. density polyurethane foam.
- HANDLES:** Dual-acting die cast zinc.
- GASKET:** Continuous length extruded foam santoprene.
- HINGE:** Stainless steel continuous type.
- FINISH:** Mill.

### Options

Door panel material: bonderized steel, stainless steel, aluminum  
 Finishes - Baked Enamel, Baked Epoxy, or Prime Coat

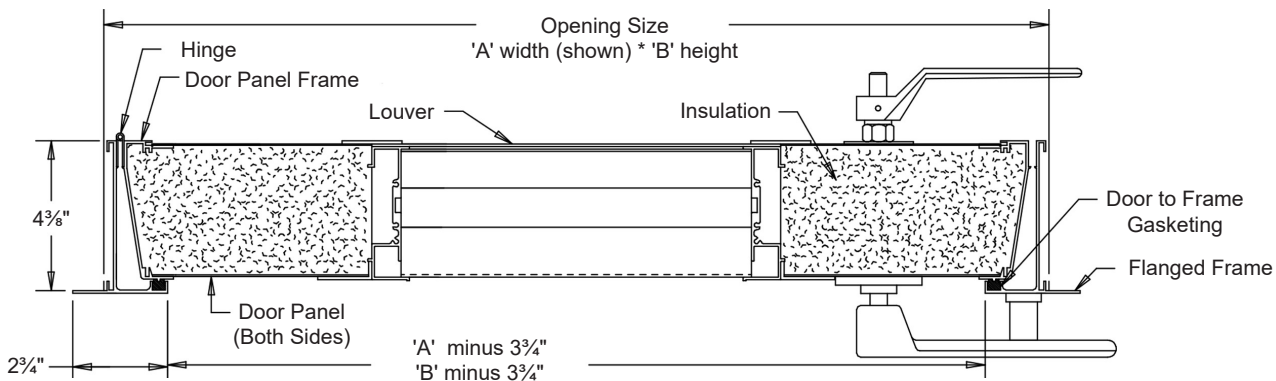
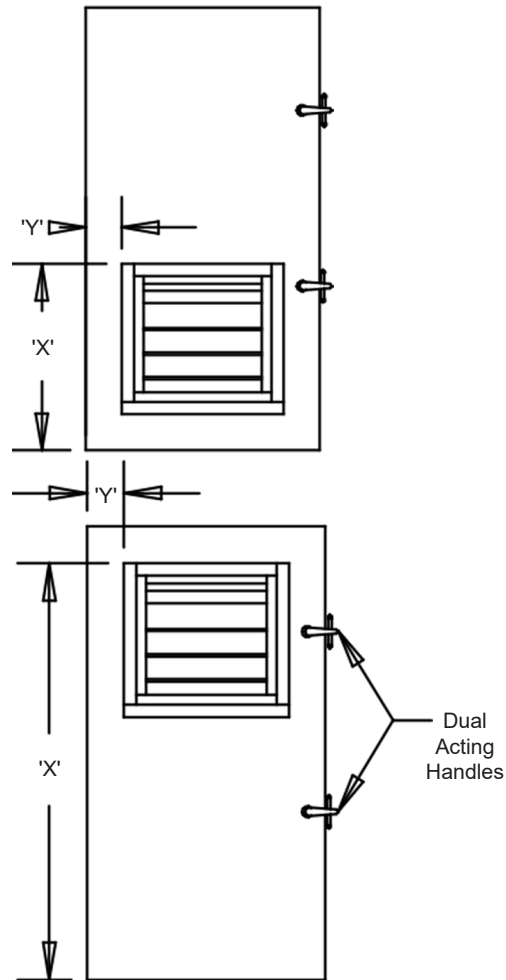
### Notes


1. Hinge always furnished on "B" height dimension.
2. (L) designates doors with louvers. Specify (L/H) left hand or (R/H) right hand hinge when viewing from the outside.
3. Minimum louver size is 12" x 12". Maximum louver size is full door panel size. For louver location, use "X" and "Y" dimensions.
4. Unless otherwise specified, door will be fabricated 1/4" under listed size. Dimensional tolerance is ± .075.
5. Door width cannot exceed two times its height.
6. Please refer to the installation instructions for mounting of handles and door assembly mounting.
7. In-swing doors are recommended for positive pressures. Out-swing doors are recommended for negative pressures.

### Door Sizes

Min Size	Max Size
12"W x 12"H	48"W x 96"H

Door Panel View Minus Door Frame  
 (Left hinge units shown.)  
 Not to scale.



									
Item #	Qty	Left Hand	Right Hand	"A" Width	"B" Height	Model -40 (EA-400-F)	X	Y	
		Door Hinge		Opening Size		Louver Size (Width, Height, O.D. of Flange)	Louver Location		Union Made
Arch. / Eng.:		EDR:			ECN:		Job:		
Contractor:		Date:			DWN:		DWG:		
Project:		Date:			DWN:		DWG:		