



BUILDING CODE COMPLIANCE OFFICE (BCCO)  
PRODUCT CONTROL DIVISION

MIAMI-DADE COUNTY, FLORIDA  
METRO-DADE FLAGLER BUILDING  
140 WEST FLAGLER STREET, SUITE 1603  
MIAMI, FLORIDA 33130-1563  
(305) 375-2901 FAX (305) 375-2908

## NOTICE OF ACCEPTANCE (NOA)

Arrow United Industries  
314 Riverside Drive  
Wyalusing, PA 18853

**SCOPE:** This NOA is being issued under the applicable rules and regulations governing the use of construction materials. The documentation submitted has been reviewed by Miami-Dade County Product Control Division and accepted by the Board of Rules and Appeals (BORA) to be used in Miami Dade County and other areas where allowed by the Authority Having Jurisdiction (AHJ).

This NOA shall not be valid after the expiration date stated below. The Miami Dade County Product Control Division (in Miami-Dade County) and/or the AHJ (in areas other than Miami Dade County) reserve the right to have this product or material tested for quality assurance purposes. If this product or material fails to perform in the accepted manner, the manufacturer will incur the expense of such testing and the AHJ may immediately revoke, modify, or suspend the use of such product or material within their jurisdiction. BORA reserves the right to revoke this acceptance, if it is determined by Miami-Dade county Product Control Division that this product or material fails to meet the requirements of the applicable building code.

This product is approved as described herein, and has been designed to comply with the High Velocity Hurricane Zone of the Florida Building Code.

**DESCRIPTION:** MDH-4 Architectural & Non-Architectural Louver System.

**APPROVAL DOCUMENT:** Drawing No.35972-4, titled "EA-22 Test Louver Architectural & Non-Architectural Louver" dated 06/16/00 with no revisions on, prepared by W.W. Schaefer Engineering & Consulting, PA, signed and sealed by W. W. Schaefer P.E., bearing the Miami-Dade County Product Control Renewal stamp with the NOA number and expiration date by the Miami-Dade County Product Control Division.

**MISSILE IMPACT RATING:** Large and Small Missile Impact Resistant.

**LABELING:** Each unit shall bear a permanent label with the manufacturer's name or logo, city, state and following statement: "Miami-Dade County Product Control Approved", unless otherwise noted herein.

**RENEWAL** of this NOA shall be considered after a renewal application has been filed and there has been no change in the applicable building code negatively affecting the performance of this product.

**TERMINATION** of this NOA will occur after the expiration date or if there has been a revision or change in the materials, use, and/or manufacture of the product or process. Misuse of this NOA as an endorsement of any product, for sales, advertising or any other purposes shall automatically terminate this NOA. Failure to comply with any section of this NOA shall be cause for termination and removal of NOA.

**ADVERTISEMENT:** The NOA number preceded by the words Miami-Dade County, Florida, and followed by the expiration date may be displayed in advertising literature. If any portion of the NOA is displayed, then it shall be done in its entirety.

**INSPECTION:** A copy of this entire NOA shall be provided to the user by the manufacturer or its distributors and shall be available for inspection at the job site at the request of the Building Official.

**This NOA renews NOA # 99-1228.01** consists of this page 1 as well as approval document mentioned above. The submitted documentation was reviewed by **Candido F. Font PE.**



NOA No: 03-0210.03  
Expiration Date: July 27, 2008  
Approval Date: April 03, 2003  
Page 1

**NOTICE OF ACCEPTANCE: EVIDENCE SUBMITTED**

(For File ONLY. Not part of NOA)

**A. DRAWINGS.**

1. Drawing prepared by United Arrow Industries titled "EA-22 Test Louver Architectural & Non-Architectural Louver," Drawing No. 35972-4, dated 06/16/00 with no revisions. signed and sealed by W. W. Shaefer, PE.

**B. TESTS.**

1. Test report on Large Missile Impact Test, Cyclic Wind Pressure Test and Uniform Static Air Pressure Test of "AUI EA-22 Architectural & Non-Architectural Fixed Louver", prepared by Hurricane Test Laboratory, Inc., report No. 0199-0518-99, dated 05/26/99 to 06/11/99, signed and sealed by V. J. Abraham, PE
2. Test report on Large Missile Impact Test, Cyclic Wind Pressure Test and Uniform Static Air Pressure Test of "AUI EA-22 Architectural & Non-Architectural Fixed Louver", prepared by Hurricane Test Laboratory, Inc, report No. 0199-0615-99, dated 06/24/99, signed and sealed by V. J. Abraham, PE.

**C. CALCULATIONS.**

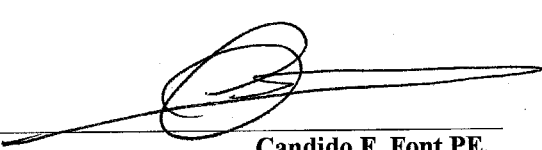
1. Allowable Load Calculations, dated 11/12/99, pages 1 to 3 of 3, prepared by W. W. Schaefer Engineering & Consulting, PA., signed and sealed by W. W. Schaefer. PE.
2. Allowable Load Calculations, dated 04/14/00, pages 1 to 6 of 6, prepared by W. W. Schaefer Engineering & Consulting, PA signed and sealed by W. W. Shaefer. PE.

**D. MATERIAL CERTIFICATIONS.**

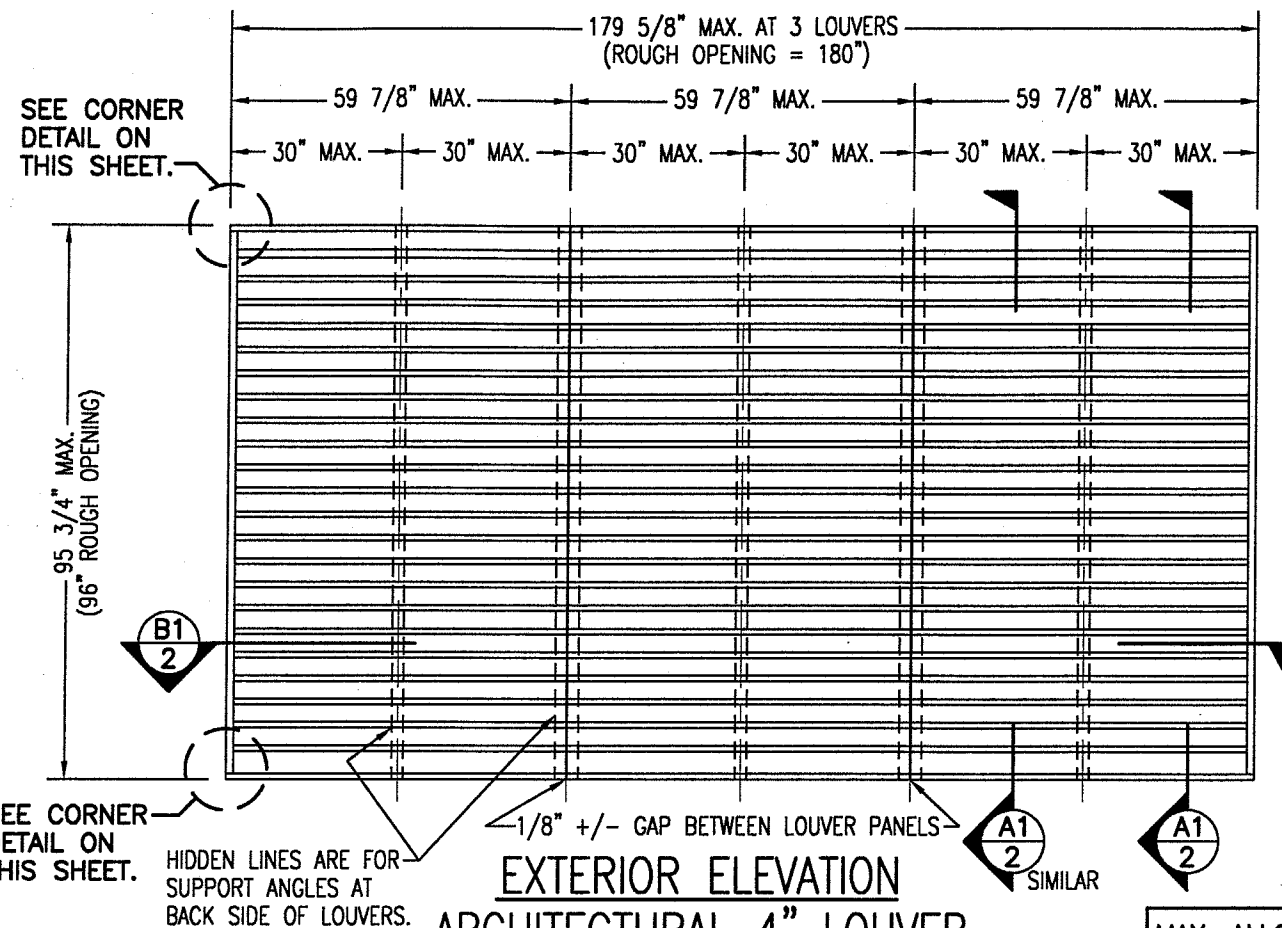
1. Tensile Test report on 4 inch louver, prepared by Q. C. Metallurgical, Inc., No. 9LM-2586, dated 12/27/99, signed and sealed by F. Grate, PE.

**E. STATEMENTS**

1. Test compliance letter issued by Hurricane Test Laboratory, Inc. on 12/08/99, signed and sealed by V. J. Abraham, PE.
2. Code compliance letter issued by W. W. Schaefer Engineering & Consulting, PA. On 11/15/99, signed and sealed by W. W. Schaefer, PE.
3. No interest letter issued by W. W. Schaefer Engineering & Consulting, P.A. on 11/15/99, signed and sealed by W. W. Schaefer, PE.
4. No change letter issued by Arrow United Industries on 02/04/03 and signed by V. Kreglewicz.



Candido F. Font PE.  
Sr. Product Control Examiner  
NOA No 03-0210.03  
Expiration Date: July 27, 2008  
Approval: Date: April 3, 2003



**EXTERIOR ELEVATION  
ARCHITECTURAL 4" LOUVER**

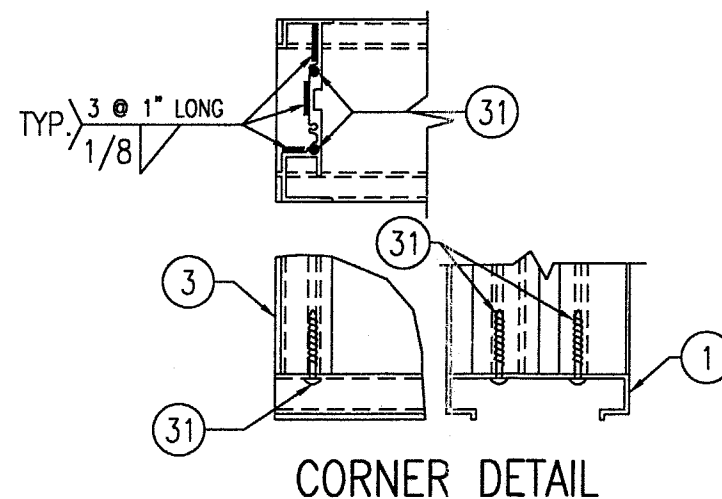
SCALE: 3/8"=1'-0"

NOTE: THIS LOUVER SYSTEM MAY CONSIST OF AN UNLIMITED NUMBER OF SECTIONS PROVIDING EACH SECTION DOES NOT EXCEED 59 7/8" X 95 3/4" IN SIZE.

MAX. ALLOWABLE DESIGN WIND PRESSURE	
POSITIVE	NEGATIVE
150 PSF	150 PSF
NOTE: SEE LOAD TABLE ON SHEET 7 FOR VARIATIONS OF PRESSURES WITH RESPECT TO PANEL WIDTH & CLIP SPACING.	

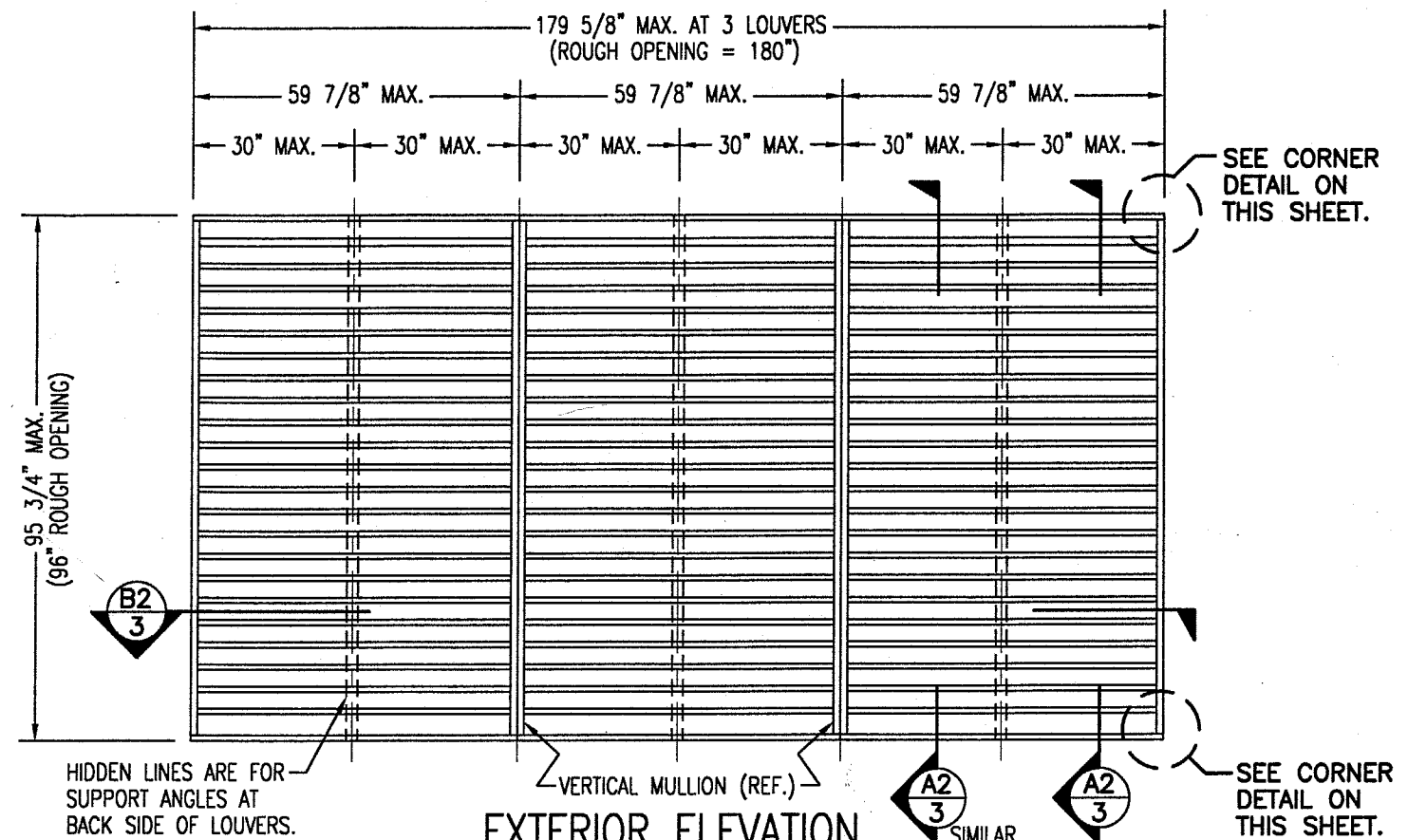
#### GENERAL NOTES:

1. MAXIMUM ALLOWABLE INDIVIDUAL PANEL SIZE = 59 7/8" X 95 3/4"
2. MAXIMUM ASSEMBLY SIZE = UNLIMITED WIDTH, UP TO 95 3/4" HEIGHT.
3. ASSEMBLIES/SECTIONS MAY BE STACKED VERTICALLY PROVIDING A STRUCTURAL SUPPORT IS DESIGNED AND INSTALLED BY OTHERS TO SUPPORT ALL LOADS TRANSFERRED FROM THE LOUVER ASSEMBLY.
4. MAXIMUM UNSUPPORTED BLADE LENGTH SHALL NOT EXCEED 30".
5. ALL FASTENERS SHALL BE PLATED STEEL OR 304 STAINLESS STEEL.
6. SEPARATION OF DISSIMILAR MATERIALS MUST BE MAINTAINED PER SECTION 3004.4 OF THE SOUTH FLORIDA BUILDING CODE 1994 EDITION.
7. APPROVED TYPES OF OPENINGS: 3000 PSI CONCRETE/MASONRY, WOOD OR STEEL. SEE SHEETS 4 & 5 FOR ANCHORING DETAILS.
8. THESE LOUVER SYSTEMS HAVE BEEN TESTED, ANALYZED AND APPROVED FOR DESIGN PRESSURES NOT TO EXCEED THOSE SHOWN IN THE LOAD TABLE ON SHEET 7.
9. THIS SYSTEM HAS NOT BEEN TESTED FOR WATER INFILTRATION RESISTANCE AND IS NOT A WATER RESISTANT SYSTEM.
10. BUCKING, OPENINGS & BUCKING FASTENERS MUST BE DESIGNED & INSTALLED TO WITHSTAND WIND LOADS AS DETERMINED FOR EACH APPLICATION.
11. ALL HARDWARE & FASTENERS SHALL BE IN ACCORDANCE WITH THESE DRAWINGS & MAY NOT VARY UNLESS SPECIFICALLY MENTIONED ON THESE DRAWINGS.
12. THE DETAILS & SPECIFICATIONS HERE-IN REPRESENT THE PRODUCTS PROPOSED FOR IMPACT, CYCLIC & UNIFORM STATIC AIR PRESSURE TESTING IN CONFORMANCE WITH DADE COUNTY PROTOCOLS PA-201, 202 & 203 FOR BOTH IMPACT & NON-IMPACT LOUVERS.
13. THESE LOUVER SYSTEMS HAVE BEEN DESIGNED IN ACCORDANCE WITH THE SOUTH FLORIDA BUILDING CODE 1994 EDITION.
14. THIS PRODUCT HAS BEEN TESTED IN ACCORDANCE WITH DADE COUNTY PROTOCOLS PA-201, 202 & 203 FOR LARGE MISSILE IMPACT, STRUCTURAL & CYCLIC TESTING.



**CORNER DETAIL**

15. THESE LOUVERS ARE TO BE INSTALLED IN A LOCATION WHERE THE ROOM BEHIND THE LOUVER IS DESIGNED TO DRAIN WATER PENETRATING INTO THE ROOM AND THE ROOM WILL HOUSE WATER RESISTANT/WATERPROOF EQUIPMENT COMPONENTS OR SUPPLIES.



**EXTERIOR ELEVATION  
NON-ARCHITECTURAL 4" LOUVER**

SCALE: 3/8"=1'-0"


NOTE: THIS LOUVER SYSTEM MAY CONSIST OF AN UNLIMITED NUMBER OF SECTIONS PROVIDING EACH SECTION DOES NOT EXCEED 59 7/8" X 95 3/4" IN SIZE.

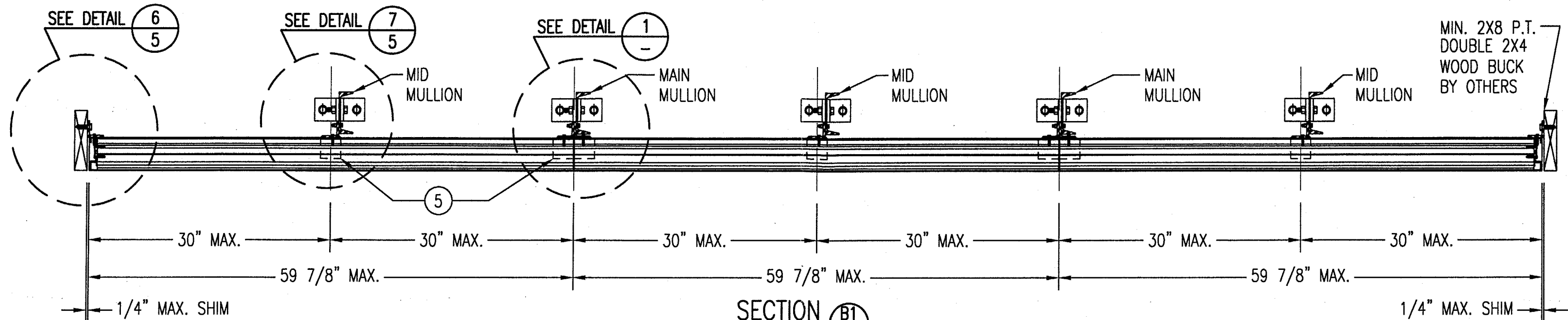
PRODUCT RENEWED  
as complying with the Florida  
Building Code  
Acceptance No. 03-0210.03  
Expiration Date 8/27/2008  
By  
Miami Dade Product Control  
Division

APPROVED AS COMPLYING WITH THE  
SOUTH FLORIDA BUILDING CODE  
DATE July 27, 2000  
BY [Signature]  
PRODUCT CONTROL DIVISION  
BUILDING CODE COMPLIANCE OFFICE  
ACCEPTANCE NO. 99-1228.01

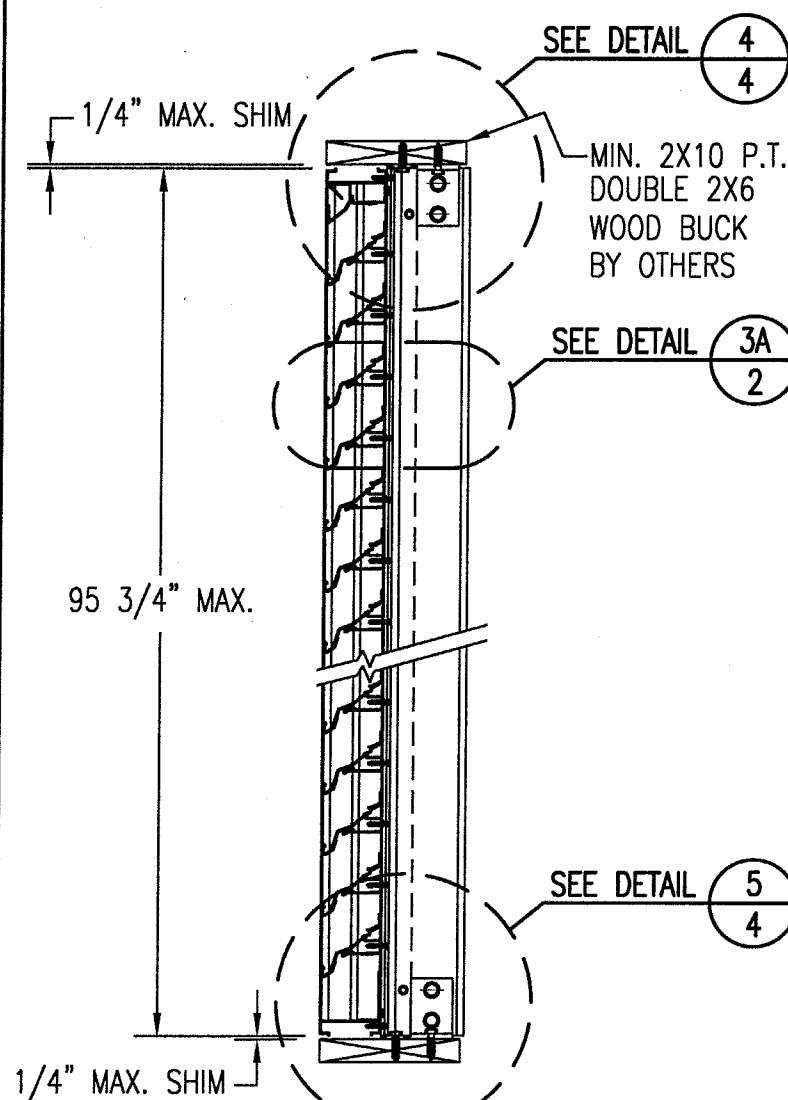
JUN 16 2000  
[Signature]  
WARREN W. SCHAEFER, P.E.  
STRUCTURAL ENGINEER  
P.E. No. 44135  
W. W. SCHAEFER ENGINEERING  
& CONSULTING, P.A.  
STRUCTURAL CONSULTING ENGINEERS  
600 SANDTREE DRIVE, SUITE 203B  
PALM BEACH GARDENS, FL 33403  
PHONE: 561-775-4902

		REVISION	DATE	DRN CK	APPD

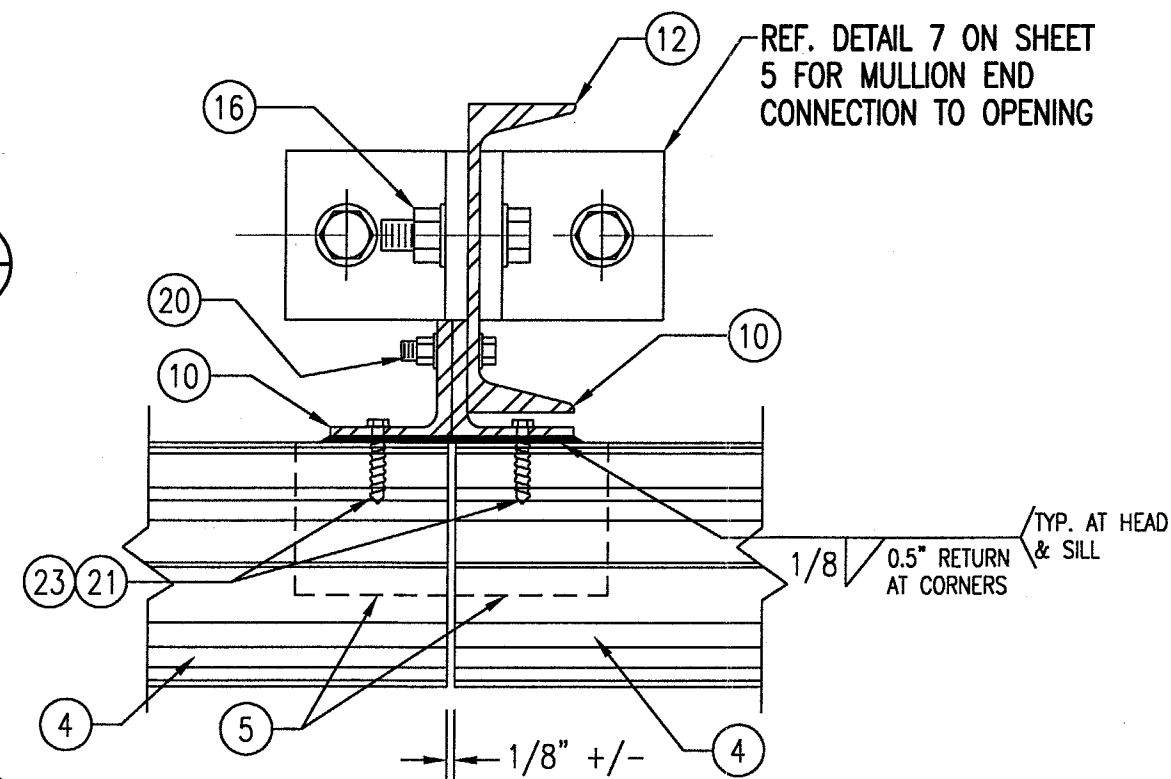
	<b>ARROW UNITED INDUSTRIES</b> A Division of Mestek, Inc.				
	314 RIVERSIDE DRIVE - P.O. BOX 69 WYALUSING, PA 18853 PHONE 570-746-1888; FAX 570-746-9286				
	<b>EA-22 TEST LOUVER</b> <b>ARCHITECTURAL &amp; NON-ARCHITECTURAL LOUVER</b> <b>ELEVATIONS &amp; NOTES</b>				
	CKD.BY	APPD.BY	W.W.S.	SHEET: 1 of 7	
DRN.BY	W.W.S.	DWG. NO.	35972-4		REV.
DATE	06-16-00				



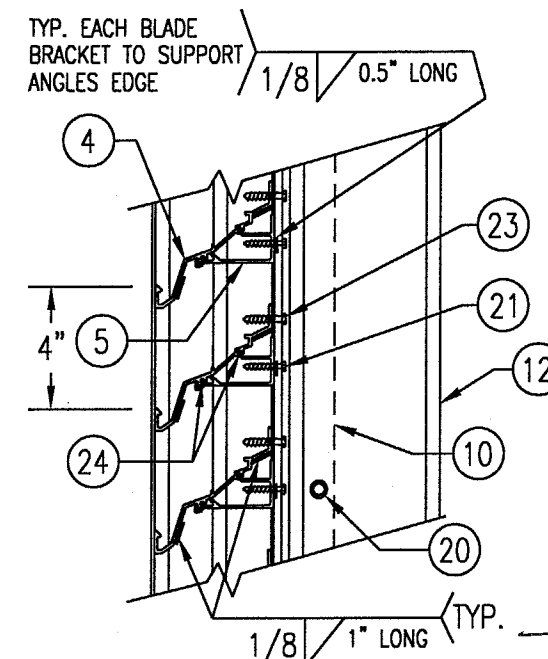
**SECTION B1**  
SCALE: 1"=1'-0"  
ARCHITECTURAL LOUVER



**SECTION A1**  
SCALE: 1"=1'-0"  
ARCHITECTURAL LOUVER



**DETAIL 1**  
SCALE: 1/3 FULL  
ARCHITECTURAL LOUVER



**DETAIL 3A**  
SCALE: 2"=1'-0"  
TYP. AT ALL MULLIONS THIS SHEET

PRODUCT RENEWED  
as complying with the Florida  
Building Code  
Acceptance No. 03-0210-03  
Expiration Date 07/27/2008


By   
Miami Dade Product Control  
Division

APPROVED AS COMPLYING WITH THE  
SOUTH FLORIDA BUILDING CODE  
DATE July 27, 2000

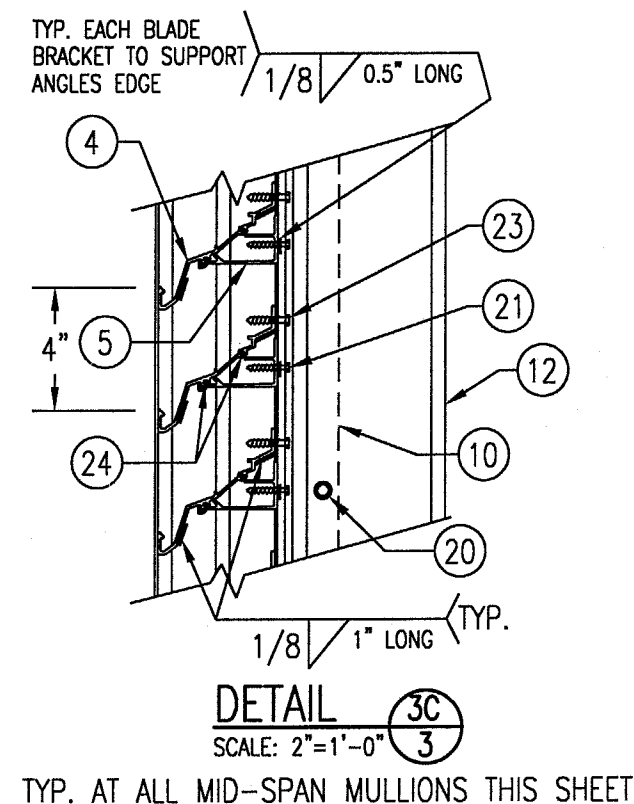
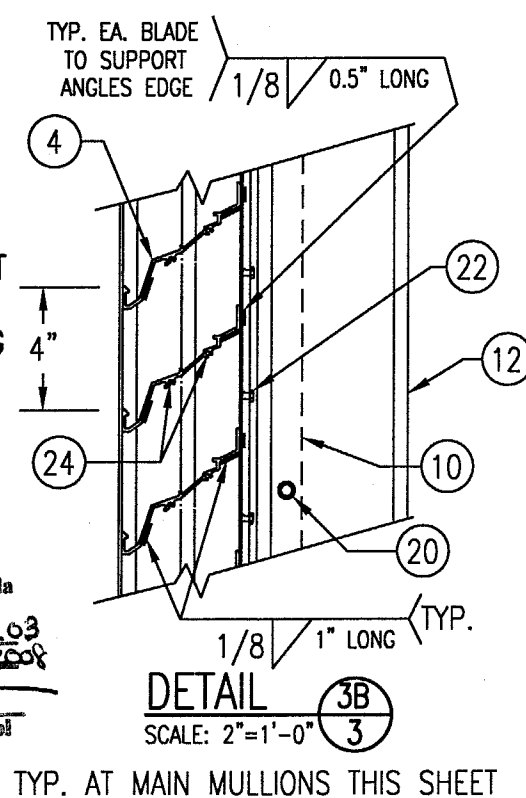
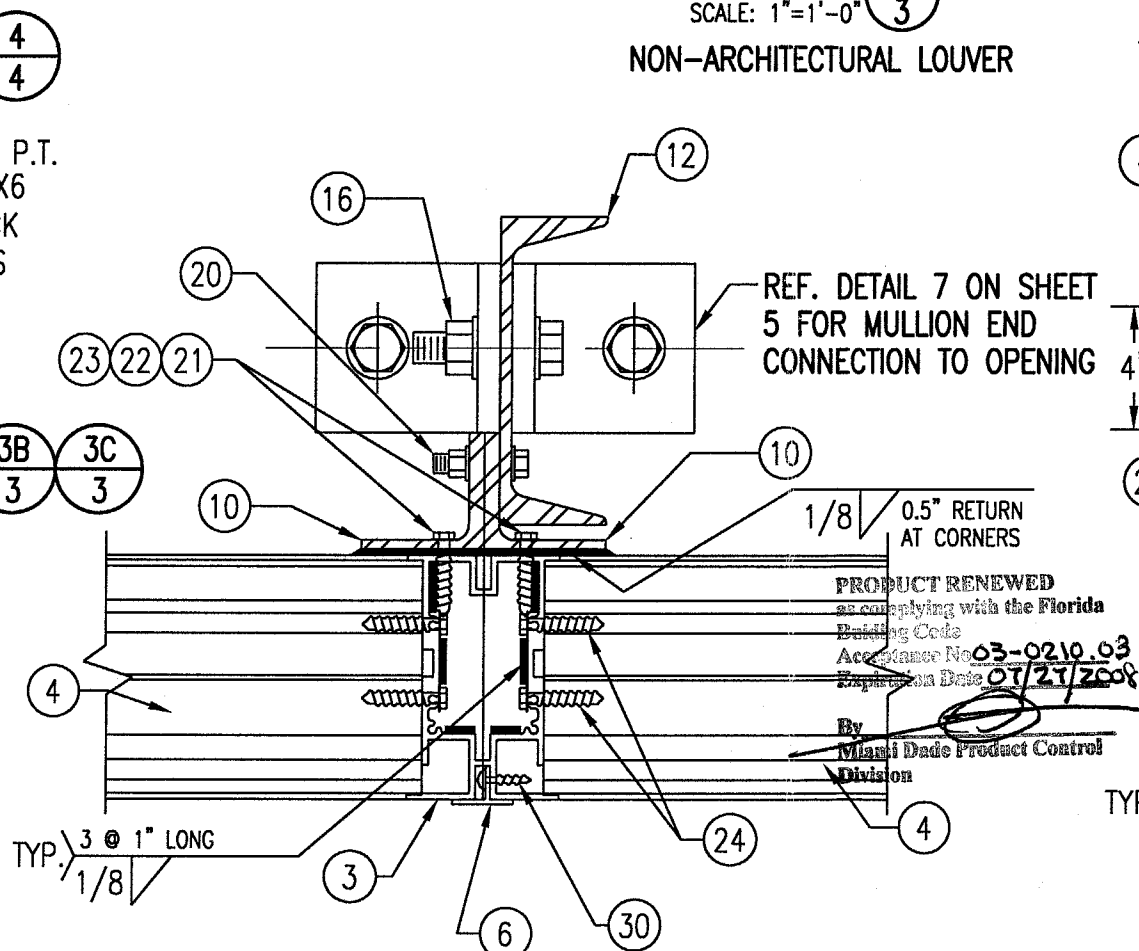
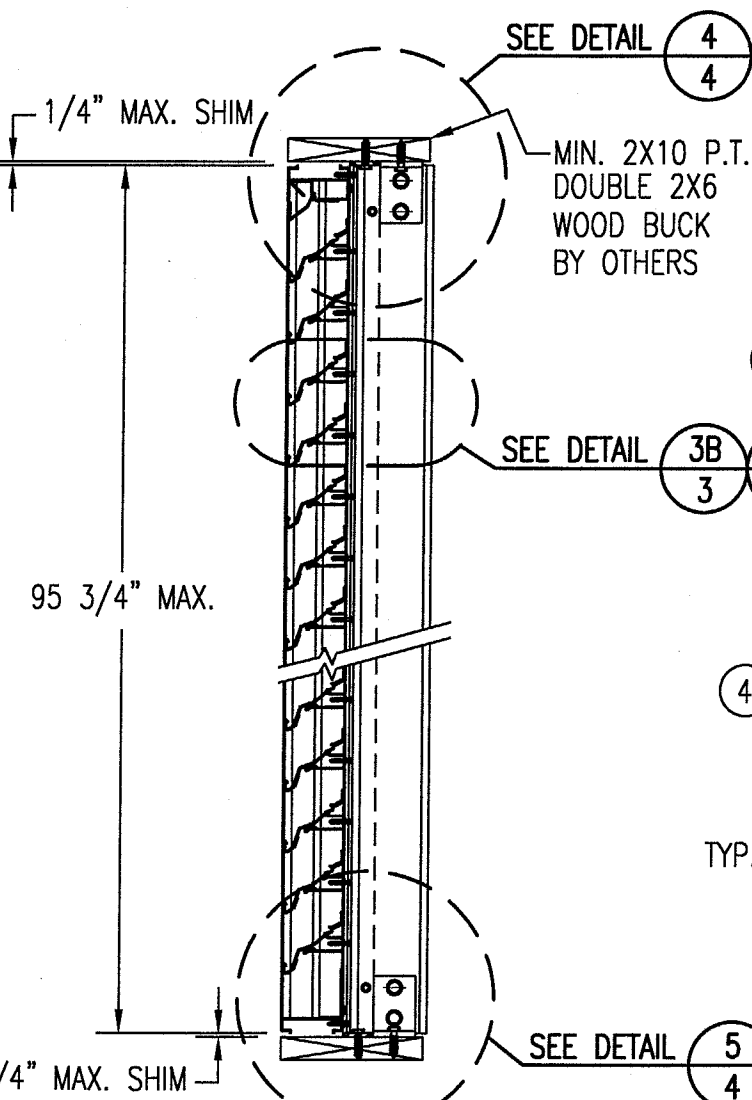
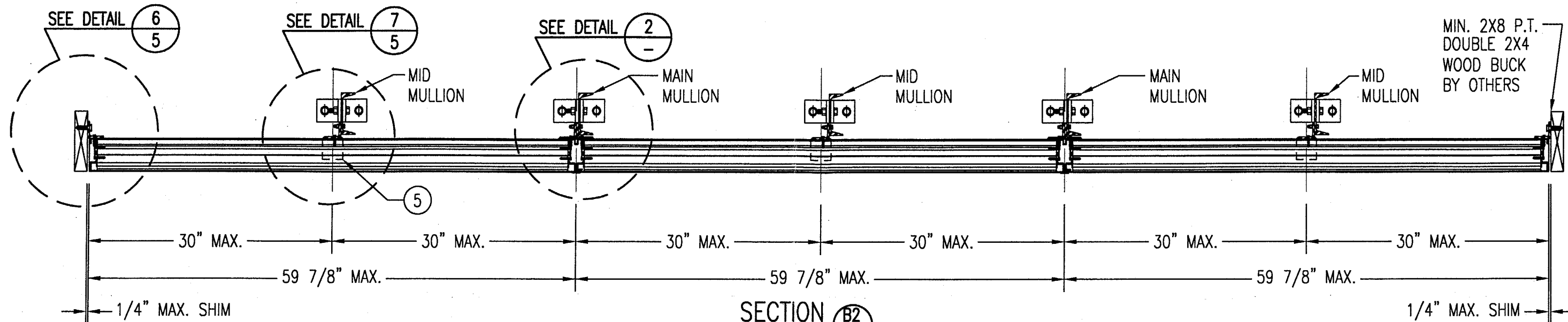
BY   
PRODUCT CONTROL DIVISION  
BUILDING CODE COMPLIANCE OFFICE  
ACCEPTANCE NO. 77-1228-01

**JUN 16 2000**  
  
**WARREN W. SCHAEFER, P.E.**  
STRUCTURAL ENGINEER  
P.E. No. 44135  
**W. W. SCHAEFER ENGINEERING & CONSULTING, P.A.**  
STRUCTURAL CONSULTING ENGINEERS  
600 SANDTREE DRIVE, SUITE 203B  
PALM BEACH GARDENS, FL 33403  
PHONE: 561-775-4902

		REVISION	DATE	DRN CK	APPD

	<b>ARROW UNITED INDUSTRIES</b> A Division of Mestek, Inc.	
	314 RIVERSIDE DRIVE - P.O. BOX 69 WYALUSING, PA 18853 PHONE 570-746-1888; FAX 570-746-9286	

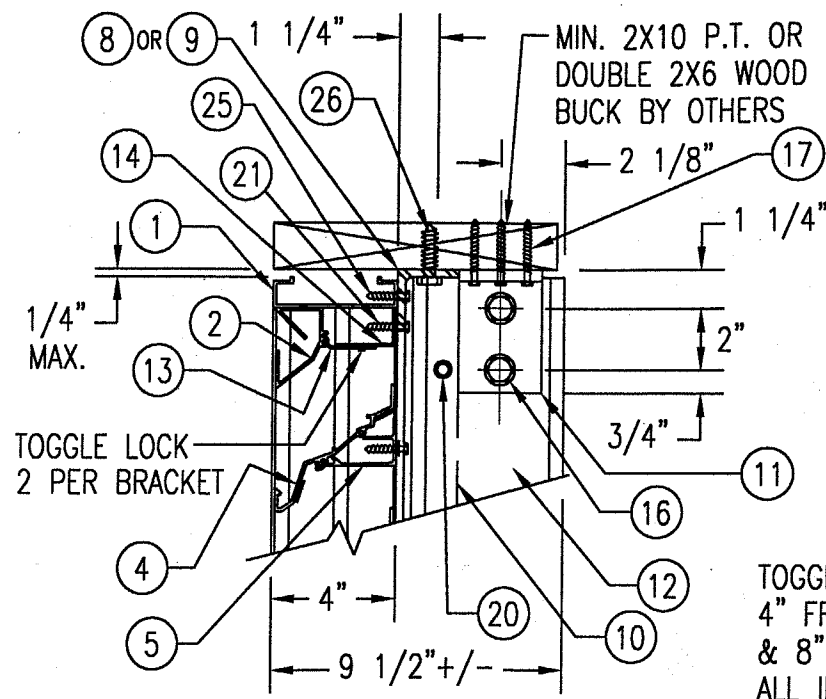
<b>EA-22 TEST LOUVER ARCHITECTURAL LOUVER SECTIONS &amp; DETAILS</b>		
CKD.BY	APPD.BY W.W.S.	SHEET: 2 of 7
DRN.BY W.W.S.	DWG. NO.	REV.
DATE 06-16-00	35972-4	



APPROVED AS COMPLYING WITH THE  
SOUTH FLORIDA BUILDING CODE  
DATE July 27, 2000  
BY [Signature]  
PRODUCT CONTROL DIVISION  
BUILDING CODE COMPLIANCE OFFICE  
ACCEPTANCE NO. 99-1228-01

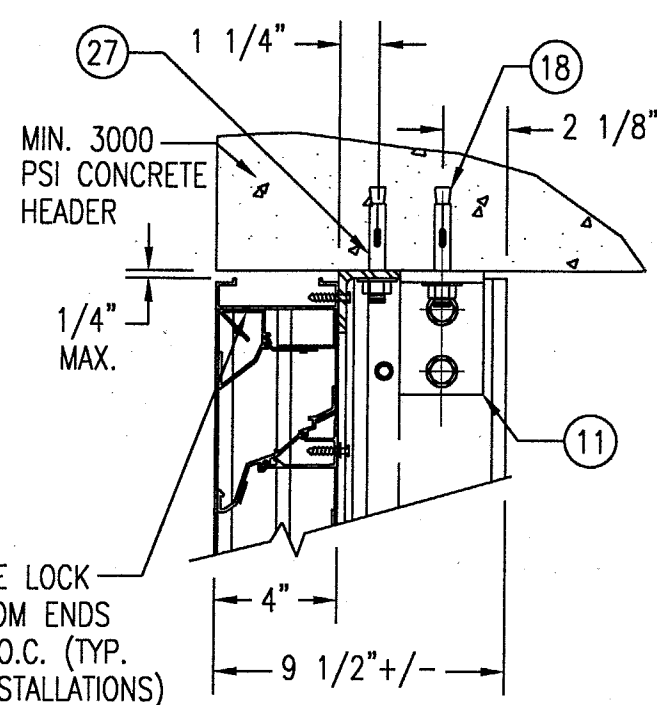
JUN 16 2000  
[Signature]  
WARREN W. SCHAEFER, P.E.  
STRUCTURAL ENGINEER  
P.E. No. 44135  
W. W. SCHAEFER ENGINEERING  
& CONSULTING, P.A.  
STRUCTURAL CONSULTING ENGINEERS  
600 SANDTREE DRIVE, SUITE 203B  
PALM BEACH GARDENS, FL 33403  
PHONE: 561-775-4902

REVISION	DATE	DRN	CK	APPD
<b>ARROW UNITED INDUSTRIES</b> A Division of Mestek, Inc. 314 RIVERSIDE DRIVE - P.O. BOX 69 WYALUSING, PA 18853 PHONE 570-746-1888; FAX 570-746-9286 <b>EA-22 TEST LOUVER</b> <b>NON-ARCHITECTURAL LOUVER</b> <b>SECTIONS &amp; DETAILS</b>				
CKD.BY	APPD.BY W.W.S.	SHEET: 3 of 7		
DRN.BY W.W.S.	DWG. NO.	35972-4		
DATE 06-16-00	REV.			



### WOOD FRAMED OPENING

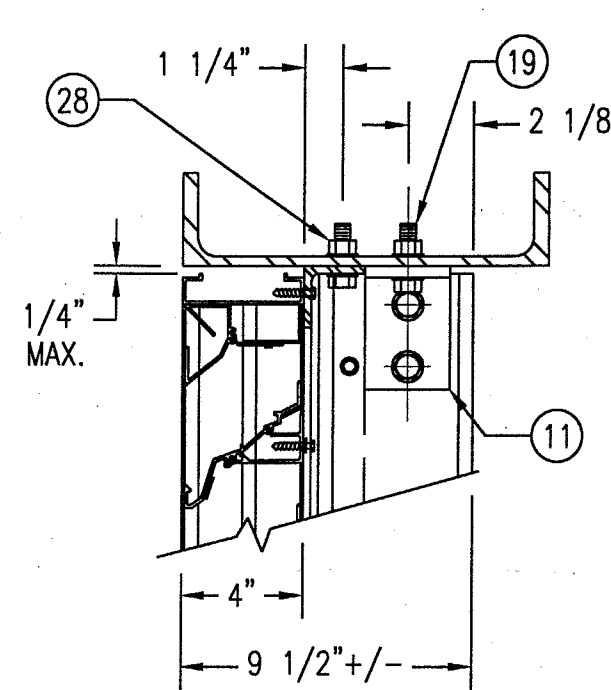
SEE "DETAIL 3A & 3B" FOR LOUVER BLADE DETAILS



### CONCRETE HEAD

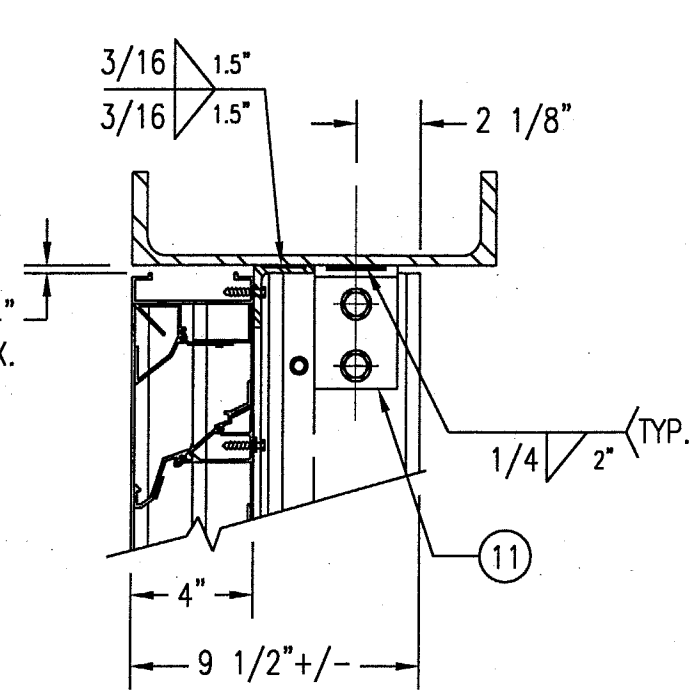
SEE "WOOD OPENING" FOR DETAIL NOT SHOWN  
(MASONRY ACCEPTABLE AT SIDES ONLY  
AND MAY NOT BE USED AT HEAD OR SILL)

DETAIL 4  
SCALE: 2"=1'-0"



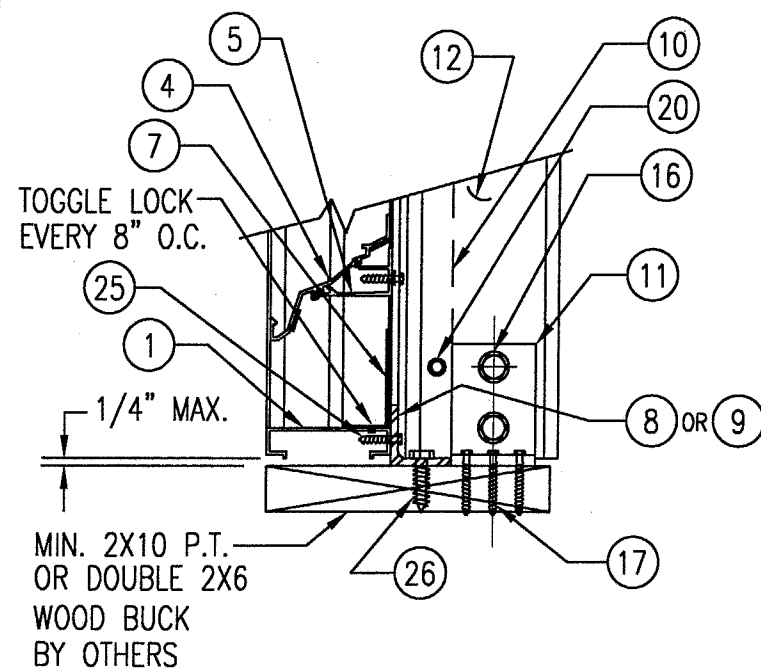
### STEEL FRAME OPENING (BOLTED)

SEE "WOOD OPENING" FOR DETAIL NOT SHOWN



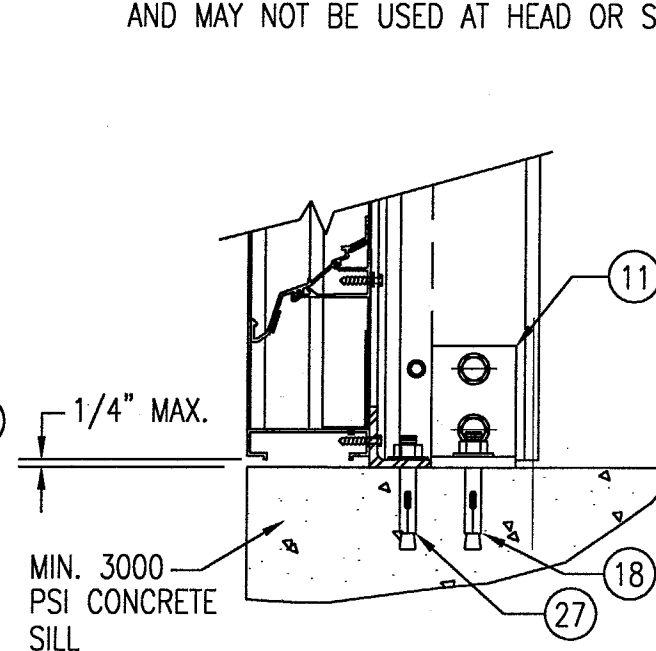
### STEEL FRAME OPENING (WELDED)

SEE "WOOD OPENING" FOR DETAIL NOT SHOWN



### WOOD FRAMED OPENING

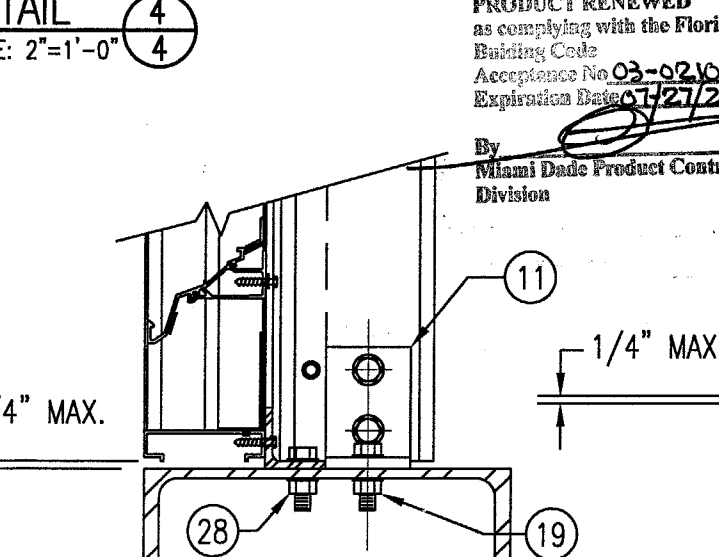
SEE "DETAIL 3A & 3B" FOR LOUVER BLADE DETAILS



### CONCRETE SILL

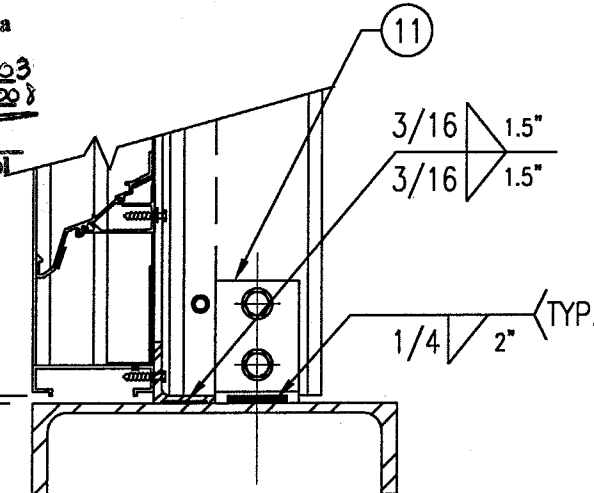
SEE "WOOD OPENING" FOR DETAIL NOT SHOWN  
(MASONRY ACCEPTABLE AT SIDES ONLY  
AND MAY NOT BE USED AT HEAD OR SILL)

DETAIL 5  
SCALE: 2"=1'-0"



### STEEL FRAME OPENING (BOLTED)

SEE "WOOD OPENING" FOR DETAIL NOT SHOWN



### STEEL FRAME OPENING (WELDED)

SEE "WOOD OPENING" FOR DETAIL NOT SHOWN

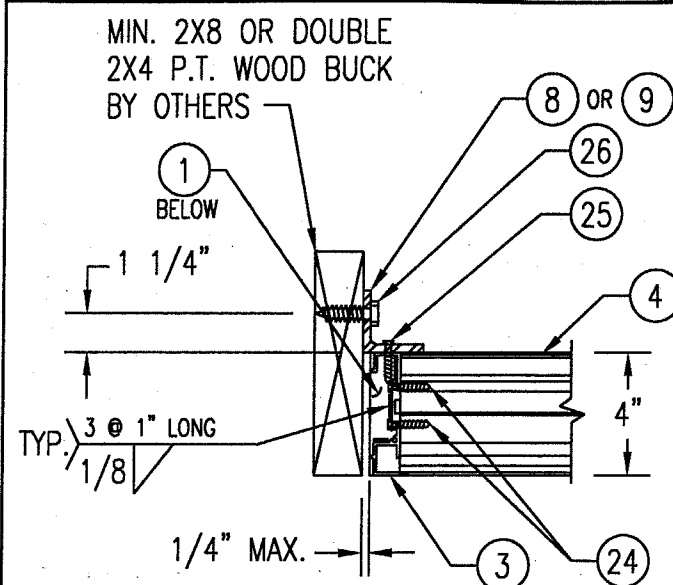
MASONRY MAY ONLY BE USED AT SIDES  
OF LOUVER PANELS & MAY NOT BE USED  
AT THE HEAD OR SILL.

APPROVED AS COMPLYING WITH THE  
SOUTH FLORIDA BUILDING CODE  
DATE: July 27, 2000  
B. [Signature]  
PRODUCT CONTROL DIVISION  
BUILDING CODE COMPLIANCE OFFICE  
ACCEPTANCE NO. 97-1228.01

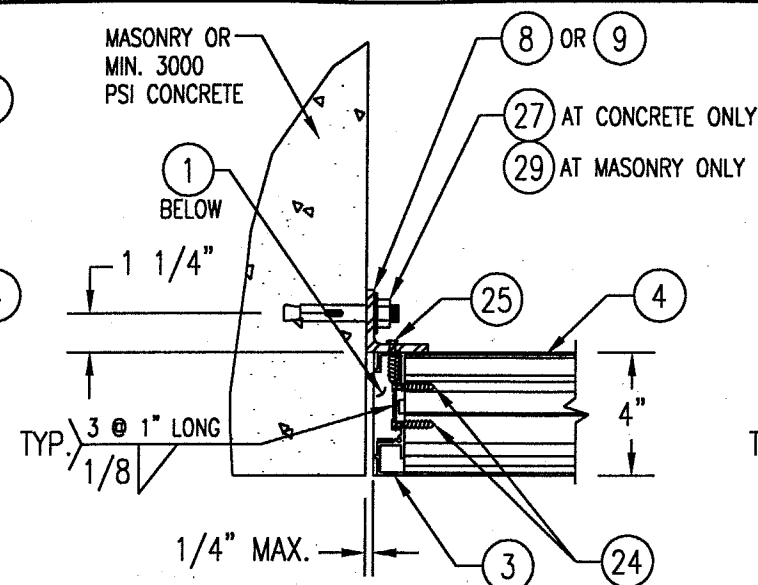
JUN 16 2000  
WARREN W. SCHAEFER, P.E.  
STRUCTURAL ENGINEER  
P.E. No. 44135  
W. W. SCHAEFER ENGINEERING  
& CONSULTING, P.A.  
STRUCTURAL CONSULTING ENGINEERS  
600 SANDTREE DRIVE, SUITE 203B  
PALM BEACH GARDENS, FL 33403  
PHONE: 561-775-4902

REVISION	DATE	DRN	CK	APPD
<b>ARROW UNITED INDUSTRIES</b> A Division of Mestek, Inc. 314 RIVERSIDE DRIVE - P.O. BOX 69 WYALUSING, PA 18853 PHONE 570-746-1888; FAX 570-746-9286				
<b>EA-22 TEST LOUVER</b> <b>ARCHITECTURAL &amp; NON-ARCHITECTURAL LOUVER</b> <b>DETAILS</b>				
CKD.BY	APPD.BY	W.W.S.	SHEET: 4 of 7	
DRN.BY	W.W.S.	DWG. NO.	35972-4	
DATE	06-16-00	REV.		



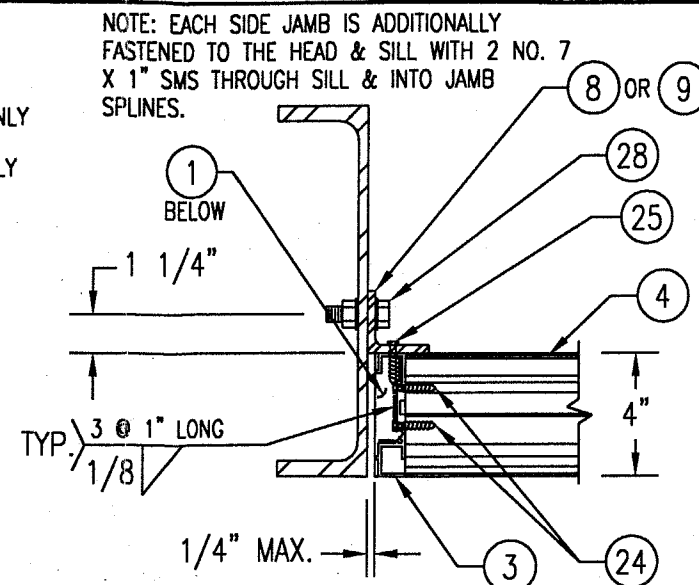


WOOD FRAMED OPENING

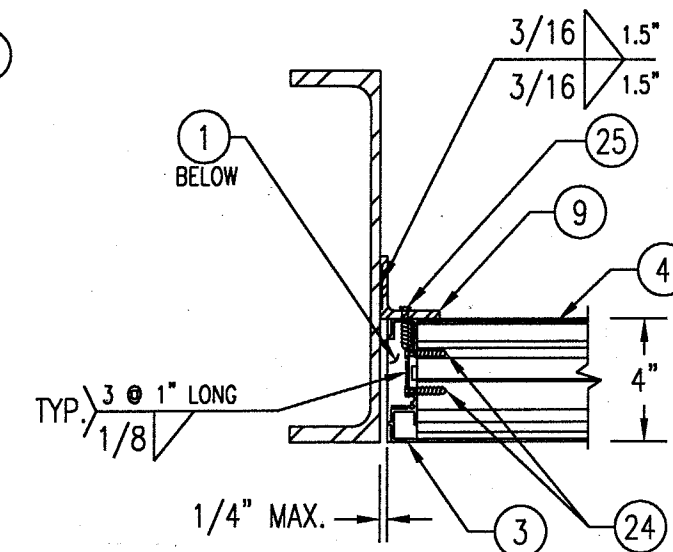


CONCRETE/MASONRY OPENING

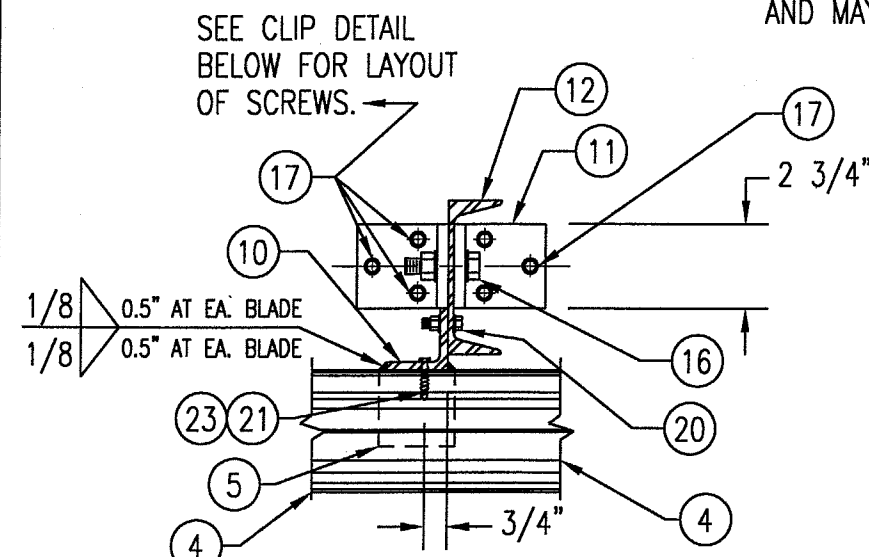
(MASONRY ACCEPTABLE AT SIDES ONLY AND MAY NOT BE USED AT HEAD OR SILL)



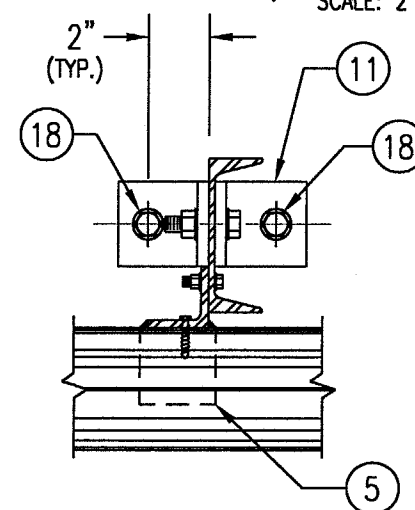
STEEL FRAME OPENING (BOLTED)



STEEL FRAME OPENING (WELDED)

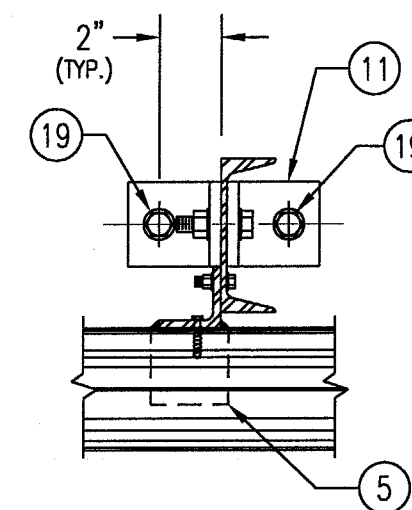


WOOD FRAMED OPENING



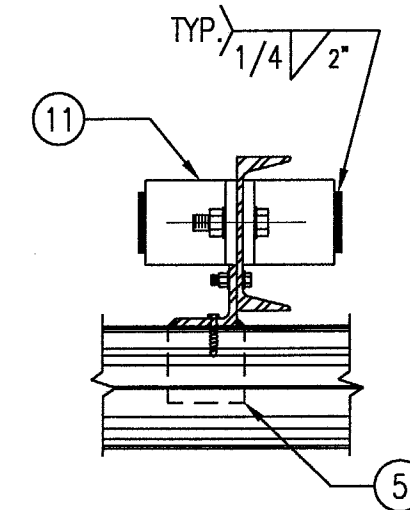
CONCRETE SILL & HEAD

SEE "WOOD OPENING" FOR DETAIL NOT SHOWN (MASONRY ACCEPTABLE AT SIDES ONLY AND MAY NOT BE USED AT HEAD OR SILL)



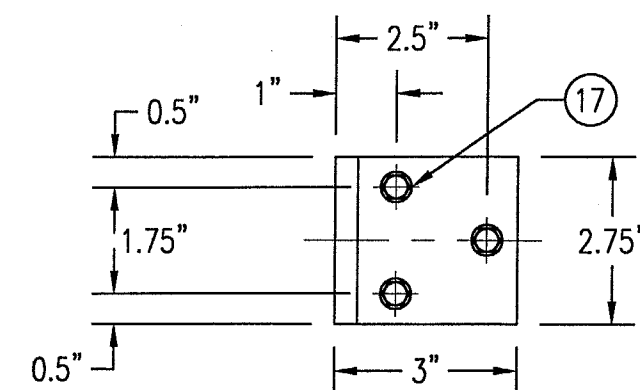
STEEL FRAME OPENING (BOLTED)

SEE "WOOD OPENING" FOR DETAIL NOT SHOWN



STEEL FRAME OPENING (WELDED)

SEE "WOOD OPENING" FOR DETAIL NOT SHOWN



MULLION CLIP DETAIL @ WOOD INSTALLATION

MASONRY MAY ONLY BE USED AT SIDES OF LOUVER PANELS & MAY NOT BE USED AT THE HEAD OR SILL.

DETAIL 7  
SCALE: 2"=1'-0"

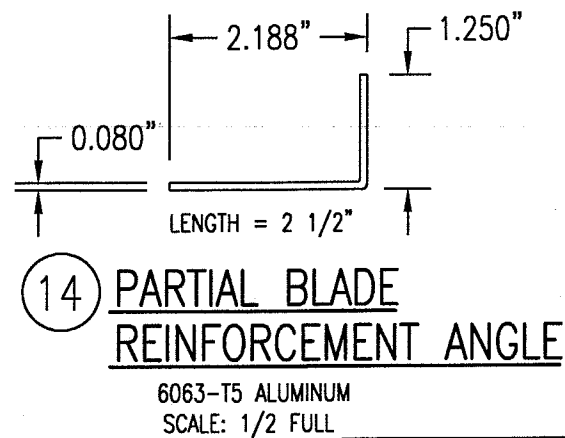
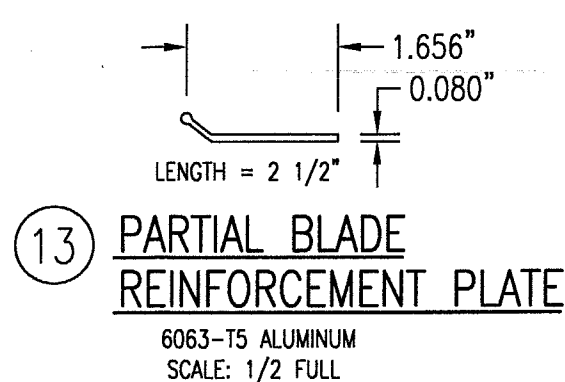
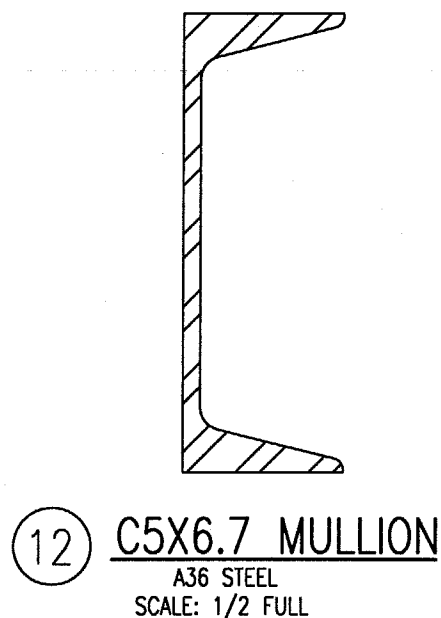
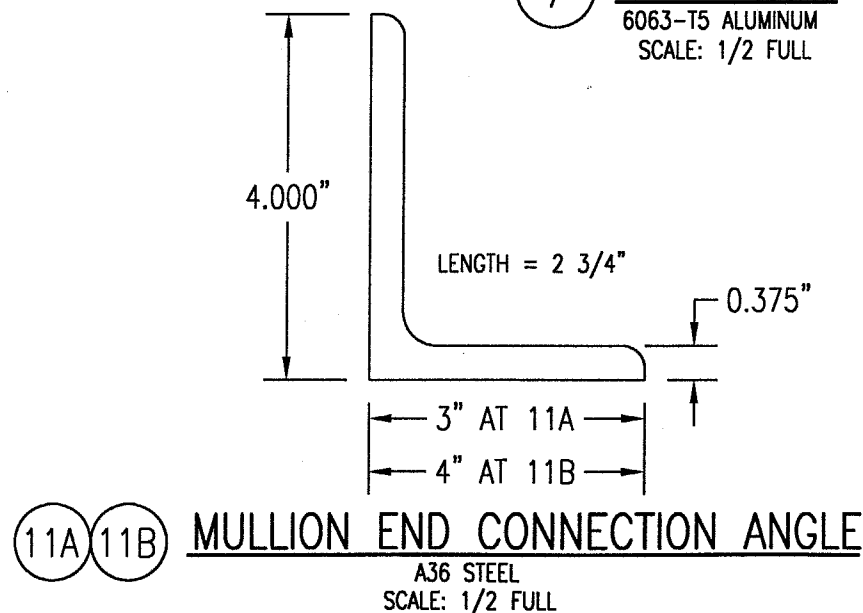
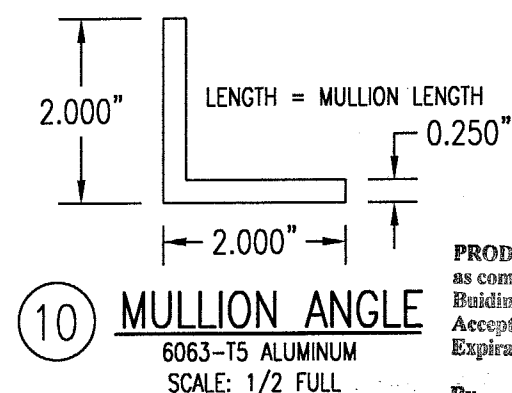
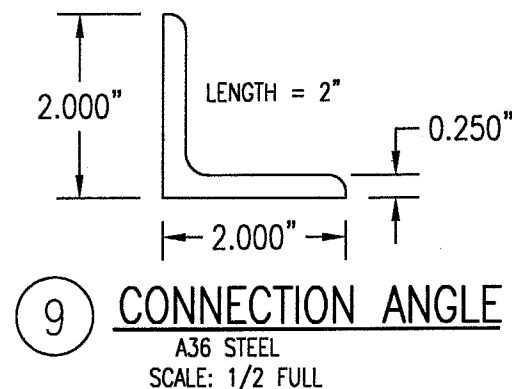
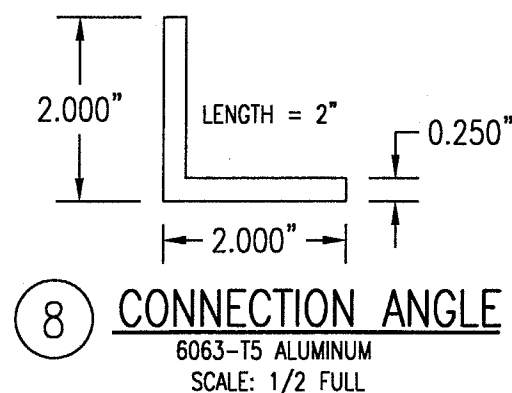
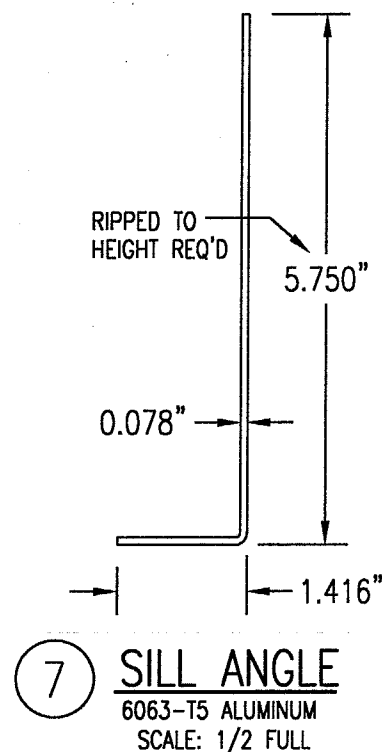
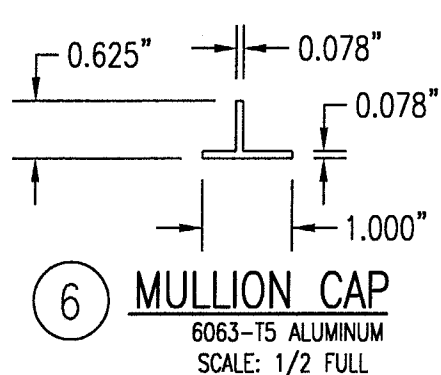
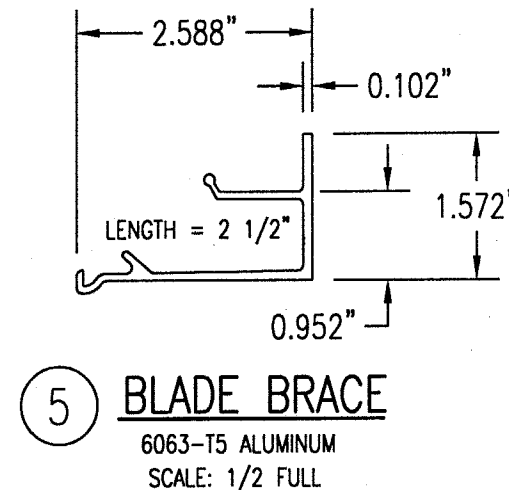
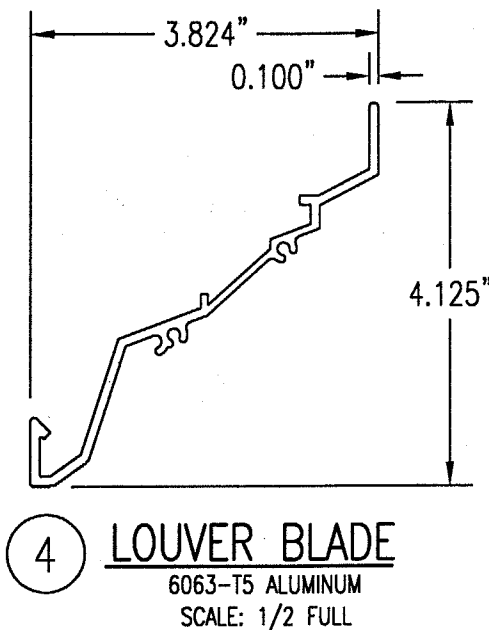
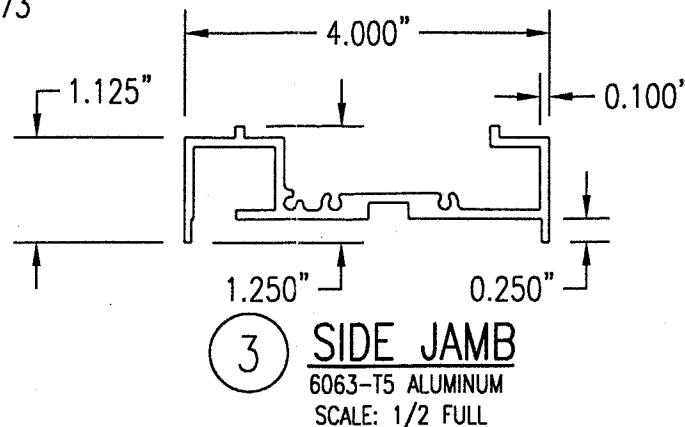
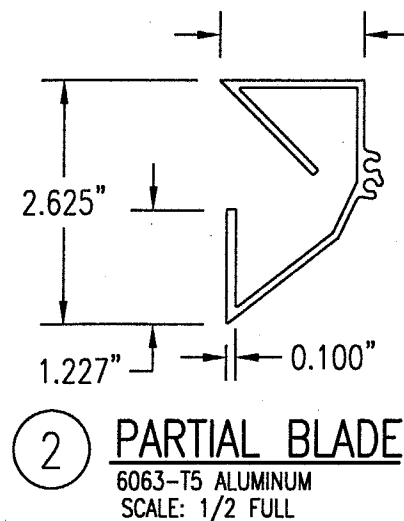
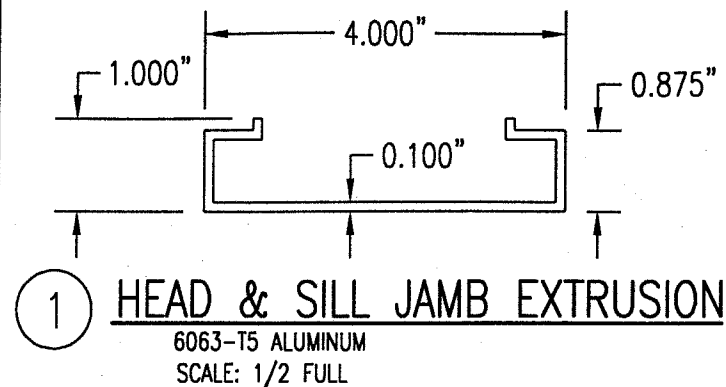
APPROVED AS COMPLYING WITH THE  
SOUTH FLORIDA BUILDING CODE  
DATE July 27, 2000  
BY [Signature]  
PRODUCT CONTROL DIVISION  
BUILDING CODE COMPLIANCE OFFICE  
ACCEPTANCE NO. 99-1228.01

PRODUCT RENEWED  
as complying with the Florida  
Building Code  
Acceptance No. 03-0210.63  
Expiration Date 07/27/2008

By [Signature]  
Miami Dade Product Control  
Division

JUN 16 2000  
WARREN W. SCHAEFER, P.E.  
STRUCTURAL ENGINEER  
P.E. No. 44135  
W. W. SCHAEFER ENGINEERING  
& CONSULTING, P.A.  
STRUCTURAL CONSULTING ENGINEERS  
600 SANDTREE DRIVE, SUITE 203B  
PALM BEACH GARDENS, FL 33403  
PHONE: 561-775-4902

REVISION	DATE	DRN	CK	APPD
<b>ARROW UNITED INDUSTRIES</b> A Division of Mestek, Inc. 314 RIVERSIDE DRIVE - P.O. BOX 69 WYALUSING, PA 18853 PHONE 570-746-1888; FAX 570-746-9286 EA-22 TEST LOUVER ARCHITECTURAL & NON-ARCHITECTURAL LOUVER DETAILS				
CKD.BY	APPD.BY	W.W.S.		
DRN.BY	W.W.S.	DWG. NO.		
DATE	06-16-00	35972-4		
SHEET: 5 of 7				REV.



PRODUCT RENEWED  
as complying with the Florida  
Building Code  
Acceptance No. 03-0210-03  
Expiration Date 07/27/2008

By *[Signature]*  
Miami Dade Product Control  
Division

APPROVED AS COMPLYING WITH THE  
SOUTH FLORIDA BUILDING CODE  
DATE *July 27, 2000*  
BY *[Signature]*  
PRODUCT CONTROL DIVISION  
BUILDING CODE COMPLIANCE OFFICE  
ACCEPTANCE NO. *97-1228-01*

JUN 16 2000  
*[Signature]*  
WARREN W. SCHAEFER, P.E.  
STRUCTURAL ENGINEER  
P.E. No. 44135  
W. W. SCHAEFER ENGINEERING  
& CONSULTING, P.A.  
STRUCTURAL CONSULTING ENGINEERS  
600 SANDTREE DRIVE, SUITE 203B  
PALM BEACH GARDENS, FL 33403  
PHONE: 561-775-4902

REVISION	DATE	DRN	CK	APPD
<b>ARROW UNITED INDUSTRIES</b> A Division of Mestek, Inc. 314 RIVERSIDE DRIVE - P.O. BOX 69 WYALUSING, PA 18853 PHONE 570-746-1888; FAX 570-746-9286				
<b>EA-22 TEST LOUVER</b> ARCHITECTURAL & NON-ARCHITECTURAL LOUVER PARTS & EXTRUSIONS				
CKD.BY	APPD.BY W.W.S.	SHEET: 6 of 7		
DRN.BY W.W.S.	DWG. NO.	35972-4		
DATE 06-16-00		REV.		



ALLOWABLE WIND PRESSURE VS. JAMB CLIP SPACING AND PANEL WIDTH			
PANEL WIDTH (INCHES)	CLIP SPACING (INCHES)	ALLOWABLE PRESSURE WITH MID SPAN MULLION (PSF)	ALLOWABLE PRESSURE WITHOUT MID SPAN MULLION (PSF)
16	8	150	150
	12	150	150
	16	150	140
	20	150	105
	24	150	70
20	8	150	150
	12	150	140
	16	150	112
	20	150	84
	24	150	56
24	8	150	140
	12	150	117
	16	150	93
	20	150	70
	24	125	47
28	8	150	82
	12	150	68
	16	150	54
	20	150	41
	24	107	27
30	8	150	62
	12	150	52
	16	150	41
	20	140	31
	24	93	-
36	8	150	-
	12	150	-
	16	150	-
	20	125	-
	24	83	-
42	8	150	-
	12	150	-
	16	142	-
	20	107	-
	24	71	-
48	8	150	-
	12	150	-
	16	125	-
	20	93	-
	24	62	-
54	8	150	-
	12	138	-
	16	111	-
	20	83	-
	24	55	-
60	8	150	-
	12	125	-
	16	100	-
	20	75	-
	24	50	-

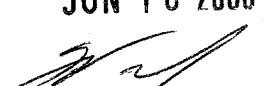
MATERIAL LIST		
NO.	DESCRIPTION	NOTES/SPECIFICATIONS
PARTS/EXTRUSIONS		
1	HEAD & SILL FRAME	6063-T5 ALUMINUM
2	PARTIAL BLADE & HEAD	6063-T5 ALUMINUM
3	SIDE JAMB FRAME	6063-T5 ALUMINUM
4	LOUVER BLADE	6063-T5 ALUMINUM
5	BLADE SUPPORT BRACKET (2 1/2" LONG)	6063-T5 ALUMINUM
6	MULLION CAP	6063-T5 ALUMINUM; FULL LENGTH OF MULLION JAMBS
7	SILL ANGLE	6063-T5 ALUMINUM; FULL WIDTH OF PANEL
8	L2X2X1/4 JAMB CONNECTION ANGLE 2" LONG	6063-T5 ALUMINUM; WITHIN 4" OF JAMB ENDS & SPACED PER LOAD TABLE ON SHT. 2
9	L2X2X1/4 OPTIONAL JAMB CONNECTION ANGLE 2" LONG	A36 STEEL; WITHIN 4" OF JAMB ENDS & SPACED PER LOAD TABLE ON SHT. 2
10	L2X2X1/4 CONTINUOUS MULLION CONNECTION ANGLE	6063-T5 ALUMINUM; FULL LENGTH OF CHANNEL MULLION
11	L4X3X3/8 MULLION END CONNECTION ANGLE 2 3/4" LONG	A36 STEEL; 2 PER MULLION END
12	C5X6.7 MULLION	A36 STEEL; FULL HEIGHT OF PANELS
13	PARTIAL BLADE REINFORCEMENT PLATE (2 1/2" LONG)	6063-T5 ALUMINUM
14	PARTIAL BLADE REINFORCEMENT ANGLE (2 1/2" LONG)	6063-T5 ALUMINUM
15	OPEN	
FASTENERS		
16	1/2" X 2" A307 HEX HEAD PLATED STEEL OR S/STL BOLT	WITH FLAT WASHERS, LOCK WASHER & NUT; 2 PER MULLION END
17	NO. 14 S.S. SMS SCREWS	3 PER MULLION END CLIP WITH MIN. 1 1/2" WOOD EMBED
18	5/8" X 2 1/4" SLEEVE ANCHOR WITH FLAT WASHER	USA KINGPIN ANCHOR; 1 PER CHANNEL END CONNECTION ANGLE INTO CONCRETE ONLY
19	1/2" X 2" A307 HEX HEAD PLATED STEEL OR S/STL BOLT	WITH FLAT WASHERS, LOCK WASHER & NUT; 1 PER CHANNEL END CONNECTION ANGLE INTO STEEL FRAME
20	5/16-18 UNC X 1 1/2" HEX HEAD STEEL OR S/STL BOLT	WITH FLAT WASHER, LOCK WASHER & NUT; WITHIN 4" OF MULLION ENDS & MAX. 8" O.C.
21	NO. 8 X 3/4" SMS SCREW	1 AT EACH LOUVER BLADE SUPPORT BRACKET AT ARCHITECTURAL MAIN MULLIONS & ALL MID-SPAN MULLIONS
22	NO. 14 X 1 1/4" HILTI TEK SCREW	WITHIN 3/4" OF MULLION ENDS & MAX. 4" O.C. INTO FRAME
23	NO. 14 X 1" SMS SCREW	1 AT EACH LOUVER BLADE AT ALL ARCHITECTURAL MAIN MULLIONS & ALL MID-SPAN MULLIONS
24	NO. 7 X 1" SMS SCREW	2 PER EACH LOUVER BLADE END THROUGH JAMB & INTO BLADE SPLINES
25	NO. 14 X 1 1/4" HILTI TEK SCREW	2 PER EACH HEAD, SILL & SIDE JAMB CONNECTION ANGLE
26	1/2" X 2" LAG SCREW WITH FLAT WASHER	1 PER EACH HEAD, SILL & SIDE JAMB CONNECTION ANGLE INTO WOOD FRAME
27	5/8" X 2 1/4" SLEEVE ANCHOR WITH FLAT WASHER	USA KINGPIN ANCHOR; 1 PER EACH HEAD, SILL & SIDE JAMB CONNECTION ANGLE INTO CONCRETE ONLY
28	1/2" X 2" HEX HEAD A307 PLATED STEEL OR S/STL BOLT	WITH FLAT WASHERS, LOCK WASHER & NUT; 1 PER EA. JAMB CONNECTION ANGLE INTO STEEL FRAME
29	3/8" X 1 7/8" SLEEVE ANCHOR WITH FLAT WASHER	RED HEAD DYNABOLT WITH MIN 1 1/2" BLOCK/CONCRETE EMBED (1 PER FRAME SUPPORT CLIP)
30	NO. 8 X 1/2" SMS SCREW	WITHIN 2" OF MULLION ENDS & MAX. 12" O.C. (MULLION CAP TO MULLION)
31	NO. 7 X 1" SMS SCREWS	2 PER FRAME CORNER THROUGH SILL/HEAD FRAME & INTO JAMB SPLINES

APPROVED AS COMPLYING WITH THE  
SOUTH FLORIDA BUILDING CODE  
DATE July 27, 2000  
BY [Signature]  
PRODUCT CONTROL DIVISION  
BUILDING CODE COMPLIANCE OFFICE  
ACCEPTANCE NO. 99-1228.01


PRODUCT RENEWED  
as complying with the Florida  
Building Code  
Acceptance No. 03-0210.03  
Expiration Date 07/27/2008  
By [Signature]  
Miami Dade Product Control  
Division

# PRESSURE TABLE NOTES:

1. WHEN THE PANEL WIDTH IS 30" OR LESS, NO MID SPAN MULLION IS REQUIRED PROVIDING COMPLIANCE WITH THE TABLE.
2. ALL PRESSURES IN THIS TABLE ARE FOR BOTH POSITIVE & NEGATIVE WIND PRESSURE.

JUN 16 2000  
  
WARREN W. SCHAEFER, P.E.  
STRUCTURAL ENGINEER  
P.E. No. 44135

W. W. SCHAEFER ENGINEERING & CONSULTING, P.A.  
STRUCTURAL CONSULTING ENGINEERS  
600 SANDTREE DRIVE, SUITE 203B  
PALM BEACH GARDENS, FL 33403  
PHONE: 561-775-4902

REVISION		DATE	DRN	CK	APPD
 <b>ARROW UNITED INDUSTRIES</b> A Division of Mestek, Inc. 314 RIVERSIDE DRIVE - P.O. BOX 69 WYALUSING, PA 18853 PHONE 570-746-1888; FAX 570-746-9286					
EA-22 TEST LOUVER ARCHITECTURAL & NON-ARCHITECTURAL LOUVER MATERIAL LIST & LOAD TABLE					
CKD.BY	APPD.BY	W.W.S.	SHEET: 7 of 7		REV.
DRN.BY	W.W.S.	DWG. NO.	35972-4		
DATE	06-16-00				