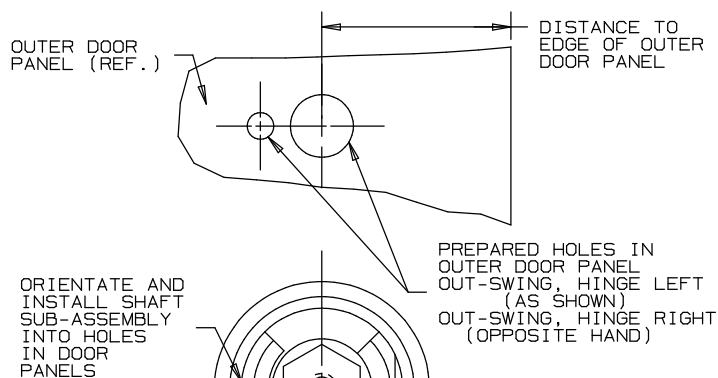


# AUSTIN-ROMTECH NON-LOCKING AND LOCKING OUT-SWING DOOR LATCH INSTALLATION

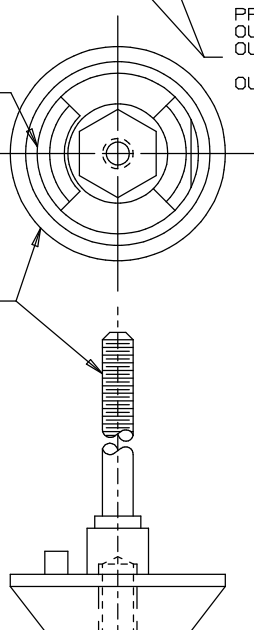
1" - 1 1/2" - 2" - 4" THICK DOORS



ORIENTATE AND  
INSTALL SHAFT  
SUB-ASSEMBLY  
INTO HOLES  
IN DOOR  
PANELS

PREPARED HOLES IN  
OUTER DOOR PANEL  
OUT-SWING, HINGE LEFT  
(AS SHOWN)  
OUT-SWING, HINGE RIGHT  
(OPPOSITE HAND)

5/16" SHAFT  
SUB-ASSEMBLY



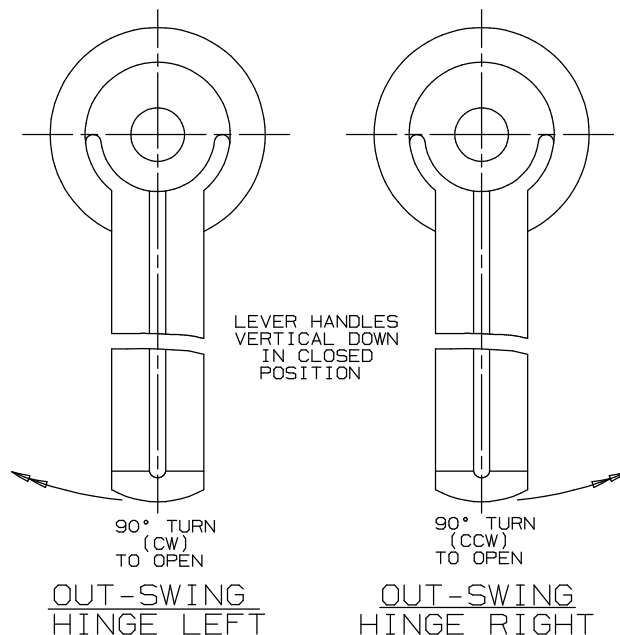
OUT-SWING, HINGE LEFT (SHOWN)  
OUT-SWING, HINGE RIGHT (OPPOSITE HAND)

SNAP OUTER  
LEVER HANDLE  
INTO 5/16"  
SHAFT  
SUB-ASSEMBLY,  
INSERT AND  
TIGHTEN  
SLOTTED HEAD  
MACHINE SCREW,  
PRESS IN  
SCREW COVER

OUTER  
LEVER  
HANDLE

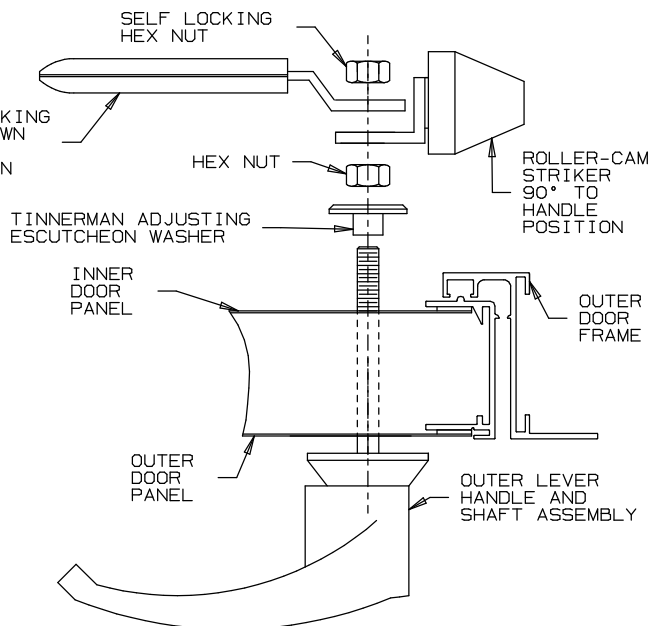
SLOTTED HEAD  
MACHINE  
SCREW

SCREW  
COVER



OUT-SWING  
HINGE LEFT

OUT-SWING  
HINGE RIGHT



**NOTE:**

1. INSERT SHAFT ASSEMBLY AND LEVER HANDLE AS DESCRIBED ABOVE.
2. SLIDE ON TINNERMAN WASHER UP AGAINST INNER DOOR PANEL WHILE PRESSING LEVER HANDLE AGAINST OUTER DOOR PANEL.
3. INSTALL HEX NUT, ROLLER CAM, INSIDE HANDLE, AND SELF-LOCKING HEX NUT ON SHAFT. ADJUST TO COMPRESS DOOR GASKET AND/OR DESIRED CLOSED POSITION. ADJUST AS NECESSARY.



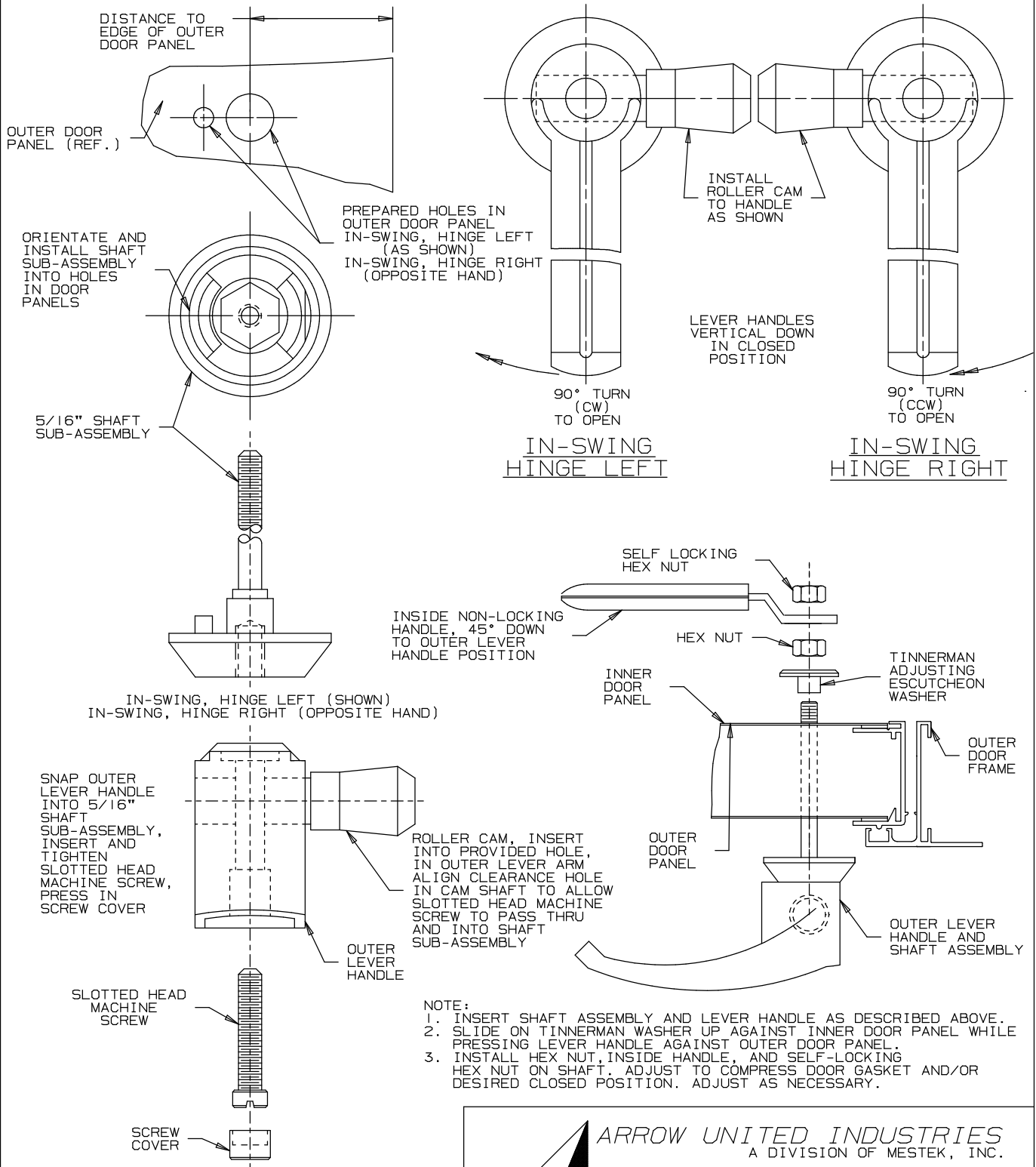
ARROW UNITED INDUSTRIES  
A DIVISION OF MESTEK, INC.

314 RIVERSIDE DRIVE  
WYALUSING, PA 18853

TEL: (570) 746-1888 FAX: (570) 746-9286

# AUSTIN-ROMTECH NON-LOCKING AND LOCKING IN-SWING DOOR LATCH INSTALLATION

1" - 1 1/2" - 2" - 4" THICK DOORS



ARROW UNITED INDUSTRIES  
A DIVISION OF MESTEK, INC.

314 RIVERSIDE DRIVE  
WYALUSING, PA 18853

TEL: (570) 746-1888 FAX: (570) 746-9286