

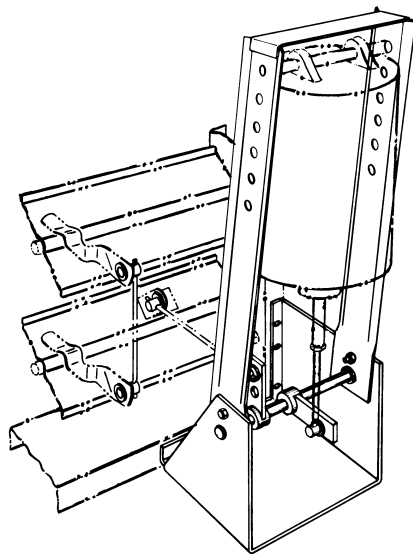
NEW ARROW INTERNAL MOUNT SAVES ENERGY and LABOR COSTS "UNI-MOUNT" REDUCES FIELD LABOR TIME

- Increases efficiency of actuator operation by transmitting the full operative force to the damper with no lost motion. Eliminates "fish-tailing" and the binding of linkage which frequently results.

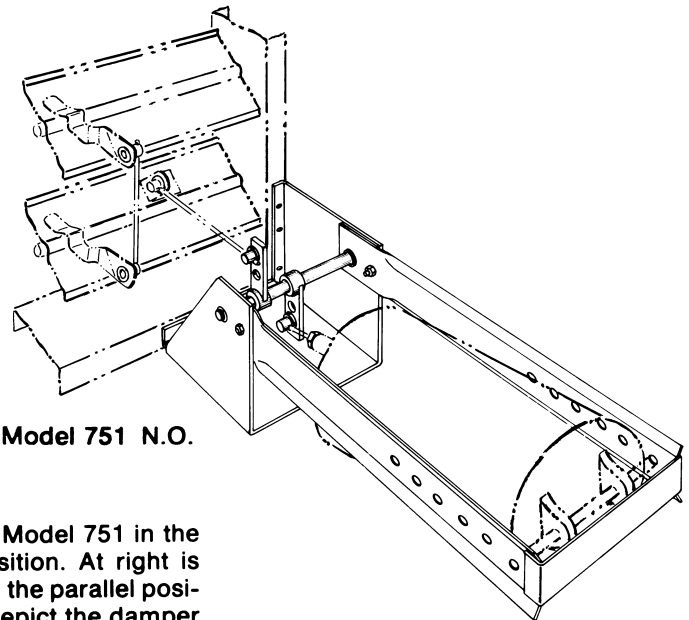
- The location of pneumatic actuators can easily be changed, in the field, to a position either parallel with, or perpendicular to, the airstream.

- Increased efficiency of UNI-MOUNT may reduce the number of actuators required for some installations.

- Prevents errors because it is not necessary to know in advance whether damper is N.O. or N.C.



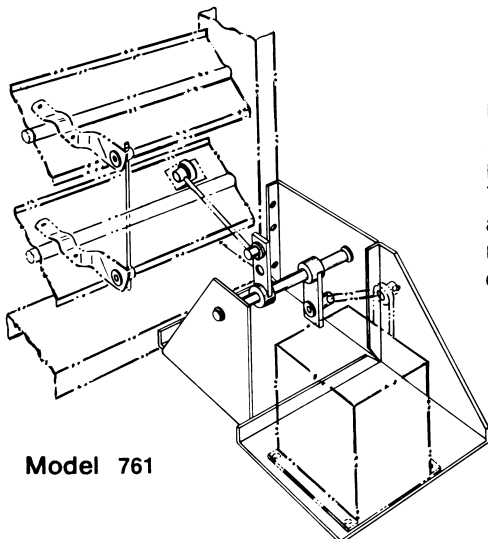
Model 751 N.O.



Model 751 N.O.

- Shown at left is Model 751 in the perpendicular position. At right is the same model in the parallel position. Both views depict the damper in a normally open (N.O.) mode. The damper (in either view) could be changed to normally closed (N.C.) simply by shifting the position of the crank arm which is attached to the actuator, so that the "stroke" causes the shaft (as viewed) to rotate CCW.

UNI-MOUNTS FOR ELECTRIC MOTORS driving 1, 2 or 3 damper panels are also available. Model 761 is shown at left. These models are also easily arranged for either normally open or normally closed drives.



Model 761

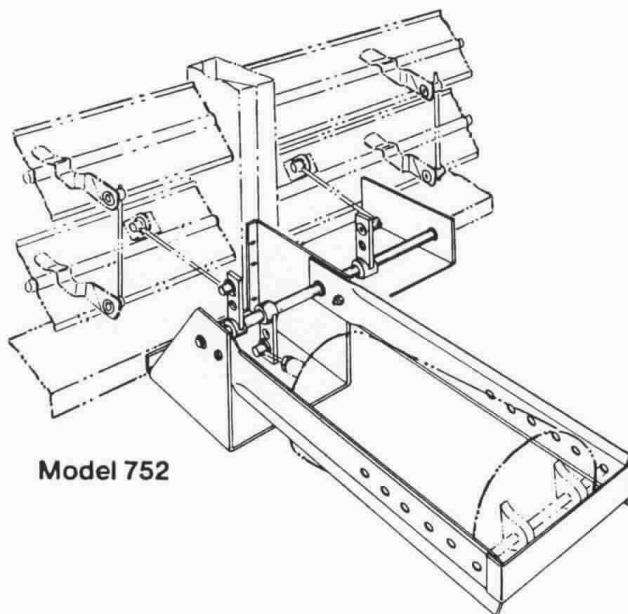
- Simplifies ordering procedures (prevents possible errors). It is not necessary to know in advance whether damper is to be N.O. or N.C.

- Increases operator efficiency.

- Easily installed on damper frame after damper is in duct.

- Jackshifting can be attached directly to UNI-MOUNT transmitting operator's torque more efficiently to adjacent damper panels - rather than through damper blades.

UNI-MOUNT – The Versatile Internal Motor Mount



Model 752

• Two panel and three panel drive systems with one actuator provide substantially improved reliability. A ½" dia. drive shaft extension is used within the UNI-MOUNT. At left, Model 752 is used to drive 2 panels; at right,

• UNI-MOUNTS, when ordered with Arrow dampers, are easily installed on dampers **after** damper is in duct. UNI-MOUNT accepts the pneumatic actuators of all major companies (3", 4" and 6" sizes), with or without pilot positioning relays installed.

UNI-MOUNTS are removed from dampers for shipment, packed with instructions and hardware for field installation.

When placing orders for UNI-MOUNT, specify actuator, manufacturer and model number.

Maximum Recommended Applications

Based on a parallel damper in a system with 2" s.p. and 1500 fpm (maximum).

Indicated below are suggested limitations of damper square feet to be driven using multi-panel models.

Panels Driven	1770	Pin-Lock	Arrow-Foil
2	40	32	40

FOR PNEUMATIC

Model #751 1 operator driving 1 panel
Model #752 1 operator driving 2 panels

FOR ELECTRIC

Model #761
Model #762



ARROW UNITED INDUSTRIES

A Division of Mestek, Inc.

314 RIVERSIDE DRIVE / WYALUSING, PA 18853

TEL: (570) 746-1888 FAX: (570) 746-9286

AGENT _____