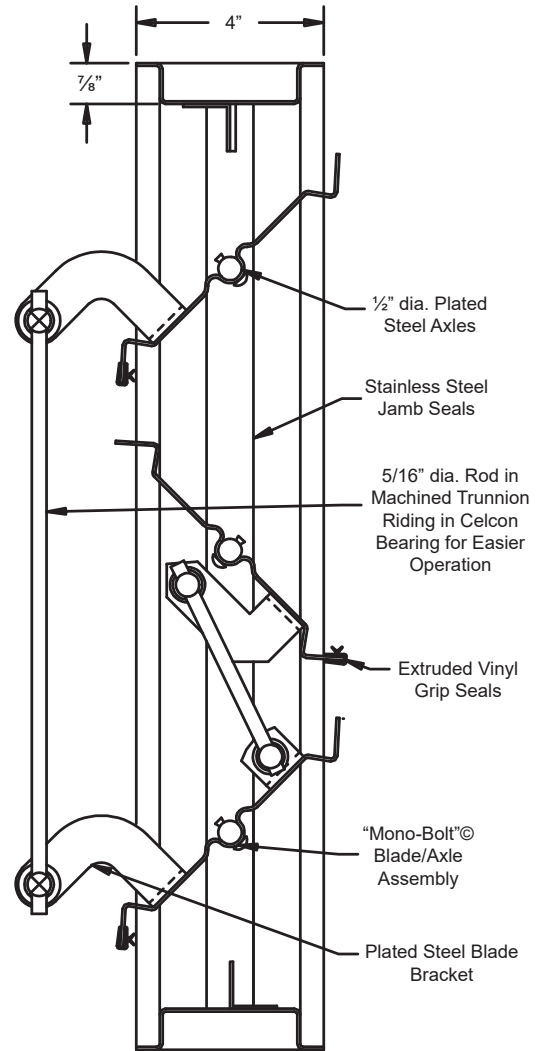


STANDARD MATERIALS AND CONSTRUCTION

- FRAME:** 16-GA galvanized steel, hat-shaped channel, 4" deep.
- BLADE:** 16-GA galvanized steel, on 6" centers.
- LINKAGE:** Pivots are 1/2" dia. plated steel. A 1/4-20 set screw with locking patch locks the pivots to a .31" dia. aluminum rod. Pivots rotate in a celcon bearing. Blade brackets are 12-GA plated steel. Blade linkages are individually factory adjusted for maximum shut-off.
- BEARINGS:** Sintered bronze, oil impregnated.
- AXLES:** Plated steel, 1/2" dia.
- DRIVESHAFT:** 1/2" dia. plated steel, extendable 6".
- SEALS:** Vinyl grip on blades, stainless steel on jamb.
- FINISH:** Mill.



OPTIONS

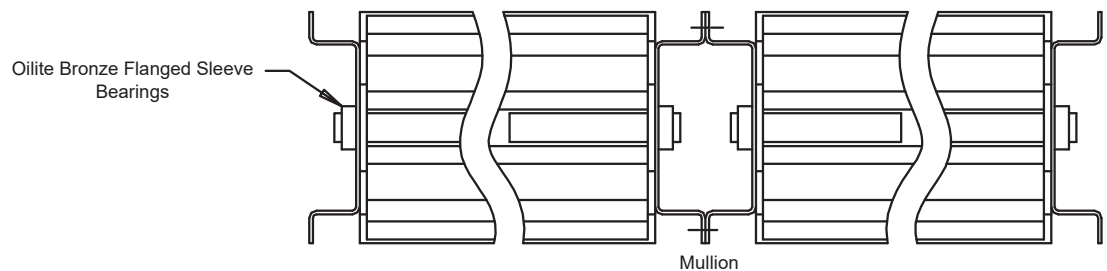
- 1 & 7/16" Flange Frame
- Neoprene Blade Seals Only
- 13 GA Galvanized Steel Frame
- Additional Drive Shafts
- S.S. Drive Shafts Factory Joined Sections
- Face & Bypass Dampers
- In-jamb Linkage
- Finishes - Baked Enamel, Kynar, or Anodize

NOTES

1. 1/4" nominal deduction will be made to the opening size given.
2. Dampers less than 11" high will be a single blade.
3. Dampers between the height of 11" and 14 3/4" will have two blades, opposed action only. Dampers less than 8 3/4" in height will be provided with a 5/8" x 2" x 5/8" extruded aluminum frame.
4. Damper is rated for systems up to 2,000 fpm or up to 4 in. w.g. If being used for applications beyond this, please advise when ordering.
5. Shipping weight approximately 6.5 lbs. per sq.ft.

DAMPER SIZES

Min Panel	Max Single Panel
6"W x 8 3/4"H	48"W x 72"H



Item #	Qty	Width	Height	Parallel Blades	Opposed Blades	Seals	Actuator Model	Interior	Exterior	N.C.	N.O.	Union Made
								Act. Location		Function		
Arch. / Eng.:						EDR:		ECN:		Job:		
Contractor:												
Project:						Date:		DWN:		DWG:		



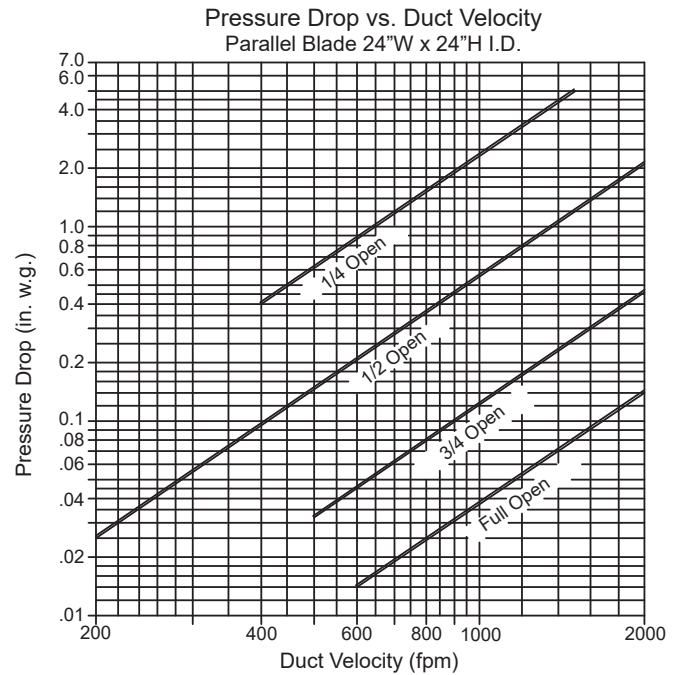
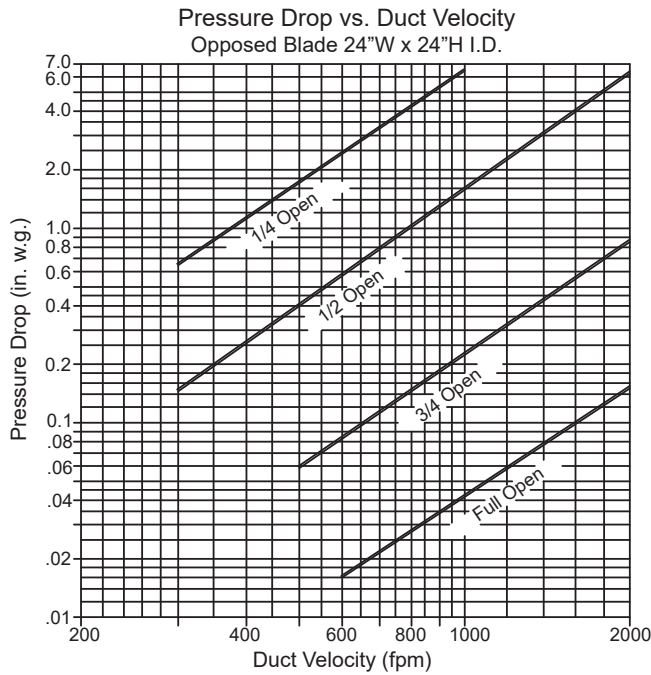
Dampers ▲ Louvers
 UL Life Safety Products
 Division of Mestek
 Member of AMCA

airbalance.com

In the interest of product development, Air Balance reserves the right to make changes without notice.
 450 Riverside Dr • Wyalusing PA, 18853 • Phone 570-746-1888 • Fax 570-746-9286

PRESSURE DROP

Pressure Drop Ratings are based on AMCA Standard 500 using test set-up Fig. 5.3 for damper installed with duct upstream and downstream. Static pressures are corrected to .075 lb/cu.ft. air density.



AIR LEAKAGE

Leakage Ratings are based on AMCA Standard 500 using test set-up Fig. 5.4. Data is based on a closing torque of 5 in-lbs/sq.ft. with a minimum of 25 in-lbs of closing torque applied to damper operating shaft, regardless of damper size.

Total CFM Air Linkage at 1 in. w.g. Differential Through Closed Damper.

		Width			
		12"	24"	36"	48"
Height	12"	3	6	9	12
	18"	5	9	14	18
	24"	6	12	18	24
	30"	8	15	23	30
	36"	9	18	27	36
	42"	11	21	32	42
	48"	12	24	36	48
	54"	14	27	41	54
	60"	15	30	45	60
	66"	17	33	50	66
72"	18	36	54	72	

Air leakage quantities shown above are corrected to standard air density. Air leakage is based on operation between 50°F -104°F.

Air Leakage Correction Factors

Blade Length Limit	Pressure (in. w.g.)	Conversion Factor
48" or less	2	1.27
	3	1.60
	4	1.90

Use of correction factors will give leakage values at greater than 1" pressures.