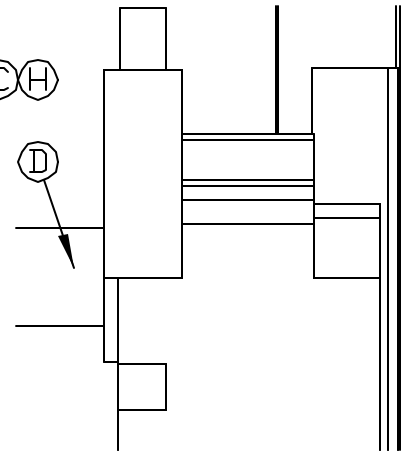


DIMENSION FROM EDGE OF SILL TO EDGE OF ACTUATOR SETUP IS 7.875.

* ALL LOUVER PANELS SHOWN ARE SINGLE LINKAGE. IF DOUBLE LINKAGE PER LOUVER PANEL IS REQUIRED, ADDITIONAL QUANTITIES OF AFFECTED ITEMS WILL BE PROVIDED FOR EACH SET OF LINKAGE.

ITEM	PART DESCRIPTION	DRAWING NUMBER	QUANTITY PER # OF PANELS			TOTAL QUANTITY
			SINGLE	DOUBLE	TRIPLE	
A	JACKSHAFT STAND W/ BEARING	28783-STD	1	2	3	
B	REMOVABLE LINKAGE ARM TYPE 'S'	18142-STD	1	2	3	
C	LINE-CLAMP NO. UMSQ16-131	25724-STD	1	1	1	
D	1" DIA. JACKSHAFT TUBE	25722-STD	1	1	1	
E	#10-24 x 3/4" LG. HEX HEAD	-	2	2	2	
F	5/16" DIA. SWIVEL	A21749	2	4	6	
G	5/16" DIA. PLATED STEEL CONNECTING ROD	-	1	2	3	
H	PLATED STEEL MOUNTING SCREWS (#14 x 3/4" LG.)	-	4	6	8	
I	HONEYWELL ACTUATOR MOUNT	31034-STD	1	1	1	



DETAIL 1
SIEMENS ACTUATOR

REVISION	DATE	BY	APPD.
abi air balance, inc. A MESTEK COMPANY 7301 INTERNATIONAL DRIVE HOLLAND, OHIO Phone (419) 885-5000 Fax (419) 885-1375 MULTI-WIDE PANEL W/ ON BLADE LINKAGE			
CREATED BY	APPD. BY		
DESIGNED BY	CHKD. NO.		
DATE	06/03/01	32986-STD	REV.

ST32986