

MODEL A665CM

Extruded Aluminum Louver • 6" Deep • Drainable • Combination Adjustable and Stationary Blades • Concealed Actuator

STANDARD MATERIALS AND CONSTRUCTION

FRAME: .080" thick nominal; 6063-T6/T52 extruded aluminum alloy

BLADES: Stationary blade .080" thick nominal ; 6063-T6/T52 extruded aluminum alloy.
Adjustable blade .125" thick nominal; 6063-T6/T52 extruded aluminum alloy.

FACE OF LOUVER: Full width sill with drain head with blades contained within the jambs.

LINKAGE: Extruded aluminum, concealed in channel out of airstream. Pivots are .50 dia. machined steel. Cadmium plated and chromate treated. Pivots rotate in a celcon bearing. A .312" dia. Aluminum linkage rod is locked to the pivot by a 1/4 - 20 set screw with epoxy locking patch.

SHAFT: .50 DIA. ALUMINUM "Pin-Lock" Rod.

BLADE SEALS: Extruded silicone rubber seal at blade edge.

JAMB SEALS: Stainless steel jamb seals.

SCREEN: 1/2" x .051" flattened aluminum bird screen

FINISH: Mill

Actuator: 120 VAC. Spring return normally closed
133 in. lbs. torque

OPTIONS

Finish - Baked Powder Polyester , Kynar, or Anodize

Variety of Bird and Insect Screen

1 7/8" Usable Flange Frame (Either Face)

Blank-off Panels

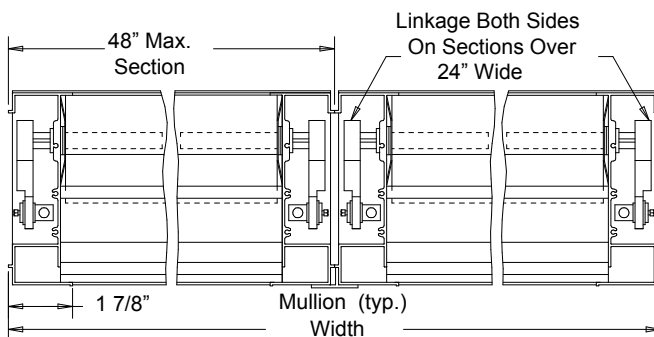
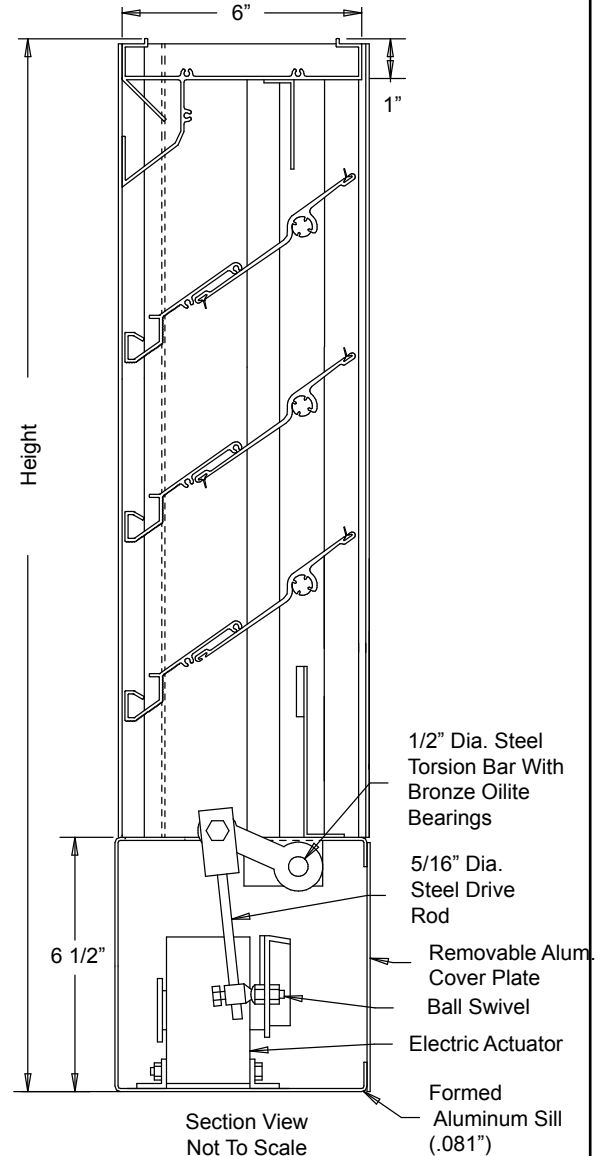
Actuators (Electric)

NOTES

- "A" width and "B" height are opening dimensions. Louvers are provided approximately 1/2" undercut.
- Shipping weight approximately 5.7 lbs./sq.ft.

LOUVER SIZES

Panels	Min Panel	Max Single Panel
A665CM	12"W x 19"H	48"W x 96"H



MODEL A665CM

Extruded Aluminum Louver • 6" Deep • Drainable • Combination Adjustable and Stationary Blades • Concealed Actuator

This Page Intentionally Left Blank